

Dredger **DREWP10** for water plant



Main features:

- High navigating speed.
- Wider collecting range.
- Safe and flexible for many working situation.
- Easy operation, convenient automation, high efficiency.
- Multi-function for collecting many different kind of material, such as white pollutant, plastic bag, empty bottles, leaves, water plants.

It is with strong power and smooth transmitting. It is with hydraulic automation for cutting, collecting, loading, storing, transmitting, unloading.

It can swing 360° in the same place, so that it can navigate and turn at narrow river.

As it is with full load, it can unload to about 3.5 meter higher above the water level to the river bank or the truck at river bank.

It is with rust-proof painting.

Technical parameters

Ship body dimension (L*W*H): 9.5 * 3.2 * 0.9m

Total Ship dimension with collector and conveyor (L*W*H): 16 * 4.2 * 2.8m

Draught as no load: 0.35m

Draught as full load: 0.5m

Harvesting width: <4.2m

Harvesting depth: <1.7m

Loading weight: 10 ton

Navigating speed as no load: 10km/h

Navigating speed as full load: 7km/h

Harvesting speed: 3.5km/h (higher speed may not harvesting in good condition.)

Engine: China made WEICHAI HUAYUAN 6105 diesel engine 120KW

Endurance time: 12h

Front conveyor length: 5.5m

Front conveyor width: 1.36m

Rear conveyor length: 4.3m

Rear conveyor width: 1.36m

Conveyor material: stainless steel

Cab area: 2.6m²

Drive: 2 wheel drive. (Wheel diameter 1.4m)

Working speed: 6000m²/h

Watertight compartment: 3

Each compartment with watertight hole for people may go inside for checking.

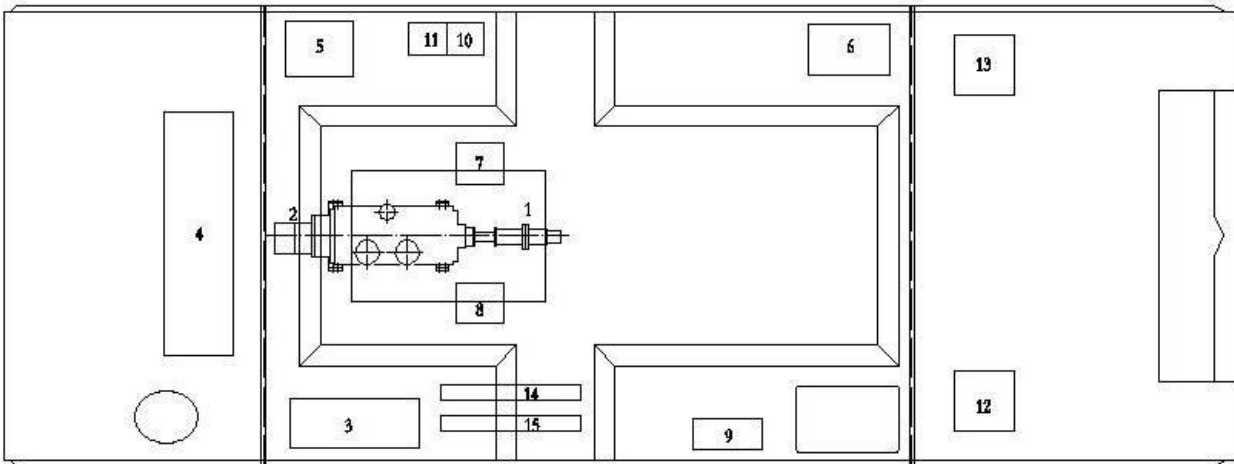


Collecting part



Collecting wheel

Machinery space:



1	Hydraulic oil pump	9	Hydraulic gear distributor
2	Duplex high pressure oil pump	10	battery
3	Hydraulic oil tank	11	Generator electricity box
4	Fuel tank	12	Hydraulic assembly
5	Hydraulic combined valve block	13	Central controlling electricity box
6	Electricity box	14, 15	Hydraulic oil radiator
7, 8	High pressure water pump		

It is with a sucking pump, which can sucking the water in the dredger and let water go out of the dredger.

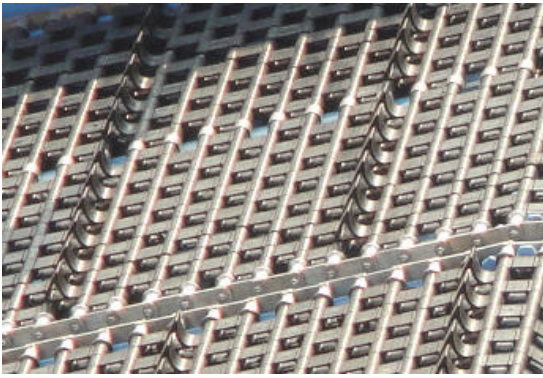
It is with separator for distinguish the water and grease dirt. The grease dirt will go into grease dirt tank, and the water will go out of the dredger. This is environmental.



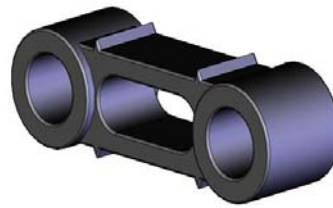
Cutting wheel



Cutting wheel driving motor



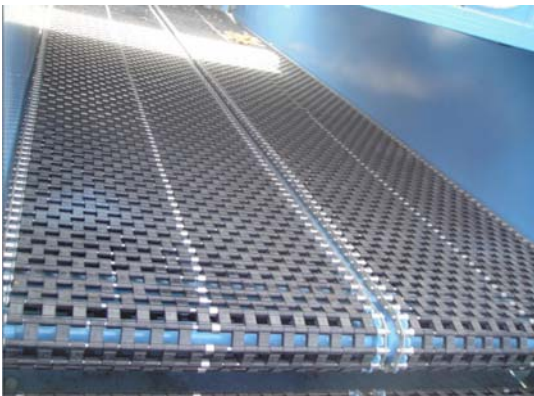
Front conveyor



Conveyor part



Conveyor part with hook



Conveyor in the middle



connection for conveyor in front and middle



Rear conveyor



driving axle for rear conveyor



Driving wheel



lamp for night working