

WUHAN MACHINE EQUIPMENT CO., LTD
 2F, BLOCK#7, SBI STREET, GUANG GU, WUHAN, CHINA
 WEB: www.wme.cn EMAIL: info@wme.cn FAX: +86-21-23 010 666

Steel Grap 400G



Main Spec

machine model	400G
machine weight	40 t

Engin

model	Cummins C8.3-C
rated power	194kw/2100rpm
bore	102mm
stroke	120mm
displacement	8.3L
feature	water-cooled, 6-cylinder

Drive

drive method	hydraulic drive
Max.Travel Speed	4km/h
gradeability	70% (35°)

Hydraulic System

main pump	2 variable-displacement axial piston pumps
Main Implement System - Maximum Flow (2x)	2x235L/min
digging circuits	30MPa
travel circuits	34MPa
swing circuits	24MPa
	cylinder qty x bore x stroke
Boom cylinder (2x)	2 x Φ140 x 1090mm
Arm cylinder (1x)	1 x Φ140 x 1620mm
grab cylinder (5x)	5 x Φ70 x 295mm

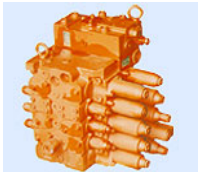
Cummins engin



main pump



main valve



swing system TOSHIBA



Service Refill Capacities

Fuel tank	312L
Engine lubricant	11L
Swing Drive	9L
Final Drive	2x5.4L
Hydraulic tank	350L
cooling fluid	64L

Swing Mechanism

Swing speed	10rpm
-------------	-------

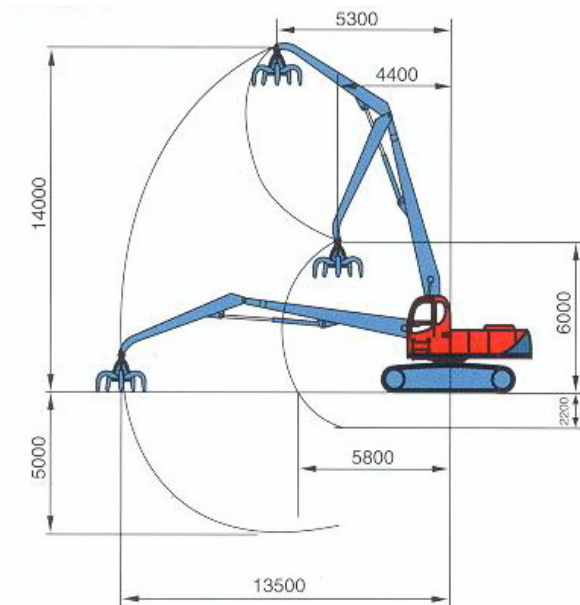
Working System

2-part boom

grab capacity at the farthest position

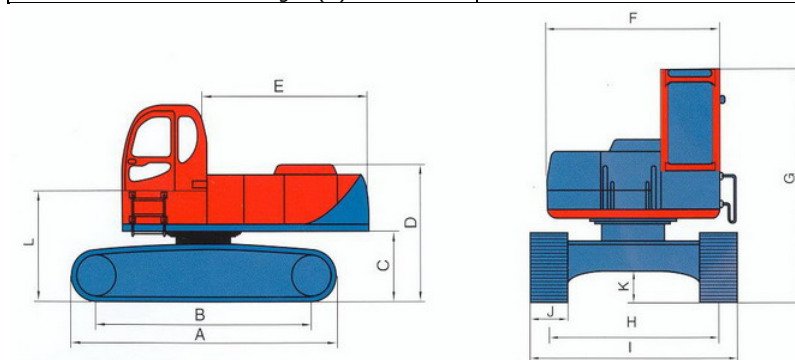
grab without shields	1200KGS
grab with shields	900KGS

Max.hoisting weight	6500KGS
---------------------	---------



Dimension

transportation width (I)	3350mm
ground clearance (K)	510mm
Track gauge (H)	2750mm
width of track (J)	600mm
pedrail length (A)	5036mm
wheelbase (B)	4086mm
cabinet height (G)	3148mm
Engine hood width (F)	2800mm
Engine hood height (D)	2493mm
rear swing radius (E)	3148mm
clearance under counterweight (C)	1285mm



cabinet



Cabinet Features

- *shock-proof
- *camber design for big space inside, and big window for wide vision
- *convenient design for driver to operate
- *all monitor instruments are within eyesight
- *luxury, comfortable, and safe
- *with air conditioner for cool or warm

monitor instrument



Monitor Instrument Features

- *monitor engine work time, pressure, temperature, fuel volume, ...
- *autoalarm if any problem, and show what is the problem

Standard Equipment Including Following

- *lifting cab
- *2-part working boom
- *air conditioner
- *mechatronic control system
- *600 crawler shoes of triple-tooth
- *5-pawl grab (shields detachable)
- *central lubricate system

other optional parts

- *bulk grab



- *wood grab



- *triple-part working boom



- *electrical chunk system



Features

- *400G crawler hydraulic steel-grabbing machines are developed to meet the actual needs of steel companies, with main pump, main valve and servo valve of the engine imported from abroad.

- *The machine features high manoeuvrability and efficiency.

NOTICE: Specifications are subject to change without notice, due to our endless improvements and innovations.