

# LT1020 汽车起重机主要特点

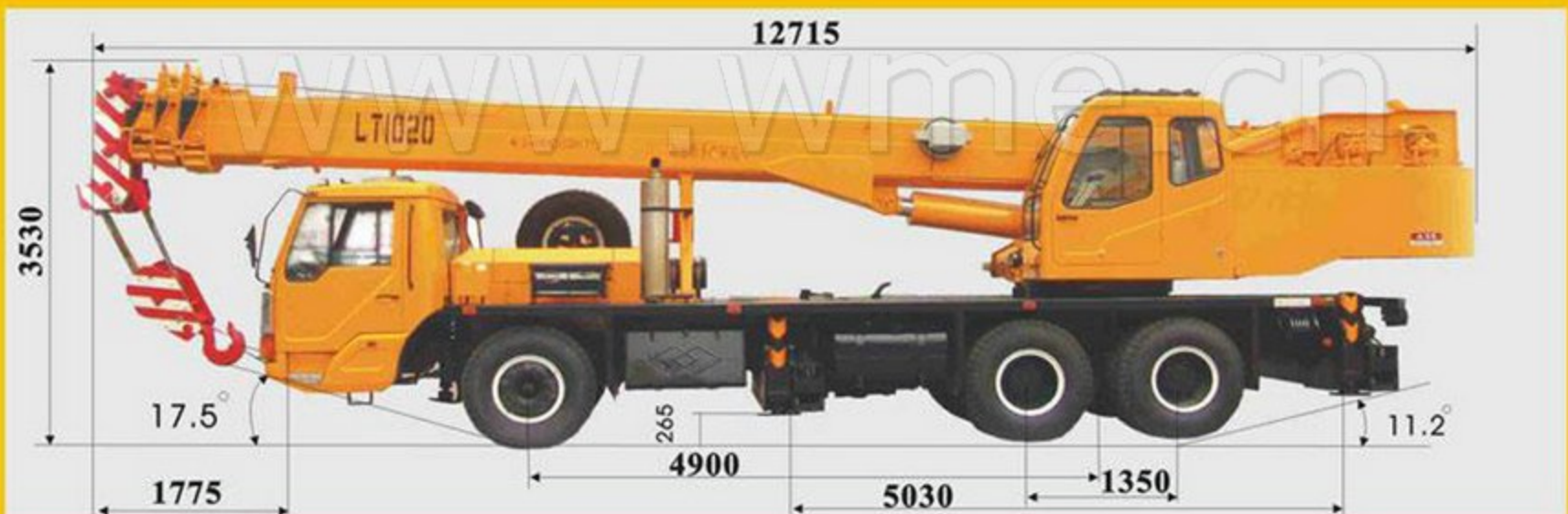
## LT1020 Main Performance Advantages

LT1020汽车起重机是在消化移植国外先进技术的基础上，结合我公司创新技术而开发研制的，其专用底盘、六边形起重臂、四节臂同步伸缩系统、液压系统采用新型防漏管接头及胶管，电气系统和安全装置充分体现了设计的先进性、可靠性、经济性和高效性，上下车配有空调系统，提高了产品使用的舒适性，是国内同类产品中的佼佼者。

上下车液压系统，采用新型防漏接头和管路。

Truck crane LT1020 is equipped with special chassis, 4-section synch-telescopic boom with hexagonal profile, hydraulic system with latest leak-proof joints and pipe lines. The electronic system and safety device reflect its advantage, reliability, fine economy and high efficiency in design. The air conditioners for both supperstructure and chassis make the operator more comfortable when crane operating.

### 外型尺寸 Contour Dimension Figure

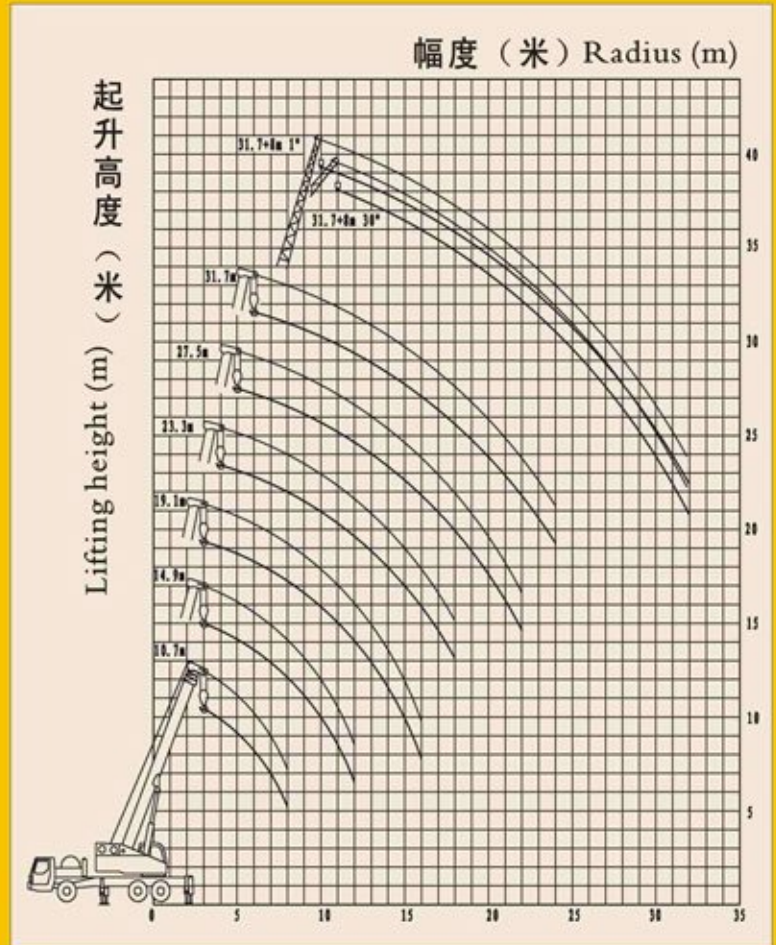


### 说明 Note:

- 1 表中给定数值是在地面坚实，整机调平状态下，起重机的额定起重量。表中工作幅度是指吊载后的实际幅度。
- 2 表中粗线以上数值为起重臂强度决定，粗线以下数值为整机稳定性决定。臂长10.7m吊载时，各节臂应处于完全缩回状态。
- 3 表中额定起重量包括吊钩及吊具重量，主钩重300kg，副钩重100kg，若副臂处于展开状态，主臂起吊的重量还应减去400kg。
- 4 当主钩在臂头部时，使用副臂吊载的额定起重量应减去300kg；使用臂尖滑轮吊载的各臂段额定起重量应减去300kg，但最大起重量为2500kg。
- 5 未使用第五支腿时，前方120°范围不允许吊载。使用第五支腿时，可按表360°吊载作业。
- 6 当实际臂长和工作幅度在两数值之间时，应按较大臂长和幅度值确定起重量。

1. The tabulated values are rated lifting capacities of crane on solid ground and in level state. The tabulated working radii are actual radii after load lifting.
2. The values above the bold line are based on crane strength, those below are based on the crane stability. While lifting with boom length of 10.7m, each section must be fully retracted.
3. The tabulated load values include weight of hooks, main hook is 300kg and aux. hook is 100kg. While the jib is in extension state, the rated load capacity lifted by main boom must be reduced by 400kg.
4. When the main hook is at the head of main boom and lifting with jib, the lifting capacities of jib must be reduced by 300kg. When working with head pulley, the rated lifting capacities of each section must be reduced by 300kg, while the max. lifting capacity is 2500kg.
5. Lifting 120° in front of the crane is not allowed when the fifth outrigger is not in use. With the fifth outrigger extended, lifting operation according to the tabulated values in 360° range could be fulfilled.
6. If an actual boom length or a working radius is between two values in the table, lifting capacity should be determined according to larger ones of the two values.

基本臂臂长	Boom base length	10.7(m)
最大额定起重量	Max. rated lifting capacity	20(t)
幅度范围	Working radius	3-8(m)
最大起升高度	Max. lifting height	10.45(m)
全臂臂长	Fully extended boom	31.7(m)
最大起重量	Max. lifting capacity	6(t)
幅度范围	Working radius	6-24(m)
最大起升高度	Max. lifting height	31.58(m)
副臂臂长	Jib length	8(m)
最大起重量	Max. lifting capacity	2.5(t)
幅度范围	Working radius	10-32(m)
最大起升高度	Max. lifting height	39.31(m)
主卷扬单绳起升速度	Single line speed of main hook	0-130 (m/min)
副卷扬单绳起升速度	Single line speed of aux. hook	0-90 (m/min)
回转速度	Slewing speed	0-2.3(m/min)
变幅起落	Elevating up / down	起 ≤ 60 落 ≤ 55 (s)
支腿收放	Outrigger telescoping: extending / retracting	伸 ≤ 60 缩 ≤ 37(s)
伸臂缩臂	Boom telescoping: extending / retracting	伸 ≤ 90 缩 ≤ 70(s)
最高行驶速度	Max. traveling speed	75(km/h)
最大爬坡度	Gradeability	28(%)
最小转弯半径	Min. turning radius	11(m)
底盘型号	Chassis type	QZC5302J
驱动形式	Drive	6×4
轴数	Number of axles	3
轮距	Wheel span	前:2.088后:1.80(m)
轴距	Axles base	4225x1350(m)
支腿型式	Outrigger type	H
纵×横	Longitudinal × transverse	5.03 × 5.7 (m)
轮胎规格	Tyre size	12: 00-20-18PR
发动机型号	Engine type	WD615.58
发动机功率	Power of engine	175Kw
发动机最大扭矩	Max. torque of engine	1000Nm
整机总质量	Self-weight in traveling condition	27.80 (t)
整机整备质量	Self-weight in working condition	27.60 (t)
配重	Counter weight	1.8 (t)
整机外形尺寸	Overall dimensions (L×W×H)	12.715×2.50×3.53(m)



起重量表 Lifting Capacities

工作幅度 Working radius (m)	主臂 Main boom						主臂全伸+副臂 (31.7m+8m) Boom + Jib	
	支腿全伸, 360度全方位作业 (前方作业时, 必须撑第五支腿) 360° working range with outriggers fully extended (The fifth outrigger must be extended before working in front)						副臂安装角度 Jib angle	
	10.7m	14.9m	19.1m	23.3m	27.5m	31.7m	1°	30°
3.0	20000	14000	12000					
3.5	20000	14000	12000					
4.0	19000	14000	12000	9500				
4.5	18500	14000	12000	9500				
5.0	17000	14000	12000	9500	7500			
5.5	15000	13500	12000	9500	7500			
6.0	13000	13000	11500	9500	7500	6000		
6.5	11700	12000	11000	9000	7500	6000		
7.0	10500	10500	10500	8500	7000	6000		
8.0	8500	8500	8500	7500	6500	5500		
9.0		6800	7000	7000	6000	5000		
10.0		5700	5800	5800	5500	4500	2500	
11.0		4600	4900	5000	5000	4100	2400	1500
12.0		4100	4200	4200	4200	3800	2300	1450
14.0			3500	3200	3200	3200	2200	1400
16.0			3000	2500	2500	2500	2050	1350
18.0				1900	2000	1900	2000	1300
20.0					1550	1500	1600	1250
22.0					1200	1150	1300	1200
24.0						900	800	1100
26.0							600	950
28.0							500	700
30.0							450	500
32.0							300	350
倍率 Line number	8		4		3		1	

工作范围 Working Range

