

LT1025 汽车起重机主要特点

LT1025 Main Performance Advantages

LT1025汽车起重机，是在消化移植国外先进技术的基础上，结合我公司创新技术而开发研制的，其专用底盘，六边形起重臂、四节臂伸缩系统、液压系统、液压先导比例操纵、电气系统和安全装置充分体现了设计的先进性、可靠性、经济性和高效性，上下车均安装空调系统，提高了整机的舒适性，上下车液压系统采用新型防漏接头及管路。整机综合性能指标达到国际九十年代先进水平，超过国内同类产品。

Truck crane LT1025 has been developed out, which is equipped with special chassis, 4-section telescopic boom with hexagonal profile, unique electric system and safety device. The air-conditioners for both superstructure and chassis make the operator more comfortable when operating. Hydraulic system adopts latest leak-proof joints and pipe lines. With latest designing, great reliability, fine economy and high efficiency.

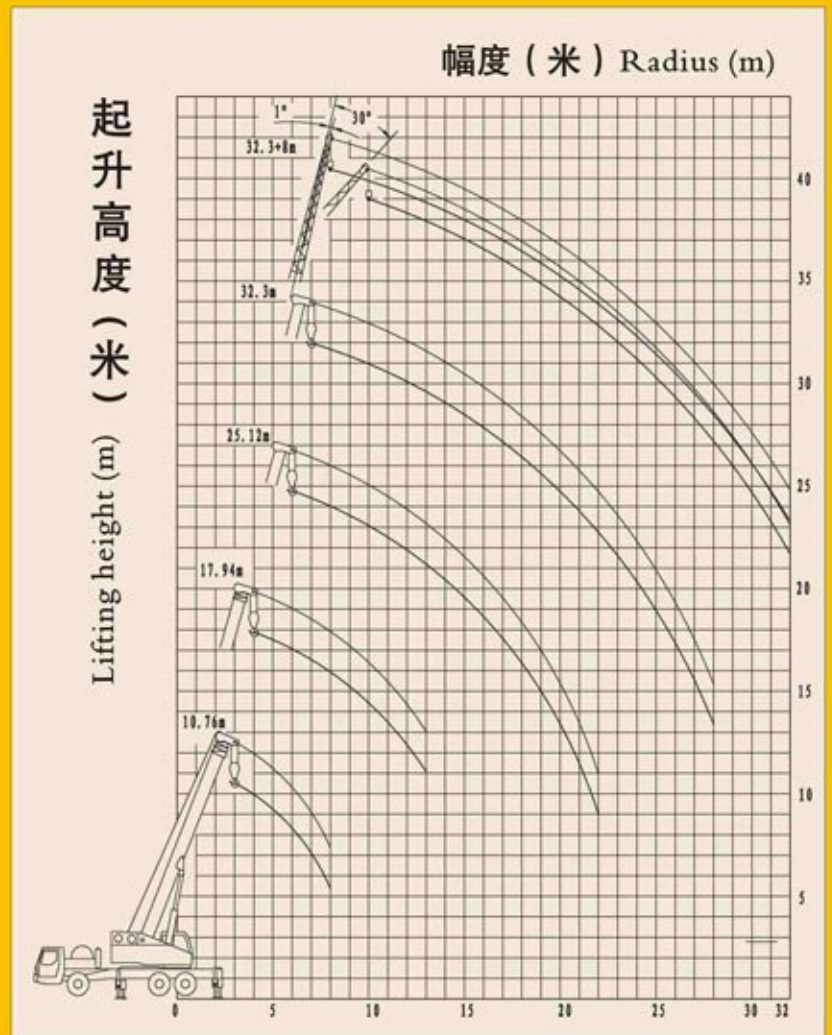
外型尺寸 CONTOUR DIMENSION FIGURE



说明 Note

1. 表中给定数值是在地面坚实，整机状态下，起重机的额定起重量。表中工作幅度是指吊载后的实际幅度。
 2. 表中粗线以上数值为起重臂强度决定，粗线以下数值为整机稳定性决定。臂长10.76m吊载时，各节臂应处于完全缩回状态。
 3. 表中额定起重量包括吊钩及吊具重量，主钩重300kg，副钩重100kg，若副臂处于展开状态，主臂起吊的重量还应减去400kg。
 4. 当主钩在臂头部时，使用副臂吊载的额定起重量应减去300kg；使用臂尖滑轮吊载的各臂段额定起重量应减去400kg，但最大起重量为300kg。
 5. 未使用第五支腿时，前方120°范围不允许吊载。使用第五支腿时，可按表360°吊载作业。
 6. 当实际臂长和工作幅度在两数值之间时，应按较大臂长和幅度值确定起重量。
1. The tabulated values are rated lifting capacities of crane on solid ground and in level state. The tabulated working radii are actual radii after load lifting.
 2. The values above the bold line are based on crane strength, those below are based on the crane stability. While lifting with boom length of 10.76m, each section must be fully retracted.
 3. The tabulated load values include weight of hooks, and hoisting tool main hook is 300kg and aux. hook is 100kg. While the jib is in extension state, the rated load capacity lifted by main boom must be reduced by 400kg.
 4. When the main hook is at the head of main boom and lifting with jib, the lifting capacities of jib must be reduced by 300kg. When working with head pulley, the rated lifting capacities of each section must be reduced by 400kg, while the max. lifting capacity is 300kg.
 5. Lifting 120° in front of the crane is not allowed when the fifth outrigger is not in use. With the fifth outrigger extended, lifting operation according to the tabulated values in 360° range could be fulfilled.
 6. If an actual boom length or a working radius is between two values in the table, lifting capacity should be determined according to larger ones of the two values.

基本臂臂长	Boom base length	10.76 (m)
最大额定起重量	Max. rated lifting capacity	25 (t)
幅度范围	Working radius	3-8(m)
最大起升高度	Max. lifting height	10.51 (m)
全臂臂长	Fully extended boom	32.3 (m)
最大起重量	Max. lifting capacity	6.5 (t)
幅度范围	Working radius	7-28(m)
最大起升高度	Max. lifting height	31.94 (m)
副臂臂长	Jib length	8 (m)
最大起重量	Max. lifting capacity	2.5 (t)
最大起升高度	Max. lifting height	40.44 (m)
起升速度	Lifting speed: main hoist aux. Hoist	主卷扬0-145(m/min) 副卷扬0-145(m/min)
回转速度	Slewing speed	0-1.5(r/min)
起重臂全程起/落时间	Elevating up / down	≤ 78 ≤ 70 (s)
起重臂全程伸/缩时间	Boom telescoping: extending / retracting	≤ 90 ≤ 70 (s)
支腿收放时间	Outrigger telescoping: horizontal: retracting / extending vertical: retracting / extending	水平收/放≤30/33 (s) 垂直收/放≤30/33 (s)
底盘型号	Chassis type	QZC5340J
驱动形式	Drive	6 × 4
最高行驶速度	Max. traveling speed	80 (km/h)
最大爬坡度	Gradeability	25%
最小转弯半径	Min. turning radius	11 (m)
接近角	Approach angle	17.5度
离去角	Angle of departure	12度
支腿跨距	Longitudinal × transverse	5.03×5.85 (m)
轴距	Axles base	4225×1350 (kg)
轮距	Wheel span	一桥2.088二、三桥1.800 (m)
轮胎规格	Tyre size	12: 00-20-18PR
发动机型号	Engine type	WD615.67A/WD615.50
发动机功率	Power of engine	206kw/2200r/min
发动机最大扭矩	Max. torque of engine	1160Nm/1100-1600r/min
整机总质量	Self-weight in traveling condition	29000 (kg)
整机外形尺寸(长×宽×高)	Overall dimensions (L×W×H)	12.75 × 2.5 × 3.504 (m)



起重量表 Lifting Capacities

支腿全伸后方和侧方作业 支腿全伸+第五支腿360°作业
Working on right, left and rear with outriggers fully extended
360°orking range with outriggers + the fifth outrigger fully extended

工作幅度 Working radius	主臂 Main boom				主臂+副臂 Boom + Jib 32.3m+8m	
	臂长 (m) Boom length				副臂安装角 Jib angle	
	10.76	17.94	25.12	32.3	1°	30°
3.0	25000					
3.5	25000					
4.0	24000	14700				
4.5	21500	14700				
5.0	18800	14600				
5.5	17200	14000				
6.0	15700	13500	8800			
7.0	12100	12200	8200	6500		
8.0	9800	9900	7500	6100	2500	
9.0		8100	7100	5500	2500	
10.0		6800	6400	5000	2500	1250
11.0		5800	5500	4700	2500	1200
12.0		5000	5100	4300	2400	1130
13.0		4100	4250	4000	2300	1070
14.0			3900	3800	2100	1020
15.0			3250	3500	2000	950
16.0			2900	3100	1800	900
18.0			2700	2500	1700	800
20.0			1700	1850	1500	700
22.0			1400	1400	1300	600
24.0				1100	1000	480
26.0				900	850	350
28.0				700	500	260
30.0					300	200
倍率 Line numbers	9	5	4	3	1	1

工作范围 Working Range

