

LT1050汽车起重机主要特点

LT1050 Main Performance Advantages

LT1050汽车起重机采用自制的8x4专用底盘，主要部件均选用国内外优质元件。

LT1050起重机配置斯太尔增压中冷发动机（排放符合欧II标准），选用原装进口英国Lipe离合器，液压系统采用新型防漏接头及管路。进口先导比例控制阀。配置PAT力矩限制器，齐星全宽驾驶室，大圆弧挡风玻璃，上下车配冷暖空调。

起重机设五节六边型主臂，两节副臂。

Made-self drive 8×4 special carrier with high quality main components and parts being purchased at home and abroad.

Equipped with Steyr turbocharged medium-cooled diesel engine (according to European standard II), British Lipe clutch, hydraulic system with latest leak-proof joints and pipe lines, piloted proportional control valve, German PAT load moment limiter and low-line type driver's cab with whole block glass and cool & hot air conditioners.

5-section main boom with hexagonal profile and 2-section jib.

外型尺寸 Contour Dimension Figure

总宽:Width: 2750 (mm)



说明 Note:

- 1、表中给定数值是在地面坚实，整机调平状态下起重机的额定起重量。表中工作幅度是指吊载后的实际幅度。注意副臂的工作幅度是完全伸出主臂（41m），并展开副臂进行作业时的数值。
- 2、打好第五支腿时，表中数值适用于沿圆周360°作业。
- 3、表中粗线以上数值为起重臂强度决定，粗线以下数值为整机稳定性决定，臂长10.8m吊载时，各节臂应处于完全缩回状态。
- 4、表中额定起重量包括吊钩重量及吊具重量：主钩重800kg公斤，副钩重120kg。使用臂尖滑轮时的额定起重不超过4000kg。若副臂处于展开状态，主臂起吊的额定起重量应减少2300kg。
- 5、如果臂长超过表中某一栏规定的数值时，应把该栏数值与比更长一级的数值相比较，按照其中较小的额定起重量进行作业。
- 6、表中最低栏列出各种臂长度时的主臂最小仰角，严禁将起重臂变幅到所对应的最小仰角以下。
- 7、副臂吊载时，若主钩仍保留在主臂头部，则副臂起吊的额定起重量中，必须减去主钩的重量。

1. The tabulated values are rated lifting capacities of the crane leveled and standing on firm supporting surface. The tabulated working radii are actual radii with load lifted. The working radii of jib is the value of the fully extended boom (41m) + jib.

2. When the fifth outrigger is in use, the tabulated value is suitable for 360° working range.

3. The values above the bold line are based on boom strength, those below are based on the crane stability. Load for 10.8m boom length shall be lifted with boom fully retracted.

4. The weights of main hook 800kg and aux. hook 120kg are included in the tabulated values. When working with boom head pulley, the rated lifting capacities are no more than 4000kg. If the jib is fixed in working position, the rated lifting capacities at the boom must be reduced by 2300kg.

5. If the actual boom length exceeds the value rated in a certain column, the value in this column may be compared with the next longer one, then actual lifting capacity must be according to the smaller one.

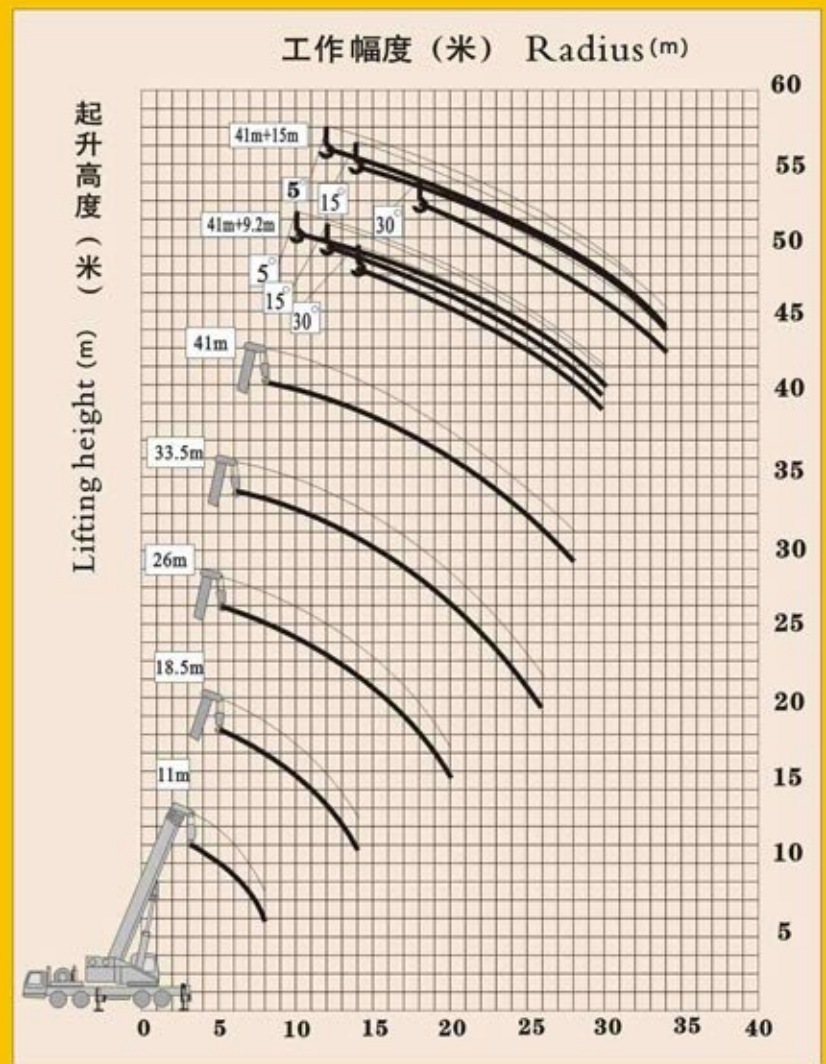
6. The bottom column in the table lists all min. boom angle of elevation in various boom length. Elevating the boom below the corresponding min. angle of elevation is strictly forbidden.

7. When lifting with jib and the main hook is at the head of main boom, the lifting capacity of jib must be reduced by the weight of hook.

主要技术参数 Main Specifications

| | | |
|----------------|---|-------------------------------------|
| 基本臂臂长 | Boom base length | 11.0 (m) |
| 最大起重量 | Max. lifting capacity | 60 (t) |
| 幅度范围 | Working radius | 3-8(m) |
| 最大起升高度 | Max. lifting height | 10.94 (m) |
| 全臂臂长 | Fully extended boom | 41 (m) |
| 最大起重量 | Max. lifting capacity | 8.5 (t) |
| 幅度范围 | Working radius | 8-28(m) |
| 最大起升高度 | Max. lifting height | 40.87 (m) |
| 副臂臂长 | Jib length | 9.2-15(m) |
| 最大起重量 | Max. lifting capacity | 3.5(t) |
| 幅度范围 | Working radius | 10-34(m) |
| 最大起升高度 | Max. lifting height | 55.78(m) |
| 单绳起升速度 | Single line lifting speed | 0-106(m/min) |
| 回转速度 | Slewing speed | 0-1.6(r/min) |
| 全程变幅起/落时间 | Elevating up / down | ≤101/≤110(S) |
| 起重臂全程伸/缩时间 | Boom fully extending / retracting | ≤198/≤121(S) |
| 支腿收放时间 | Outrigger telescoping: horizontal: retracting / extending vertical: retracting / extending | 水平收/放≤34/≤35 (s) 垂直收/放≤40/45 (s) |
| 底盘型号 | Chassis type | QZC5430J |
| 驱动形式 | Drive | 8x4 |
| 最高行驶速度 | Max. traveling speed | 74 (km/h) |
| 最大爬坡度 | Gradeability | 35% |
| 最小转弯半径 | Min. turning radius | ≤12 (m) |
| 接近角 | Approach angle | 18° |
| 离去角 | Angle of departure | 13.5° |
| 支腿跨距 | Longitudinal × transverse | 5.5×7.2 (m) |
| 轮胎规格 | Tyre size | 12.00-20-20PR |
| 发动机型号 | Engine type | WD615.44 |
| 发动机功率 | Power of engine | 243kw/2200r/min |
| 发动机最大扭矩 | Max. torque of engine | 1250Nm/1300-1600r/min |
| 整机总质量 | Self-weight | 42500 (kg) |
| 整机外形尺寸 (长×宽×高) | Overall dimensions (L×W×H) | 13.35x2.75x3.655(m) |

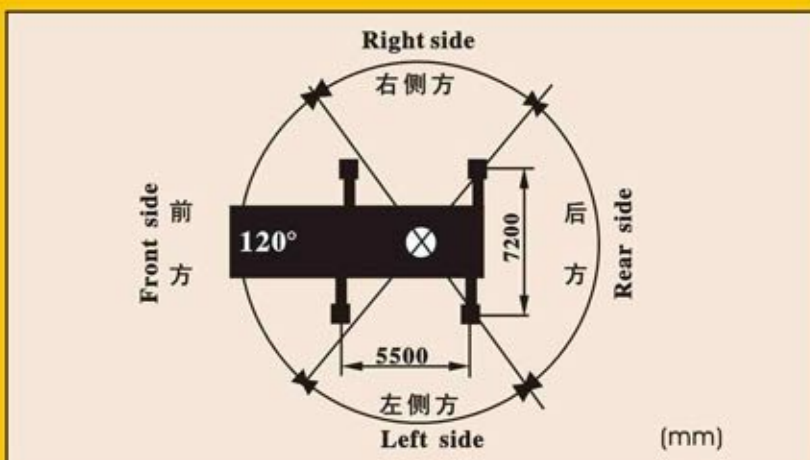
起升高度曲线 Curve of Lifting Height



起重量表 Lifting Capacities

| 工作幅度 Working radius (m) | 支腿全伸, 后方侧方作业 支腿全伸, +第五支腿360°作业 Working on right, left and rear with outriggers fully extended 360° working range with outriggers + the fifth outrigger fully extended | | | | | | | | | | |
|--|---|-------|-------|-------|------|-----------------------------|------|------|------------------------------|------|------|
| | 主臂 Main boom | | | | | 主臂+副臂 Boom + Jib 41m+9.2 | | | 主臂+副臂 Boom + Jib 41m +15m | | |
| | 11m | 18.5m | 26m | 33.5m | 41m | 5° | 15° | 30° | 5° | 15° | 30° |
| 3.0 | 60000 | | | | | | | | | | |
| 3.5 | 50500 | | | | | | | | | | |
| 4.0 | 43500 | | | | | | | | | | |
| 5.0 | 36000 | 28000 | 19200 | | | | | | | | |
| 6.0 | 25600 | 23500 | 18300 | 13800 | | | | | | | |
| 7.0 | 20000 | 19400 | 17200 | 13600 | | | | | | | |
| 8.0 | 16000 | 15000 | 15500 | 12800 | 8500 | | | | | | |
| 9.0 | | 12000 | 13000 | 11700 | 8200 | | | | | | |
| 10.0 | | 9600 | 10800 | 10600 | 7800 | 3500 | | | | | |
| 11.0 | | 7900 | 9000 | 9300 | 7400 | 3200 | | | | | |
| 12.0 | | 6800 | 7700 | 8200 | 7000 | 3000 | 2400 | | 2400 | | |
| 14.0 | | 4800 | 5800 | 6300 | 6200 | 2700 | 2200 | 2000 | 2300 | 1500 | |
| 16.0 | | | 4400 | 4800 | 5100 | 2500 | 2000 | 1800 | 2000 | 1400 | |
| 18.0 | | | 3300 | 3800 | 4000 | 2200 | 1800 | 1700 | 1800 | 1300 | 1000 |
| 20.0 | | | 2500 | 3000 | 3300 | 2000 | 1700 | 1600 | 1600 | 1200 | 1000 |
| 22.0 | | | | 2300 | 2600 | 1800 | 1500 | 1400 | 1400 | 1100 | 900 |
| 24.0 | | | | 1800 | 2100 | 1500 | 1400 | 1300 | 1200 | 1000 | 900 |
| 26.0 | | | | 1400 | 1600 | 1200 | 1200 | 1100 | 1100 | 1000 | 850 |
| 28.0 | | | | | 1200 | 900 | 1000 | 900 | 1000 | 900 | 800 |
| 30.0 | | | | | | 600 | 700 | 700 | 800 | 800 | 750 |
| 32.0 | | | | | | | | 500 | 600 | 700 | 700 |
| 34.0 | | | | | | | | | 500 | 700 | 700 |
| 倍率 Line number | 12 | 7 | 5 | 4 | 3 | 1 | | | 1 | | |
| 主臂最小仰角 Min. angle of elevation of main boom | | | | 28° | 40° | 51° | | | 53° | | |

工作范围 Working Range



产品不断改进和提高, 技术参数和部件配置若有变化和调整, 恕不另行通知, 以订货物时为准。
For further improvement, we reserve the right to amend this specification at any time without notice.

注:表中基本臂 11 米臂长, 黑体字所示为最大起重量, 其余为额定起重量。
Note: The length of boom base in the table is 11m. The values above the bold line are the max. lifting capacities, others are rated lifting capacities.