

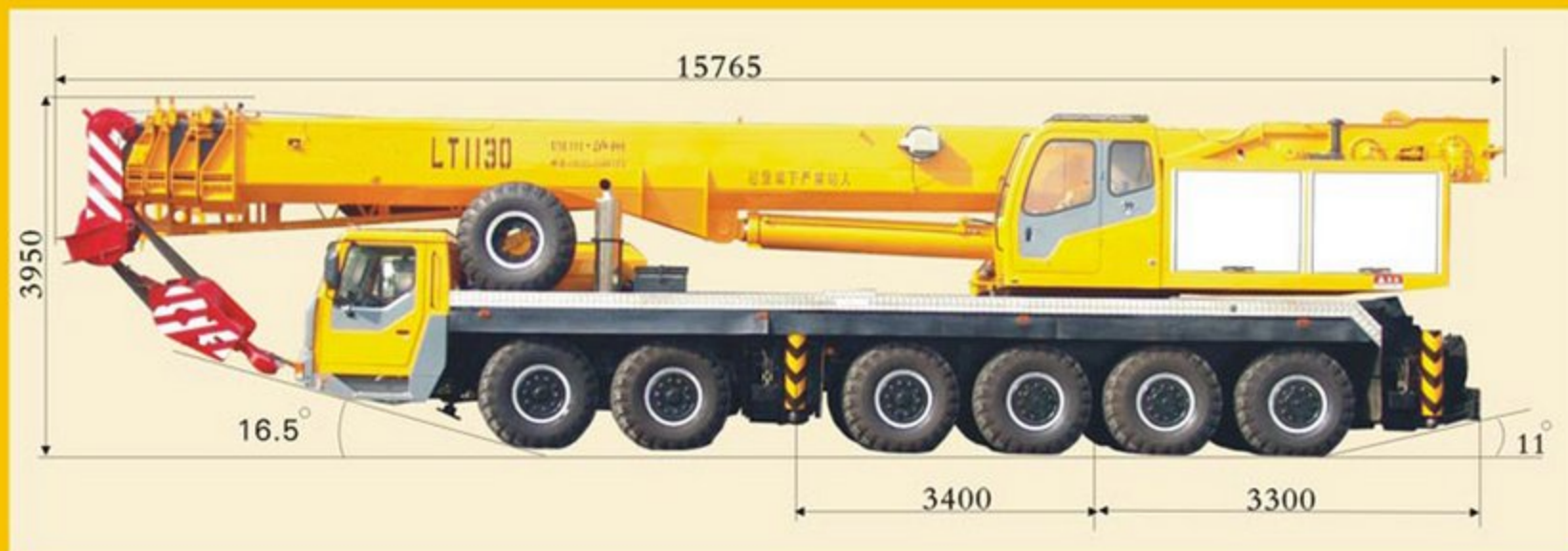
LT1130汽车起重机主要特点

LT1130 Main Performance Advantages

1. 整机采用德国LIEBHERR技术设计，上下车设置Cummins 6BTA5.9、ISX500 发动机。上车操纵室前挡玻璃为大圆弧玻璃，操纵视野宽阔、方便、安全舒适。
2. 12X6驱动形式专用底盘。
3. 国内首创四桥转向。进口方向机、应急转向油泵，转弯半径小，可靠性高。
4. 配置英国Lipe离合器、ZF技术变速箱转向桥和驱动桥为德国开斯兰桥技术生产。
5. 起重机设有五节主臂二节副臂。采用德国PAT公司力矩限制器。
6. 起重机作业操纵采用液压先导比例控制。
7. 选用德国力士乐原装进口与负载压力无关的LUDV流量分配上车主阀，可实现上车任何组合动作。
8. 回转、卷扬机箱、变幅、伸臂、主副卷扬、恒功率控制调节主泵均为力士乐品牌产品。
9. 上下车设置冷暖空调。

1. Designed by German LIEBHERR technologies. Both superstructure and chassis are provided with engine Cummins 6BTA5.9 and ISX500 respectively. Upper cabin is of wide vision, simple control and safety, equipped with big circular arc glass.
2. Special chassis with 12x6 drive system.
3. Provided with 4 steering axles, pioneering in China, steering machine and imported emergency steering oil pump with small turning radius and high reliability.
4. Equipped with British clutch, and gear-box with ZF technologies, steering axles and driving axle with German Kessler technologies.
5. PAT load moment limiter imported from Germany. Five-section main boom and two-section jib are equipped.
6. Lifting operation is controlled by hydraulic piloted proportional control.
7. Superstructure main valve: adopting LUDV flow dividing valve imported from German Rexroth, which does not affect negative pressure and can realize any combining of operational actions.
8. The hydraulic components and parts such as motors for slewing, hoisting, main & auxiliary winches, balance valves for derricking & telescoping and hydraulic pump with constant power control are imported from German Rexroth.
9. Air conditioners with cool & hot are adopted in both driver's cabin and operator's cab.

外型尺寸 Contour Dimension Figure



说明 Note:

1. 表中给定数值是在地面坚实，整机调平状态下起重机的额定起重量。表中工作幅度是指吊载后的实际幅度。注意副臂的工作幅度是完全伸出主臂（49m），并展开副臂进行作业的数值。
2. 打好第五支腿时，表中数值适用于沿圆周360°作业。
3. 表中粗线以上数值为起重臂强度决定，粗线以下数值为整机稳定性决定，臂长13m吊载时，各节臂应处于完全缩回状态。
4. 表中额定起重量包括吊钩重量及吊具重量：主钩重1250公斤，副钩重600kg。使用臂尖滑轮时的额定起重量不超过6000kg。若副臂处于展开状态，主臂起吊的额定起重量应减少2800kg。
5. 如果臂长超过表中某一栏规定的数值时，应把该栏数值与更高一级的数值相比较，按照其中较小的额定起重量进行作业。
6. 表中最底栏列出各种臂长时的主臂最小仰角，严禁将起重臂变幅到所对应的最小仰角以下。
7. 副臂吊载时，若主钩仍保留在主臂头部，则副臂起吊的额定起重量中，必须减去主钩的重量。

1. The tabulated values are rated lifting capacities of the crane leveled and standing on a firm supporting surface. The tabulated working radii are actual radii with load lifted. The working radii of jib is the value of the fully extended boom 49m + jib.
2. When the fifth outrigger is in use, the tabulated value is suitable for 360° working range.
3. The values above the bold line are based on boom strength, those below are based on the crane stability. Capacities for 13 m boom length shall be lifted with boom fully retracted.
4. The weights of main hook 800kg, aux. hook 1250kg are included in the tabulated values. When working with boom head pulley, the rated lifting capacities are not more than 6000kg. If the jib is fixed in working position, the rated lifting capacities at the boom must be reduced by 2800 kg.
5. If the actual boom length exceed the value rated in a Certain column, The value in this column may be compared with the next longer one, then actual lifting capacity must be according to the smaller one.
6. The bottom Column in the table lists all min. boom angle of elevation in various boom length. Derricking the boom to the angle Below the corresponding min. Angle of elevation is strictly forbidden.
7. When lifting with jib and the main hook is at the head of main boom, the lifting capacity of jib must be reduced by the weight of Main hook.

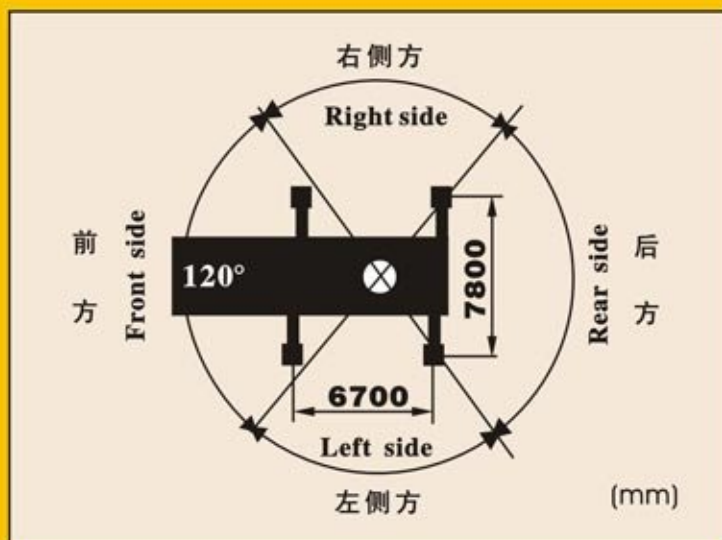
主要技术参数 Main Specifications

起重量表 Lifting Capacities

基本臂臂长	Boom base section	13 (m)
最大额定起重量	Max. rated lifting capacity	130 (t)
最大起升高度	Max. lifting height	13 (m)
全臂臂长	Fully extended boom	49 (m)
额定起重量	Rated lifting capacity	12 (t)
最大起升高度	Max. lifting height	48.5 (m)
副臂臂长	Jib length	9.5-15(m)
最大起重量	Max. lifting capacity	6 (t)
最大起升高度	Max. lifting height	63.6 (m)
主卷扬起升速度	Single line speed of main hook	0-110(m/min)
副卷扬起升速度	Single line speed of aux. hook	0-58 (m/min)
回转速度	Slewing	0-1.6(r/min)
起重臂全程起/落时间	Derricking	135/165(s)
起重臂全程伸/缩时间	Boom telescoping	182/125(m)
支腿垂直全程收/放时间	Vertical outriggers: Extension and retract	≤100/60
支腿水平全程收/放时间	Horizontal outriggers: Extension and retract	≤80/60
底盘型号	Type size	QZC5700J
驱动形式	Drive	12X6
最高行驶速度	Max. traveling speed	71(km/h)
最大爬坡度	Max. gradeability	35(%)
接近角	Approach angle	16
离去角	Departure angle	11
最小转弯半径	Min. turning radius	14.5(m)
轮胎规格	Tyre size	15.5-20
轴距	Axle base(Frong, Middle, Rear)	1.400X2.450X1.400x1.400x1.400(m)
轮距	Wheel span	2.470(m)
支腿跨距纵x横	Outrigger span	6.7X7.8
上车: 发动机型号	Superstructure engine:	康明斯EQ6BTA5.9-C170
发动机功率	Engine power:	125kw/2300r/min
发动机最大扭矩	Engine max. torque:	630Nm/1400-1600rpm
下车: 发动机型号	Chassis engine:	康明斯ISX 500
发动机功率	Engine power:	392Kw/2000r/min
发动机最大扭矩	Engine max. torque:	2237Nm/1100-1600rpm
整机整重	Self-weight	70000 (Kg)
整机外形尺寸(长x宽x高)	Overall dimensions	15.765X3.05X3.95 (m)

工作幅度 (m) Working radius	支腿全伸后方侧方作业 Working on right, left and rear with outriggers fully extended				
	13m	22m	31m	40m	49m
3.0	130000				
3.5	108000				
4.0	96000				
5.0	75000				
6.0	59000	43000	29500		
7.0	50000	37000	27500	24000	
8.0	43200	32000	25500	21000	
9.0	35500	28500	23500	19000	
10.0		25600	19500	17000	12000
11.0		23000	16500	16000	12000
12.0		20000	15500	15000	11400
13.0		16700	15000	13500	10300
14.0		14200	14500	12500	9800
16.0		10500	12500	11200	8500
18.0		7800	9800	10000	7600
20.0			7500	8800	6600
22.0			6000	7100	6000
24.0			4650	5700	5600
26.0			3500	4600	5100
28.0			2600	3600	4400
30.0				2800	3550
32.0				2100	2800
34.0					2150
使用吊钩 Using hook	130t	50t			
吊钩自重 Hook weight	1250kg	600kg			
钢丝绳倍率 Line numbers	14	7	6	4	3
主臂最小仰角 Min. angle of elevation of main boom			35°	35°	45°

工作范围 Working Range



起重量表 Lifting Capacities

工作幅度 (m) Working radius	支腿全伸后方侧方作业 Working on right, left and rear with outriggers fully extended				
	13m	22m	31m	40m	49m
3.0	95000				
3.5	84000				
4.0	71000				
5.0	57000				
6.0	48000	43000	29500		
7.0	41000	37000	27500	24000	
8.0	33000	32000	25500	21000	
9.0	25000	23500	23500	19000	
10.0		18000	19500	17000	12000
11.0		15000	16500	15500	12000
12.0		12000	14000	13500	11000
13.0		10000	12000	1200	10300
14.0		8000	10000	11000	9800
16.0		5000	7000	8200	8500
18.0		2800	5000	6000	6800
20.0			3400	4500	5100
22.0			2100	3100	3800
24.0			1100	2100	2800
26.0				1300	1900
28.0					1200
30.0					
使用吊钩 Using hook	130t	50t			
吊钩自重 Hook weight	1250kg	600kg			
钢丝绳倍率 Line numbers	14	7	6	4	3
主臂最小仰角 Min. angle of elevation of main boom			35°	35°	35°

产品不断改进和提高, 技术参数和部件配置若有变化和调整, 恕不另行通知, 以订货物时为准。
For further improvement, we reserve the right to amend this specification at any time without notice.