

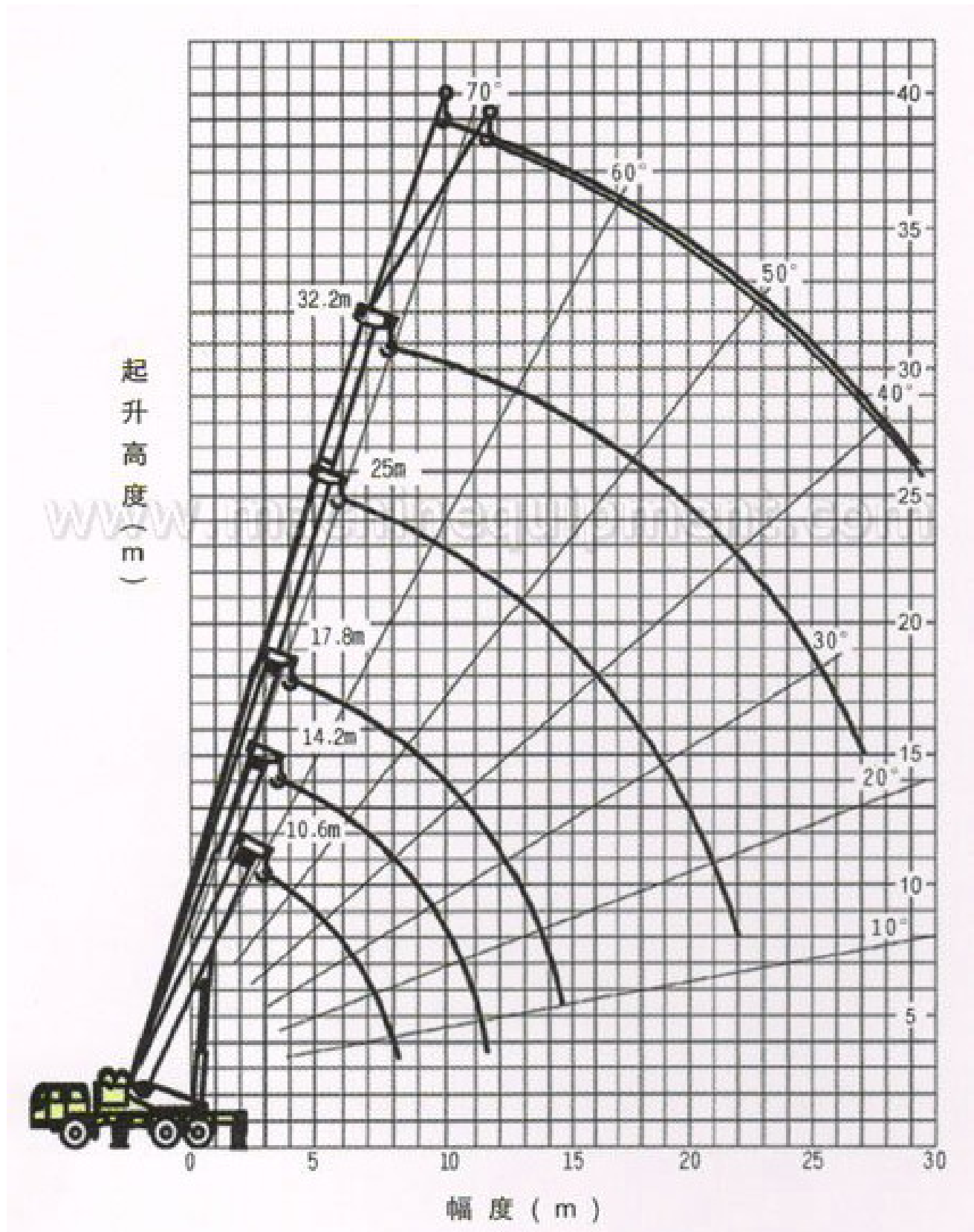
WUHAN MACHINE EQUIPMENT CO., LTD
 2F, BLOCK#7, SBI STREET, GUANG GU, WUHAN, CHINA
 WEB: www.wme.cn EMAIL: info@wme.cn FAX: +86-21-23 010 666



working performance specifications	max rated lifting capacity	25t	
	max lifting moment with min boom length	900kN.m	
	max lifting moment with max boom length	440kN.m	
	boom max lifting height	31.65m	
	jib max lifting height	39.75m	
working speed	single line max speed	114.4m/min	
	lifting boom extending time	144s	
	lifting boom elevating time	70s	
	swing speed	2 rpm	
travelling specifications	max travelling speed	73km/h	
	max gradeability	29% (16°)	
	min turning radius	10m	
	min clearance	270mm	
	approach angle	16°	
	angle of departure	10.5°	
	oil consumption per 100 km	30L	
dimensions	overall dimensions (L x W x H)	12.62x2.5x3.45m	
	outrigger longitudinal span	5m	
	outrigger transversal span	5.9m	
	boom length	32.2m	
	boom angle	0 ~ 75°	
	jib length	8m	
chassis	model	CA5301JQZ	CA5305JQZ
	engine model	CA6DF2-26	CA6DL1-26E3
	engine power	192kW/2200rpm	192kW/2200rpm
	max torque	930N.m/rpm	1050N.m/1300-1700rpm
mass	self-weight in travelling condition	29185Kg	
	front axle load	6885Kg	
	rear axle load	22300Kg	

Lifting Height Curves

Lifting height



lifting radius

Total rated lifting weight for boom

lifting radius	boom					boom+jib (32.2m+8m)		
	10.6m	14.2m	17.8m	25m	32.2m	boom angle	change angle 0°	change angle 15°
3m	25000					72°	2000	1050
3.5m	25000	20000				70°	1850	1000
4m	22500	18500	15000			65°	1300	700
4.5m	20000	16400	14000			60°	1150	400
5m	18000	14800	12600			55°	1000	
5.5m	16300	13400	11400	9500		50°	700	
6m	14500	12300	10500	9000		45°	350	
7m	11000	10500	9000	7500				
8m	9000	8500	7800	6500	5500			
9m		7000	7000	5800	4800			
10m		5500	5600	5200	4400			
11m		4500	4600	4750	4000			
12m		4000	3700	4200	3600			
13m			3200	3800	3200			
14m			2500	3200	2700			
15m			2000	2800	2400			
16m				2400	2250			
18m				1700	2000			
20m				1200	1650			
22m					1250			
24m					920			
26m					550			

*8 times rate on boom length 10.6~17.8m, 4 times rate on boom length 25~32.2m

*weight above bold line is determined by boom intensity, and weight below bold line is determined by crane stability.

*lifting weight including the main hook 308KGS, auxiliary hook 50KGS.

*lifting in side or back of the crane.

*when jib extended, lifting weight should reduce 600kg.

NOTICE: All dimensions are approximate. Specifications are subject to change without notice.