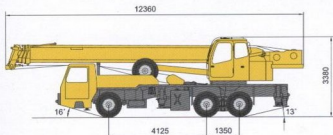


QY25K 全液压汽车起重机



尺寸参数 Dimensions

| | |
|---------------------|---------|
| 整机全长 Overall length | 12360mm |
| 整机全宽 Overall width | 2500mm |
| 整机全高 Overall height | 3380mm |



▲ 整机外形尺寸 Outline dimensions



重量参数 Weight

| | |
|--------------------------------------|---------|
| 行驶状态整机质量 Dead weight in travel state | 27900kg |
| 轴荷 Axle load | |
| 前轴 Front axle | 6100kg |
| 后轴 Rear axle | 21800kg |



动力参数 Power

| | | |
|-----------------------------|---------------------|----------------------|
| 发动机型号 Engine model | 6C215-2 | SC6DK280Q3 |
| 发动机额定功率 Engine rated output | 158/2200kW/(r/min) | 206/2200kW/(r/min) |
| 发动机额定扭矩 Engine rated torque | 790/1400N.m/(r/min) | 1112/1400N.m/(r/min) |
| 发动机额定转速 Max.travel speed | 2200r/min | 2200r/min |



行驶参数 Travel

| | | |
|---------------------------------------------|---------|---------|
| 最高行驶速度 Max.travel speed | 72km/h | 72km/h |
| 最小转弯直径 Min.turning diameter | 22000mm | 22000mm |
| 最小离地间隙 Min.ground clearance | 260mm | 260mm |
| 接近角 Approach angle | 16° | 16° |
| 离去角 Departure angle | 13° | 13° |
| 制动距离(车速为30km/h) Braking distance(at 30km/h) | 10m | 10m |
| 最大爬坡能力 Max.gradeability | 27% | 30% |
| 百公里油耗 Fuel consumption of 100km | - 35L | - 35L |



主要性能参数 Lifting performance

| | |
|---------------------------------------------|------------|
| 最大额定总起重量 Max.total rated lifting load | 25t |
| 最小额定幅度 Min.rated working radius | 3m |
| 转台尾部回转半径 Turning radius at swing table tail | 3065mm |
| 最大起重力矩 Max.load moment | |
| 基本臂 Base boom | 948.15kN.m |
| 最长主臂 Full-extend boom | 521kN.m |
| 最长主臂+副臂 Full-extend boom+Jib | 331kN.m |
| 支腿距离 Outrigger extension distance | |
| 纵向/横向 Longitudinal/Lateral | 4.8/6.0m |
| 起升高度 Lifting height | |
| 基本臂 Base boom | 10.5m |
| 最长主臂 Full-extend boom | 32.5m |
| 最长主臂+副臂 Full-extend boom+Jib | 40.8m |



工作速度参数 Working speed

| | |
|-------------------------------------------------------------|-------------|
| 起重臂全程起臂 Boom raising | 75s |
| 起重臂伸缩时间 Boom telescoping time | |
| 全程全伸/缩 Full - extending / retracting | 100/60s |
| 最大回转速度 Max.slewing speed | 2.5r/min |
| 支腿伸缩时间 Outrigger telescoping time | |
| 水平支腿同时伸/缩 Outrigger beam extending/retracting synchronously | 35/30s |
| 垂直支腿同时伸/缩 Outrigger jack extending/retracting synchronously | 40/35s |
| 起升速度(单绳) Hoisting speed(single rope) | |
| 主起升机构满载/空载 Main winch with full load/no load | 70/100m/min |
| 副起升机构满载/空载 Auxiliary winch with full load/no load | 60/100m/min |

四节八边形伸缩式吊臂
4-section octagonal telescopic boom

流线型整体式复合材料壳体的驾驶室,操纵室
streamlined and integrated driver's cab and operator's cab made of complex material



FULL HYDRAULIC TRUCK CRANE



主臂起重性能表 Total rated lifting load for boom (表一 Table 1)

| 全伸支腿 (侧方、后方作业) Full-extend outrigger with boom at the side or the rear | | | | | | | | | |
|------------------------------------------------------------------------|------------------------------|-------------------------------|---------------------------------|-------------------------------|----------------------------------|-------------------------------|-----------------------------------|-------------------------------|--|
| 工作幅度 Working radius m | 基本臂 Base boom 10.40m | | 中长臂 Mid-extend boom 17.6m | | 中长臂 Mid-extend boom 24.80m | | 全伸臂 Full-extend boom 32.00m | | |
| | 起重重量 Lifting Load (kg) | 起升高度 Lifting Height (m) | 起重重量 Lifting Load (kg) | 起升高度 Lifting Height (m) | 起重重量 Lifting Load (kg) | 起升高度 Lifting Height (m) | 起重重量 Lifting Load (kg) | 起升高度 Lifting Height (m) | |
| 3.0 | 25000 | 10.50 | 14700 | 18.11 | | | | | |
| 3.5 | 25000 | 10.25 | 14700 | 17.98 | | | | | |
| 4.0 | 24000 | 9.97 | 14700 | 17.82 | 9100 | 25.28 | | | |
| 4.5 | 21500 | 9.64 | 14700 | 17.65 | 9100 | 25.16 | | | |
| 5.0 | 18700 | 9.28 | 14200 | 17.47 | 9100 | 25.03 | | | |
| 5.5 | 17200 | 8.86 | 13500 | 17.26 | 9100 | 24.89 | 6500 | 32.32 | |
| 6.0 | 15700 | 8.39 | 13000 | 17.04 | 8800 | 24.74 | 6500 | 32.20 | |
| 7.0 | 12100 | 7.22 | 12000 | 16.54 | 8200 | 24.41 | 6500 | 31.95 | |
| 8.0 | 9600 | 5.54 | 9900 | 15.95 | 7500 | 24.02 | 6100 | 31.66 | |
| 9.0 | | | 8100 | 15.27 | 7100 | 23.59 | 5500 | 31.33 | |
| 10.0 | | | 6800 | 14.48 | 6400 | 23.10 | 5000 | 30.97 | |
| 12.0 | | | 5000 | 12.49 | 5060 | 21.94 | 4300 | 30.13 | |
| 14.0 | | | 3800 | 9.60 | 3900 | 20.51 | 3800 | 29.12 | |
| 16.0 | | | | | 3100 | 18.74 | 3100 | 27.93 | |
| 18.0 | | | | | 2530 | 16.52 | 2500 | 26.52 | |
| 20.0 | | | | | 2000 | 13.61 | 1960 | 24.95 | |
| 22.0 | | | | | 1650 | 9.29 | 1600 | 22.90 | |
| 24.0 | | | | | | | 1290 | 20.54 | |
| 26.0 | | | | | | | 1020 | 17.60 | |
| 28.0 | | | | | | | 810 | 13.71 | |
| 29.0 | | | | | | | 700 | 11.07 | |
| 幅度 Reach of jib | 10 | | 6 | | 4 | | 3 | | |
| 吊钩重量 Weight of hook block | | | | | | | | 250kg | |
| 最小主臂仰角 Min boom angle | 28° | | 30° | | 20° | | 19° | | |
| 最大主臂仰角 Max boom angle | 68° | | 76° | | 78° | | 78° | | |



副臂起重性能表 Total rated lifting load for jib (表二 Table 2)

| 主臂Boom32m+副臂Jib8.15m, 侧后方 At the side or the rear | | | | | | |
|---------------------------------------------------|------------------------------|------------------------------|------------------------------|------------------------------|------------------------------|------------------------------|
| 补偿角 Offset angle | | | | | | |
| 主臂仰角 Boom angle | 0° | | 15° | | 30° | |
| | 幅度 Working Radius (mm) | 起重重量 Lifting Load (kg) | 幅度 Working Radius (mm) | 起重重量 Lifting Load (kg) | 幅度 Working Radius (mm) | 起重重量 Lifting Load (kg) |
| 78° | 9000 | 2800 | 11000 | 2500 | 13000 | 1900 |
| 75° | 11000 | 2800 | 13000 | 2400 | 14700 | 1750 |
| 72° | 13000 | 2750 | 15000 | 2200 | 16600 | 1700 |
| 70° | 14200 | 2650 | 16200 | 2100 | 17800 | 1600 |
| 65° | 17500 | 2150 | 19400 | 1800 | 20800 | 1500 |
| 60° | 20500 | 1800 | 22400 | 1600 | 23800 | 1400 |
| 55° | 23200 | 1400 | 25300 | 1300 | 26500 | 1230 |
| 50° | 26500 | 1000 | 28000 | 900 | 29000 | 900 |
| 40° | 31500 | 500 | 32500 | 400 | 33300 | 400 |

使用吊钩 With hook block 50kg

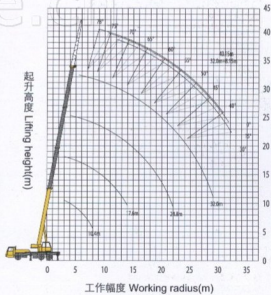
注:

对表一、表二中起重量的说明:

- ◆ 表中额定起重重量所表示的数值,是在平整的坚固地面上本起重机能保证的最大起重重量。
- ◆ 表中额定起重重量包括吊钩和吊具的重量。
- ◆ 表中的工作幅度是包括吊臂的变形量在内的实际值,因此一定以工作幅度为依据进行起重作业。
- ◆ 即风压为125N/m²允许达7级风时起重机仍可作业。
- ◆ 表一起升高度及表二的幅度均为参考值。

Notes: about table 1 and table 2:

- ◆ The data in the table are the max. lifting capacity when the crane is set up on level and firm ground.
- ◆ The total rated lifting load in the table includes the weight of hook block and slings.
- ◆ The working radius in the table is the actual value including boom deflection under loads.
- ◆ Wind pressure 125N/m². Lifting operation is also allowed under the condition of wind force scale 7.
- ◆ Lifting height in table 1 and working radius in table 2 are reference value.



▲ 起升高度曲线 Lifting height area

注: 公司保留随技术改进而修改技术参数及附件的权限
All specifications are subject to technical modifications without notice