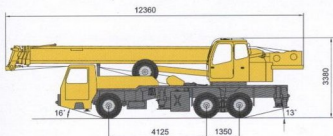


QY25K 全液压汽车起重机



尺寸参数 Dimensions

整机全长 Overall length	12360mm
整机全宽 Overall width	2500mm
整机全高 Overall height	3380mm



▲ 整机外形尺寸 Outline dimensions



重量参数 Weight

行驶状态整机质量 Dead weight in travel state	27900kg
轴荷 Axle load	
前轴 Front axle	8100kg
后轴 Rear axle	21800kg



动力参数 Power

发动机型号 Engine model	6C215-2	SC6DK280Q3
发动机额定功率 Engine rated output	158/2200kW/(r/min)	206/2200kW/(r/min)
发动机额定扭矩 Engine rated torque	790/1400N.m/(r/min)	1112/1400N.m/(r/min)
发动机额定转速 Max.travel speed	2200r/min	2200r/min



行驶参数 Travel

最高行驶速度 Max.travel speed	72km/h	72km/h
最小转弯直径 Min.turning diameter	22000mm	22000mm
最小离地间隙 Min.ground clearance	260mm	260mm
接近角 Approach angle	16°	16°
离去角 Departure angle	13°	13°
制动距离(车速为30km/h) Braking distance(at 30km/h)	10m	10m
最大爬坡能力 Max.gradeability	27%	30%
百公里油耗 Fuel consumption of 100km	~35L	~35L



主要性能参数 Lifting performance

最大额定总起重量 Max.total rated lifting load	25t
最小额定幅度 Min.rated working radius	3m
转台尾部回转半径 Turning radius at swing table tail	3065mm
最大起重力矩 Max.load moment	
基本臂 Base boom	948.15kN.m
最长主臂 Full-extend boom	521kN.m
最长主臂+副臂 Full-extend boom+Jib	331kN.m
支腿距离 Outrigger extension distance	
纵向/横向 Longitudinal/Lateral	4.8/6.0m
起升高度 Lifting height	
基本臂 Base boom	10.5m
最长主臂 Full-extend boom	32.5m
最长主臂+副臂 Full-extend boom+Jib	40.8m



工作速度参数 Working speed

起重臂全程起臂 Boom raising	75s
起重臂伸缩时间 Boom telescoping time	
全程全伸/缩 Full - extending / retracting	100/60s
最大回转速度 Max.slewing speed	2.5r/min
支腿伸缩时间 Outrigger telescoping time	
水平支腿同时伸缩 Outrigger beam extending/retracting synchronously	35/30s
垂直支腿同时伸缩 Outrigger jack extending/retracting synchronously	40/35s
起升速度(单绳) Hoisting speed(single rope)	
主起升机构满载/空载 Main winch with full load/no load	70/100m/min
副起升机构满载/空载 Auxiliary winch with full load/no load	60/100m/min

四节八边形伸缩式吊臂
4-section octagonal telescopic boom

流线型箱体式复合材料壳体的驾驶室,操纵室
streamlined and integrated driver's cab and operator's cab made of complex material





主臂起重性能表 Total rated lifting load for boom (表一 Table 1)

全伸支腿 (侧方、后方作业) Full-extend outrigger with boom at the side or the rear								
工作幅度 Working radius m	基本臂 Base boom 10.40m		中长臂 Mid-extend boom 17.6m		中长臂 Mid-extend boom 24.80m		全伸臂 Full-extend boom 32.00m	
	起重重量 Lifting Load (kg)	起升高度 Lifting Height (m)	起重重量 Lifting Load (kg)	起升高度 Lifting Height (m)	起重重量 Lifting Load (kg)	起升高度 Lifting Height (m)	起重重量 Lifting Load (kg)	起升高度 Lifting Height (m)
3.0	25000	10.50	14700	18.11				
3.5	25000	10.25	14700	17.98				
4.0	24000	9.97	14700	17.82	9100	25.28		
4.5	21500	9.64	14700	17.65	9100	25.16		
5.0	18700	9.28	14200	17.47	9100	25.03		
5.5	17200	8.86	13500	17.26	9100	24.89	6500	32.32
6.0	15700	8.39	13000	17.04	8800	24.74	6500	32.20
7.0	12100	7.22	12000	16.54	8200	24.41	6500	31.95
8.0	9600	5.54	9900	15.95	7500	24.02	6100	31.66
9.0			8100	15.27	7100	23.59	5500	31.33
10.0			6800	14.48	6400	23.10	5000	30.97
12.0			5000	12.49	5060	21.94	4300	30.13
14.0			3800	9.60	3900	20.51	3800	29.12
16.0					3100	18.74	3100	27.93
18.0					2530	16.52	2500	26.52
20.0					2000	13.61	1960	24.95
22.0					1650	9.29	1600	22.90
24.0							1290	20.54
26.0							1020	17.60
28.0							810	13.71
29.0							700	11.07
吊钩 Hook 吊钩重量 Weight of hook block	10		6		4		3	
最大主臂仰角 Max boom angle	28°		30°		20°		19°	
最大主臂仰角 Max boom angle	68°		76°		78°		78°	



副臂起重性能表 Total rated lifting load for jib (表二 Table 2)

主臂 Boom 32m+副臂 Jib 8.15m, 侧后方 At the side or the rear						
补偿角 Offset angle						
主臂仰角 Boom angle	0°		15°		30°	
	幅度 Working Radius (mm)	起重重量 Lifting Load (kg)	幅度 Working Radius (mm)	起重重量 Lifting Load (kg)	幅度 Working Radius (mm)	起重重量 Lifting Load (kg)
78°	9000	2800	11000	2500	13000	1900
75°	11000	2800	13000	2400	14700	1750
72°	13000	2750	15000	2200	16600	1700
70°	14200	2650	16200	2100	17800	1600
65°	17500	2150	19400	1800	20800	1500
60°	20500	1800	22400	1600	23800	1400
55°	23200	1400	25300	1300	26500	1230
50°	26500	1000	28000	900	29000	900
40°	31500	500	32500	400	33300	400

使用吊钩 With hook block 50kg

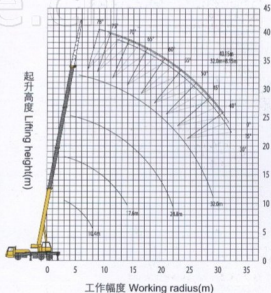
注:

对表一、表二中起重量的说明:

- ◆ 表中额定起重重量所表示的数值,是在平整的坚固地面上本起重机能保证的最大起重重量。
- ◆ 表中额定起重重量包括吊钩和吊具的重量。
- ◆ 表中的工作幅度是包括吊臂的变形量在内的实际值,因此一定以工作幅度为依据进行起重作业。
- ◆ 即风压为125N/m²允许达7级风时起重机仍可作业。
- ◆ 表一起升高度及表二的幅度均为参考值。

Notes: about table 1 and table 2:

- ◆ The data in the table are the max. lifting capacity when the crane is set up on level and firm ground.
- ◆ The total rated lifting load in the table includes the weight of hook block and slings.
- ◆ The working radius in the table is the actual value including boom deflection under loads.
- ◆ Wind pressure 125N/m², Lifting operation is also allowed under the condition of wind force scale 7.
- ◆ Lifting height in table 1 and working radius in table 2 are reference value.



▲ 起升高度曲线 Lifting height area

注: 公司保留随技术改进而修改技术参数及附件的权限
All specifications are subject to technical modifications without notice