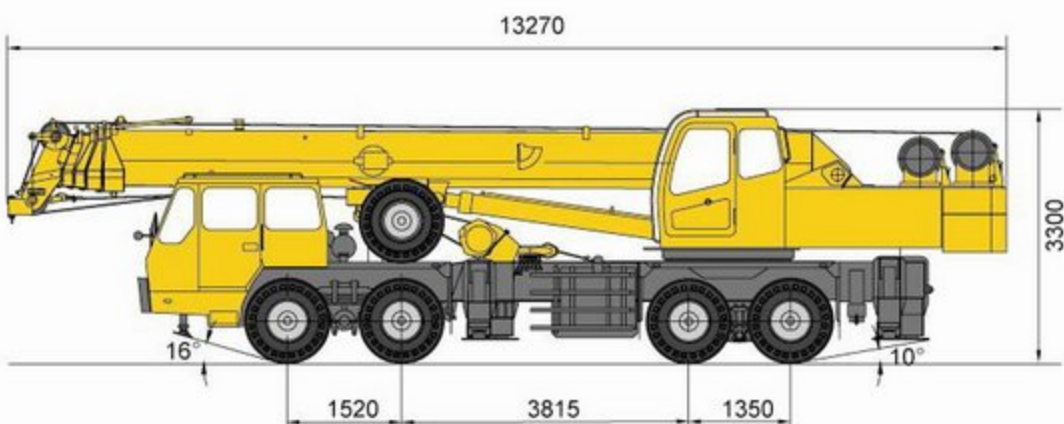


QY50B 全液压汽车起重机



尺寸参数 Dimensions

整机全长 Overall length	13270mm
整机全宽 Overall width	2750mm
整机全高 Overall height	3300mm



▲ 整机外形尺寸 Outline dimensions



重量参数 Weight

行驶状态整机质量 Dead weight in travel state	39870kg
轴荷 Axle load	
前轴 Front axle	13935kg
后轴 Rear axle	25935kg



动力参数 Power

发动机型号 Engine model	WD615.50	WD615.46
发动机额定功率 Engine rated output	206/2200kW/(r/min)	266/2200kW/(r/min)
发动机额定扭矩 Engine rated torque	1160/1400N.m/(r/min)	1460/1400N.m/(r/min)



行驶参数 Travel

最高行驶速度 Max.travel speed	72km/h	78km/h
最小转弯直径 Min.turning diameter	24000mm	24000mm
最小离地间隙 Min.ground clearance	251mm	251mm
接近角 Approach angle	16°	16°
离去角 Departure angle	10°	10°
制动距离(车速为30km/h)Braking distance(at 30km/h)	10m	10m
最大爬坡能力 Max.gradeability	37%	46%
百公里油耗 Fuel consumption of 100km	~ 48L	~ 48L



主要性能参数 Lifting performance

最大额定总起重量 Max.total rated lifting load	50t
最小额定工作幅度 Min.rated working radius	3m
转台尾部回转半径 Turning radius at swing table tail	3.8m
最大起重力矩 Max.load moment	
基本臂 Base boom	1509kN.m
最长主臂 Full-extend boom	631kN.m
支腿距离 Outrigger extension distance	
纵向/ 横向 Longitudinal/Lateral	5.45/6.6m
起升高度 Lifting height	
基本臂 Base boom	11.27m
全伸臂 Extend boom	40.31m
最长主臂 + 副臂 Full-extend boom+Jib	55.8m
副臂安装角 Jib offset	0°、15°、30°



工作速度参数 Working speed

起重臂变幅起臂时间 Boom elevating time	120s
全程伸臂 Full-extending	184s
最大回转速度 Max.slewing speed	2r/min
支腿伸缩时间 Outrigger telescoping time	
水平支腿同时伸/缩 Outrigger beam extending/retracting synchronously	40/42s
垂直支腿同时伸/缩 Outrigger jack extending/retracting synchronously	40/42s
起升速度(单绳) Hoisting speed(single rope)	
主起升机构满载/空载 Main winch with full load	70.8/118m/min
副起升机构满载/空载 Auxiliary winch with full/no load	70.8/118m/min



FULL HYDRAULIC TRUCK CRANE



主臂起重性能表 Total rated lifting load for boom (表一 Table 1)

不支第五全伸支腿(侧方、后方作业)或支起第五支腿360° 作业
Without the 5th outrigger, boom at the side on the rear, or with the 5th outrigger, 360° swing

工作幅度 Working radius m	吊臂长度 Base boom				
	基本臂 Base boom 10.70m	中长臂 Mid-extend boom 18.05m	中长臂 Mid-extend boom 25.40m	中长臂 Mid-extend boom 32.75m	全伸臂 Full-extend boom 40.10m
3.0	50000				
3.5	43000				
4.0	38000				
4.5	34000				
5.0	30500	24700			
5.5	28000	23500			
6.0	24000	22200	16300		
6.5	21000	20000	15000		
7.0	18500	18000	14100	10200	
8.0	14500	14000	12400	9200	7500
9.0	11500	11200	11100	8300	6500
10.0		9200	10000	7500	6000
12.0		6400	7500	6800	5200
14.0		4600	5100	5700	4600
16.0			4000	4700	3900
18.0			3100	3700	3300
20.0			2200	2900	2900
22.0			1600	2300	2400
24.0				1800	2000
26.0				1400	1500
28.0					1200
30.0					900
倍率 Parts of line	12	8	5	4	3
吊钩重量 Weight of hook block	515kg			210kg	



副臂起重性能表 Total rated lifting load for jib (表二 Table 2)

不支第五支腿, 吊臂位于起重机侧方或后方
Without the 5th outrigger, boom is over side or rear
支起第五支腿, 吊臂位于侧方、后方、前方
With the 5th outrigger, boom is over front, side or rear

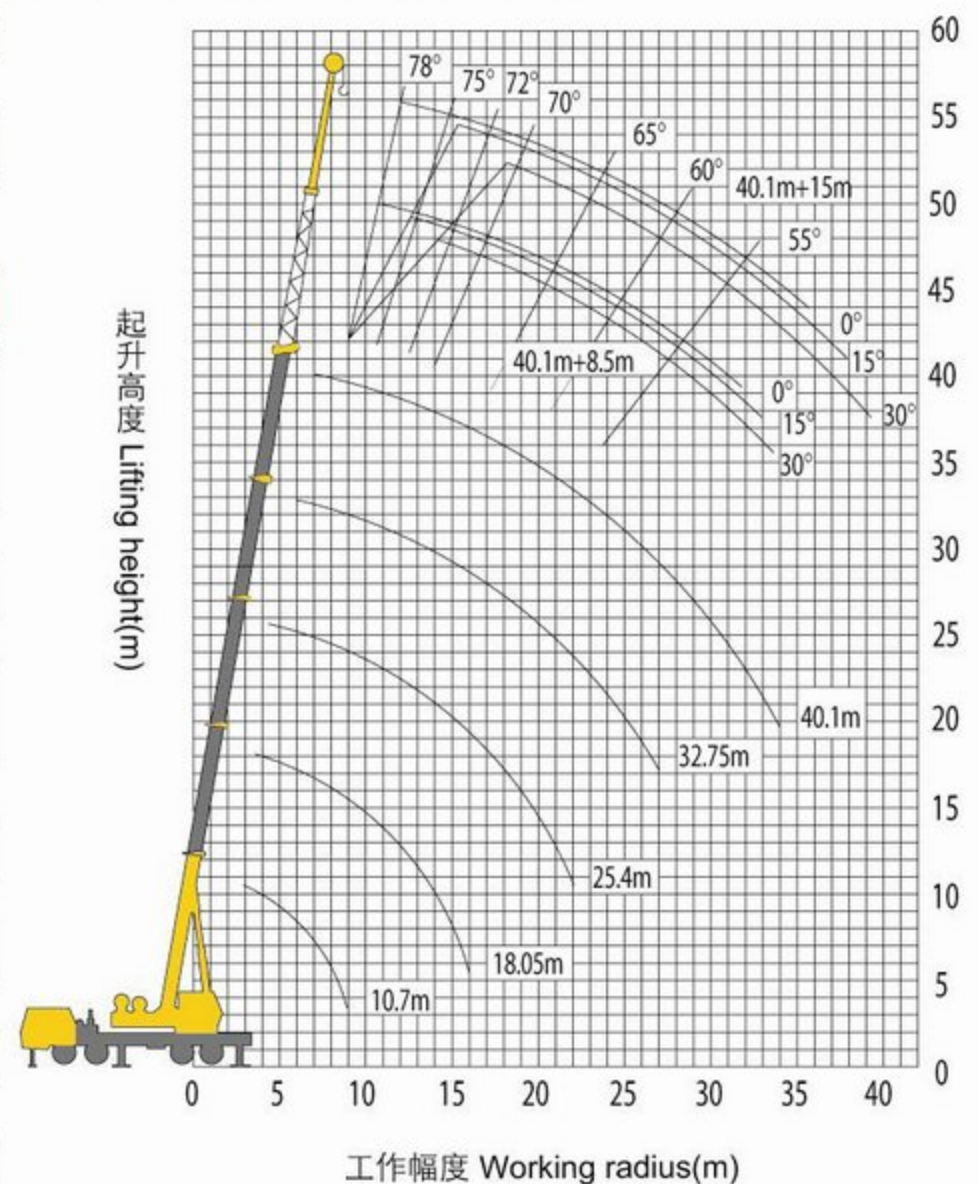
主臂仰角 Boom angle (°)	40.1m主臂 Boom 补偿角 Offset angle					
	0°		15°		30°	
	副臂 Jib 8.5m	副臂 Jib 15m	副臂 Jib 8.5m	副臂 Jib 15m	副臂 Jib 8.5m	副臂 Jib 15m
78	4000	2000	2700	1400	2440	1100
75	3600	2000	2500	1200	2300	1000
72	3200	1800	2300	1150	2200	990
70	2900	1700	2200	1100	2100	950
65	2300	1400	1900	950	1900	880
60	1400	800	1300	600	1200	500
55	600		550		450	
钢丝绳倍率 Parts of line	1					
吊钩重量 Weight of hook block	100kg					

注:

- ◆ 表一为额定起重量表,起重量单位为千克。
- ◆ 起重机应在坚实平坦的地面上作业。
- ◆ 表中所示的起重量包括吊具和附件的重量。
- ◆ 起重机起重作业之前,必须完全支好支腿,必要时包括第五支腿。
- ◆ 起重作业时应选择合适的钢丝绳倍率,起升钢丝绳单绳拉力应不大于4200kg。
- ◆ 臂端单滑轮的起重性能同8.5m副臂(0°)安装角,最大起重量为4吨。

Notes:

- ◆ The data in the table are the max. Lifting capacity when the crane is set up on level and firm ground.
- ◆ The total rated lifting load in the table includes the weight of hook block and slings.
- ◆ The working radius in the table is the actual value including boom deflection under loads. So lifting operation should be performed according to the working radius, lifting height is reference value.
- ◆ Before operating the crane, extend the outrigger fully, including the 5th outrigger if necessary.
- ◆ Select proper wire rope part line for lifting operation. Pulling force of single wire rope is not more than 4200kg.
- ◆ The total rated lifting load of single top is the same as 8.5m jib (offset 0°), max. lifting load is 4t.



注: 公司保留随技术改进而修改技术参数及部件的权利
All specifications are subject to technical modifications without notice