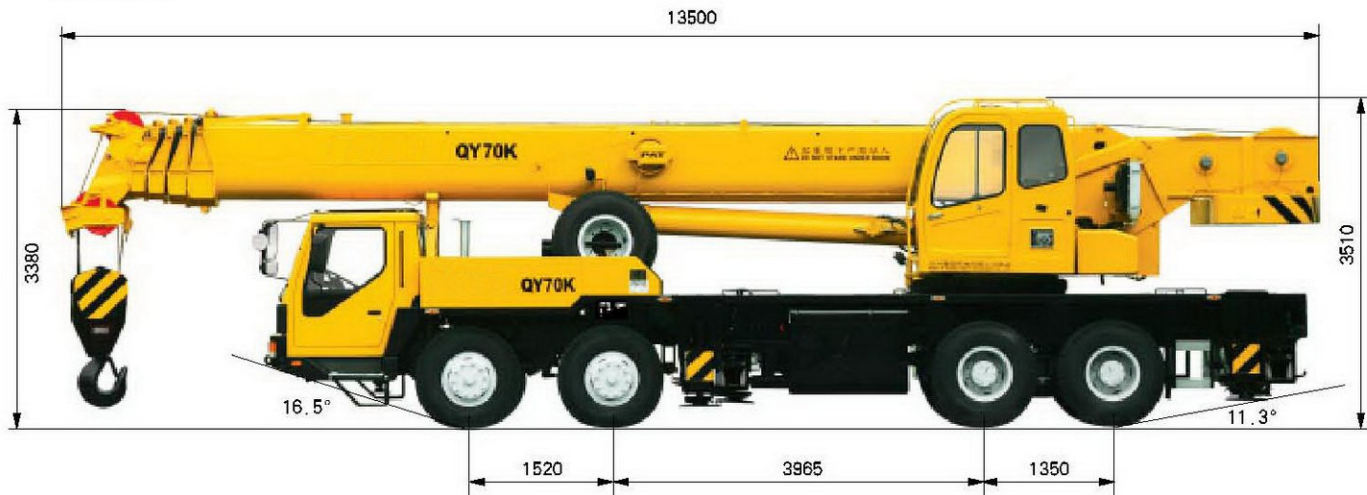


# QY70K 全液压汽车起重机

QY70K 外形尺寸  
Dimensions



尺寸参数 Dimensions

整机全长 Overall length	mm	13500
整机全宽 Overall width	mm	2800
整机全高 Overall height	mm	3510

重量参数 Weight

行驶状态整机重量 Dead weight in travel state	kg	41000
轴荷 Axle load		
前轴 Front Axle	kg	15000
后轴 Rear Axle	kg	26000

动力参数 Power

发动机型号 Engine model		WD615.44	WD615.46
发动机额定功率 Engine rated output	kw/(r/min)	235/2200	266/2208
发动机额定扭矩 Engine rated torque	N.m/(r/min)	1250/1500	1460/1400
发动机额定转速 Max. travel speed	r/min	2200	2200

行驶参数 Travel

最高行驶速度 Max. Travel speed	km/h	75	75
最小转弯直径 Min. turning diameter	m	24	24
最小离地间隙 Min. ground clearance	mm	270	270
接近角 Approach angle	°	16.5°	16.5°
离去角 Departure angle	°	11.3°	11.3°
制动距离 (车速为 30km/h) Braking distance(at 30km/h)	m	10	10
最大爬坡能力 Max. Gradeability	%	35	40
百公里油耗 Fuel consumption of 100km	L	42	42

主要性能参数 Lifting performance

最大额定总起重量 Max. Total rated lifting load	t	70
最小额定幅度 Min. rated working radius	m	3
转台尾部回转半径 Turning radius at swing table tail	mm	3550
最大起重力矩 Max. load moment		
基本臂 Base boom	kN.m	2303
最长主臂 Full-extend boom	kN.m	1043
最长主臂 + 副臂 Full-extend boom+Jib	kN.m	492.8
支腿距离 Outrigger extension distance		
纵向 / 横向 Longitudinal / Lateral	m	5.75 / 6.9
起升高度 Lifting height		
基本臂 Base boom	m	11.2
最长主臂 Full-extend boom	m	42
最长主臂 + 副臂 Full-extend boom+Jib	m	58

工作速度参数 Working speed

起重臂全程起臂 Boom Raising	s	75
起重臂伸缩时间 Boom telescoping time		
全程全伸 / 缩 Full - extending / retracting	s	150 / 100
最大回转速度 Max. Slewing speed	r/min	2.0
支腿伸缩时间 Outrigger telescoping time		
水平支腿同时伸 / 缩 Outrigger beam extending/retracting synchronously	s	30 / 20
垂直支腿同时伸 / 缩 Outrigger jack extending/retracting synchronously	s	35 / 12
起升速度 (单绳) Hoisting speed(single rope)		
主起升机构满载 / 空载 Main winch with full load/no load	m/min	75 / 130
副起升机构满载 / 空载 Auxiliary winch with full load/no load	m/min	98 / 108

# QY70K FULL HYDRAULIC TRUCK CRANE

## QY70K 主臂起重性能表(kg)(两块配重)

Total rated lifting load for boom(two set of counterweight)

支腿全伸, 不支第五支腿, 吊臂位于起重侧或后方, 支起第五支腿, 360° 全回转作业 Full-extend outrigger, without the 5th outrigger, boom at the side or the rear, or with the 5th outrigger, 360° swing						
工作幅度 working radius m	基本臂 Base boom 11.2m	中长臂 Mid-extend boom 15.05m	中长臂 Mid-extend boom 18.9m	中长臂 Mid-extend boom 26.6m	中长臂 Mid-extend boom 34.3m	全伸臂 Full-extend boom 42m
3	7000					
3.5	6350					
4	5450	4650	3650			
5	4700	4050	3550	2250		
6	3850	3350	3350	2250		
7	2950	2650	2550	2150	1700	
8	2250	2150	2130	1950	1600	
9	1750	1750	1700	1700	1500	920
10		1400	1380	1520	1350	890
12		980	950	1060	1160	810
14			660	800	930	740
15			560	700	800	710
16			500	600	700	650
18				480	550	550
20				380	420	480
22				2850	3200	3800
24					2500	3000
26					1900	2300
28					1500	1900
29					1100	1600
30					850	1400
32						1100
34						850
36						600

## QY70K 副臂起重性能表(kg)(两块配重)

Total rated lifting load for jib(two set of counterweight)

支腿全伸 6.9m, 不用第五支腿时, 吊臂位于起重侧或后方, 用第五支腿时, 360° 作业 Full-extend outrigger, without the 5th outrigger, boom at the side or the rear, or with the 5th outrigger, 360° swing						
主臂仰角 Boom angle (°)	主臂 Boom 42m					
	副臂 Jib 8.5m			副臂 Jib 15m		
	0°	15°	30°	0°	15°	30°
78	4000	2700	2400	2500	1400	1100
75	3600	2500	2300	2100	1250	1040
72	3200	2300	2200	1800	1150	990
70	2900	2200	2100	1700	1100	950
65	2400	2000	1900	1400	950	880
60	1850	1800	1700	1200	880	830
55	1250	1200	1100	900	800	780
50	850	800	700	610	550	500
吊钩重量	100kg (4吨用)					

注: 公司保留随技术改进而修改技术参数及部件的权利

All specifications are subject to technical modifications without notice

性能表使用说明:

◆ 表中所列起重重量是在平整坚固的地面上本机所能保证的最大起重重量;

◆ 由于性能表是阶梯形的有级数值, 所以, 当实际工作幅度处于表中两个数值之间时, 应选择最接近的较大幅度值所对应的起重重量;

◆ 起重臂的伸缩方式为顺序加同步的伸缩方式, 即伸臂时必须全伸二节臂后再伸三四节臂, 缩臂时将三四五全缩后再缩二节臂;

◆ 表中所列额定起重重量包括吊钩和吊具的重量, 表中的工作幅度是包括吊臂的变形量在内的实际值;

◆ 主臂起重性能表中所列参数是指不带副臂时的额定起重重量, 当主臂臂头装有副臂时, 主臂的额定起重重量根据实际情况, 应减去 2000kg;

◆ 臂端滑轮的起重性能同主臂的性能, 但最大起重重量不得超过 4 吨。

Notes to the tables:

◆ The data given in the tables are the maximum lifting capacity when the crane is set up on level and firm ground.

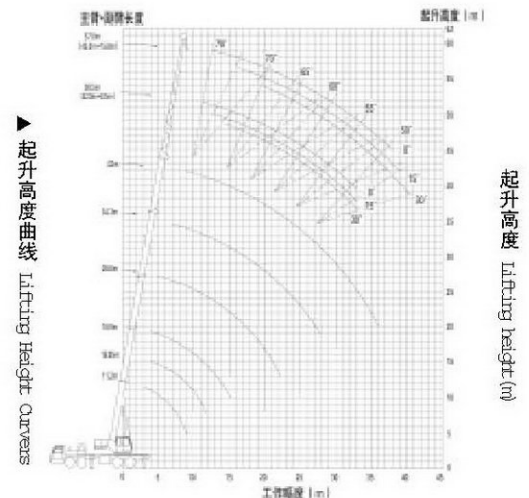
◆ The data given in the tables are the step type values. When the actual working radius is between two values, the nearest larger value should be selected acc. to the rated lifting load.

◆ The boom telescoping is sequence plus synchronous. When extending boom, first extend fully the 2nd boom section, then the 3rd, 4th and 5th boom sections. When retracting boom, first retract fully the 3rd, 4th and 5th boom sections, then the 2nd boom section.

◆ The total rated lifting loads in the table include the weight of hook block and slings, and the working radii in the table are the actual values including the deflection of boom under load.

◆ The total rated lifting load for boom is based on boom tip not attached with jib, if with jib, the lifting load should be deducted 2000kg.

◆ The total rated lifting load for single top (auxiliary boom sheave) are the same as those for main boom, but the max. lifting load must not exceed 4t.



起升高度曲线  
Lifting Height Curves

起升高度  
Lifting height (m)