

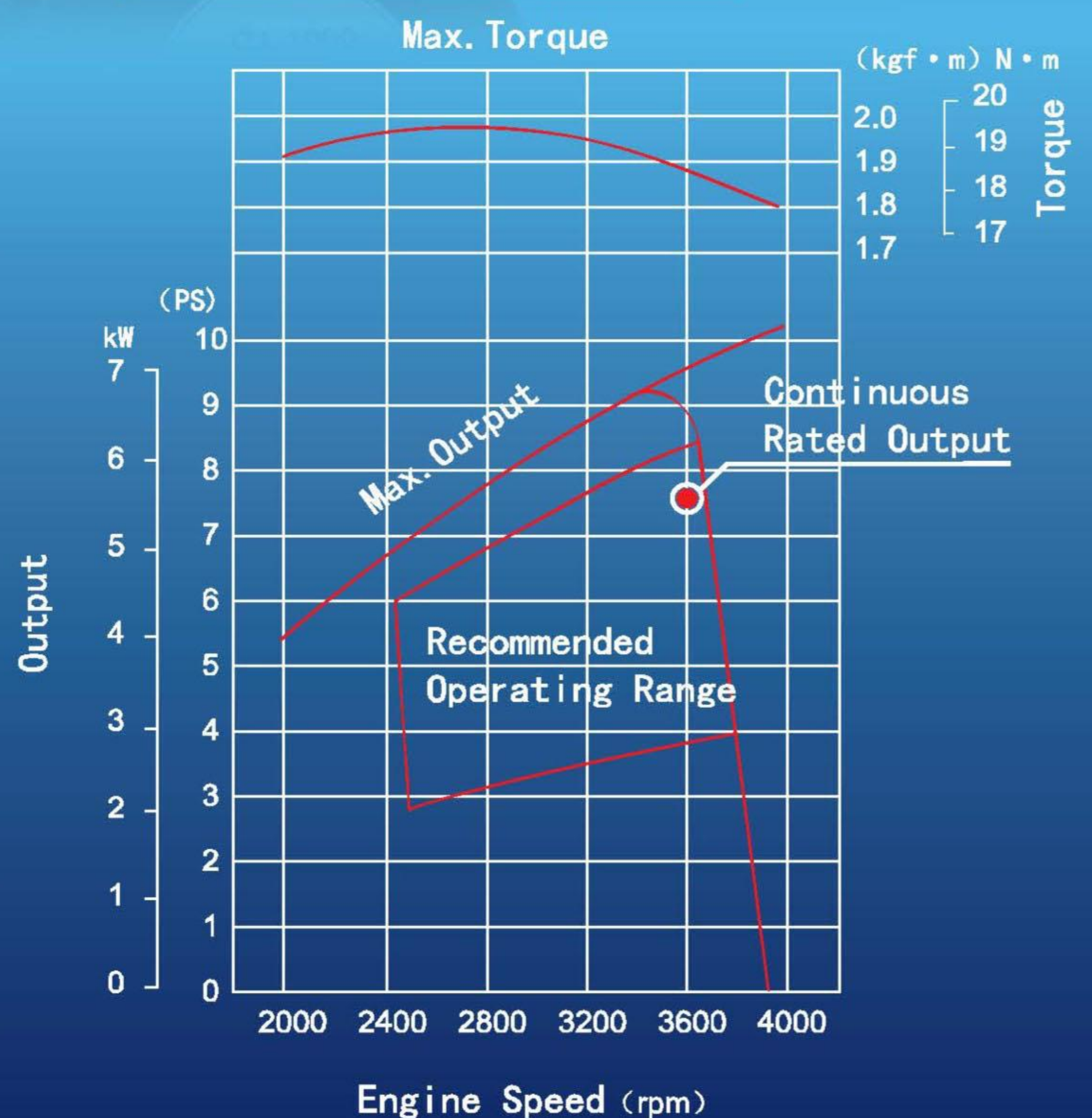
GT1000



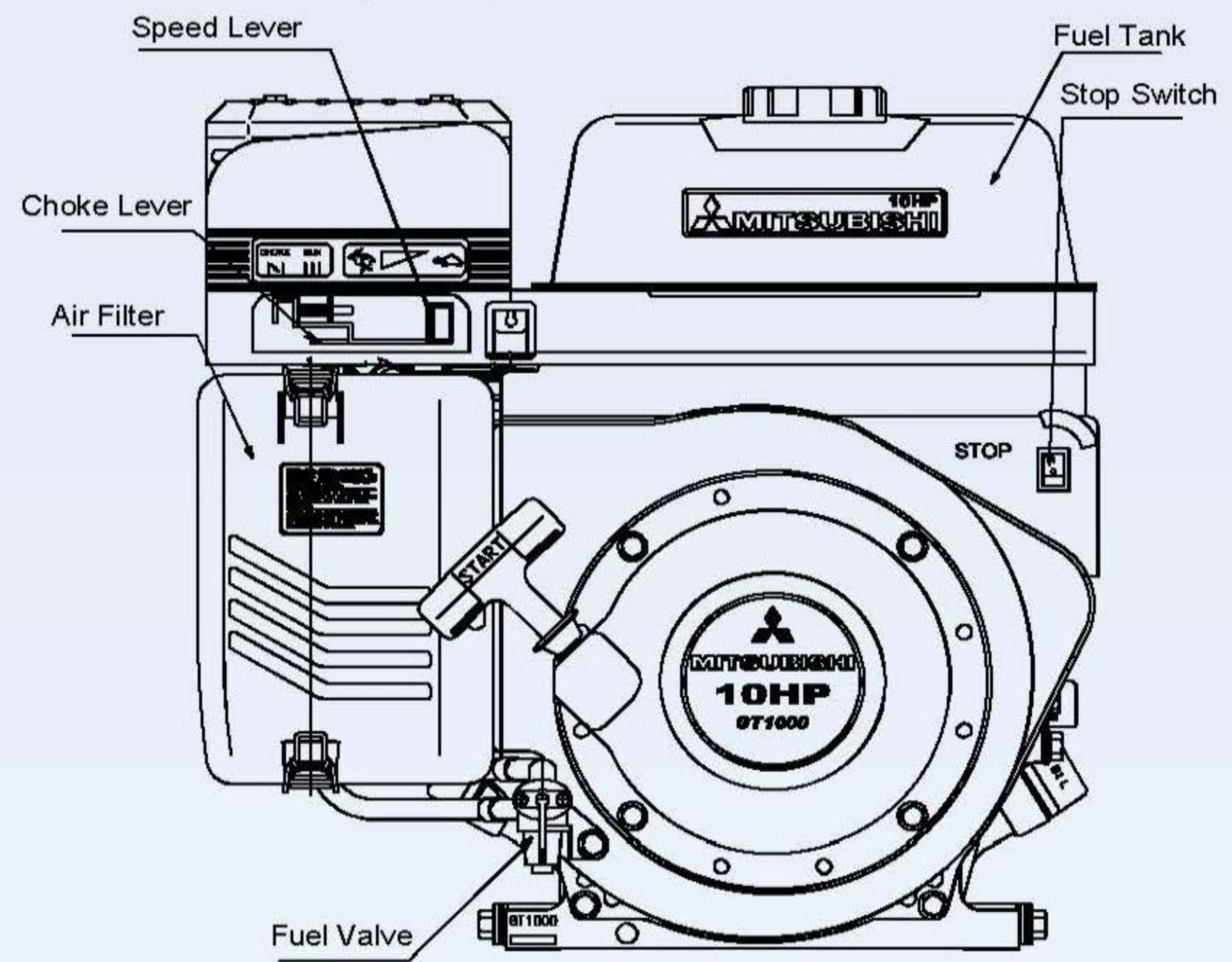
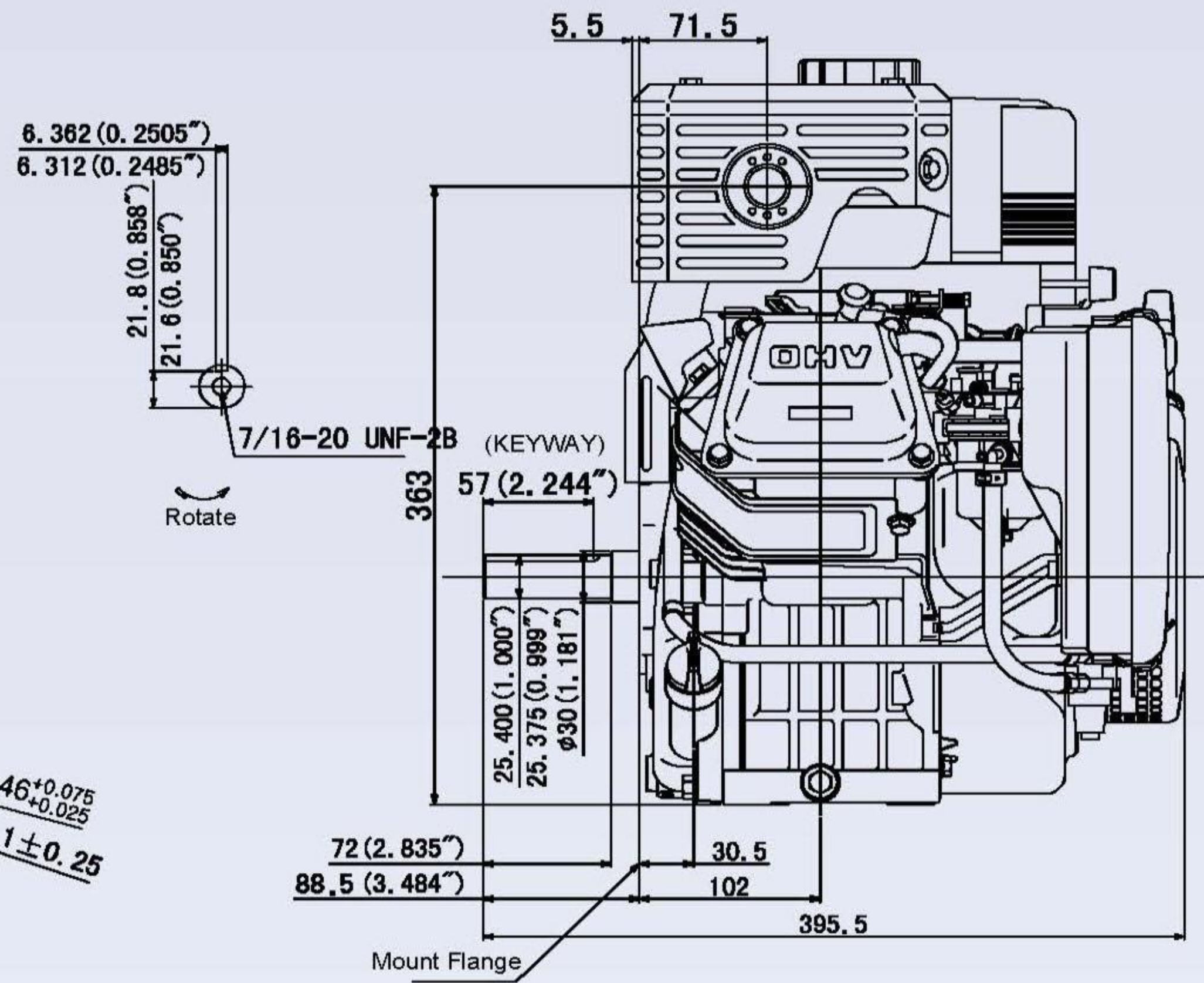
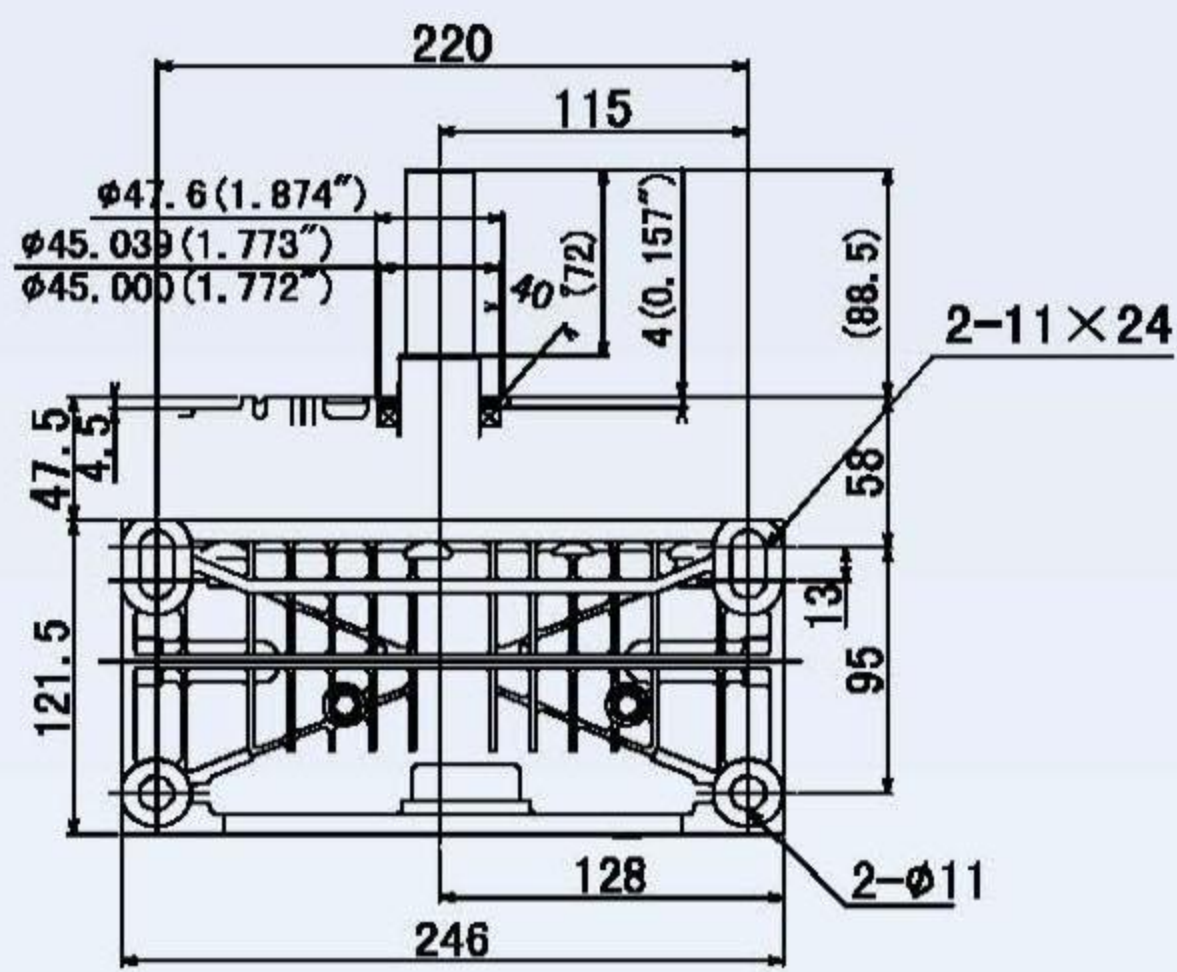
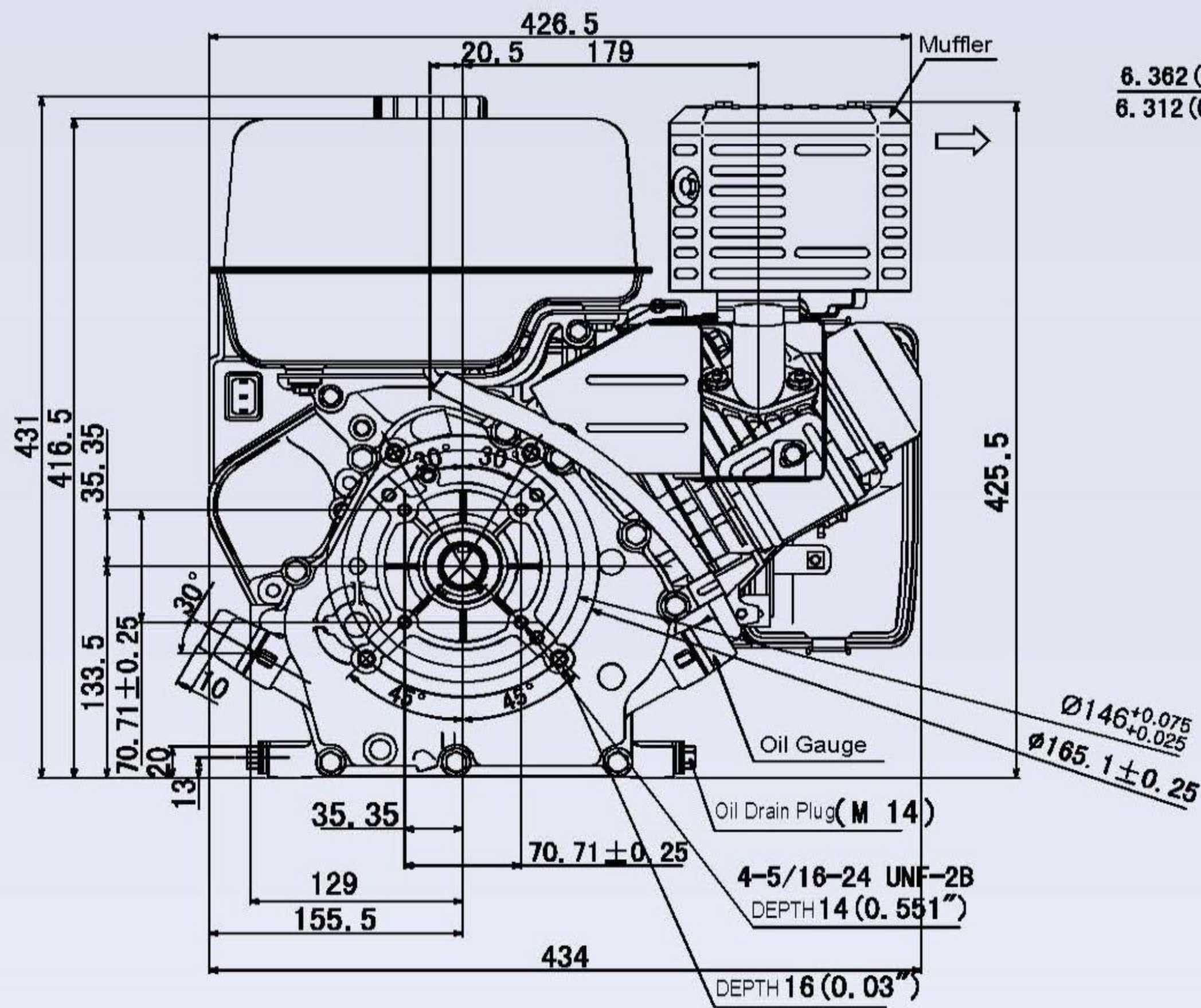
SPECIFICATION

ITEM	GT1000
Type	OHV, 4 Stroke, Air cooled
Bore×Stroke	80×59 mm
Displacement	296 cm ³
Continuous Rated Output	5.5/3600 kW/rpm <7.5/3600PS/rpm>
Maximum Output	7.4 kW <10.0 PS>
Maximum Torque	19.3/2800 N·m/rpm <1.97/2800 kgf·m/rpm>
Fuel	Unleaded Automobile Gasoline
Fuel Tank Capacity	6.0 L
Lubricating Oil	Engine Oil SD Class or Higher
Lubricating Oil Capacity	1.2 L
Starting System	Manul Starter [or Electric Starter]
Ignition System	Breakerless Ignition Type
Air Cleaner	Polyurethane Type [or Oil Bath type]
Governor System	All Speed Mechanical Governor
PTO Shaft Rotation	Counter-Clockwise [facing PTO]
Weight	27 kilograms
Dimensions	L: 395.5 mm W: 426.5 mm H: 431 mm

PERFORMANCE CURVE



DIMENSIONS



PTO SHAFT TYPE

GT1000	JIS (with JIS Mount Flange)	SAE (with SAE Mount Flange)
KEYWAY (General)	<p>JIS Keyway shaft diagram showing dimensions: 63 (total length), 46 (length to keyway), 7H9^{+0.008}/₀ (keyway), M8x1.25 DEPTH 15 (thread), $\phi 25h7_{-0.021}$ (shaft diameter), and $\phi 100(3.94")$ B.C. Mount Flange.</p>	<p>SAE Keyway shaft diagram showing dimensions: 93(3.661") (total length), 72(2.835") (length to keyway), 57(2.244") (length to keyway), 8.362(.2505") (keyway), 6.312(.2485") (keyway), 21.8(.858") (keyway), 21.6(.850") (keyway), 7/16-24UNF-2B (thread), 25 (keyway depth), $\phi 26.95(1.179")$ (shaft diameter), $\phi 26.90(1.177")$ (shaft diameter), and $\phi 185.1(8.5")$ B.C. Mount Flange.</p>
PUMP	<p>JIS Pump shaft diagram showing dimensions: 80 (total length), 59.7 ± 0.4 (length to thread), 20.3 (length to thread), M20x1.5 (thread), $\phi 25h7_{-0.021}$ (shaft diameter), and $\phi 100(3.94")$ B.C. Mount Flange.</p>	<p>SAE Pump shaft diagram showing dimensions: 93(3.661") (total length), 72(2.835") (length to thread), 25 (.88") (length to thread), 1-14UNS-2A (thread), $\phi 25.40(1.000")$ (shaft diameter), $\phi 25.375(0.999")$ (shaft diameter), $\phi 29.95(1.179")$ (shaft diameter), $\phi 29.90(1.177")$ (shaft diameter), and $\phi 185.1(8.5")$ B.C. Mount Flange.</p>
TAPER (Generator)	<p>JIS Taper shaft diagram showing dimensions: 49.5 (total length), 46 (length to thread), 35 (length to thread), M10x1.5 DEPTH 20 (thread), TAPER 1/10 (taper), $\phi 22.5^{+0.010}/_{-0}$ (shaft diameter), $\phi 26$ (shaft diameter), and $\phi 100(3.94")$ B.C. Mount Flange.</p>	<p>SAE Taper shaft diagram showing dimensions: 110.6(4.354") (total length), 87.4(3.835") (length to thread), 35.6(1.402") (length to thread), 22.16(.872") (length to thread), 22.14(.871") (length to thread), 19.05 (.75") (length to thread), 7/16-24UNF-2B DEPTH 15 TAPER 2 1/4" (thread), $\phi 29.95(1.179")$ (shaft diameter), $\phi 29.90(1.177")$ (shaft diameter), and $\phi 185.1(8.5")$ B.C. Mount Flange.</p>