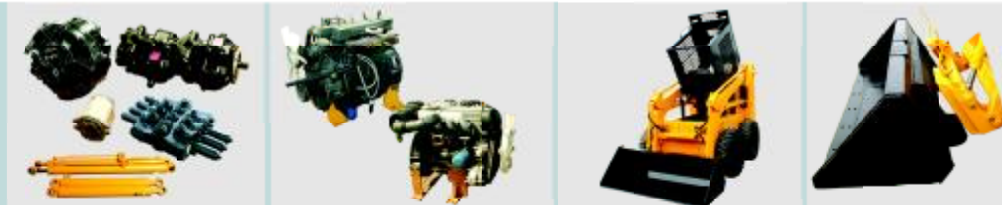




Skid Steer Loader
» **JC100**



进口液压件
Hydraulic system from abroad

道依茨、珀金斯、康明斯发动机 易于维护Rops/Fops驾驶室设计
Deutz, perkins Cummins brand diesel engine Rops/Fops CAB IN WITH EASY MAINTENANCE DESIGN

快换装置
Standard quick hitch

Main features of JC100

- Compact structure, maneuverable movement suitable for narrow space operation
- Close cabin with joystick control system
- Gear type transmission
- Double accelerograph control
- Multi-function with a wide range of attachments
- Hydraulic brake

Specifications

额定载重	Rated Operating Capacity	1200
倾翻载荷	Tipping load(Kg)	2400
铲斗容量	Bucket Capacity(m ³)	0.4-0.5
提升力	Lifting Force(Kg)	2200
工作流量	Hydraulic Pump Flow(L/min)	80
功率	Engine power(HP)	100
机重	Weight(Kg)	3800
速度	Max.Travel Speed(km/h)	12/18
最大爬坡	Grade ability(°)	20
轮胎规格	Tire	12-16.5
燃油、液压油容量	Fuel/hyd.oil capacity(L)	80/80

Dimensions

最大操作高度	A.Height at Maximum Extension	3780mm
铰接销高度	B.Hinge Pin Height	3150mm
总高度	C.Total Height	2040mm
带斗总长度	D.Length with Bucket	3450mm
无斗长度	E.Length without Bucket	2540mm
带斗宽度	F.Width with Bucket	1900mm
轮距	G.Track Width	1560mm
轴距	H.Wheelbase	1020mm
离地高度	J.Ground Clearance	260mm
倾倒角	K.Dumping Angle	45°
倾倒高度	L.Dumping Height	2400mm
倾倒前伸	M.Maximum Reach	700mm

Dimensional Drawings

