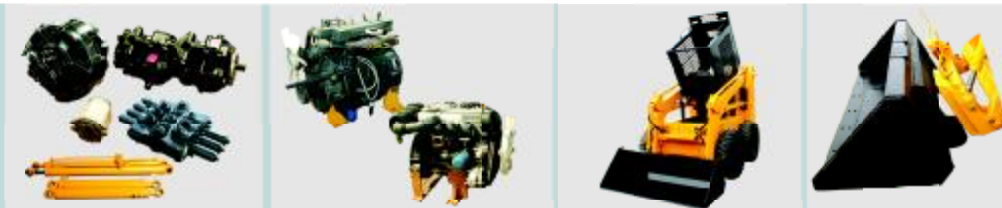




Skid Steer Loader  
» **JC45**



进口液压件  
Hydraulic system from abroad

道依茨、珀金斯、现代发动机  
Deutz, perkins hyundai brand diesel engine

易于维护Rops/Fops驾驶室设计  
Rops/Fops CAB IN WITH EASY MAINTENANCE DESIGN

快换装置  
Standard quick hitch

**Main features of JC45**

- Compact structure, maneuverable movement suitable for narrow space operation
- Open cabin with mechanical control system
- Double accelerograph control
- Multi-function with a wide range of attachments
- Hydraulic brake

**Specifications**

额定载重	Rated Operating Capacity	700
倾翻载荷	Tipping load(Kg)	1400
铲斗容量	Bucket Capacity(m <sup>3</sup> )	0.36-0.45
工作流量	Hydraulic Pump Flow(L/min)	62.5
功率	Engine power(HP)	50
机重	Weight(Kg)	2750
速度	Max.Travel Speed (km/h)	12
最大爬坡	Grade ability(° )	20
轮胎规格	Tire	10-16.5
燃油、液压油容量	Fuel/hyd.oil capacity(L)	50/50

**Dimensions**

最大操作高度	A.Height at Maximum Extension	3670mm
铰接销高度	B.Hinge Pin Height	2900mm
总高度	C.Total Height	2050mm
带斗总长度	D.Length with Bucket	3380mm
无斗长度	E.Length without Bucket	2450mm
带斗宽度	F.Width with Bucket	1740mm
轮距	G.Track Width	1450mm
轴距	H.Wheelbase	991mm
离地高度	J.Ground Clearance	185mm
倾倒角	K.Dumping Angle	40°
倾倒高度	L.Dumping Height	2310mm
倾倒前伸	M.Maximum Reach	710mm

**Dimensional Drawings**

