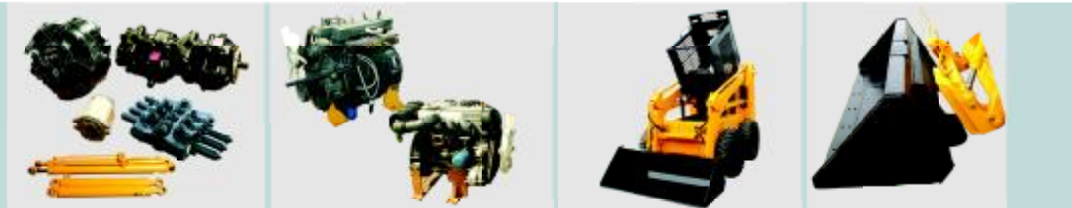




Skid Steer Loader  
» **JC50D**



进口液压件  
Hydraulic system from abroad

道依茨、珀金斯、现代发动机  
Deutz, perkins hyundai brand diesel engine

易于维护Rops/Fops驾驶室设计  
Rops/Fops CAB IN WITH EASY MAINTENANCE DESIGN

快换装置  
Standard quick hitch

**Main features of JC50D**

- Compact structure, maneuverable movement suitable for narrow space operation
- Close cabin with joystick control system
- Low profile design for special working area
- Double accelerograph control
- Multi-function with a wide range of attachments
- Hydraulic brake
- Solid tire

**Specifications**

额定载重	Rated Operating Capacity	750
倾翻载荷 Kg	Tipping load(Kg)	1500
铲斗容量	Bucket Capacity(m <sup>3</sup> )	0.3
提升力	Lifting Force(Kg)	1500
工作流量 L/min	Hydraulic Pump Flow(L/min)	75
功率	Engine power(HP)	60
机重	Weight(Kg)	2900
速度	Max.Travel Speed (km/h)	8
最大爬坡	Grade ability(° )	20
轮胎规格	Tire	28 × 9-15
燃油、液压油容量	Fuel/hyd.oil capacity(L)	75/75

**Dimensions**

最大操作高度	A.Height at Maximum Extension	3300mm
铰接销高度	B.Hinge Pin Height	2810mm
总高度	C.Total Height	1600mm
带斗总长度	D.Length with Bucket	3490mm
无斗长度	E.Length without Bucket	2900mm
带斗宽度	F.Width with Bucket	1680mm
轮距	G.Track Width	1400mm
轴距	H.Wheelbase	991mm
离地高度	J.Ground Clearance	150mm
倾倒角	K.Dumping Angle	40°
倾倒高度	L.Dumping Height	1500mm
倾倒前伸	M.Maximum Reach	1000mm

**Dimensional Drawings**

