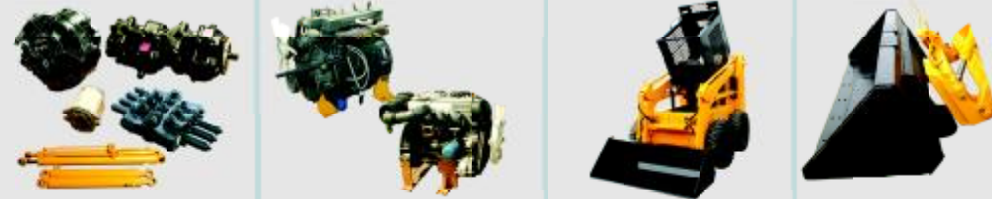




Skid Steer Loader
» **JC65**



进口液压件 Hydraulic system from abroad
道依茨、珀金斯、现代发动机 Deutz, perkins hyundai brand diesel engine
易于维护Rops/Fops驾驶室设计 Rops/Fops CAB IN WITH EASY MAINTENANCE DESIGN
快换装置 Standard quick hitch

Main features of JC65

- Compact structure, maneuverable movement suitable for narrow space operation
- Close cabin with joystick control system
- Extended wheelbase
- Double accelerograph control
- Auto-leveling system
- Multi-function with a wide range of attachments
- Hydraulic brake

Specifications

额定载重	Rated Operating Capacity	850
倾翻载荷	Tipping load(Kg)	1700
铲斗容量	Bucket Capacity(m ³)	0.4-0.5
提升力	Lifting Force(Kg)	2000
工作流量	Hydraulic Pump Flow(L/min)	75
功率	Engine power(HP)	65
机重	Weight(Kg)	3000
速度	Max.Travel Speed (km/h)	12
最大爬坡	Grade ability(°)	20
轮胎规格	Tire	12-16.5
燃油、液压油容量	Fuel/hyd.oil capacity(L)	80/80

Dimensions

最大操作高度	A.Height at Maximum Extension	3690mm
铰接销高度	B.Hinge Pin Height	2920mm
总高度	C.Total Height	2050mm
带斗总长度	D.Length with Bucket	3440mm
无斗长度	E.Length without Bucket	2780mm
带斗宽度	F.Width with Bucket	1820mm
轮距	G.Track Width	1500mm
轴距	H.Wheelbase	1085mm
离地高度	J.Ground Clearance	200mm
倾倒角	K.Dumping Angle	40°
倾倒高度	L.Dumping Height	2330mm
倾倒前伸	M.Maximum Reach	710mm

Dimensional Drawings

