

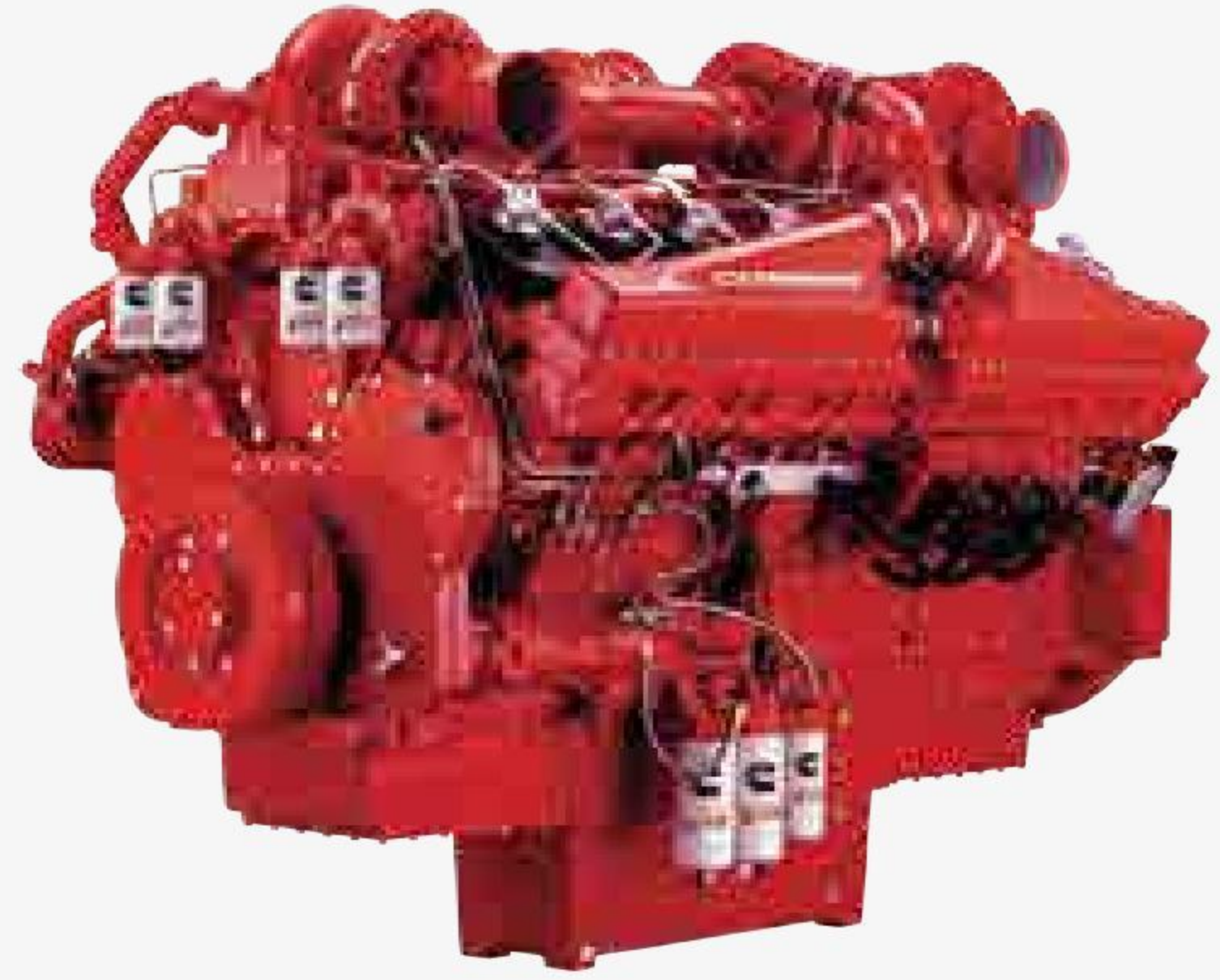


更节能环保

More energy-conservation and environmental protection

康明斯全电控发动机，双涡轮增压技术，具有先进模块化共轨燃油系统（MCRS），超高的喷射压力，动力充足，燃油经济性高，满足各种矿山施工工况；采用了LTA低温后冷却系统，保证了进气温度和发动机缸体寿命，Quantum系统监控发动机各项工作状态，延长使用寿命，降低使用成本。

Cummins full electric-controlled engine, with turbocharged technology and advanced modular common rail fuel system (MCRS) equipped, provides ultra-high injection pressure and plenty of power to improve fuel economy and meet various kinds of working conditions of mine construction. Adopt LTA low temperature after cooling system to guarantee the air intake temperature and service life of engine cylinder body. Quantum system monitors each working state of engine, which can prolong the engine's service life and reduce the use cost.



更可靠耐用

More reliable and durable

- 采用多级燃油过滤燃油系统，过滤效率高达99%，可有效过滤燃油中的杂质和水分，延长发动机寿命；多级燃油滤清器并联布置可以降低燃油进油阻力，满足发动机进油要求；配置有透明储水杯和水位报警器，可定时提醒用户进行放水操作。

Adopt multi-stage fuel filter system, the filter efficiency can reach up to 99% and it can effectively filter the impurities and moisture in fuel to prolong the engine life. Multi-stage fuel filter is arranged in parallel, which can reduce fuel inlet resistance and meet oil inlet requirements of engine. Equip transparent water cup and water level alarm to remind the user to do water drainage in regular time.

- 低温启动系统，可选装液体加热器，解决高寒地区的发动机难启动问题。Liquid heater is optional for low temperature start system to solve the problem that engine is difficult to start in ultra-cold area.



- 空气滤清器配套唐纳森公司SSG系列矿用重灰度滤清器，可有效防止粉尘进入，以适应多灰尘环境作业。

Air filter has supporting parts of Donaldson SSG series mining heavy-gray filter, which can effectively prevent dust entering so as to adapt to dusty environment operation.

- 采用国际性能最稳定的控制器，传感器等各类电气元器件，保证机器可靠安全的运行。

Adopt the controller, sensor and various kinds of electrical elements with most stable performance to guarantee the safe and reliable operation of machine.

- 液压体统采用高压过滤器，减少系统中油污，提高液压元件使用寿命。

Hydraulic system adopt high pressure filter to reduce the oil pollution in system and thus improve service life of hydraulic elements.

- 四轮一带全部为国际知名品牌，性能可靠，履带板采用加厚型整体铸造结构，提高了抗压和耐磨性能。

Four rollers and one crawler are all international famous brands with reliable performance. Track shoe adopts thicken type one piece casting structure to improve compressive property and wear resistant property.

- 满足矿山工况的重型底盘装置，大扭矩行走驱动系统，整车牵引力与同吨位产品相比提升25%以上，特别适合重载矿山环境使用。

With heavy-duty chassis equipment meeting working conditions of mine and large-torque travel driving system, the traction force of whole machine has been increased by above 25% compared with machine of same tonnage, which is especially suitable for heavy-duty mine environment.

- 满足矿山的重载型工作装置，关键部位采用高强度耐磨铸钢和特殊的高强度钢材，重载销轴采用全封闭浮动式销轴及自动润滑系统，满足矿山苛刻环境，标配的重载型铲斗配置世界知名公司的合金铸造耐磨岩石型斗齿系统，穿透力强，耐磨性好，更换便捷。

With heavy-duty working device meeting working conditions of mine, key parts adopting high-strength wear-resistant casting steel and special high-strength steel and pins adopting full closed floating type pins and automatic lubrication system, it can meet harsh mine environment. Standard heavy-duty bucket is configured with world famous alloy casting wear-resistant rock teeth system, providing strong penetration, good wear-resistant and quick change.



更高效回报 More efficient return

- 德国制造液压元件和可靠的电控正流量系统，延长了整车使用寿命，提升了工作效率。

By adopting German-made hydraulic elements and reliable electronic control positive flow system, the service life of whole machine can be prolonged and working efficiency will be improved.

- 具有先进阀外的再生、合流系统，使其具有更大的再生流量、合流流量，极大地降低了能耗，提高了能源利用率。

With advanced out-of-valve regeneration and confluence system, the generation flow and confluence flow is larger, which has greatly reduced the energy consumption and improved energy utilization.

- 先进独立温控散热系统，可以根据油温自动控制风量，节能降噪，进口管带式散热提高了散热效率。

Advanced independent temperature control cooling system can automatically control air volume according to oil temperature, save energy and reduce noise. Imported corrugated tube type cooling will improve the cooling efficiency.

- 先进的液压底盘张紧系统，极大地降低行走时矿区路面的冲击，提高操作舒适性，延长整机结构件寿命。

Advanced hydraulic chassis tension system can greatly reduce the impact on road surface of mine area during travel, improve operation comfort and prolong service life of structural parts of whole machine.

- 独立闭式回转系统，保证回转卸荷工况的卸荷高度，同时回收回转制动能量，为您节省更多的能耗。

Independent closed type rotating system can guarantee the unloading height on unloading conditions of rotating and meanwhile withdraw rotating brake energy to save more energy consumption.



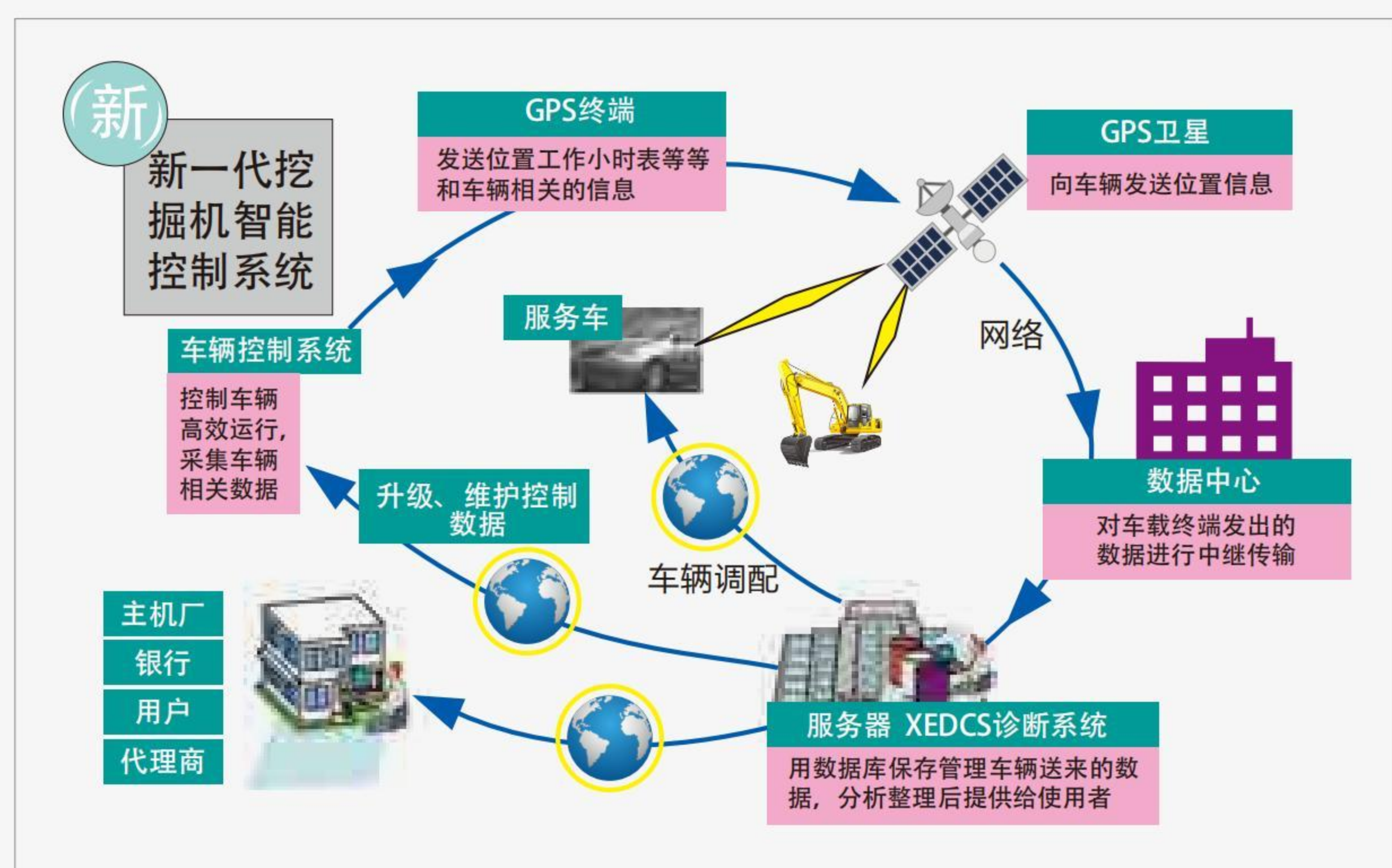
更智能管控

More intelligent management and control

- 采用全新自主开发的智能控制系统（XEICS），实现了动力系统与液压系统功率的精确匹配，工作更加高效节能。
Adopt brand new intelligent control system developed independently to achieve accurate power match between power system and hydraulic system, the work is more efficient and energy efficient.

- 徐工挖机GPS智能云控制系统，与公司CRM、400、DMS系统链接，集GPS定位功能、远程管理和远程诊断功能。能够承载挖掘机地理位置信息，挖机现场工作参数和报警信息数据上传，实现车辆出入库管理、远程管理、远程诊断、远程控制。

XCMG Excavator GPS intelligent cloud control system, which is linked with company's CRM, 400 and DMS system, integrates GPS positioning function, remote management and remote diagnosis function into one. With information about excavator's location, working parameters of excavator on site and alarm information uploading, entry and out warehouse management, remote management, remote diagnosis and remote control can be achieved.



- 设备关键系统配置了多种信号采集设备，实时检测设备，对工况进行监控，出现异常时会发出报警，便于故障诊断和远程监测。
Key system of equipment is configured with various kinds of signal acquisition devices to test the equipment in real time and monitor the working conditions, and if there is something abnormal, it will send out alarm, which is convenient for fault diagnosis and remote monitoring.

更舒适安全

More comfortable and safe

- 配备超大型、全视野、双座椅，具有FOPS功能的安全可靠的专用驾驶室，操作布局合理、可靠、布局紧凑，节省空间，全自动、大功率的冷暖空调系统；多点支撑的减震器能有效的减震降噪，可为驾驶员提供舒适、宽敞的工作环境，降低驾驶员的操作疲劳。

Special cab featured with ultra large space, full field of view, double seats and FOPS function is safe and reliable. Operation arrangement is reasonable and reliable. Compact layout can save much space. Cooling and heating air conditioning system with large power is fully automatic. Shock absorber with multipoint supporting can effectively reduce vibration and noise, providing operator with comfortable and capacious working environment and lower the operation fatigue of operators.

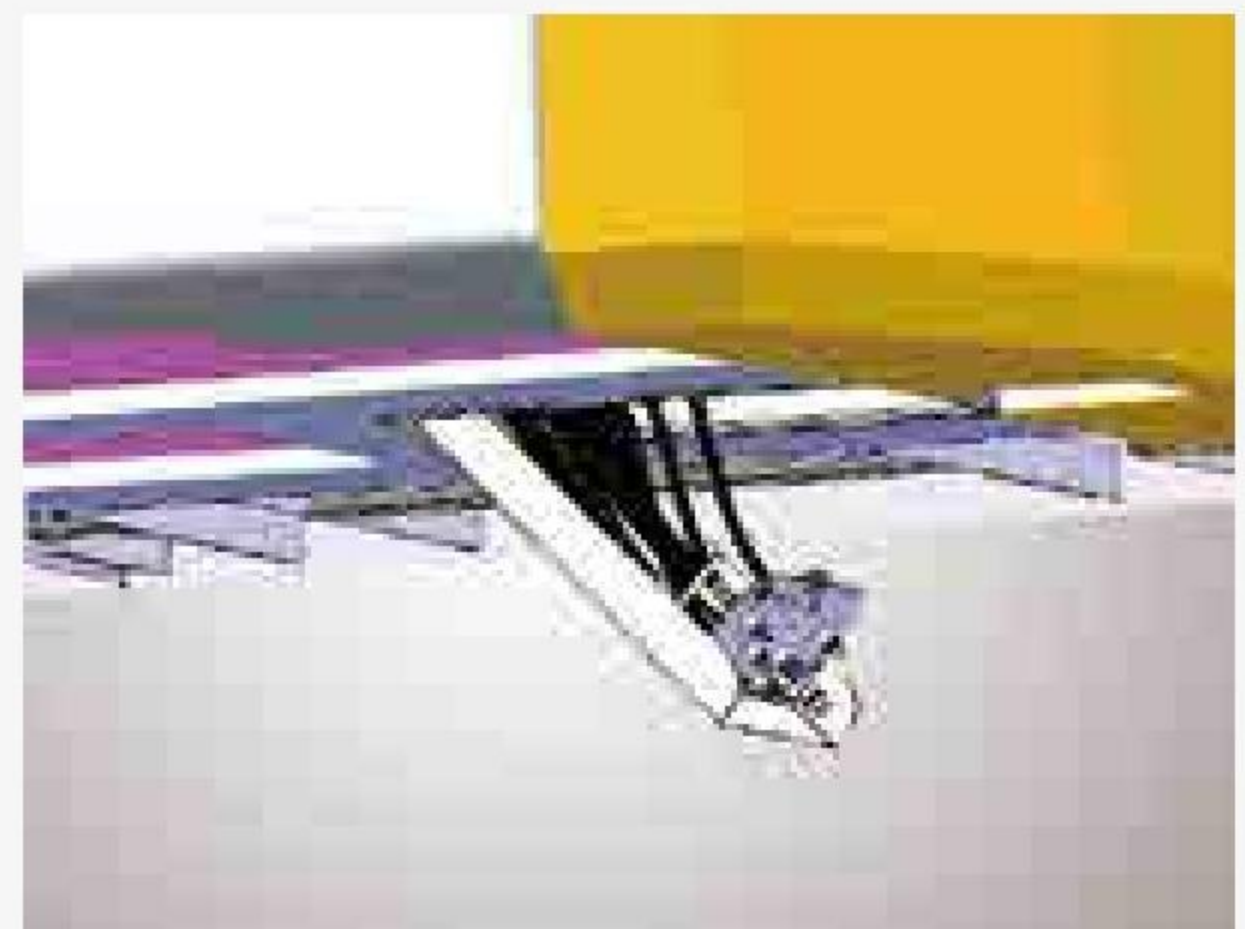
- 大屏幕显示器，多点视频监控，消除视野盲区，施工更加安全。
Large screen display and multipoint video monitor can eliminate blind area and make the construction safer.
- 采用集中灭火技术，动力舱、泵室、主阀室等全方位保护，保证使用安全。
Adopt centralized extinguish technology to protect the power compartment, pump room and main valve room in full directions, which can thus guarantee the safe operation.

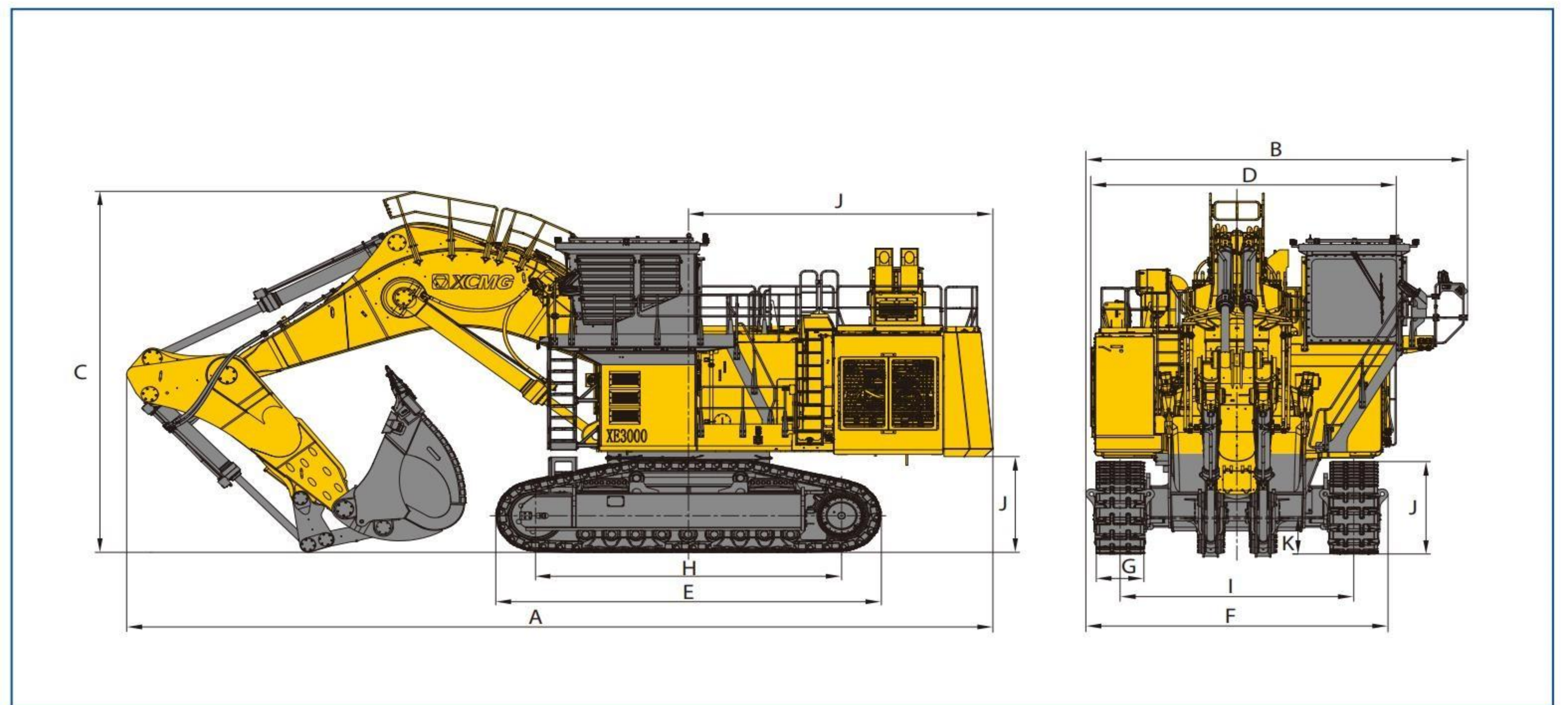
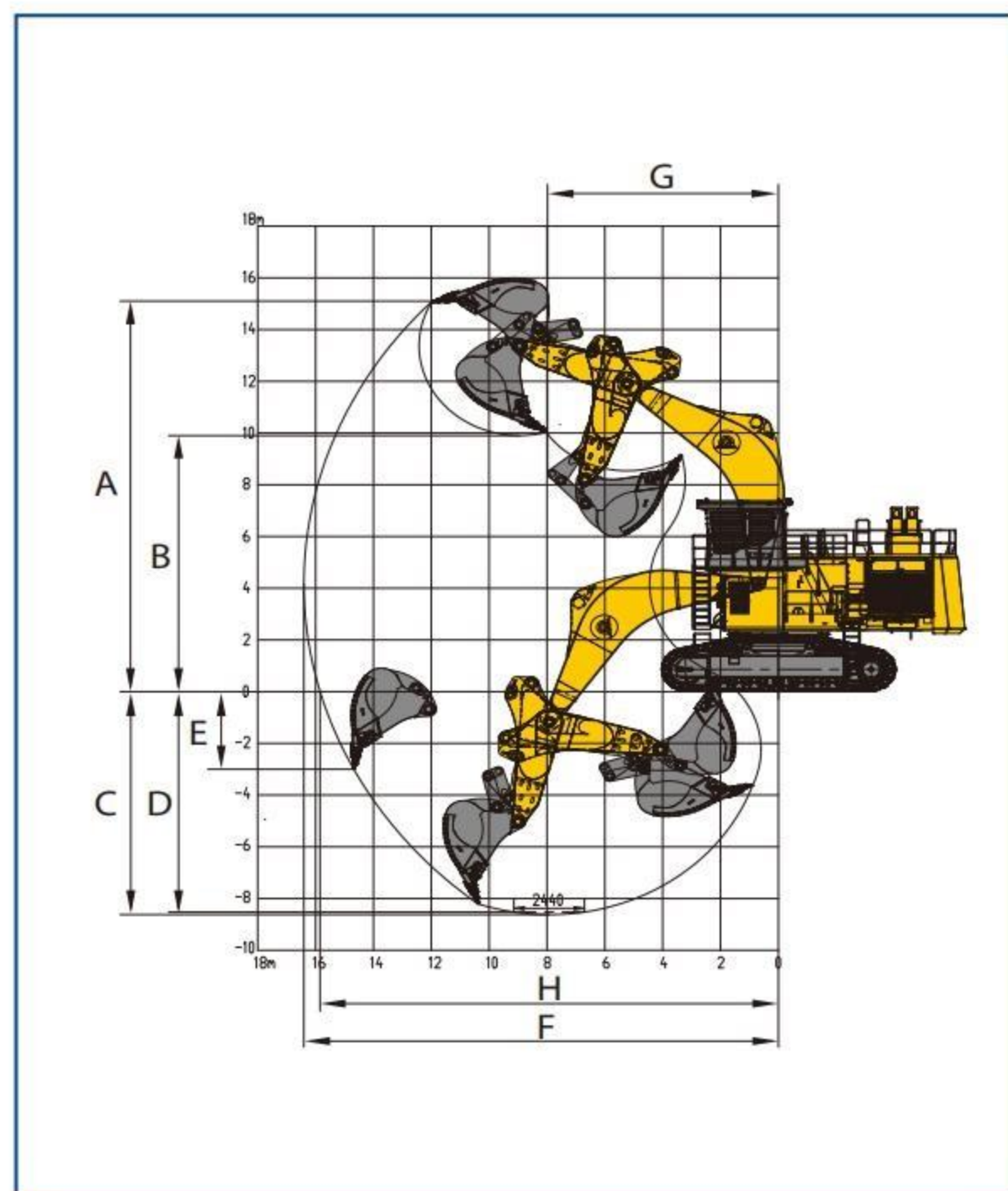


便捷的维护保养

Convenient repair and maintenance

- 各部件之间均有通道相连，维护保养触手可及。
There are all channels between each part, which makes the maintenance within reach.
- 整机采用全自动单线式集中润滑系统，能精确控制每个润滑点的润滑脂量和润滑间隔，确保有效润滑。
The whole machine adopts full automatic single-line centralized lubrication system to control grease amount and lubrication interval of each lubrication point accurately and ensure effective lubrication.
- 采用集中加注系统，实现了整车的地面集中保养，提升保养效率，降低保养劳动强度。
Adopt centralized refilling system to achieve centralized maintenance of whole machine on ground, improve the maintenance efficiency and reduce maintenance labor intensity.





主要参数/Main Specifications

型号 Model	单位 Unit	参数 Parameters
----------	---------	---------------

操作重量 Operation Weight	kg	290000
铲斗容量 Bucket Capacity	m ³	15

发动机 Engine

发动机型号 Model	/	QSK50
电喷 Electronic fuel injection	/	√
4冲程 Four strokes	/	√
水冷 Water cooling	/	√
涡轮增压 Turbo-charging	/	√
空空中冷 Air to air intercooler	/	√
缸数 No. of cylinders	/	16
额定输出功率/转速 Output power	kW/rpm	1193/1800
最大扭矩/转速 Torque/speed	N.m/rpm	6835/1500
排量 Displacement	L	50

主要性能 Main performance

行驶速度(高/低) Travel speed (H/L)	km/h	2.2/1.5
回转速度 Rotating speed	r/min	4
爬坡能力 Gradeability	°	30
接地比压 Ground pressure	kPa	208
铲斗挖掘力 Bucket digging force	kN	790
斗杆挖掘力 Arm digging force	kN	782

液压系统 Hydraulic system

主泵 Main pump	/	4个柱塞泵
主泵额定流量 Rated flow of main pump	L/min	4 × 750
主安全阀压力 Pressure of prime valve	MPa	32
行走系统压力 Pressure of travel system	MPa	32
回转系统压力 Pressure of swing system	MPa	35
先导系统压力 Pressure of pilot system	MPa	6

油类容量 Oil capacity

燃油箱容量 Fuel tank capacity	L	5700
液压油箱容量 Hydraulic tank capacity	L	2500
发动机油容量 Engine oil capacity	L	260

型号 Model	单位 Unit	参数 Parameters
----------	---------	---------------

外形尺寸 Appearance size

A 总长 Overall length	mm	18170
B 总宽 Overall width	mm	8007
C 总高 Overall height	mm	8470
D 转台宽度 Width of platform	mm	6410
E 履带长度 Length of crawler	mm	8108
F 底盘总宽 Overall width of chassis	mm	5900
G 标准履带板宽度 Width of crawler	mm	1000
H 履带轴距 Track length on ground	mm	6420
I 轨距 Crawler gauge	mm	4900
J 配重离地间隙 Clearance under counterweight	mm	2247
K 最低离地间隙 Min. ground clearance	mm	827
L 尾部回转半径 Min. tail swing radius	mm	6640
M 履带高度 Height of crawler	mm	2165

工作范围 Working scope

A 最大挖掘高度 Max. digging height	mm	15100
B 最大卸载高度 Max. dumping height	mm	9900
C 最大挖掘深度 Max. digging depth	mm	8630
D 8英尺水平面挖掘深度 8-inch horizontal plane digging depth	mm	8520
E 最大垂直挖掘深度 Max. vertical wall digging depth	mm	3000
F 最大挖掘半径 Max. digging reach	mm	16400
G 最小回转半径 Min. swing radius	mm	7980

标配 Standard

动臂长度 Length of boom	mm	9000
斗杆长度 Length of arm	mm	4000
铲斗斗容 Bucket capacity	m ³	15

材料和规格可随时改变，恕不另行通知
Materials and specifications may be changed at any time without prior notice