

ATLAS

2006LC

ATLAS Tracked Hydraulic Excavator

- 性能先进、技术独特
Advanced Performance、Unique Technology
- 功率大、油耗小
High Power、Low Fuel Consumption
- 作业效率高、使用成本低
High Working Efficiency、Low Operation Cost



强劲的动力配置 创造最佳的作业效率

Highest Power Configuration Highest Working Efficiency

完美体现油耗省、噪音低、寿命长

Realize Low Fuel Consumption, Low Noise and Long Life

先进、节油、超强动力打造高效利润

Perfectly Realize Low Fuel Consumption, Low Noise and Long Life

装备德国原装道依茨大功率直列4缸发动机，有超强的 高压喷油系统，具有 高可靠性、最佳经济性、环保性；发动机的喷油嘴以精细控制使燃油燃烧最大化。极具吸引力的燃油经济性、低噪水平、更有效的散热效果、多级空气过滤系统、使发动机工作寿命更长。发动机输出功率和发动机转速由电控系统控制，排放达到欧洲II号标准。性能卓越，保证产品平均使用寿命更长，更能承受了恶劣工况的考验！

ATLAS excavator is equipped with Germany original Deutz engine with four in-line cylinder and super high pressure fuel injection system, it has the features of high stability, optimal economy and environmental protection; the maximal fuel-burning is obtained by precision control for engine oil nozzle; the engine life is prolonged because it has the advantages of fuel economy, low noise, efficient heat dissipation and multistage-air filtration system working. The output power and rotating speed of engine are controlled by electronic controlled system and the engine emission conforms to Euro Standard II. The Excellent performance ensures average operation life longer and can stand the trials from the bad working conditions.



先进的喷油系统保证了柴油机的低排放和低耗油

Advanced fuel injection system ensures low emission and low fuel consumption for diesel.

高压喷油系统

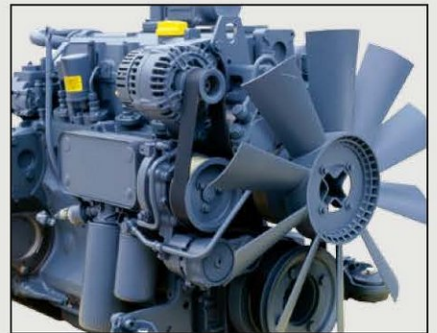
喷油压力1100-1600bar

单体泵由柴油机凸轮轴直接驱动

High pressure fuel injection system

Fuel injection pressure 1100-1600 bar

Single pump is directly driven by camshaft.



2006LC

Low Noise 、 Long Useful Time

发动机低噪音设计有效降低工作噪音

Low noise design of engine can efficiently reduce the working noise

先进的发动机低噪音设计和专用的消音器，有效地降低了发动机工作噪音！

Advanced Low noise design of engine and special muffler can efficiently reduce the engine working noise.



www.wme.cn

多级空气过滤系统降低发动机磨损

Multilevel air filtration system decreases abrasion for engine.

多级空气过滤系统，最大限度地提高粉尘的过滤精度，延长发动机的使用寿命。

Multistage air filtration system furthest improves the dust filtration precision and prolongs the life of engine.



卓越性能源于领先世界的液压控制技术

Outstanding Performance is due to the First-class Hydraulic Control Technology

—— 阿特拉斯（ATLAS）最大限度地提升系统性能

ATLAS upgrades the



- 负荷传感变量泵通过与之相匹配的负荷传感控制阀组，连续不断地向系统各执行机构提供所需的流量，大幅提高系统效率，减少液压系统发热。
- 可同时进行多种复合动作。各执行元件的运转互不干扰。
- 流量控制精度高，不受外载负荷变化的影响。

Load sensing variable pump continuously supplies the required flow for all the actuators of system through the load sensing valve block and increases efficiency of the system and decreases the heating up of hydraulic system .

Many kinds of compound actions can be done at the same time and the actions of all the actuators don' t interference each other.

High precision of flow control is not influenced by outside variable load.

2006LC

performance of system at its most

阿特拉斯(ATLAS)液压挖掘机采用全新林德液压泵提高30%的效率

- 噪音优化设计,削减压力脉动70%
- 结构紧凑,高功率密度比
- 响应速度快
- 斜盘最大摆角可达21°
- 精确灵敏的控制机构
- 集成有高压溢流阀和补油阀

ATLAS hydraulic excavator adopts fire-new Linde hydraulic pump, which can improved efficiency by 30%

Noise optimization design lowers pressure pulsation by 70%

Compact structure, high power density ratio

Fast response speed

The largest swing angle of helical plate(axial plunger motor) reaches to 21 degrees

Precise and sensitive control mechanism

Integrated with High pressure overflow valve and oil compensation valve



低噪音、高精度的全新液压泵

- 带降噪储能器的高压轴向柱塞泵具有广谱降噪功能;
- 抑制泵在整个工作区域的流量脉动;
- 有效的抑制液压系统的噪音

Fire-new hydraulic pump with Low noise and high precision

High pressure axial plunger pump with fuel accumulator can reduce noise

Restrain the flow pulsation of pump within its working area

Efficiently control the noise of hydraulic system



复合传感阀组---多个执行元件同时动作且互不干扰

闭芯负荷传感流量阀与负荷传感泵一起使用,滑阀式设计,内含压力补偿阀、补油阀和溢流阀,液压先导控制,具有压力补偿功能,输出流量与负载压力无关。可控制多个执行元件同时动作且互不干扰。甚至当泵输出的最大流量达不到系统需要时,各执行元件之间运动速度的比例关系也不会改变。该阀是专为同步控制系统设计的,它和负荷传感变量泵构成同步控制系统的核心。

Compound Sensing valve block - various actuators act at the same time without interference each other

Closed-core load sensing flowing valve and load sensing pump act together; slide-valve type design, embedded with pressure compensation valve, oil compensation valve and overflowing valve; hydraulic pilot control, with a function of pressure compensation; the output flow is not relevant to load pressure; various actuators can act together without interference; even if the max. output flow of pump can not meet the system demand, action speed ratio of various actuators will not be changed; this valve is specially designed for simultaneous control system, which consist of the core for simultaneous control system with load sensing variable pump together.



回转马达

- 斜盘低速大排量液压马达
- 多片制动器
- 高强度齿轮轴组装在长寿命自润滑轴承内,输出端可提供多种齿型。
- 液压马达、齿轮箱和制动器共用润滑系统。

Slewing motor

Helical plate and low speed large displacement hydraulic motor

Multi-disc brake

High intensity gear shaft is equipped into the self lubricate bearing and the output end can supply various types of gear.

Hydraulic motor, gear box and brake share the lubricate system together



精密的电控系统

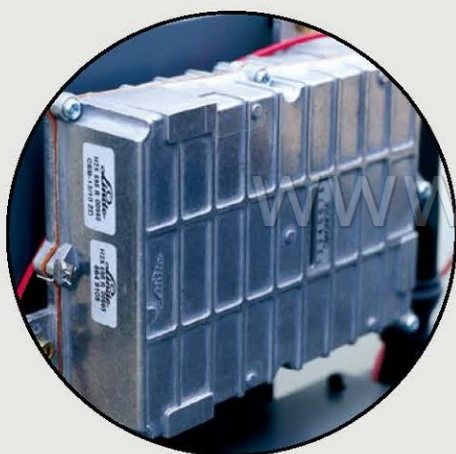
Precise Electronic Controlled System

—— 先进的林德电控箱为您的机器提供更多功能

Advanced Linde electron

阿特拉斯（ATLAS）公司采用的AWE6新型控制系统，它将对发动机、液压泵、控制阀、执行元件以及故障诊断进行综合控制和管理。负荷传感变量泵与闭芯式负荷传感阀匹配，连续传感，泵仅向系统提供需要的流量，无溢流损失，减少液压系统发热，达到节省动力，经济燃油。

ATLAS excavator adopts new AWE 6 control system, which will comprehensively control and manage for the engine, hydraulic pump, control valve, actuators and troubles diagnosis. The load sensing variable pump matches with the closed-core load sensing valve and senses continuously, and the pump only supply the required flowing volume to the system without overflowing loss so as to save fuel and power and prevent the heating-up of the hydraulic system.



故障诊断功能 Function of trouble diagnosis

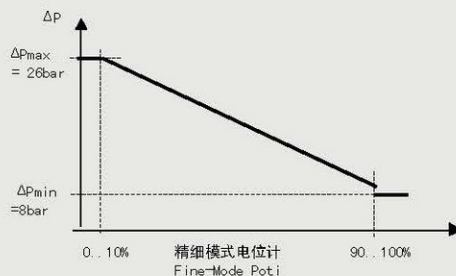
CEB-12检测的电器部分参数有：转速传感器、行驶压力传感器、电池电压不足、精密调节电位器、电子控制箱故障、极限负荷电磁阀、紧急控制系统压力开关。

故障由GLR故障指示灯指示。

The parameters for some electrical equipments are checked by CEB-12 are: rotating speed sensor, driving pressure sensor, un-sufficient driving pressure, fine adjust potentiometer, troubles of electrical controlled box, limit load electromagnetic valve, emergency control system pressure switch.

The malfunctions are indicated by GLR malfunction indicator.

精细工作模式选择 Fine working mode



挖掘机作业时的过载保护（失速补偿）

Over load protection when excavator is working (speed loss compensation)

通过电位计精确设定发动机工作转速

Precisely set the engine speed by a potentiometer

阿特拉斯（ATLAS）挖掘机配备人性化设计的操作和显示面板，可切换机器工作模式及显示机器工作状况并具有检测功能，为您工作提供更多便利。

ATLAS excavator equips with humanity-designed display and operation panel, which can display the working state and has a checking function to provide more conveniences for your work.

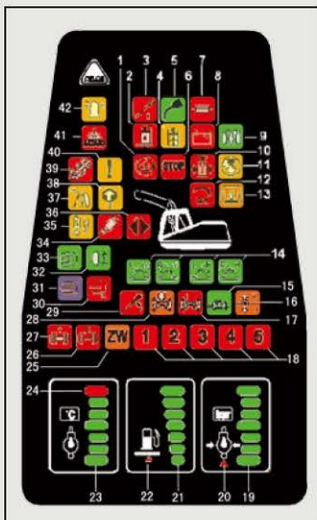
2006LC

Electronic controlled box can provide more functions for your machine

机器状况显示和检测功能 State -display and function-checking of machine

当机器出现如机油压力、冷却水水位、燃油油位、发动机水温、空气滤清器堵塞等异常时，将通过显示面板精准显示。

If the machine appears the abnormalities such as the engine oil pressure, cooling water level, fuel level, engine water temperature, and block up of air filter, they shall be indicated by display panel precisely.



- | | | |
|--|---|--|
| 1. 液压油温度
Hydraulic oil temperature | 16. 行驶方向预选
Driving direction pre-choice
V向前 forward
H向后 backward | Front wheel pressure (railway/road) |
| 2. 液压油油位
Hydraulic oil level | 17. 摆动轴
Swing shaft | 28. 摆动轴锁止
Swing shaft lock |
| 3. 发动机油油位
Engine oil level | 18. 控制灯1~5
Control light 1~5 | 29. 驻车制动
Parking brake |
| 4. 液压油滤清器
Hydraulic oil filter | 2 1 间歇式雨刷
intermittent window wiper | 30. 工作区域灯
Working area lamp |
| 5. 集中润滑
Central lubrication | 2 2 旋转限制
turning control | 31. 大灯
Headlight |
| 6. STOP | 2 3 座椅加热
seat heating | 32. 雾灯
Fog light |
| 2 冷却液过热
coolant overheating | 2 4 自动空转系统
automatic idle system | 33. 驻车灯和低射束照明灯
Parking light and beam spotlight |
| 2 液位太低
coolant level is too low | 2 5 备用 standby | 34. 液压锤
Hydraulic hammer |
| 2 发动机油压太低
engine oil pressure is too low | 19. 发动机油压力
Engine oil pressure | 35. 压力等级
Pressure level |
| 7. 保险丝监控
Fuse control | 20. 发动机油压力警告灯
Warning light of engine oil pressure | 36. 闪烁转向灯
Flash indication light |
| 8. 充电控制灯
Charge control light | 21. 燃油油位
Fuel level | 37. 升降限制
Up-down limit |
| 9. 辅助加热器
Assistant heater | 22. 燃油油位警告灯
Fuel level warning light | 38. 超载警告开启
Over load warning start |
| 10. 液压油箱增压
The pressure of hydraulic oil tank increases | 23. 冷却液温度
Coolant temperature | 39. 挖沟机
Ditcher |
| 11. 空滤器污染
Air filter contaminates | 24. 冷却液温度警告灯
Coolant temperature warning light | 40. 注意
Warn |
| 12. 极限负载控制 (GLR)
Limit load control (GLR) | 25. 铁路/公路挖掘机
Railway/Road excavator | 41. 危险警告闪烁灯
Flash light of dangerous warning |
| 13. 发动机预热
Engine preheat | 26. 后轮压力 (铁路/公路)
Rear wheel pressure (railway/road) | 42. 旋转式防撞信号灯
Rotating crashworthy signal lamp |
| 14. 支撑耳预选开关
Support ear pre-choice switch | 27. 前轮压力 (铁路/公路) | |
| 15. 行驶速度 (慢)
Driving speed (slow) | | |

体验舒适 永无止境

Endless and Comfortable Experience

超大视野、低振动、低噪音设计实现了最佳的舒适性

Optimal comfort



*照片中的显示为透过玻璃所达到的视野，故与实际作业时的视野范围有所差异

* View from the window, which is somewhat different with actual conditions.

www.wme.cn

追求安全性、确保超大范围的视野 Seek Safety and Ensure Wide View

全方位可视范围、顶棚带天窗设计，以确保开阔的视野。
All-wave view and top with skylight ensure wide view



大空间的储物箱及超音效的收录机 Spacious storage box and recorder with excellent acoustics

驾驶室安装有大空间的储物箱，及超音效的收录机方便您的工作，让您轻松享受工作的乐趣。
Spacious storage box in cab and recorder with excellent acoustics can provide convenience for your work and enjoy yourself.



驾驶室空间
Cab space
+14%

人机工程与实效作业完美结合
with actual effective operation

完全宽敞的驾驶室总成安装在阻尼气弹簧向上推进顶棚，下挡风玻璃可拆卸，同时，舒适的德国格拉默驾驶座、可调节更方便、舒适。

Wide cab assembly is assembled on damped gas springs to push the roof up, the front windshield can be disassembled; the comfortable Grammer seat can be adjusted front, back, left and right and it is very

2006LC

Comfort is realized by the design of wide-view, low vibration and noise



阿特拉斯(ATLAS)以驾驶员作业环境为设计导向,用完善、先进的科技进行人性化、多样化、个性化的设计,能够打破并分裂噪音声波,稳固的圆弧形造型设计,确保驾驶稳定,减少震动。

ATLAS excavator's design takes the working environment for the driver as the orientation, which adopts perfect and advanced technology to make the design with humanity, diversity and individuation, and it can break and split the noise wave. The steady round-arc design ensures a balanced operation and reduces vibrations.



坚固的桶形回转支持底盘 Solid barrel-shaped chassis of slewing gear ring

合典范 Ergonomic perfectly combines
tion

座上,有效降低了震动和冲击。前挡风玻璃通过
可以拆卸,门玻璃可以镶嵌在门中。

上下前后左右等6个方向调节移动、使驾驶员工

damping air spring to reduce vibration and impact
n be moved to top through gas spring, the under
door glass can be inserted in the door. At the same
n be adjusted in six directions, such as up, down,
y convenient to the operator.

阿特拉斯(ATLAS)先进的回转支承系统,具有回转加速度快的独特性能,同时具有防连接松动、减少磨损、刚性好,强度高、经久耐用、可靠等特点。

ATLAS excavator advanced slewing gear ring system has the particular feature of fast slewing acceleration. Moreover, it can prevent connection loosening, reduce the abrasion, and has excellent rigidity and intensity, long life and stability.

超低噪音设置 Super-low noise setup

独特的“平衡”技术,进行智能集成转换,有效的降低了发动机和旋转、溢流时的噪音。

Particular “balance” technology and intelligent integration transition can efficiently reduce engine noise and slewing and overflowing noises.

专业领先的设计理念创造欧美安全标准

Professional and Advanced Design Concept Creates Euro-American Safety Standards

全车使用特种钢材，达到国内先进水平。

Whole machine uses special steel materials and reaches to domestic advanced level.

强化玻璃 Intensity window

采用符合劳动卫生法的强化环保型玻璃。

Fit intensity environmental protection windows that conforms to Labor Sanitation Law



可调式销孔 Adjustable pin hole

可调式销孔更加灵活便捷。
The adjustable pin hole is more flexible.

防止落物伤害的高安全性驾驶室 Predominant cab can prevent material falling down

符合欧美劳动安全的顶部保护标准。

Conform to Euro Labor Safety Standard for Top Protection



阿特拉斯 (ATLAS) 专业、领先的安全设计理念，创造欧美安全标准
advanced and safe design concept creates Euro safety standard

ATLAS professional.

超强的结构组合件，让您使用可靠放心。加宽加长的车架为标准配置，整机更加稳定安全。

Superior structure assembled parts ensure you use safely and reliably. The widened and lengthened frame is standard configuration, and the complete machine is safer and more stable.

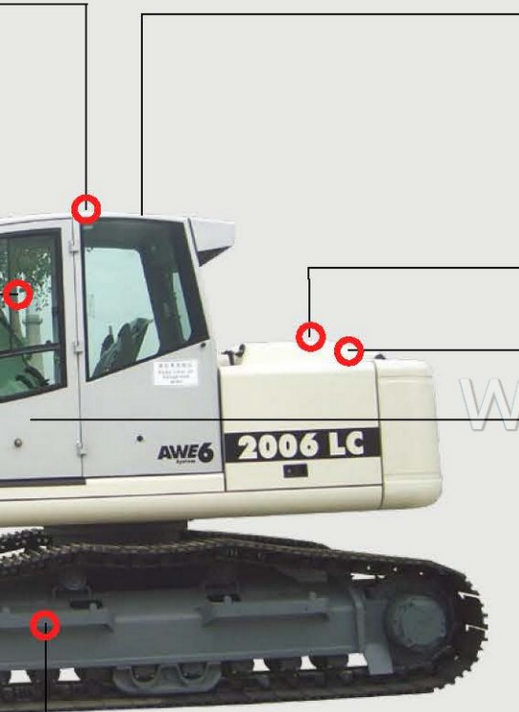


阿特拉斯 (ATLAS) 标准配置600mm履带，并加强了履带链轨，同时还带有安全的履带护轨器，有效的保护链轨。

ATLAS standard configuration of track is 600mm and the track rail is strengthened, and also equipped with safe protection devices for the track in order to protect the track.



2006LC



大型扶手 Large handrail

安装有大型扶手，以保证操作人员安全上、下机器驾驶室。

Equipped with the large handrail to ensure the operator safely get in and get off the cab.



隔热板 Heat insulation plate

为了不使手直接触到高温部位，装有隔热板。

Equipped with the heat insulation plate in order to prevent the hands directly touching the hot positions.



防油飞溅的防护隔板 Oil splash guard

防油飞溅壁在泵室和发动机之间有隔板，万一液压系统件破损，也不会有油喷到发动机高温处。

There is a guard plate between the pump housing and engine. In case the hydraulic system parts break, oil can not be splashed on the hot positions of engine.



安全锁杆 Security locking rod

防止误操作，将工作装置和回转平台锁紧，另外，采用了只有在液压锁紧状态下，才能启动发动机的空档启动系统。

Locking the working device and slewing platform in order to prevent the misoperation. Additionally, the idle system of engine can be started only when hydraulic system is locked.



大型踏板 Large pedal

前后侧均装备有便于上下机器的大型踏板。

There are pedals at the front and back of excavator in order to easily getting in and getting off the excavator.

阿特拉斯(ATLAS)驱动装置，装备意大利进口邦飞利行走减速器，具有结构紧凑，并可实现高输出扭矩。

ATLAS excavator's driving device is equipped with Italia BONFIGLIOLI driving reducer with compact structure and realizes high output torque.



安全稳定加强型岩石斗，挖掘力更大！高耐磨HARDOX岩石斗，强有力的挖掘斗形设计。

Safe, stable and strengthened rock bucket has higher digging power. Equipped with high wearable HARDOX rock bucket and powerful bucket shape.



销轴表面全部采用特殊渗氮工艺制造，强度更高，使用寿命更长！

The surface of pin is processed by the special nitriding process to make higher intensity and longer life

实现了车辆易维护保养性

Accessible Repair and Maintenance

—— 人性化的设计，为您提供方便快捷的工作环境

Humanity design prov



独有的单操作杆 Particular single operating lever

阿特拉斯(ATLAS)独有的单操作杆，使机器操作更简易，并且带有两级变速的控制按钮，增加了机器的可操纵性，实现挖掘机的前进、后退和转向。

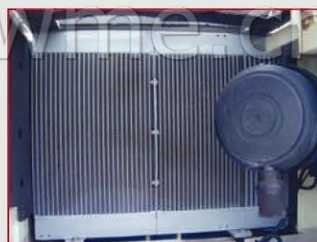
ATLAS particular single operating lever makes machine easily operate. Furthermore the operability is improved and excavator go forward and backward and steering flexibly by the two-stage shifts control button.



全铸铁配重 Pure cast counterweight

阿特拉斯(ATLAS)挖掘机，全铸铁配重，无任何填充物，环保，无二次污染，吸音降噪。整车结构设计紧凑适合各种工况施工。

ATLAS excavator has a pure cast counterweight without any fillings and environmental pollutions and second pollutions, and it also can absorb sound and reduce noise. The design of complete excavator is compact and suitable for various working conditions.



有效的冷却系统 Efficient cooling system

并列式散热器散热有效面积增大，增强散热空气通过率，更有效的加大散热效果。

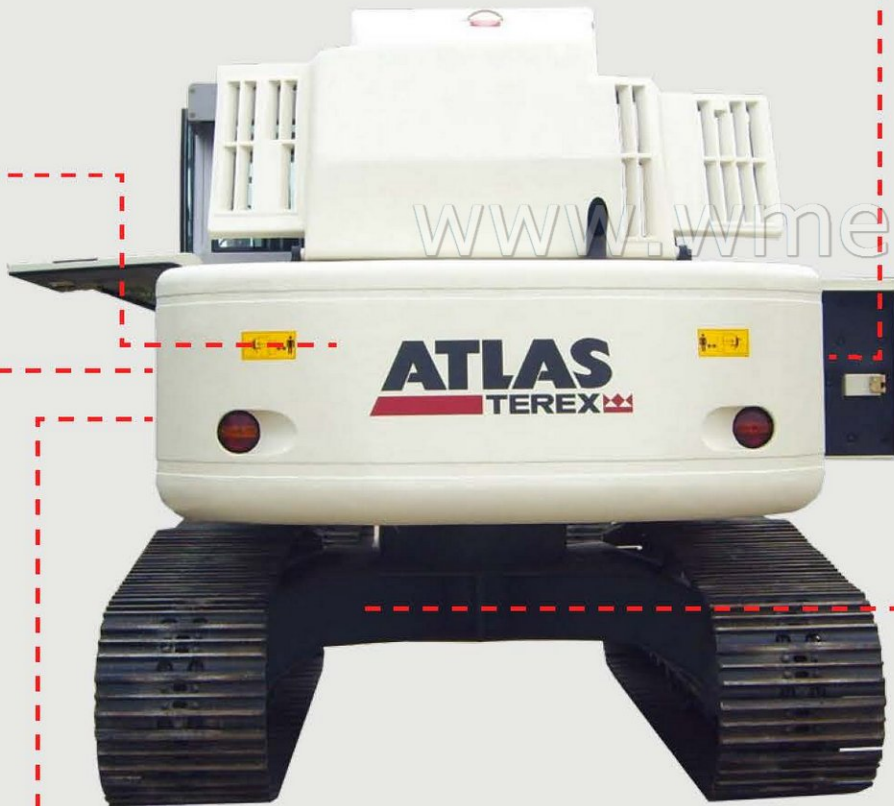
The efficient heat dissipation areas of paratactic radiators are extended to improve the air circulation and heat dissipation effect.



宽敞的储物空间 Spacious storage space

2006LC

Provides convenient and fast working environment



标准装备有油水分离器
Standard equipment with oil separator

油水分离器可除去混入燃油中的水分及杂质，以防止燃油系统发生故障。

The oil separator can remove moisture and impurities of fuel to prevent the breakdown of the fuel system.



倾斜式履带机架 Oblique track frame

采用了不易积存泥土的倾斜型履带机架。其清扫作业极其简单可行。

Adopt oblique track frame that dirt can not accumulate easily and the cleaning is simple.

2006LC

发动机 Engine

制造商 Manufacturer	德国Deutz发动机公司 Deutz engine
型号 Model	BF4M2012C
额定功率 Rated power	88kw(120HP)
最大功率(ISO1585) Max. power (ISO 1585)	98KW(133HP)
缸数/型式 Cylinder/model	4缸/直列 four-in-line
缸径和行程 Cylinder bore and stroke	101x126mm
活塞排量 Displacement of piston	4038cm ³
进气方式 Charging	涡轮增压中冷 turbo charging, inter-cooled
排放符合欧洲II号排放标准 Emission conforms to Euro Standard II	

液压系统 Hydraulic system

装有电脑控制的AWE-6电控系统, 液压采用负荷传感技术。具有精细比例的燃油节省型供油控制。 Equip with AWE-6 electrical control system, adopt load sensing technology for hydraulic system, and with precision-ratio fuel saving for fuel supply control.

防过载双级安全保护。 Two-stage safeguard for hydraulic system against overload. 具有防气穴功能, 举升及回路具有节流作用。 Anti cavitations function, throttling function in the lifting and folding circuit.

举升回路中具有压力保持与微沉控制。 Keeping pressure and fine control in the lifting and folding circuit.

液压系统主泵 Main pump	单个轴向柱塞泵 1x axial piston pump
主泵型号 Model	林德HPR105 Linde HPR 105
系统流量 System output	240L/min
最大工作压力 Max. operating pressure	340bar

电气系统 Electrical system

工作电压 Operating voltage	24V
高性能免维护蓄电池 High-performance battery	2x88Ah
电控系统符合SIVZ0标准 Electrical system accords with sIVZ0	

回转装置 Slewing mechanism

具有比例控制的扭矩特性和柔性制动性能。 Torque with proportional control, brake flexibility

回转马达 Slewing motor	带有先导阀式轴向柱塞马达 axial plunger motor with pilot valve
回转驱动方式 Slewing gear box	行星齿轮、内啮合回转驱动 planetary gearing
回转制动 Slewing brake	盘式制动 disc brake
回转速度 Slewing speed	9r/min
回转力矩 Slewing torque	37.2kNm
*如回转压力低于120bar,在坡上直行时由脚制动踏板可将回转操作锁止, 保证安全。 Slewing operation is locked by foot brake pedal when straight forward travels, if slewing pressure is lower than 120 bars.	

行走装置 Travel mechanism

驱动装置安装在车架内侧 Drive unit located inside of the chassis frame.	
行星式驱动 Planetary gear	
自动式多盘制动机构 Automatic acting multi-disc-brake	
双作用行走制动阀 Double acting traveling brake valve	
两级速度的行走马达, 随行驶阻力的增减自动换挡。 Dual-stage speed drive motor, automatic change of the traveling speed in case drive resistance increases or decreases.	
行走速度 Travel speeds:	
1级 Stage 1	0-2.1km/h
2级 Stage 2	0-4.8km/h

噪音等级 Noise level

噪音等级低于欧盟限值(动态噪音测量符合2000/14欧盟法规) Noise level well below EU limits (dynamic noise measurements acc. 2000/14 EU regulations)	
驾驶室外(LWA) Outside cab	101dB(A)
驾驶室内(LpA) Inside cab	76dB(A)

备选配置 Optional devices

集中润滑系统 Central lubrication system	
全球卫星定位系统(GPS) Global Position System	
液压破碎器管路 Hydraulic hammer tube line	
抓斗装置 Grab bucket	
B53.41动臂过载报警及动臂止落阀 B 53.41 boom overload warning and tubes falling-prevention valve	
800mm宽履带 800mm track	

下车机架结构 Undercarriage

专门设计的X型车架强度高、钢性好, 坚固耐用 Special designed X-shape frame with high strength, high rigidity and long duration

有较高的离地间隙, 通过性好 High ground clearance with nice maneuverability 加长型的行走装置提高整机稳定性 Longer drive mechanism improves the stability of the machine

密封式润滑履带 Sealed and lubricated track	
导向轮、支重轮和托链轮使用可靠、寿命长 Stable and long life idler, track roller and carrier roller	
高质量的驱动轮 High quality driving roller	

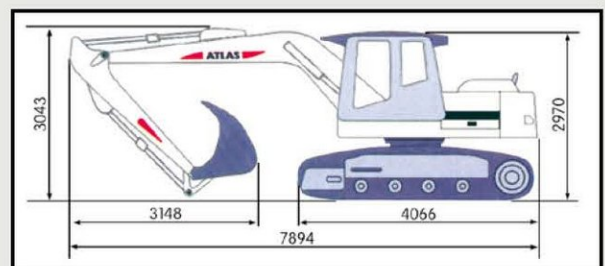
驾驶室 Cabin

宽敞舒适的驾驶空间 Comfortable and spacious driving space	
整机电子监控, 检测功能全 Electrical control and all-round detecting functions	
低噪音, 低振动 Noise damping and low vibration	
全方位的操作视野 All-wave operating view	
大容量的冷暖空调 High-power air conditioner	
可调式操纵台 Adjustable operation panel	
全方位可调节式座椅 All-wave adjustable chair	
符合人机工程的操纵杆 Ergonomic steering column	

操纵系统 Operating system

伺服带有微调的双控制系统(SAE推荐使用)、挖掘机的前进、后退、转向由手柄控制。 Servo device with adjustable dual control system (SAE recommendation); manual control for forward, backward and turning 也可选用脚踏阀控制前进及后退(符合ISO模式) Foot pedals for forward and backward drive conforming to ISO mode

主机尺寸 Main machine dimension



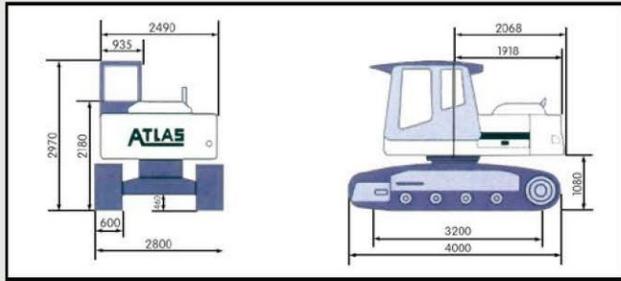
维修参数 Maintenance parameters

燃油箱 Fuel tank	264L
---------------	------

2006LC

液压油箱 Hydraulic oil tank 180L
 发动机油底壳 Engine oil pan 10L

运输尺寸 Transportation dimension



动臂参数 Boom parameter

C53.4MG带有两个动臂油缸和一个斗杆油缸的标准动臂,有效长度4850mm C53.4MG standard boom with two boom lifting cylinders and one jib cylinder, effective length 4850mm

斗杆参数 Jib parameter

D53.3A标准斗杆,有效长度2660mm D53.3A standard jib, effective length 2660mm

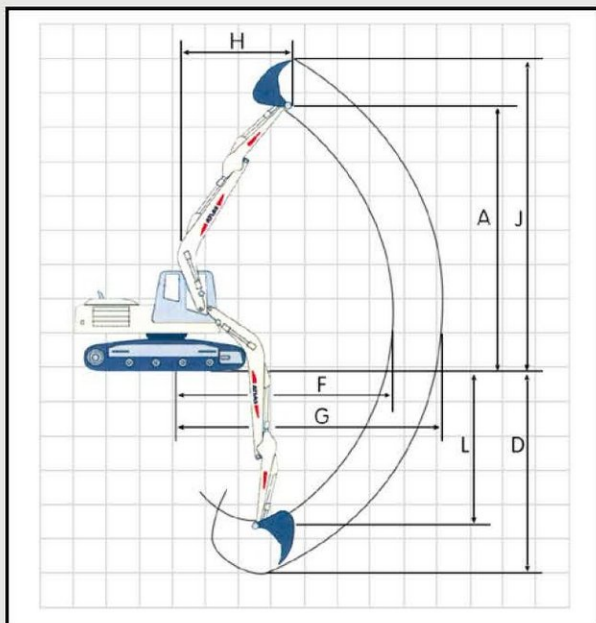
铲斗参数 Bucket parameter

岩石铲斗斗容0.85m³,宽1000mm Rock bucket capacity 0.85m³, width 1000mm

铲斗油缸 Bucket cylinder

F53.1带摇臂、连杆机构的铲斗油缸 F53.1 bucket cylinder with rocker arm and linkage mechanism

作业范围 Working range



整机配置技术参数 Configuration parameter of whole machine

实际重量17850Kg (不包括操作员、润滑油、冷却液、燃油) Operating weight 17850 Kg (not including operator, lubricant, cooling fluid, fuel)

斗杆D53.3A-有效长度2660mm Jib D53.3A-effective length 2660mm

配置: A53.82 C53.4MG F416 Equipment: A53.82 C53.4MG F416

A	铲斗铰轴的最大高度 Jib height (max.)	mm	7800
D	最大挖掘深度 Digging depth (max.)	mm	5960
F	地面最大挖掘范围 Length of jib (max.)	mm	7810
G	最大挖掘半径 Outreach radius (max.)	mm	9300
H	最大高度的挖掘半径 Outreach length (max.)	mm	4700
J	最大挖掘高度 Outreach height (max.)	mm	9290
L	铲斗转轴的最大深度 Bucket pivot	mm	4460
	铲斗 Bucket	L	850
	斗杆挖掘力 Jib digging force	KN	78
	铲斗挖掘力 Bucket digging force	KN	130

静态最大提升能力(t)主机A53.82动臂C53.4MG Static maximum lifting force (t) main machine A53.82 boom C53.4MG

斗杆D53.3A有效长度2660mm Jib D53.3A effective length 2660mm

	3.0		4.0		4.5		5.0		5.5		6.0		7.0	
	l	q	l	q	l	q	l	q	l	q	l	q	l	q
5	-	-	-	-	-	-	3.71	3.71	3.57	3.57	3.45	3.45	-	-
3	-	-	5.37	5.37	4.8	4.8	4.38	4.38	4.05	3.87	3.78	3.42	3.39	2.73
1	-	-	6.56	5.53	5.7	4.72	5.06	4.11	4.55	3.62	4.15	3.23	3.54	2.63
0	3.82	3.82	6.63	5.39	5.81	4.6	5.15	4.0	4.63	3.53	4.2	3.16	3.51	2.59
-1	5.87	5.87	6.37	5.36	5.64	4.55	5.03	3.96	4.52	3.5	4.08	3.13	3.31	2.58
-2	7.33	7.33	5.80	5.38	5.19	4.56	4.65	3.96	4.17	3.5	3.73	3.14	-	-
-3	5.98	5.98	4.87	4.87	4.37	4.37	3.90	3.90	3.44	3.44	2.91	2.91	-	-

1、静态最大提升能力(t):包括33%的安全稳定储备并且以87%的液压提升力计算。稳定性符合ISO10567,物料比重1.8t/m³。 The static maximum lifting force (t) includes stability margin of 33% and are calculated at 87% of hydraulic lifting force and stability accords with ISO 10567 standard. Bulk weight 1.8t/m³

2、方向: l=纵向 q=横向 Directions: l=longitudinal q=lateral