

WUHAN MACHINE EQUIPMENT CO., LTD

2F, BLOCK#7, SBI STREET, GUANG GU, WUHAN, CHINA

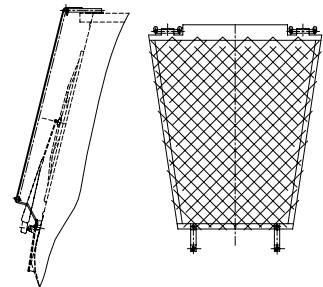
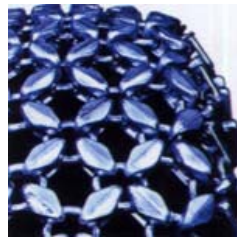
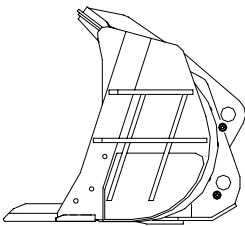
Email: info@wme.cn Web: www.wme.cn Fax: +86-21-23 010 666

Wheel Loader 50E for hot slag



The wheel loader 50E is specially designed for loading hot slag in steel factory. This model have been used in some China steel factory, and fit for their work condition, and lower their cost greatly.

Features



-Bucket

With flat bucket, which can reduce the effect of distortion in high temperature work condition.

The bucket teeth is wider, thicker, and longer than usual.

The bucket is thicker, and with steel bone inside so that it is very strong.

The teeth and the bucket are with wearable and heat-resistant material.

-Tyre

The tyre are solid and special. They are all with tyre protect chain, which can prevent the hot slag pasting on the tyre.

-Cab

With toughened glass of thickness 10mm.

With protection of dense wire mesh before the front glass.

With air conditioning ROPS cab.

There is heat-resistant steel sheet under the bottom of the wheel loader.

All key parts are with heat-resistant protection.



主要性能参数 Main Specification

铲斗容积..... 2.3m³
 Bucket Capacity..... 2.3m³
 额定载重量..... 5000kg
 Rated load..... 5000kg

最大掘起力..... 160KN
 Max. digging force..... 160KN
 最大牵引力..... 137KN
 Max. traveling force..... 137KN
 操作重量..... 22000kg ± 5%
 Operating Weight..... 22000kg ± 5%



发动机 Engine

型号	上柴 C6121
Model	ShangChai C6121
型式 Type	立式四冲程直喷式
额定功率 Rated Power	162 kW
额定转速 Rated Speed	2200 r/min
最低燃油消耗率 Min fuel Consumption	≤ 226 g/kWh
最大扭矩 Max. Torque	843 N·m



变速箱 Transmission System

变矩器型式	单级单相三元件
Torque converter type	Single stage, single phase, three elements
冷却方式	油冷压力循环式
Cooling ways	Oil cooling, pressure circling
变速箱型式	圆柱直齿轮平行轴常啮合式
Transmission type	Spur gear parallel shaft, constant-mesh
档位 (前进档 / 后退档)	前二后二
Shift (forward/reverse)	F2/R2
前进行驶速度 km/h	6 10
Forward traveling speed	
后退行驶速度 km/h	7 14
Reverse traveling speed	



驱动桥和主传动 Axles and Main drive

驱动系统	四轮驱动
Drive system	four-wheel driving
前后桥主传动型式	螺旋伞齿轮一级减速
Main drive type	one spiral bevel gear, single-stage
减速比 Gear ratio	4.625
轮边减速型式	圆柱直齿轮行星传动
Hub reduction	planetary gear two-stage
减速比 Gear ratio	4.9288
最大爬坡能力 Max. grade ability	30°



转向系统 Steering system

型式	铰接式、负荷传感全液压转向
Type	Middle articulated frame, Co-axis flow amp. steering
转向角 Steering angle	± 38°
最小转弯半径 Min. steering radius	5970 mm
液压转向器排量 Displacement of redirecter	1000 ml/r
液压泵 Mode of steering pump	齿轮泵 gear pump
转向油缸数——缸径×行程	2-φ90×400
Steering cylinders inner bore × stroke	2-φ90×400
工作压力 Operation pressure	16 MPa



制动系统 Brake system

脚制动型式: 单管路, 气顶油, 钳盘式四轮制动
Travel brake type: Single-pipe, air over hydraulic caliper disc brake, activate 4-wheel brake
手制动型式: 机械操纵中央钳盘式制动
Service brake type: mechanical control, clamp brake



工作液压系统 Operation hydraulic system

型式 Type: 比例先导操纵 Pilot control	
油缸数量——缸径×行程 No. of Cylinder-bore × Stroke	
举升油缸 Lift cylinder	2-φ180×705
翻斗油缸 Dump cylinder	1-φ180×530
多路阀 multi-way valve: 液控多路换向阀 Hydraulic multi-way valve	
系统工作压力 System operation pressure	20 MPa
提升时间 Lifting time	6.2s
下降时间 Lowering time	3.8s
卸载时间 Dumping time	1.8s



轮胎 Tyre

前轮	特制钢轮
后轮	23.5-25 实心轮胎



再注容量 Refill Capacity

燃油箱 Fuel Tank	250L
发动机曲轴箱 Engine crank case	42L
液力变矩器和变速箱 T/C and Transmission	42L
液压油箱 Hydraulic oil tank	180L
前后桥主传动 Axles main drive	2×8L
轮边减速器 Hub reduction	4×0L
制动系统 Brake system	4×0L



工作装置 Work Equipment

高强度“Z”型连杆机构, 掘起力大, 可选购集中润滑装置	
Strong Z-bar structure provides strong breakout force, Strong Z-bar structure provides strong breakout force.	
特制铲斗, 采用特制耐磨耐热材料, 有效减少炉前的高温变形	
Special bucket made of wearable & heatproof of steel, protecting the bucket from deforming due to overheating	
卸高 (45° 卸载角度)	3050 mm
Dumping clearance (at dumping angle 45°)	3050 mm
卸距 (45° 卸载角度)	1107 mm
Dumping reach (at dumping angle 45°)	1107 mm