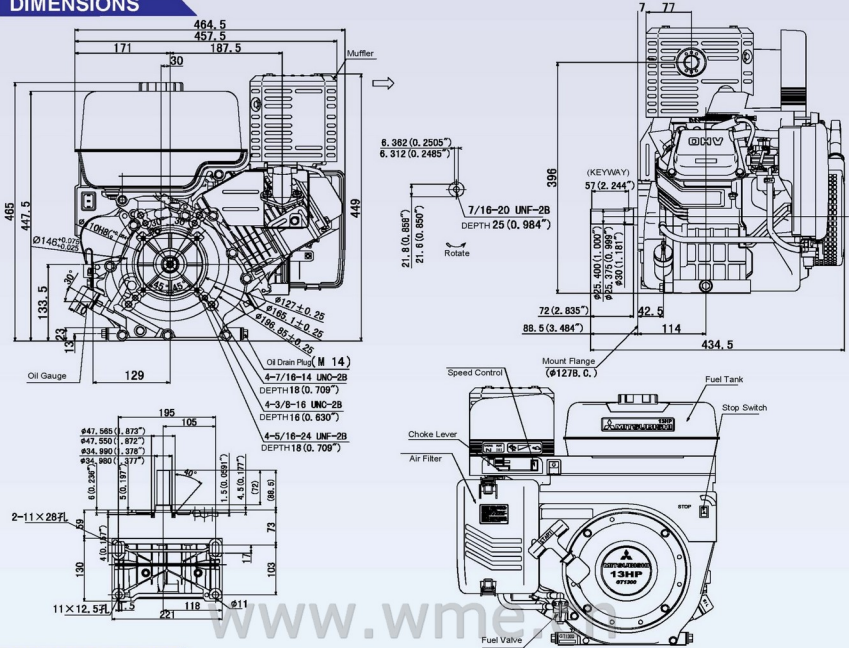


DIMENSIONS



PTO SHAFT TYPE

GT1300	JIS (with JIS Mount Flange)	SAE (with SAE Mount Flange)
KEYWAY (General)	<p>Keyway dimensions: 21.8 (0.858") width, 7/16-20 UNF-2B DEPTH 25 (0.984") depth, 21.5 (0.846") diameter, 21.5 (0.846") diameter.</p>	<p>Keyway dimensions: 21.8 (0.858") width, 7/16-20 UNF-2B DEPTH 25 (0.984") depth, 21.5 (0.846") diameter, 21.5 (0.846") diameter.</p>
PUMP	<p>Pump shaft dimensions: 80 length, 59.740.4 length, 20.3 diameter, M20x1.5 thread, Ø25.4 (1.0) diameter, Ø25.4 (1.0) diameter.</p>	<p>Pump shaft dimensions: 80 length, 59.740.4 length, 20.3 diameter, M20x1.5 thread, Ø25.4 (1.0) diameter, Ø25.4 (1.0) diameter.</p>
TAPER (Generator)	<p>Taper shaft dimensions: 49.5 length, 35 length, M10x1.5 thread, DEPTH 20, TAPER 1/10, Ø25 diameter, Ø25 (1.0) diameter.</p>	<p>Taper shaft dimensions: 110.64 (4.353") length, 35 (1.378") length, M10x1.5 thread, DEPTH 15, TAPER 3/16", Ø25 (1.0) diameter, Ø25 (1.0) diameter.</p>



www.wme.cn