

# DGY20-D

# HYDRAULIC PIPELAYER

## 全液压吊管机



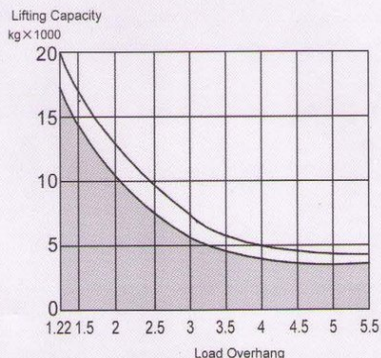
CONSTRUCTION DRAWING IS ONLY FOR REFERENCE

- 最大起重量: 20,000kg  
Max. Lifting Capacity: 20,000kg 44,092lb
- 发动机: 斯太尔 WD10G  
Engine: STEYR WD10G
- 整机重量: 23,700kg  
Operating Weight: 23,700kg 52,249lb

### 主要特点 Main Features

- 采用多功能吊管机专用底盘, 斯太尔发动机, 功率储备系数高。
- 发电传动系统采用国际知名品牌同步齿形带传动, 传动效率高, 寿命长;
- 吊臂具有固定式、折叠式和伸缩式等多种形式, 满足不同施工需要。
- 采用模块化设计, 可以根据用户需要安装不同的施工用设备, 如电焊机、加热器等。
- 除了能完成吊管机功能外, 还可实现供气、焊接、加热等功能。
- Adopt special designed chassis for pipelayer, Powered by Steyr Engine, which reserves enough power to meet any tough working conditions.
- The power train to alternator use international advanced synchronized tooth belt, which has high efficiency and long life.
- The boom has fixed type, foldaway type and telescopic type, meeting the different requirement of the construction.
- Modular design has facilitated removal/installation of components. Welding machine, Compressor and electric heater can be optional equipped against requirement.
- Besides the pipe laying function, it also can realizes welding, Generating, Air feed and heat up.

### 起重性能曲线 Lifting Performance Curve

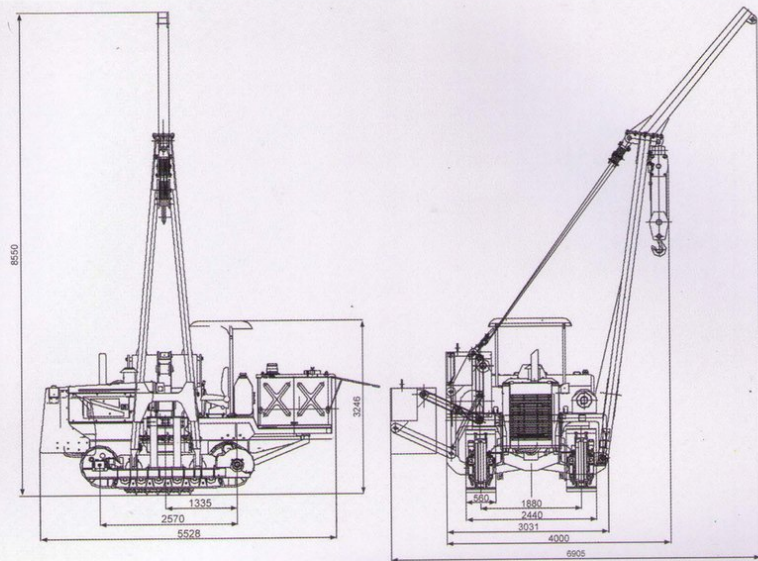


Pipelayer DGY20-D  
[www.wme.cn/Pipelayer/](http://www.wme.cn/Pipelayer/)



## 外形尺寸图

### Overall Dimensions



## 主要技术参数 Main Specifications

最大起重量	Max. lifting capacity	20,000kg	44,092lb
带副臂时起重量	Lifting capacity with jib	3,000kg	6,614lb
主臂最小幅度最大起重力矩	Max. lifting moment at Min. overhang	239kN·m (196kN×1.22m)	176,368lb·ft (44,092lb×4ft)
主臂最大幅度最大起重力矩	Max. Lifting moment at Max. overhang	186kN·m (41.2kN×4.5m)	136,796lb·ft (9,268lb×14.76ft)
主臂吊钩最大起升高度	Max. lifting height of hook with boom	4.2m	13.78ft
主臂长度	Boom length	6.0m	19.69ft
副臂长度	Length of jib	3.0m	9.84
起升速度 (6 倍率)	Hoisting speed (six part line)	10 m/min	32.81ft/min
变幅时间 (1.2~4.5m)	Boom elevating time	30s	
底盘型号	Model of chassis	T140-2	
发动机型号	Model of diesel engine	斯太尔 WD10G	STEYR WD10G
额定功率	Rated power	115kW/1800rpm	
环境温度	Temperature of surroundings	-20℃~+40℃	-4°F~104°F
液压泵型号	Model of oil hydraulic pump	P5100	
系统额定工作压力	Rated working pressure of system	20,000kPa	2,900psi
起升机构	Hook winch	液压驱动、行星传动 Hydraulically driven, Planetary transmission	
变幅机构	Boom winch	液压驱动、行星传动 Hydraulically driven, Planetary transmission	
发电机型号	Model of Alternator	STAMFORD UC1274G24	
配电焊机推荐型号	Model of arc welding equipment (Recommended)	林肯 DC-400 或松下 YM-350RF2 Lincoln DC-400 or Panasonic YM-350RF2	
压缩机型号	Model of compressor (recommended)	W-0.8/1.6 或 W-0.8/2.0	
外形尺寸 (长×宽×高) Overall dimension (Length×Width×Height)	带吊臂时	With boom	5,528×4,33×8,55m 18.14×14.21×28.06ft
	运输时	Without boom	5,528×3.24×3.20m 18.14×10.63×10.50ft
整机总质量	Operating weight	23,700kg	52,249 lb