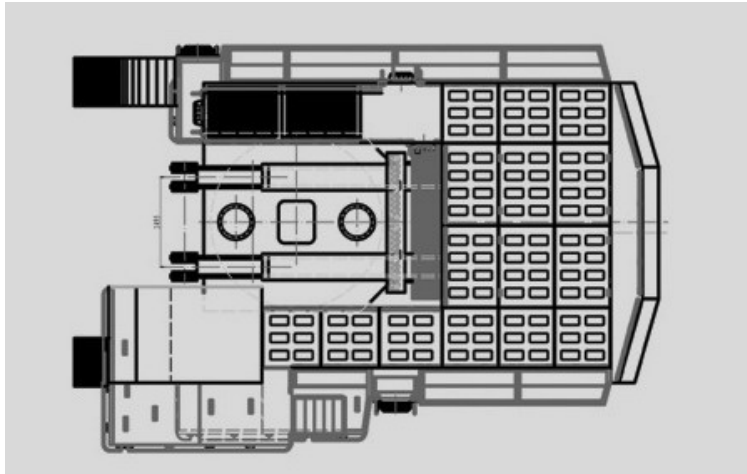
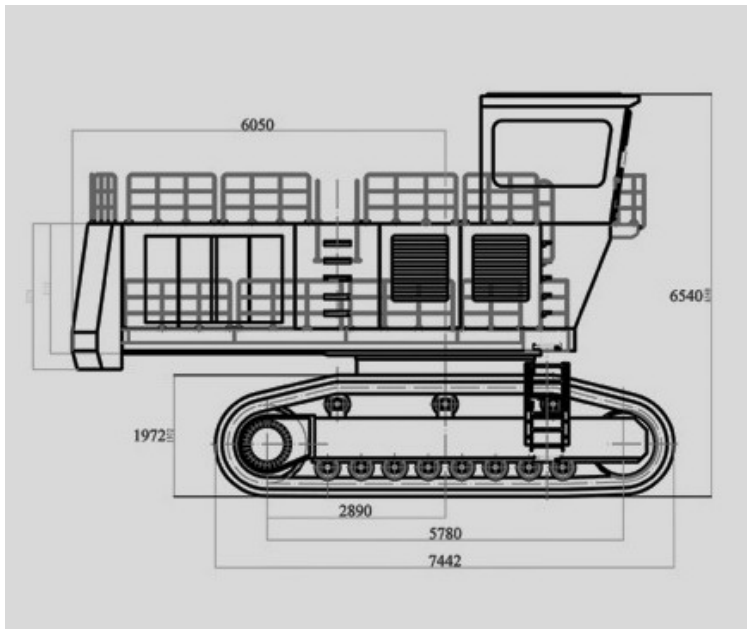
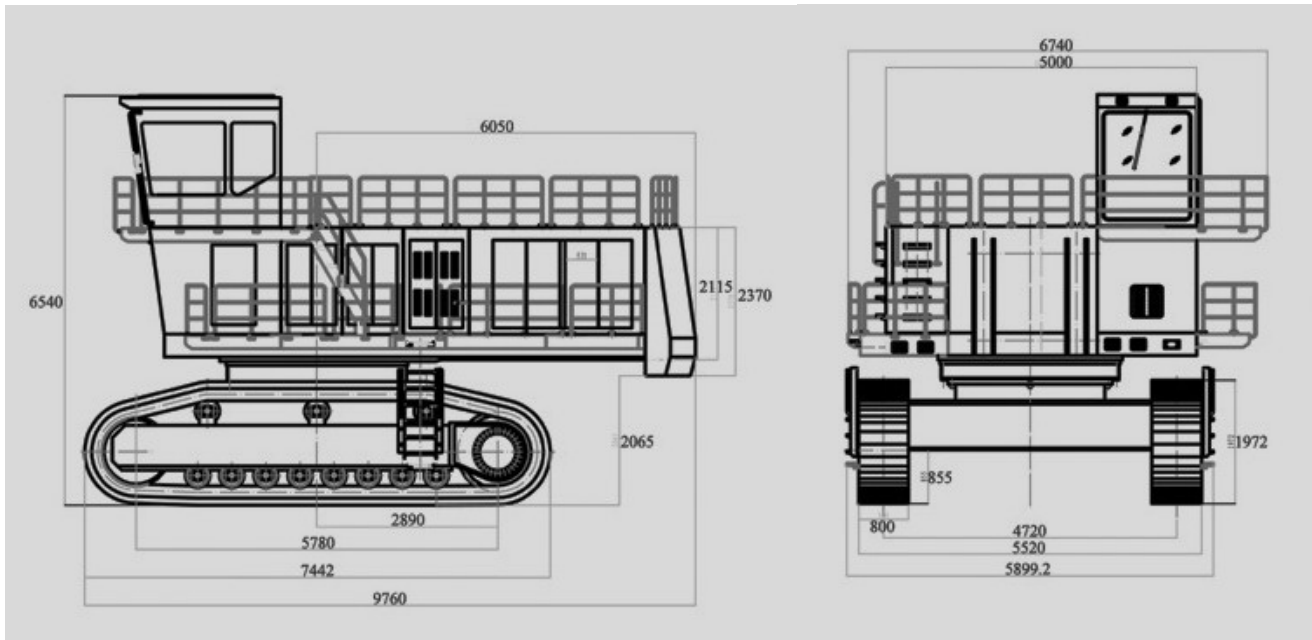


WUHAN MACHINE EQUIPMENT CO., LTD
 2F, BLOCK#7, SBI STREET, GUANG GU, WUHAN, CHINA
 Web: www.wme.cn Email: info@wme.cn Fax: +86-21-23 010 666

Track Excavator 1850



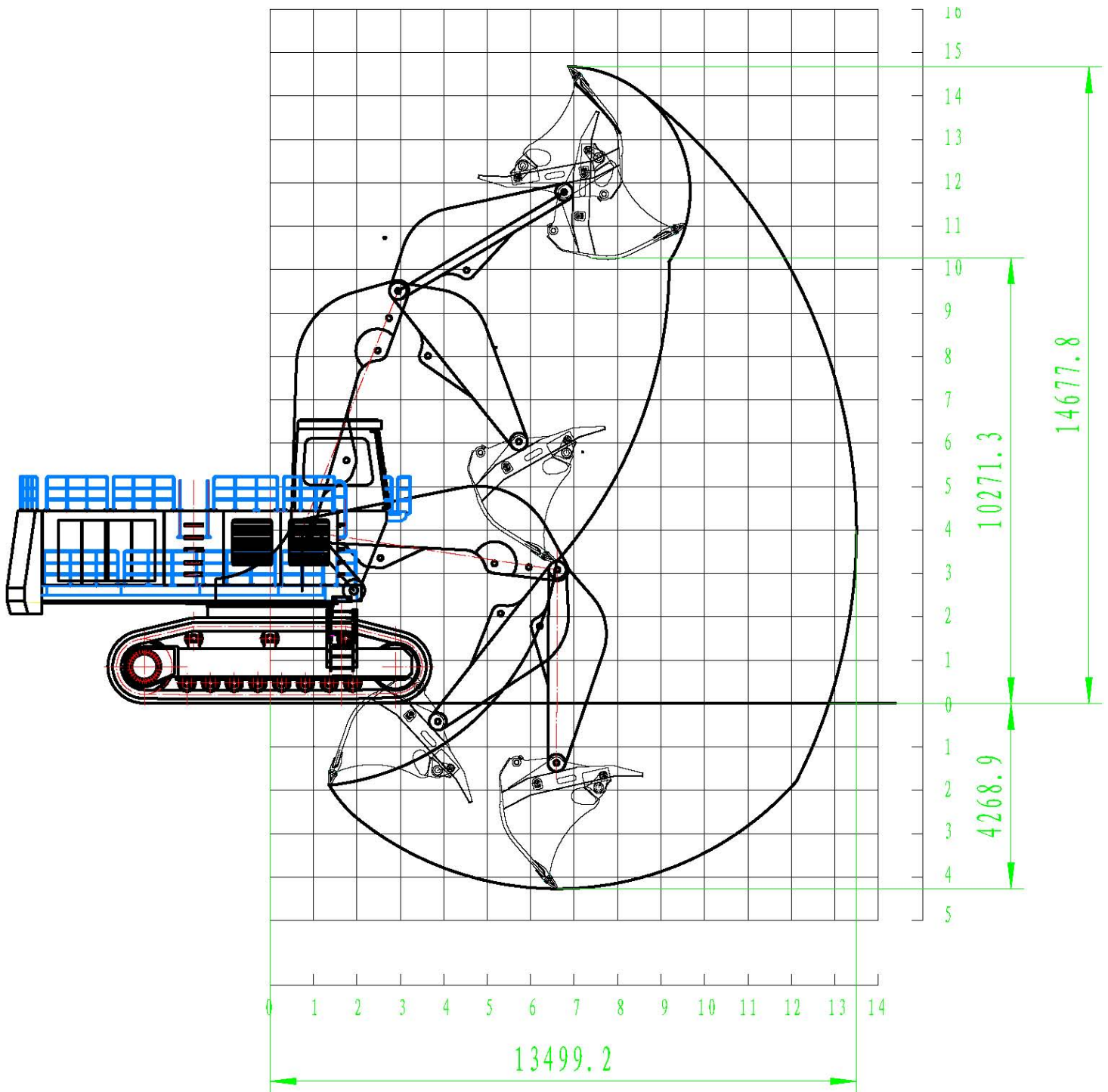
No.	Component Name	Model	Manufacturer
1.1	Diesel engine	2×QSX15	Cummins/America
1.2	Or Electromotor	YJK4002-4	Xiangtan Electromotor/China
2	Main pump	6×A11VL0190	Rexroth/Germany
3	Main valve	2×8M8-32	Rexroth/Germany
4	Double join valves	2M0-32	Rexroth/Germany
5	Swing motor	2×A2FE160	Rexroth/Germany
6	Swing reduction gear	2×GFB80T3	Rexroth/Germany
7	Travel motor	2×A2FE355	Rexroth/Germany
8	Travel reduction gear	F360	OK/Germany
9	Armrest Pilot Valves	4TH6E70	Rexroth/Germany
10	Foot pedal pilot valves	4TH6NR	Rexroth/Germany
11	Logical valve	026710	Rexroth/Germany
12	Solenoid valve	4WE6C	Rexroth/Germany
13	Track Ass.		ITM or Berco/Italy
14	Driver's Seat		Grammer/China
15	Hydraulic hose + System seal		Parker/America
16	Cylinder seal		Busak + Shamban/America
17	Automatic lubricating system		BEKA/Germany
18	Air-condition		Wuhan Jingdong/China



Main spec

No.	Item		Unit	Data		
				Face shovel	Reverse shovel	
1	Machine weight		t	182	180	
2	Bucket capacity	Standard	m ³	11.0	11.0	
		Range	m ³	9.0~14.0	6.0~11.2	
3	Power system	Diesel engine	Model	2×QSX15		
			Power /Speed	kW/rpm	2×380/1800	
			Fuel tank Capacity	L	2100	
		Or Electromotor	Model	YJK4002-4		
			Power /Speed	kW/rpm	2×355/1485	
			Voltage	V	6000	
4	Hydraulic system	Type		Six pumps and several loops, limit load variable system		
		Max. pressure of main oil circuit	MPa	30		
		Max. flow of main oil circuit	L/min	4×411.5		
		Swing type		Independence open type		
		Flow of swing oil		2×411.5		
		Operating style		Pilot control		
		Hydraulic oil tank capacity	L	1500		
5	Performance	Swing speed	r/min	5.5		
		Travel speed	km/h	2.4		
		Max. pulling force	KN	1027		
		Gradeability	%	70		
		Ground pressure	MPa	0.17		
		Circulating time of operation	s	27		
6	Working data	Boom length	mm	5900	8700	
		Stick length	mm	4450	3900	
		Max. digging radius	mm	13100	15700	
		Max. digging depth	mm	3100	9200	
		Max. digging height	mm	14000	13380	
		Max. unloading height	mm	9635	8620	
		Max. digging force of stick	KN	680	600	
		Max. breakout force of bucket	KN	700	570	

1850 working range



Features:

* with all advantage of 1250. 1250 is with one engine for Tri-pump & Tri-circuits hydraulic system, while 1850 is with two engine, and each engine for Tri-pump & Tri-circuits hydraulic system. This is called PMS (multi-Pump Manage System).

NOTICE: Specifications are subject to change without notice, due to our endless improvements and innovations.