

320 GX

HYDRAULIC EXCAVATOR



Net Power-ISO 9249	105.6kW (142 hp)
Operating Weight	19800 kg (43650 lb)
Max Digging Depth	6430mm(21.1 ft)
Bucket Capacity	0.93 \pm 0.0m ³



THE CAT® 320 GX

FEATURES FOR FAST PAYBACK¹

Cat® 320 GX combines advantages such as reliability, durability, high productivity, and low operating costs, making it your ideal choice. Equipped with a Cat C4.4 engine and an aftertreatment system, the 320 GX requires no downtime and no Diesel Exhaust Fluid (DEF). It also meets China's National Stage IV Non-Road Emission Standards. Meticulously designed and expertly built, this excavator is backed by unparalleled support from our professional team, helping you pave the way to success.



CAT® EXCAVATORS

Cat excavators offer you more choices than ever for your business.

- + MORE MODEL OPTIONS
- + MORE FUEL EFFICIENCY
- + MORE PRICE POINTS

EASY TO

OPERATE AND MAINTAIN



Trust Caterpillar's time-proven engineering and manufacturing know-how for easy operation and excellent reliability.

- + Stable and responsive design increases jobsite efficiency.
- + Boom, stick, and bucket linkages are built to withstand typical 20-ton work demand, so you can be confident working in a wide variety of applications.
- + Automatic hydraulic oil warm up makes work more efficient and helps prevent premature wear of components, so you get longer service life.
- + Cat undercarriage comes with track pins and bushings grease sealed to enhance performance and service life.

LOWER MAINTENANCE COSTS

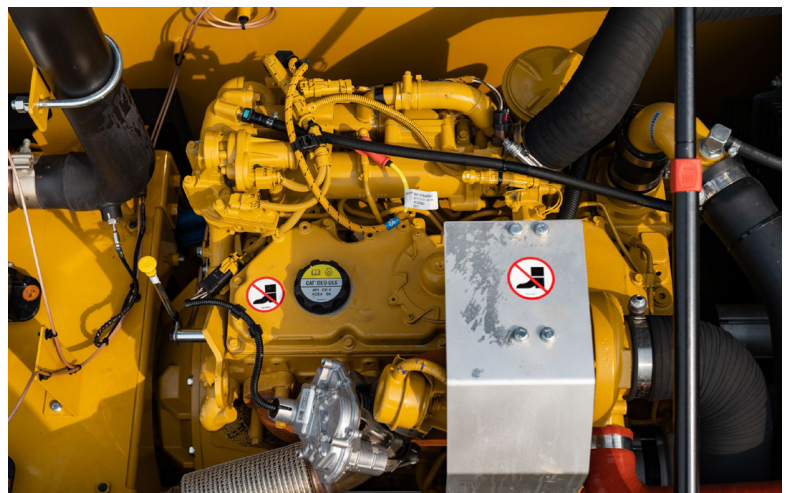
INCREASE YOUR PROFIT



UP TO 20%

LOWER MAINTENANCE COSTS

Better filters with extended maintenance intervals mean you will do more work with less downtime and lower cost. In fact, the 320 GX has maintenance-free batteries and a hydraulic oil system that requires no maintenance for 3,000 hours. When you do have to perform maintenance, filters and drains are grouped together to make it quick and easy.



FAST PAYBACK

The Cat 320 GX features easy operation and maintenance, plus productivity balanced with low costs for fast payback.



LOW OWNING COSTS

The 320 GX features simplified options for reduced acquisition costs to help you get the most work done at a lower cost. Everything about the 320 GX, like its robust structures, access to components, and widely available parts, is designed to put more money in your pocket.

LOW FUEL CONSUMPTION

Synchronized engine and electrohydraulic systems lower fuel consumption. Smart mode helps you further reduce fuel costs by automatically adapting engine speed for your specific application.

LOW MAINTENANCE COSTS

Extended maintenance intervals, better filters, maintenance-free batteries, and a hydraulic oil system that requires no maintenance for 3,000 hours all contribute to low maintenance costs.



REDUCE FUEL CONSUMPTION BY UP TO 15% ¹

The Cat C4.4 engine and electrohydraulic system work in sync to help you move plenty of material while using less fuel.

WORK SMART. SAVE MONEY.

The Cat 320 GX is equipped with two modes to help manage fuel consumption for your specific applications – power mode and smart mode.

Power mode is the traditional setting where you can manually dial engine speed up or down based on your work. Smart mode automatically adapts engine speed for you – up for high productivity and down for lighter loading, resulting in higher operating efficiency.

¹ Compared to 320D2 GC Tier 3 global fuel burn averages. No significant change when comparing 320 GX Tier 4 Final/Stage V to 320 GX Tier 3.

FUEL SAVINGS ADD UP

FUEL BURN PER YEAR



320 GX **21 960 L**

THE 320 GX ADVANTAGE
3960 L SAVED!

320D2 GC **25 920 L**

SCENARIO

Excavators completing typical excavation work.

CALCULATION

320D2 GC:
14.4 L/HR x 1,800 HR/YR=25 920 L/YR

320 GX:
12.2 L/HR x 1,800 HR/YR=21 960 L/YR

BUILT-IN SAFETY

LOOK OUT FOR YOUR PEOPLE AND YOUR EQUIPMENT

- + Smooth handrails and anti-skid steps make getting on and off the machine more secure.
- + Daily maintenance checks can be performed with most points accessible from ground level, making the maintenance faster, easier, and safer.
- + The storage box lid is lockable to protect your gear.
- + The cab's wider field of view and available rearview camera enhance jobsite visibility.
- + An optional ISO-certified rollover protective structure (ROPS) cab is available in some regions to help protect the operator in the event of a rollover.

1,000 WAYS TO STAY SAFE.

FACT:

SLIPPING IS ONE OF THE
BIGGEST CONTRIBUTORS
TO WORKPLACE INJURIES.*



OUR ANTI-SKID PLATES FEATURE

1,000+ INDIVIDUAL PERFORATIONS
FOR BETTER TRACTION

*SOURCE: [HTTPS://WWW.OSHA.GOV/DTE/GRANT_MATERIALS/FY07/SH-16625-07/SLIPSTRIPSFALLS.PPT](https://www.osha.gov/dte/grant_materials/fy07/sh-16625-07/slipstripsfalls.ppt)



CAB TAKES THE HARD OUT OF WORK

Comfort and movement efficiency help keep operators productive and alert all shift long. The standard seat is wide and adjustable to suit individual operator preferences. The controls, including push-button start, are simple to use and easy to reach, allowing you to operate comfortably with minimal twists and turns.



SMART DESIGN

Operator ID remembers your preferred settings for power mode, joystick pattern, and joystick response. Just plug in your password and go to work. Seat adjustments, touchscreen monitor, and controls are conveniently located to reduce reaching and twisting.

ALL-ROUND VISIBILITY

Large windows at the front, sides, and rear give excellent visibility in all directions from the operator seat. The cab structure uses narrow front cab pillars to allow a wider field of view to the front. A rearview camera is an available option.

ACCESS, CONNECTIVITY, AND STORAGE

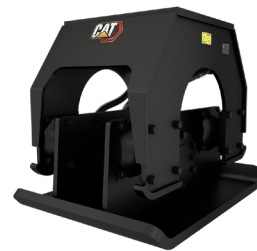
The AM/FM radio includes Bluetooth® technology, USB, and auxiliary ports for connecting and charging devices; a 24V DC outlet makes phone charging even faster. Storage space in front of the controls can hold a large cup and wide cell phone. Storage behind the seat can hold a large lunchbox and other items.



BUCKETS



**HYDRAULIC
HAMMERS**



**VIBRATORY
PLATES**

INCREASE YOUR PRODUCTIVITY AND PROFIT WITH CAT ATTACHMENTS

You can easily expand the performance of your machine by using Cat attachments. Each Cat attachment is designed to fit the weight and horsepower of the Cat excavator for improved performance, safety, and stability.

When you buy Cat equipment, you're getting so much more than the machine. You're also getting the support of a best-in-class dealer network backed by a range of flexible solutions, technology, tools, and more. It's all about support that's built around your success.

GET MORE THAN A MACHINE



- + Customer value agreements (CVA)
- + Cost-saving service and repair options
- + Quality parts and precision components
- + Financing solutions
- + Rental and used equipment

VALUE MADE EASY

A Cat customer value agreement (CVA) starts with hassle-free maintenance featuring genuine Cat parts right on schedule. Security of expert dealer support through an equipment protection plan (EPP) can be included to minimize surprise costs on covered repairs. Equipment health management provides you with machine alerts and information, as well as inspections and fluid health monitoring to give you more peace of mind. Hassle-free ownership simply means all elements of your CVA are part of one agreement that can be included in your monthly machine payment.

TECHNICAL SPECIFICATIONS

ENGINE		
Engine Model	Cat® C4.4	
Engine Power ISO 14396	110.1 kW	148 hp
ISO 14396 (DIN)	150 hp (metric)	
Net Power ISO 9249	105.6 kW	142 hp
ISO 9249 (DIN)	144 hp (metric)	
Bore	105 mm	4 in
Stroke	127 mm	5 in
Displacement	4.4 L	269 in³

- Meets China's National Stage IV Non-road Emission Standards.
- Advertised power is tested per the specified standard in effect at the time of manufacture.
- Net power advertised is the power available at the flywheel when the engine is equipped with fan, air intake system, exhaust system, and alternator.

HYDRAULIC SYSTEM		
Main System – Maximum Flow – Implement	429 L/min	113.4 gal/min
Maximum Pressure – Equipment – Normal	35 000 kPa	5,075 psi
Maximum Pressure – Travel	35 000 kPa	5,075 psi
Maximum Pressure – Swing	25 000 kPa	3,625 psi

SWING MECHANISM		
Swing Speed	11.1 rpm	
Maximum Swing Torque	74 kN·m	54,875 lbf·ft

WEIGHTS		
Operating Weight	19800 kg	43650 lb
Standard undercarriage, Reach boom, R2.7 (8'9") stick, General Duty (GD) 0.93 m³ (1.22 yd³) bucket, 600 mm (24") triple grouser shoes, and 3600 kg (7,940 lb) counterweight.		

SERVICE REFILL CAPACITIES		
Fuel Tank	390 L	103 gal
Cooling System	24.5 L	6.5 gal
Engine Oil (with filter)	15 L	4 gal
Swing Drive	5.5 L	1.5 gal
Final Drive (each)	4.5 L	1.2 gal
Hydraulic System (including tank)	218 L	57.6 gal
Hydraulic Tank (including suction pipe)	115 L	30.4 gal

DIMENSIONS		
Boom	Reach 5.7 m (18'8")	
Stick	Reach 2.7 m (8'9")	
Bucket	0.93/1.00 m³	
Shipping Height (top of cab)	2950 mm	9.7 ft
Handrail Height	3010 mm	9.9 ft
Shipping Length	9570 mm	31.4ft
Tail Swing Radius	2830 mm	9.3ft
Counterweight Clearance	1040 mm	3.4 ft
Ground Clearance	460 mm	1.5ft
Track Length	4080 mm	13.4ft
Length to Center of Rollers	3270 mm	10.7ft
Track Gauge	2200 mm	7.2ft
Transport Width – 600 mm (24") shoes	2800 mm	9.2ft

WORKING RANGES AND FORCES		
Boom	Reach 5.7 m (18'8")	
Stick	Reach 2.7 m (8'9")	
Bucket	0.93/1.00 m³	
Maximum Digging Depth	6430mm	21.1ft
Maximum Reach at Ground Level	9580mm	31.4ft
Maximum Cutting Height	9290 mm	30.5ft
Maximum Loading Height	6450 mm	21.2ft
Minimum Loading Height	2460 mm	8.1ft
Maximum Depth Cut for 2440 mm (8'0") Level Bottom	6250 mm	20.5ft
Maximum Vertical Wall Digging Depth	5510 mm	18.1ft
Minimum Working Equipment Radius	3680 mm	12.1ft
Bucket Digging Force (ISO)	130 kN	30597 lbf
Stick Digging Force (ISO)	106 kN	23897 lbf

STANDARD & OPTIONAL EQUIPMENT

Standard and optional equipment may vary. Consult your Cat dealer for details.

BOOMS & STICKS	STANDARD	OPTIONAL
5.7 m (18'8") Reach boom	•	
2.7 m (8'10") Reach stick	•	
CAB	STANDARD	OPTIONAL
Sound suppressed with viscous mounts	•	
High-resolution 203 mm (8") LCD touchscreen monitor	•	
Mechanically adjustable seat with headrest and armrest	•	
51 mm (2") orange seat belt	•	
Automatic bi-level air conditioner	•	
Keyless push-to-start engine control	•	
Fixed left-side console	•	
1-button joystick	•	
3-button joystick		•
Bluetooth® radio with USB/Aux ports	•	
24V DC outlet	•	
Cup holder and storage compartments	•	
70/30 tempered glass windshield	•	
Rear window emergency exit	•	
Upper radial wiper with washer	•	
Openable steel hatch	•	
LED dome light	•	
Washable floor mat	•	
ENGINE	STANDARD	OPTIONAL
Cat C4.4 single turbo diesel engine	•	
Two selectable modes: Power, smart	•	
Up to 4500 m (14,764 ft) altitude capability	•	
52°C (125°F) high-ambient cooling capability	•	
-25°C (-13°F) cold start capability	•	
Electric fuel priming pump	•	
Two-stage fuel filtration system	•	
Sealed double-element air filter with precleaner	•	
ELECTRICAL SYSTEM	STANDARD	OPTIONAL
950 CCA maintenance-free batteries (x2)	•	
LED chassis, and cab lights	•	
LED left-side boom light	•	
LED right-side boom light		•

HYDRAULIC SYSTEM	STANDARD	OPTIONAL
Electronic main control valve, hammer ready	•	
Back-to-back, electronically controlled pumps	•	
Boom and stick regeneration circuits	•	
Automatic hydraulic oil warmup	•	
Automatic two-speed travel	•	
Hammer lines		•
Hammer return filter		•
High performance hydraulic return filter	•	
SAFETY AND SECURITY	STANDARD	OPTIONAL
Anti-skid plating with countersunk bolts	•	
Auto hammer stop	•	
Operator Protective Guards (OPG) with matching lights		•
Handrail and handhold	•	
Lockable external tool/storage box	•	
Ground-level secondary engine shutoff switch	•	
Lockable disconnect switch	•	
Signaling/warning horn	•	
Right-hand-side edge mirror	•	
Rearview camera ¹		•
Right-hand-side camera ²		•
Rollover protective structure (ROPS)		•
Travel alarm ³		•
Swing alarm		•
SERVICE AND MAINTENANCE	STANDARD	OPTIONAL
Grouped engine oil and fuel filters	•	
Scheduled Oil Sampling (S•O•S SM) ports	•	
UNDERCARRIAGE AND STRUCTURES	STANDARD	OPTIONAL
600 mm (24") triple grouser track shoes		•
790 mm (31") triple grouser track shoes		•
Grease lubricated track link	•	
Center track guiding guard	•	
Bottom guards	•	
Travel motor guards	•	
3600 kg (7,940 lb) counterweight	•	
Tie-down points	•	