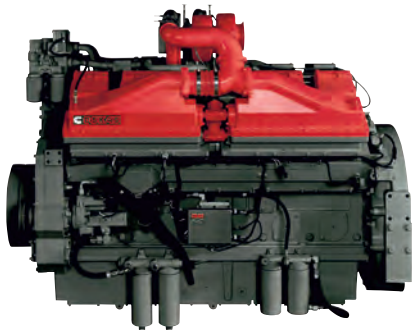


# GET READY FOR MORE. EVERY TON.

QSK45 ENGINES FOR  
MINING APPLICATIONS.



FOR  
A WORLD  
THAT'S  
ALWAYS ON™



# QSK45

## MORE INNOVATION.

Continuous improvement is a hallmark of Cummins engineering. With hundreds of thousands of hours logged on the QSK45, this engine has proven its reliability and durability across many demanding applications. The engine's package of innovative and upgraded components demonstrates its robust design and ability to deliver increased productivity. At the same time, we've created innovative technology solutions that meet varying degrees of emissions compliance in every corner of the globe.

## MORE ROBUST FEATURES.

- A state-of-the-art combustion control system is managed by a high-speed Electronic Control Module (ECM)
- The High-Pressure Injection fuel system (HPI) allows for tailored calibrations for unique equipment and work environment requirements
- The heavy-duty front geartrain has low gear loading and high fatigue strength, for dependable service
- Two-stage oil filters from Cummins Filtration provide three times more contaminant removal capacity than single-stage filters
- The Prelub™ system pressurizes the entire lube system before cranking, reducing friction and extending life-to-overhaul
- Centriguard™ centrifuge filters and the CENTINEL™ continuous oil replacement system lengthen service intervals and increase uptime

## MORE PERFORMANCE.

Cummins QSK45 engines share the proven performance of the QSK60 engine, with upward of 95 percent uptime in mining operations with load factors exceeding 40 percent. Superior engine availability, coupled with exceptional fuel economy, results in a lower cost-per-ton than other mining engines of its size. The QSK45 is found in large excavators, haul trucks and loaders from many major mining equipment manufacturers that require power output between 1,350 HP and 2,000 HP (1,007-1,491 kW).

## RATINGS

Engine Model	Advertised hp (kW) @ RPM	Peak Torque lb-ft (N•M) @ RPM
QSK45 2000	2000 (1491) @ 1900	5805 (7871) @ 1500
QSK45 1600	1600 (1193) @ 1900	5,042 (6836) @ 1500
QSK45 1500	1500 (1119) @ 1900	5,042 (6836) @ 1300
QSK45 1500	1500 (1119) @ 1800	4,727 (6409) @ 1500
QSK45 1487	1487 (1109) @ 1900	5,042 (6836) @ 1300
QSK45 1350	1350 (1007) @ 1800	4,525 (6135) @ 1300

\*All QSK45 ratings are available for use in nonregulated regions where engines are not subject to certification.

## SPECIFICATIONS

Engine Type	60° Vee 12-Cylinder	
Aspiration	Turbocharged and Aftercooled	
Displacement	2746 cu in	45 liters
Bore and Stroke	6.25 in x 7.48 in	159 mm x 190 mm
Oil System Capacity	192 U.S. qt	182 liters
Coolant Capacity	116.2 U.S. qt	110 liters
Length	94.1 in	2390 mm
Width	73.8 in	1875 mm
Height	59.1 in	1502 mm
Dry Weight	12815 lb	5813 kg
Wet Weight	13200 lb	5987 kg

## MORE CONFIDENCE.

QSK45 engines are backed by the best warranty in the industry, with full coverage for unlimited hours the first year, extending through 2 years or 2,000 hours, whichever comes first. Major-components coverage continues through the third year or 10,000 hours. Extended protection plans are available.

## MORE SUPPORT. EVERY CUSTOMER.

Cummins QSK45 engines are backed by the world's largest and most capable parts and service network, with over 600 authorized distributors around the globe. For more information, call 1-800-DIESELS™ (1-800-343-7357) or go to [cumminsengines.com](http://cumminsengines.com).

