

CUMMINS engine KTA50-G9

**PRELIMINARY
UNCHECKED**

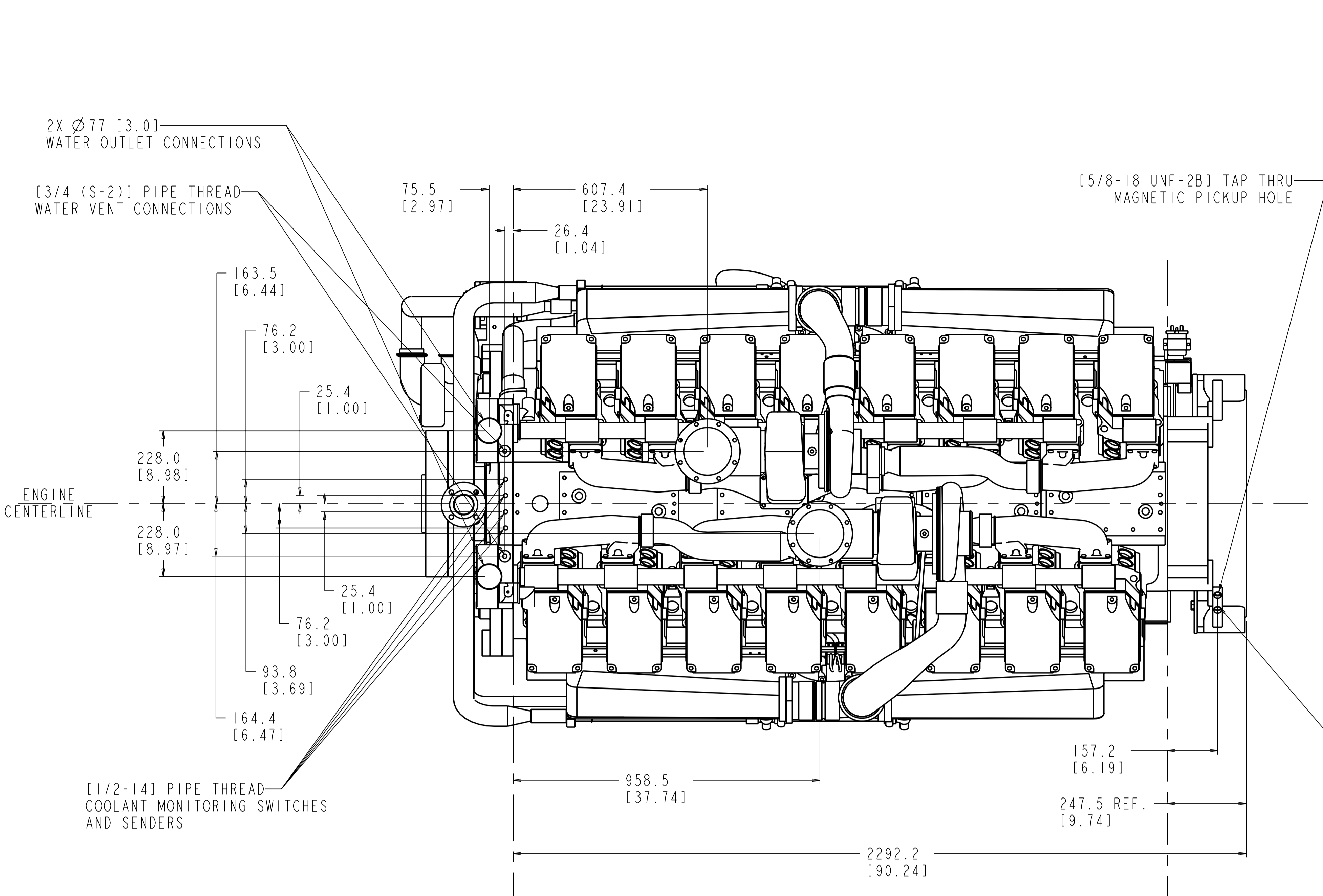
DO NOT SCALE THIS DRAWING
THIS DRAWING/DATA FILE (AND THE INFORMATION SHOWN THEREON) IS CONFIDENTIAL AND PROPRIETARY AND SHALL NOT BE USED, DISCLOSED TO OTHERS, OR REPRODUCED BY ANY MEANS FOR ANY PURPOSE IN HARD COPY FORM OR IN MACHINE READABLE FILES, WITHOUT WRITTEN CONSENT OF CUMMINS ENGINE COMPANY, INC., MARKETING CAD SERVICES DEPARTMENT.

LAST SECTION LETTER USED:	REF. DRAWING STANDARDS: ANSI Y14.5M ISO R1101	CUMMINS ENGINE COMPANY, INC.	
UNLESS OTHERWISE SPECIFIED DIMENSIONS ARE IN: MILLIMETERS () ARE IN: INCHES	ITEM NAME KTA50-G9	INSTALLATION DIAGRAM	ITEM NUMBER 3170459
DWN: MCS 12-27-00	APPD: E. KWASNIIEWSKI 12-27-00	SCALE: 1/16" & NOTED	ITEM CONTROL: MCS SHEET 1 OF 2

PRODUCT GRAPHICS FILE
NO ORIGINAL DRAWING EXISTS FOR THIS ITEM. THE ENGINEERING GRAPHICS DATA FOR THIS ITEM RESIDES IN THE PRODUCT GRAPHICS FILE AND IS CONTROLLED BY THE AGENCY DESIGNATED AS HAVING ITEM CONTROL.

ITEM NUMBER
3170459

REVISONS		DWN	APP'D
ZONE	REV	WCS	C
00	REQUEST NUMBER 1345	12-07-00	C. KWASNIEWSKI



LOC ENGINE SERVICE CONNECTIONS

F-8 ASPIRATION-AIR INTAKE AND EXHAUST SYSTEMS
AIR INLET CONNECTION: 140 [5.5] O.D. (2 REQ'D.)
EXHAUST OUTLET CONNECTION: 152 [6.0] O.D. (2 REQ'D.)

D-8 COOLING SYSTEM
F-3 ACP CONNECTION TO SUIT: SAE 5/8-18 X 45° FLANGE
F-2 WATER INLET CONNECTION: 127 [5.0] O.D.
F-9 WATER OUTLET CONNECTION: 76 [3.0] O.D. (2 REQ'D.)
F-2 WATER FILL AND MAKE-UP LINE: 38 [1.5] O.D. TUBE
F-9 WATER VENT LINE CONNECTION: 1/4 N.P.T.F.
(VENT LINE NOT TO EXCEED NO.5 FLEXIBLE HOSE SIZE)

C9/7 COOLANT DRAIN:
CYLINDER BLOCK: 1/4 N.P.T.F. (2 EACH SIDE)
WATER PUMP: 1/8 N.P.T.F.
F-2 WATER INLET CONNECTION: 3/4 N.P.T.F.
C8/63 AFTERCOOLER: 1/8 N.P.T.F. (2 EACH SIDE)
C9/62 COOLANT SUPPLY: 63.5 [2.5] O.D.
C9/62 COOLANT RETURN: 61.5 [2.42] O.D.

F-3 LUBRICATION SYSTEM
OIL DRAIN: 1-18NS-3B TH'D (ONE EACH SIDE)
BY-PASS OIL FILTER: MINIMUM OF NO. 6 FLEXIBLE HOSE SIZE
G-3 FILTER SUPPLY: 1/2 N.P.T.F.
F-1 FILTER RETURN: 1/2 N.P.T.F.

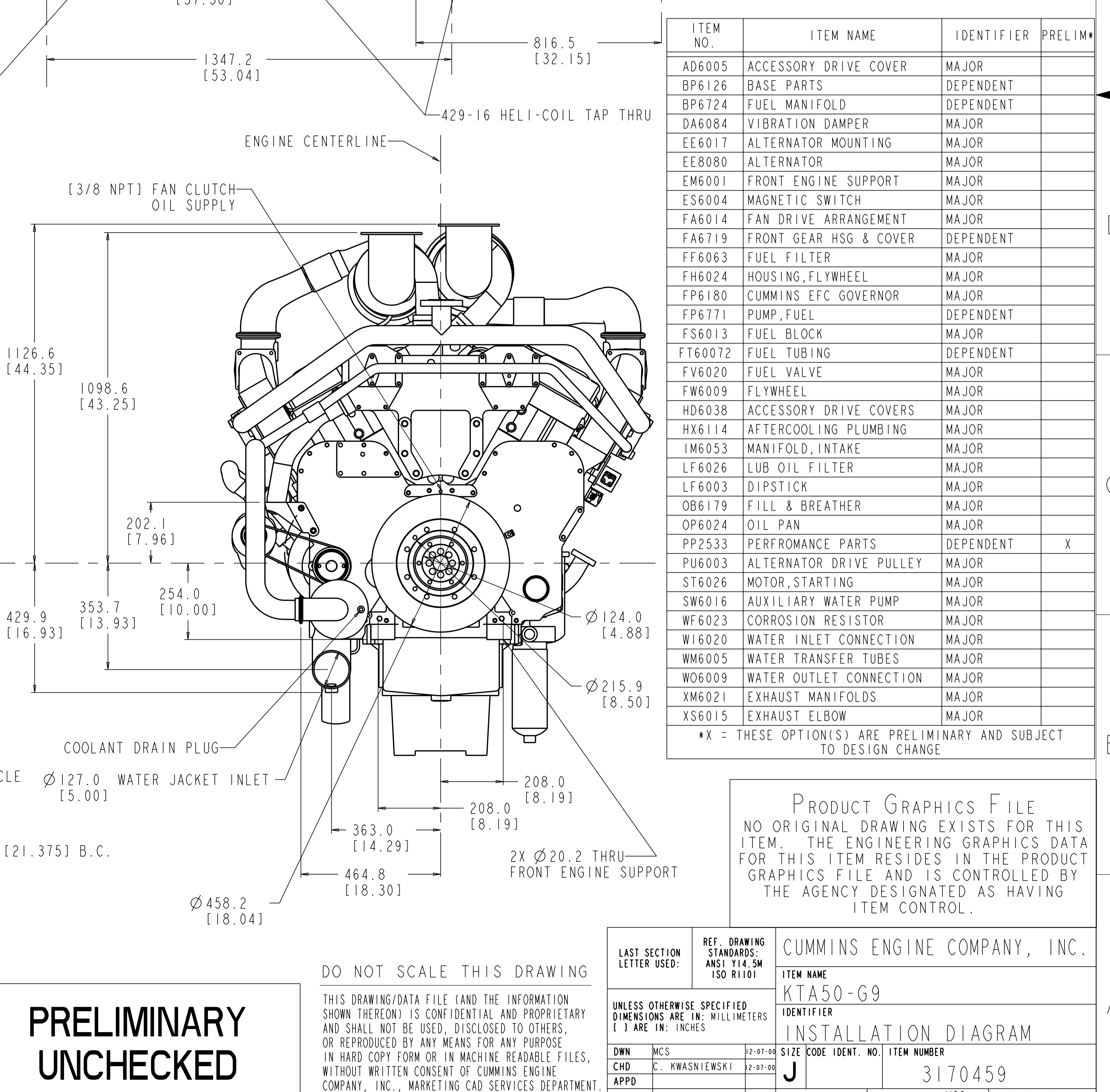
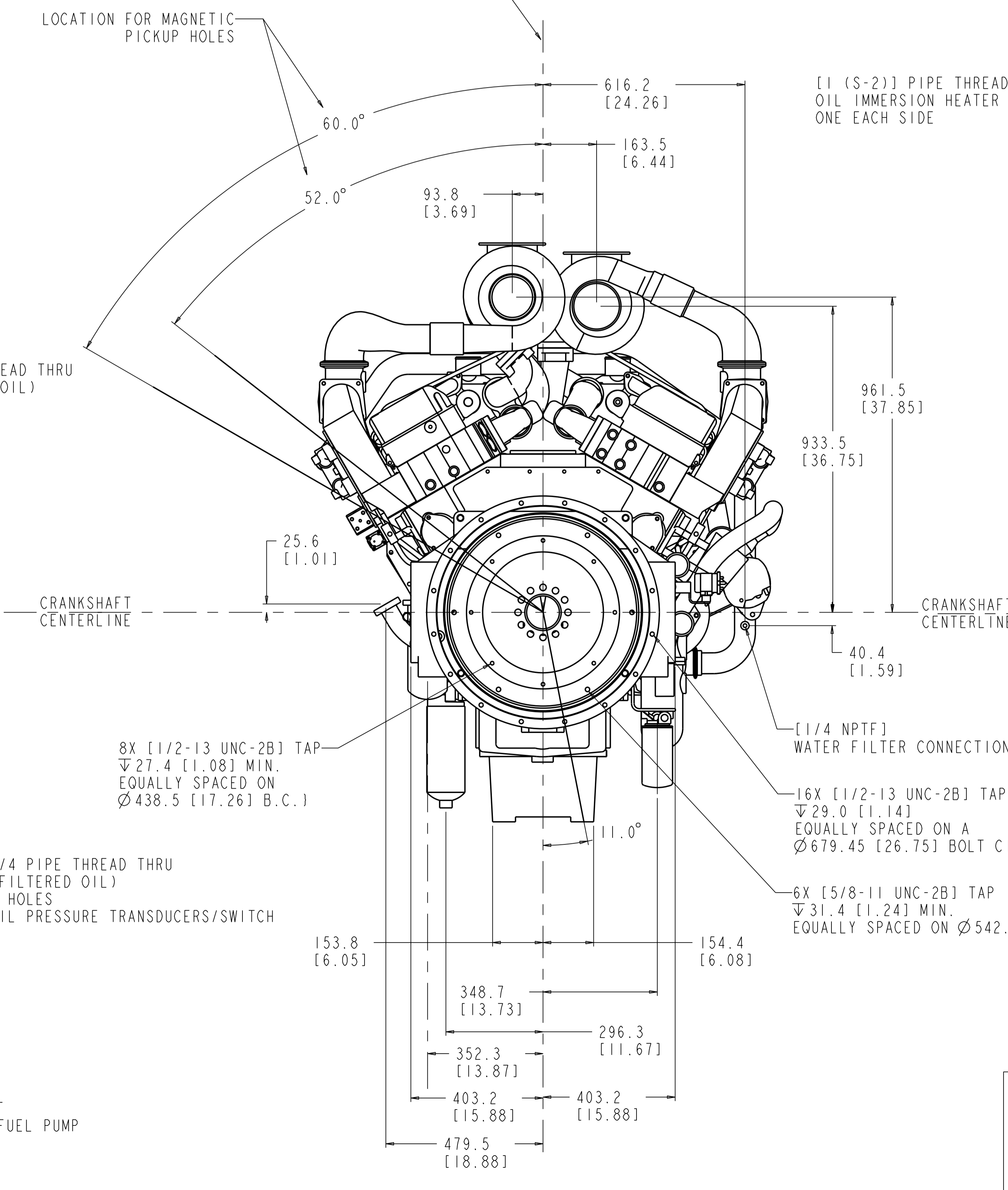
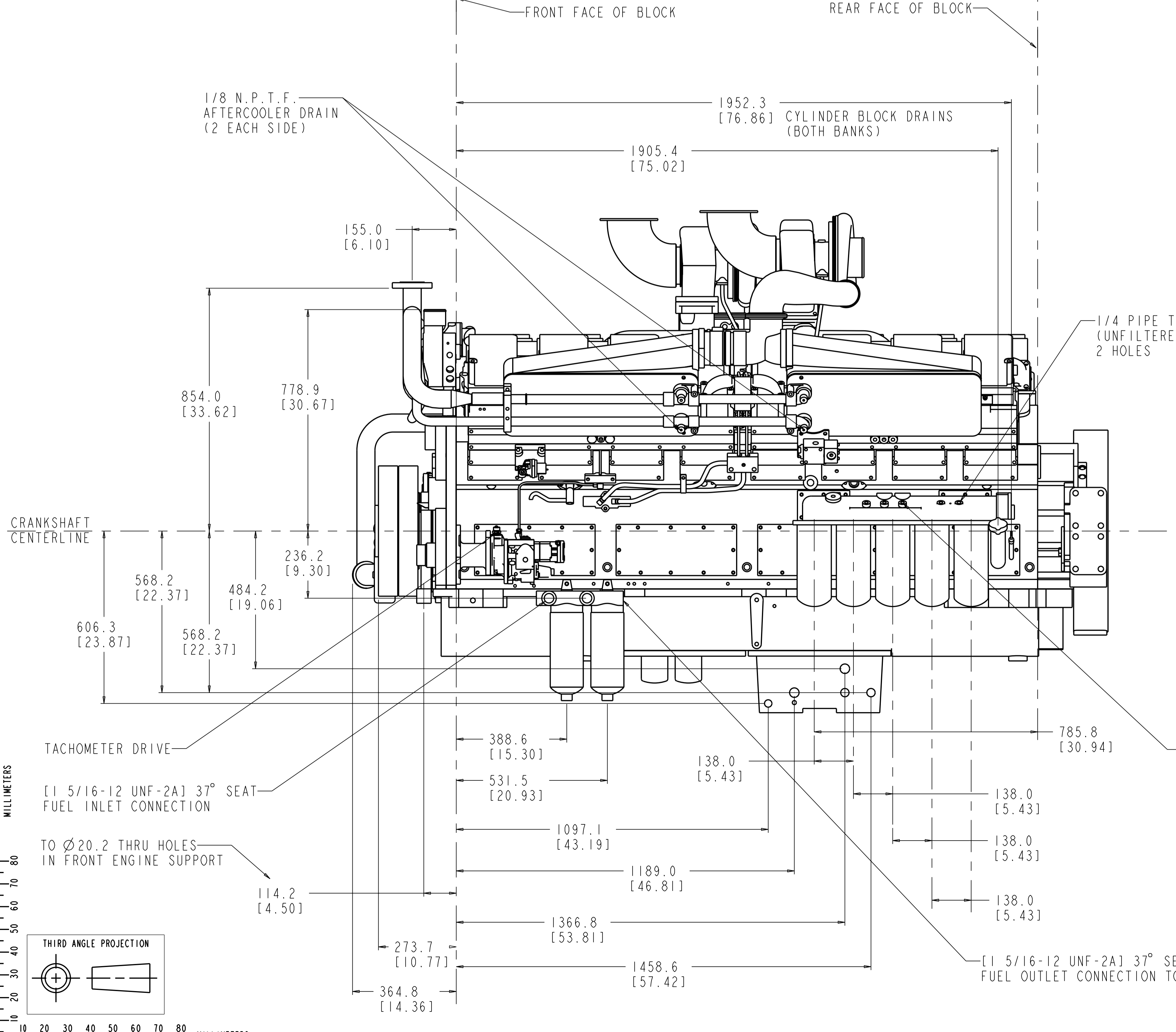
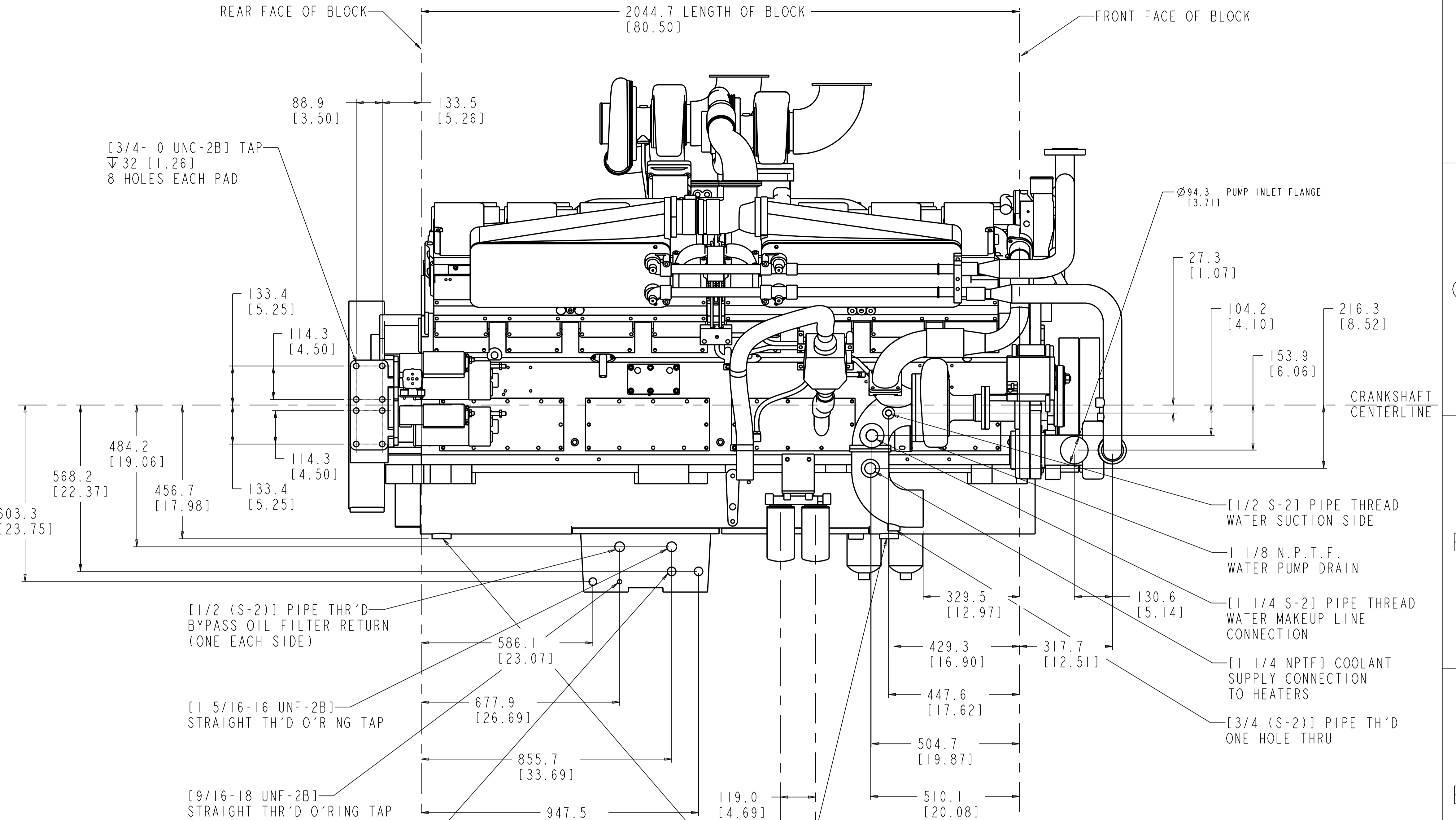
FUEL SYSTEM
B-9 FUEL INLET CONNECTION: 1 5/16-12UN-2A TH'D WITH 37° TIP
C-8 FUEL RETURN TO TANK: 7/8-14UN-2A TH'D WITH 37° TIP

ENGINE INSTRUMENTATION
C-8 OIL PRESSURE TRANSDUCER: 1/8 N.P.T.F. **
F-9 OIL TEMPERATURE TRANSDUCER: 1/2 N.P.T.F.
F-9 COOLANT TEMPERATURE TRANSDUCER: 1/2 N.P.T.F.

MONITORING SWITCHES:
C-8 LOW OIL PRESSURE: 1/8 N.P.T.F.
F-9 PRE-LOW OIL PRESSURE: 1/8 N.P.T.F. **
F-9 HIGH COOLANT TEMPERATURE: 1/2 N.P.T.F.
F-9 PRE-HIGH COOLANT TEMPERATURE: 1/2 N.P.T.F. **
C-9 LOW COOLANT TEMPERATURE: 1/2 N.P.T.F.
F-1 MAGNETIC PICKUP: 5/8-18 UNF-2B & 3/4-16 UNF-2B TH'D
C-9 TACHOMETER TAKE-OFF: SAE 7/8-18NS-2A TH'D WITH 4.75 [0.187] DRIVE TIP, 1/2 ENGINE SPEED (CLOCKWISE ROTATION)

STARTING AIDS
F-8 FLUID STARTING AID: 1/8 N.P.T.F. ** (2 EACH SIDE)
F-3 OIL IMMERSION HEATER: 1 N.P.T.F. (ONE EACH SIDE)
F-2 ENGINE COOLANT HEATER
C9/F3 HEATER SUPPLY: 1 1/4 N.P.T.F.
HEATER RETURN: 25 [1.0] O.D. (ONE EACH SIDE)

*TO BE CONNECTED TO ENGINE WATER INLET TUBE
**REDUCER REQUIRED



PRELIMINARY UNCHECKED