



# ZAXIS 54

An environment-friendly product adopts genuine imported engine with high quality and durability, and is equipped with high-pressure common rail electronic injection system and cooled EGR system and in combination with HITACHI HIOS III hydraulic system, significantly improving the fuel efficiency and operating performance. Its exhaust emission conforms to national stage III emission regulation. In addition, it features structural components with reinforced designs, more comfortable and safer operating space as well as more time-saving and easier maintenance work, making it an economical and environment-friendly machine bringing you with efficient performance.

"Earning more profits, keeping business up and achieving life value" are the eternal pursuit of customers, so the excavator used to realize the dream should be a productive, safe and reliable machine offering high profit, comfortable experience and cost-efficient and easy maintenance in any condition.

Now a new generation of the "powerful and economical" ZAXIS-5 series hydraulic excavators bearing these expectations are being presented to you, and we're sure that their comprehensive specification and impressive performance will help you explore your wonderful future and make your dream come true.

## More Production with Less Fuel · Environmental-friendly ▶P4-5

### Economical and efficient performance

- New eco-friendly engine with low fuel consumption and high power
- HITACHI HIOS III hydraulic system adopted to increase operating speed effectively
- Fuel efficiency increased by 15% in the ECO mode
- Digging force increased by 10% with power boosting device
- Attachment support system for enhanced operation efficiency

## Durability and Reliability ▶P6-7

### Powerful and durable configuration

- New engine with high reliability and durability
- Flat-bottom bucket with excellent durability
- X-beam frame with integrated welded structure
- D-section frame adopted for upperstructure

## Comfort and Safety · Convenient Operation ▶P8-9

### Comfortable and safe operating space makes operation fun and enjoyable

- Ample operating space and excellent visibility
- Suspension seat as a standard feature
- Cab with center pillar reinforced structure
- Neutral engine start system

## Easy Maintenance ▶P10-11

### User-friendly design for worry and labor saving

- Easy daily maintenance
- Easier cleaning around the engine
- SC painting protecting the surface from dirty

## Multi-function Monitor & e-Service ▶P12-13

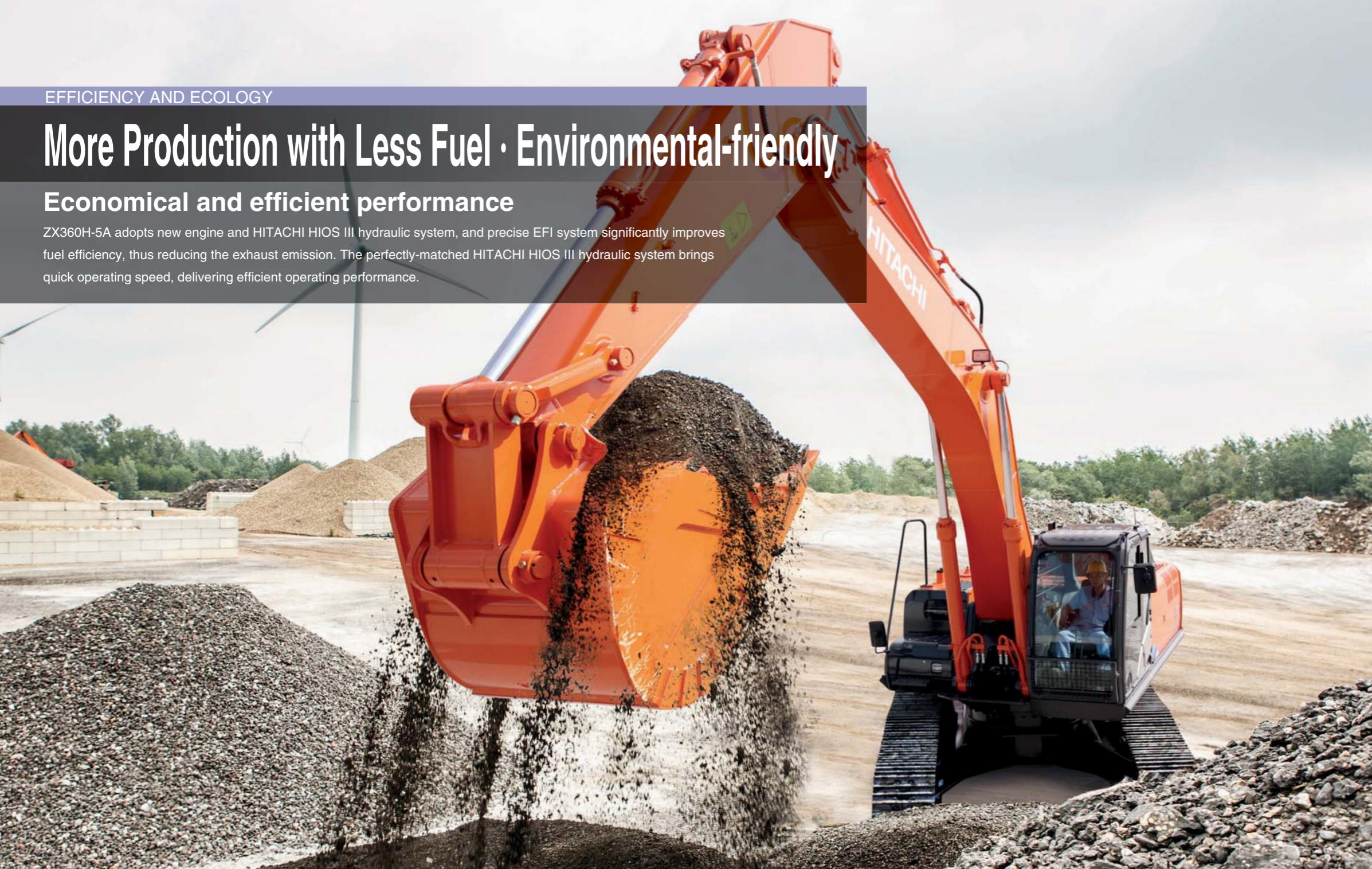
### Advanced machine management solution

- Multi-function monitoring system
- e-Service Owner's site
- ConSite

# More Production with Less Fuel · Environmental-friendly

## Economical and efficient performance

ZX360H-5A adopts new engine and HITACHI HIOS III hydraulic system, and precise EFI system significantly improves fuel efficiency, thus reducing the exhaust emission. The perfectly-matched HITACHI HIOS III hydraulic system brings quick operating speed, delivering efficient operating performance.



### New Eco-friendly Engine with Low Fuel Consumption and High Power

The genuine imported new engine with rated power of 190kW adopts high-pressure common rail electronic control fuel injection system and cooled EGR system, which delivers high power and low fuel consumption with its exhaust emission conforming to national stage III emission regulation.

■High-pressure common rail electronic control fuel injection system: It adopts high-pressure common rail and precisely controls the injection timing and injection quantity through electronic control for complete combustion of fuel, thus significantly improving fuel efficiency and reducing fuel consumption and emissions of exhausts such as black smoke etc.

■The cooled EGR system: It enables post-combustion of partial exhaust from the first combustion mixed with intake air, ensuring high power and reducing the emissions of air pollutants.

### Power Mode

PWR mode producing more with less time and fuel-saving ECO mode are available. Compared with PWR mode of conventional ZX360H-5G, fuel efficiency in ECO mode of ZX360H-5A is increased by 15%\* (\* value obtained from test conducted by HITACHI).

### Mighty Digging Force

ZX360H-5A boasts superior bucket and arm digging force. If spurred by the power boosting device, the digging force will instantly increase by 10%. The operator can feel the evident difference during excavation work, making it particularly suitable for digging hard foundations.

### Attachment Support System

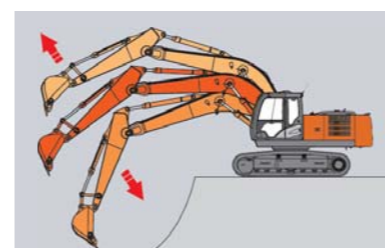
Valve switching and flow setting can be done by using the multi-function monitor, thus enhancing operation efficiency. In addition, the multi-function monitor displays operating hours of the breaker, which is convenient to determine replacement timing for hydraulic oil and filters.

### Swift Front Movements with HIOS III Hydraulic System

The new hydraulic system features a hydraulic boosting system and boom recirculation system based on the original hydraulic system, its efficient and precise hydraulic control enhances the work speed and enables quick and smooth combined operation. Whether for digging or loading operation, the machine can be operated easily.

\*HIOS: Human & Intelligent Operation System

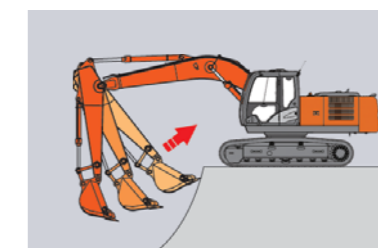
### Boom Recirculation System (Patented by HITACHI)



(Patent No.: ZL200480002169.5, patent classification: invention patent)

When the boom is lowered, hydraulic oil recirculates within the boom circuit assisted by boom weight. Therefore, the system delivers more pressure oil from the pump to the arm, thus significantly increasing arm speed during combined operation of arm and boom lowering. This feature will bring significant effect to the truck loading work.

### Hydraulic Boosting System (Patented by HITACHI)



(Patent No.: ZL200480010122.3, patent classification: invention patent)

The pressure oil which returns from the boom cylinder will be used to accelerate operation of the arm. This design significantly increases the arm roll-in speed.



## DURABILITY

# Durability and Reliability

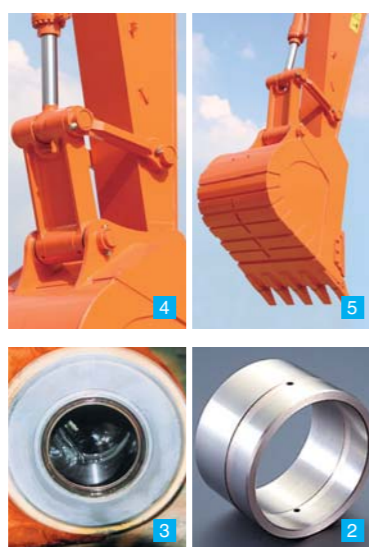
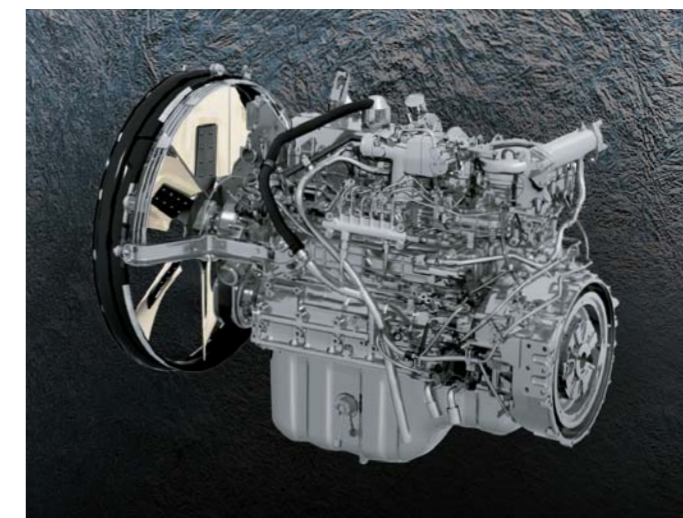
## Powerful and durable configuration

The service life of machine is closely connected with customers' profit. ZX360H-5A is equipped with high quality new engine with a rugged design. It also adopts structural components with reinforced designs and HITACHI patented technologies in many places to further improve durability, ensuring that the machine can operate steadily for a long time.



### New Engine with High Reliability and Durability

The new 5A engine developed with the concept of high durability and high output features a rugged design. The reinforced core components and optimized fuel circuit as well as multiple stage fuel filtration system allow the engine to deliver good performance. The advanced cooling system ensures engine in good running condition, and expansion tank enhances the exhaust performance of cooling circuit. The material with high durability is adopted around the engine, which keeps well cooling performance for a long period.



#### 1 H Arm and H Boom

The arm of ZX360H-5A is equipped with square bars and the boom employs thick plates, and both have breaker piping bases as a standard feature. (The BE model features a BE type arm)

#### 2 New HN Bushing (Patented by HITACHI)

New HN bushings are utilized at joint area of all front attachments for better lubrication and higher durability of front attachments. (Patent No.: ZL03803085.3, patent classification: invention patent)

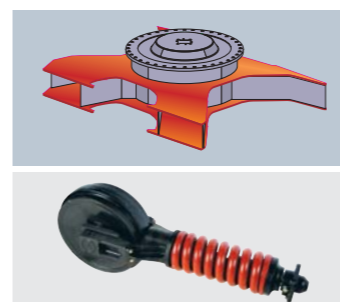
#### 3 WC Thermal Spraying

WC (Tungsten-Carbide) thermal spray is applied on the contact surface of the connection between the arm and the bucket, delivering significant reduction in wear of the contact surface and rattling.

#### 4 Welded Link A and Reinforced Link B (ZX360H-5A)

#### 5 Flat-Bottom Bucket with Excellent Durability

ZX360H-5A is equipped a 1.6m³ rock bucket as a standard feature (the BE model equipped with a 1.8m³ rock bucket as a standard feature) and the reinforced plates at bottom and side of bucket use wear plates with high performance, significantly enhancing the bucket durability.



#### 6 X-beam Frame with Integrated Welded Structure

Strength and stability of undercarriage are improved for higher durability.

#### 7 Integrated Idler and Adjuster

The integrated design effectively prevents idlers from detaching. The sliding area of idler bearing is increased for higher operation stability.

#### 8 Track Guard (3 on each side)

It can effectively protect lower rollers and prevent track links from detachment during steering.

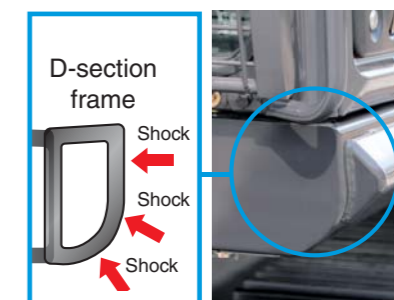
#### Undercover

The undercover of ZX360H-5A as a standard feature offers enhanced protection for parts of undercarriage including pipes and hoses and the center joint.



#### 9 Pre-cleaner

ZX360H-5A is equipped with a pre-cleaner as a standard feature which helps to extend the main air filter's service life and thus provides effective protection for the engine.



#### 10 Rugged Platform Frame

The upperstructure with D-section frame is added with a damage prevention plate (ZX360H-5A) to withstand fierce external shocks.

## COMFORT AND SAFETY

# Comfort and Safety · Convenient Operation

## Comfortable and safe operating space

It is important for the operator to operate machine comfortably and safely. ZX360H-5A offers ample operating space and excellent visibility. Numerous user-friendly designs to promote a satisfying operating experience.

## More Comfort and Safety Features



Large overhead window



Engine shut-off lever



Evacuation hammer



Travel direction mark



Control panel



LED room light



Large storage space



Glove compartment



## Ample Operating Space and Excellent Visibility

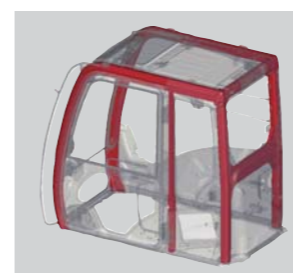
ZX360H-5A's cab offers plenty of legroom and excellent visibility. The height and width of cab entry are increased for improving ease of entry, and the legroom is ample. Front glass window has a great area, and large area glasses are used at the right side and lower side of the cab door for better visibility. Monitor switch and air conditioner switch etc. are concentrated on the right console for easier operation. Ample air conditioner vents are located reasonably for smooth and uniform air circulation inside the cab.

## Comfortable Suspension Seat

A suspension seat is provided as a standard feature, thus alleviating operation fatigue. The seat can be freely reclined and slid forward and backward. New slide rails are adopted to achieve less rattling. The cab rests on fluid-filled elastic mounts that absorb shocks and vibration to enhance operator comfort. The new pressurized cab keeps dust and particles from entering.

## Robust Cab

The machine features a cab with center pillar reinforced structure. A neutral engine start system is employed, which eliminates the risk of misoperation at the time of the operator getting on and off the machine to avoid possible dangers.



Cab with center pillar reinforced structure



Suspension seat



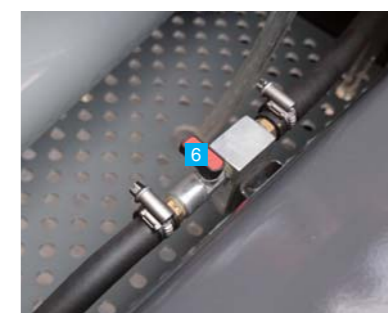
Neutral engine start system

## EASY MAINTENANCE

# Easy Maintenance

## User-friendly design for worry and labor saving

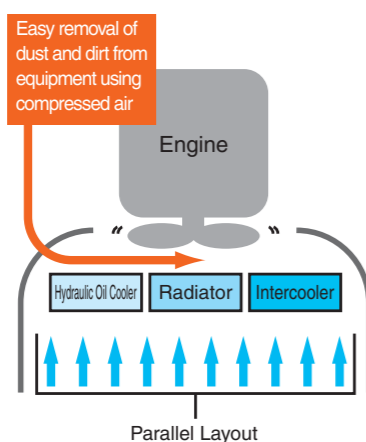
ZX360H-5A features a strategic arrangement of the daily maintenance parts to save customers' time and operation cost, making maintenance work more time-saving and easier by adopting electronic information management.



- |                     |                   |                                 |                  |
|---------------------|-------------------|---------------------------------|------------------|
| 1 Fuel main filter  | 3 Pilot filter    | 5 Electric fuel pump            | 7 Expansion tank |
| 2 Engine oil filter | 4 Fuel pre-filter | 6 Fuel tank water drainage cock |                  |



Insect-proof net



### Easy Daily Maintenance

Fuel main filter, fuel pre-filter, pilot filter, engine oil filter and electric fuel pump are concentrated inside the pump compartment. With the expansion tank and fully-sealed cooling circuit, there is no need to refill the coolant frequently. The fuel tank water drainage valve and engine oil discharge port are placed at convenient locations for daily drainage of water and engine oil. The fuel tank has a large cleaning port at the bottom, which effectively keeps fuel clean and simplifies inspection work. Plenty slip-resistant plates are positioned for safer maintenance.

### Maintenance Period

- Engine oil and engine oil filter: 500 h
- Hydraulic oil filter: 1,000 h
- Hydraulic oil: 5,000 h
- Fuel filter: 1,000 h

### Easier Cleaning Around the Engine

The hydraulic oil cooler, radiator and intercooler are laid out in parallel for easier cleaning around the engine. The air condenser is openable to simplify cleaning. The insect-proof net of a lockable design is placed at the external side of the air condenser and fuel cooler, which is convenient for dismantling and mounting work. The radiator which is equipped with a cover for cleaning on the top can be cleaned by blowing in compressed air.

### Easier Greasing for Adjuster

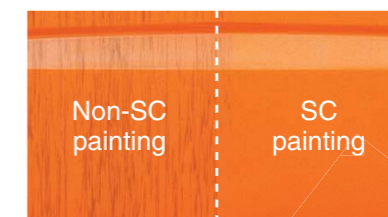
Track adjuster greasing ports are repositioned for easier greasing, and well protected from muck build-up and blockage.

### SC (Self Cleaning) Painting

The hydrophilic coating makes it hard for any dirt to adhere to the surface; even dirt adherence does happen, the dirt can be easily removed.



Greasing point for track adjuster



SC (Self Cleaning) Painting



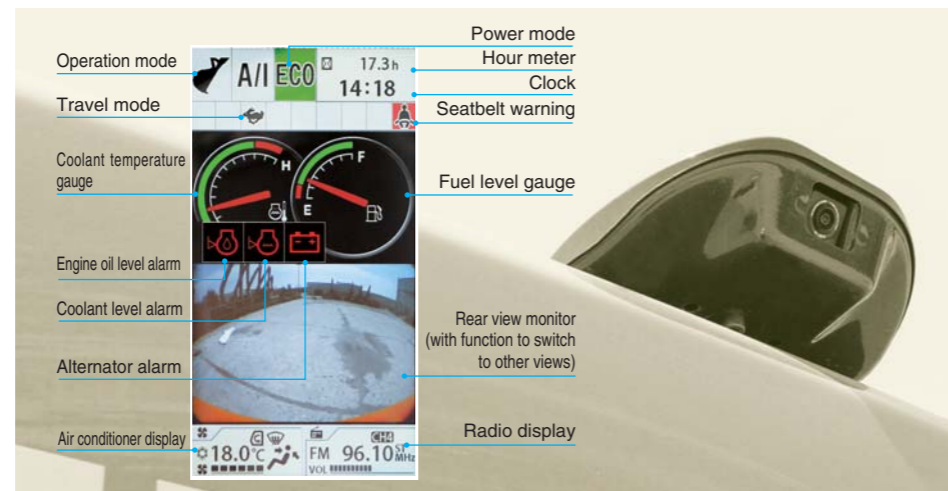
Air cleaner

# Multi-function Monitor & e-Service

## Advanced machine management solution

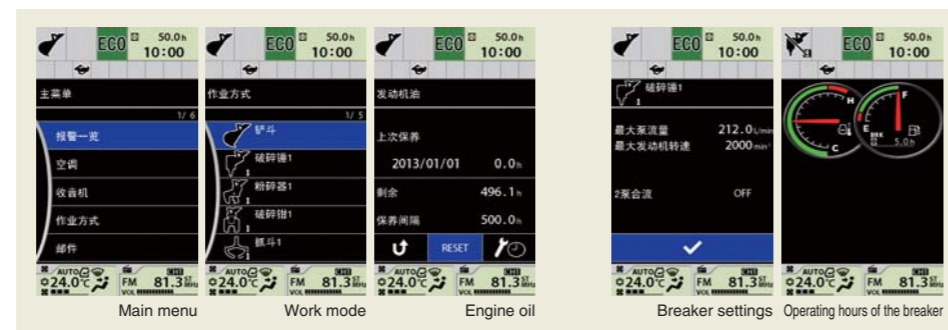
### Multi-function monitoring system

The new multi-function monitoring system comprises a 7-inch high-resolution color display and a multi-function controller. Menu items can be selected by the multi-function controller on the control panel. The color LCD panel is easily visible even in the daylight. The brightness of the screen can be switched between daytime mode and nighttime mode using the '0' on the ten-key touchpad. A rear view camera always displays the view behind the machine.



### Attachment Replacing Support System and Breaker Hour Meter

The operator can change over valves, adjust circuit flow, and check settings from the multi-function monitor. In addition, an extra hour meter on the multi-function monitor displays operating hours of the breaker, suggesting appropriate replacement timing for oil and filters.



### Multiple Languages Support

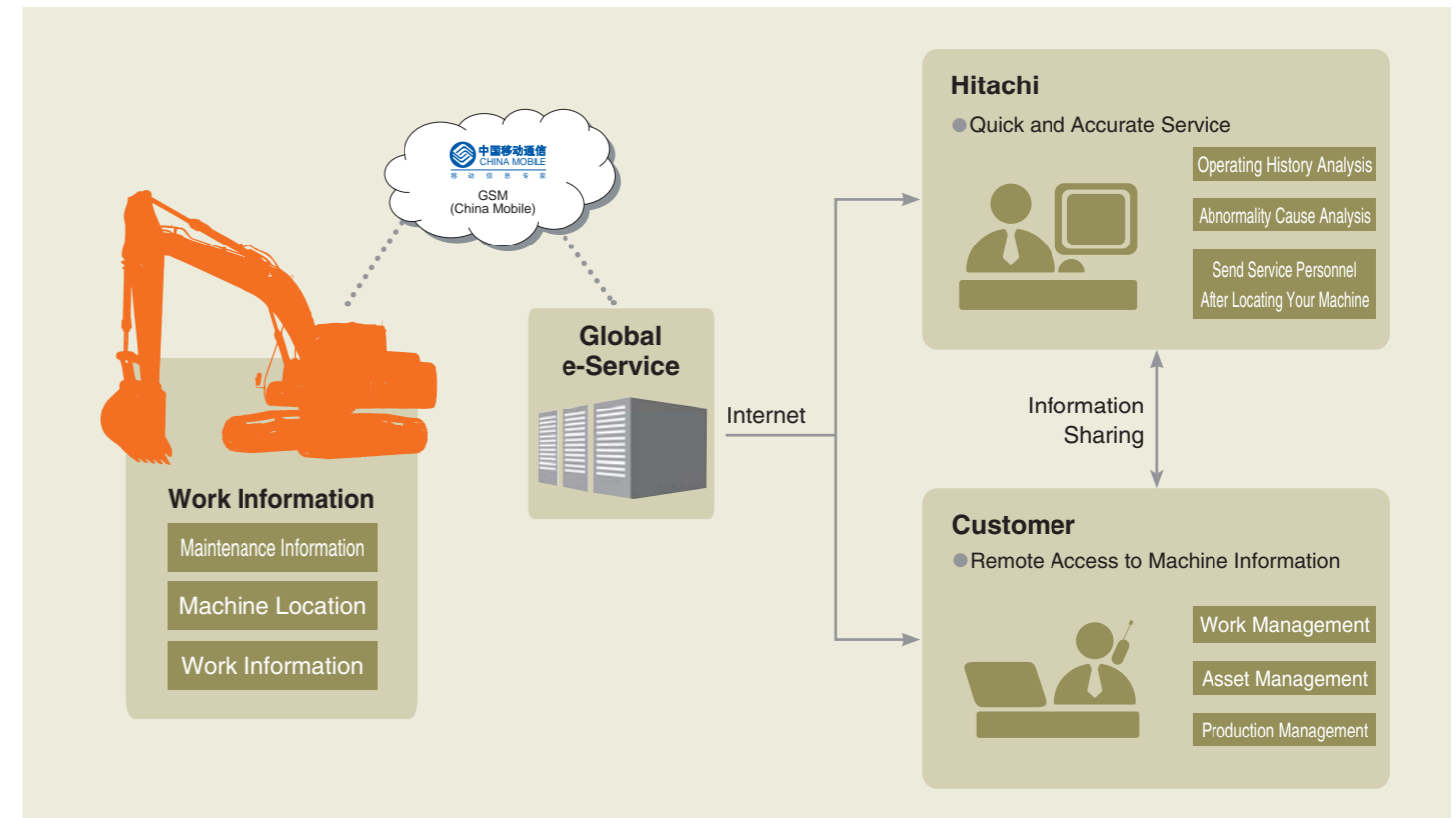
The new ZAXIS is programmed with 32 languages, making it possible to work in the language appropriate to the region in question in the event that the machine is transported to other countries.



## Remote Maintenance Management of Machine Information

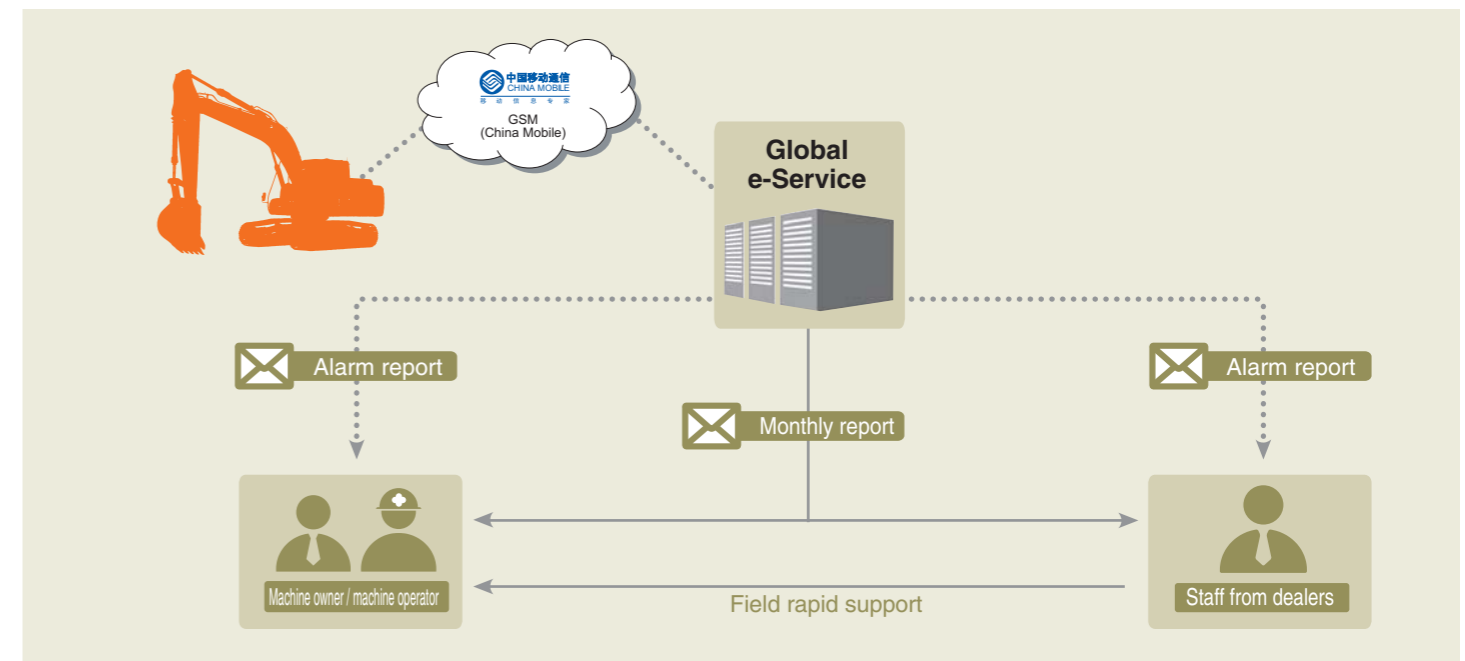
### e-Service Owner's Site

The onboard "e-Service Owner's site", assisted by a powerful information network, has led preventive servicing management to a new era of electronic information. HITACHI provides customers with shared machine information that is to be used as the judging factor for periodic inspection and maintenance. In case of machine abnormality, fault diagnosis can be made from alert information to find the cause. Also, technical personnel can be sent for field service timely. This contributes to quick and accurate service that reduces operational downtime caused by machine fault, ensuring normal operation of machine.

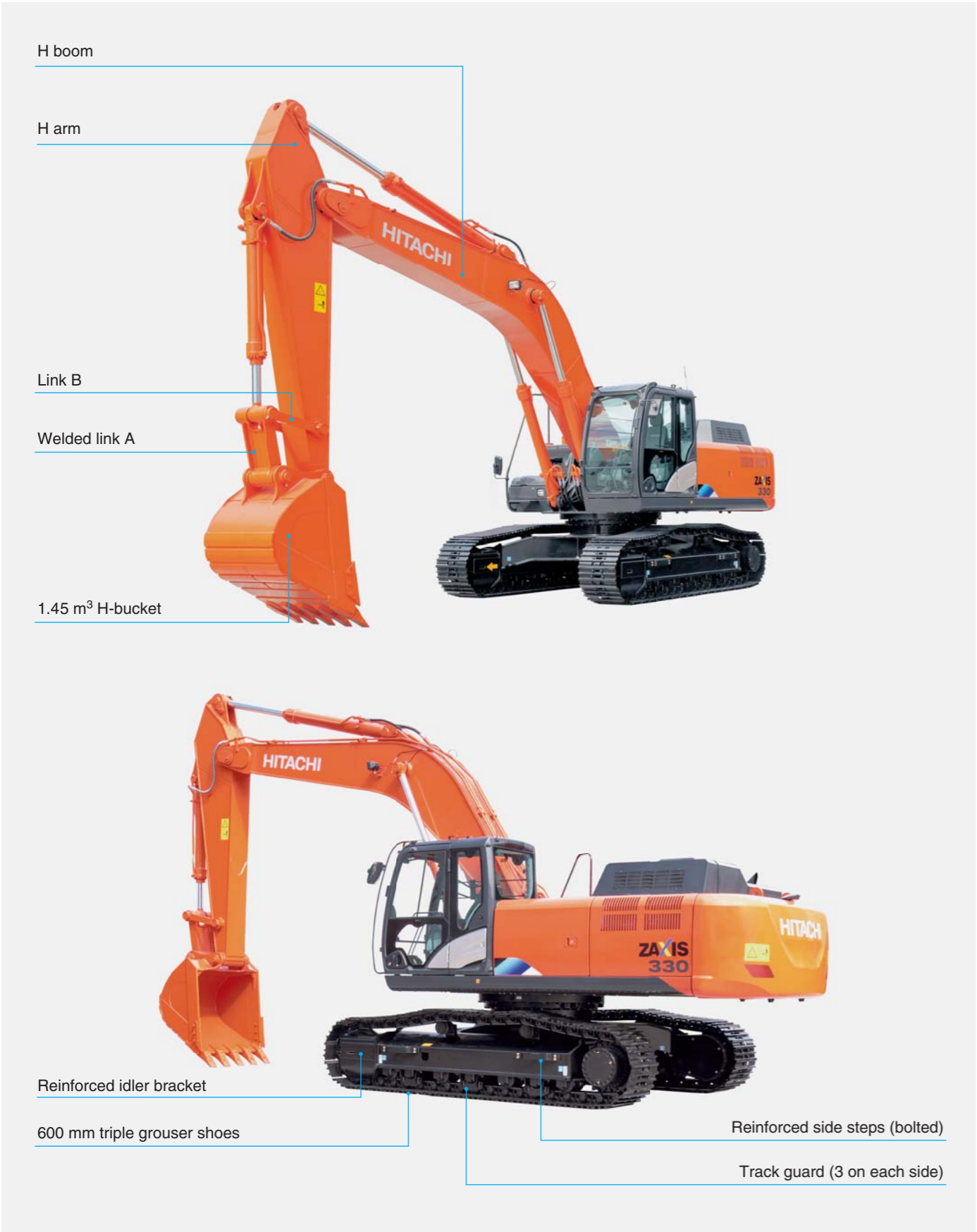


### ConSite

ConSite is a comprehensive response service system for construction site, which is developed based on Global e-Service platform. This system can monitor the operating state of machine remotely for 24 hours and send 'alarm report' and 'monthly report', which allows the customer to understand and control the daily operating state of machine timely, thus maximizing the utilization efficiency of machine. 'Alarm report' reduces the rate of failure occurrence and downtime by sending alarm notification at real time. 'Monthly report' helps analyze and improve machine conditions for enhancing operation efficiency by sending machine operating report each month.



ZAXIS330



| ENGINE                  |                                                            |
|-------------------------|------------------------------------------------------------|
| Model .....             | ISUZU GH-6HK1XKSA-01                                       |
| Type .....              | 4-cycle water-cooled, electric-controlled direct injection |
| Aspiration .....        | Turbocharged, intercooled                                  |
| No. of cylinders .....  | 6                                                          |
| Rated power             |                                                            |
| ISO 9249, net .....     | 190 kW (258 PS) at 1,900 min <sup>-1</sup> (rpm)           |
| SAE J1349, net .....    | 190 kW (258 PS) at 1,900 min <sup>-1</sup> (rpm)           |
| Maximum torque .....    | 1,037 Nm (106 kgfm) at 1,500 min <sup>-1</sup> (rpm)       |
| Piston displacement ... | 7.790 L                                                    |
| Bore × stroke .....     | 115 mm × 125 mm                                            |
| Batteries .....         | 2 × 12 V/128 Ah                                            |

| HYDRAULIC SYSTEM     |                                            |
|----------------------|--------------------------------------------|
| Hydraulic Pumps      |                                            |
| Main pumps .....     | 2 variable displacement axial piston pumps |
| Maximum oil flow ... | 2 × 288 L/min                              |
| Pilot pump .....     | 1 gear pump                                |
| Maximum oil flow ... | 30.2 L/min                                 |

|                  |                                                   |
|------------------|---------------------------------------------------|
| Hydraulic Motors |                                                   |
| Travel .....     | 2 variable displacement swash plate piston motors |
| Swing .....      | 1 swash plate piston motor                        |

|                         |                                     |
|-------------------------|-------------------------------------|
| Relief Valve Settings   |                                     |
| Implement circuit ..... | 34.3 MPa (350 kgf/cm <sup>2</sup> ) |
| Swing circuit .....     | 32.4 MPa (330 kgf/cm <sup>2</sup> ) |
| Travel circuit .....    | 34.8 MPa (355 kgf/cm <sup>2</sup> ) |
| Pilot circuit .....     | 3.9 MPa (40 kgf/cm <sup>2</sup> )   |
| Power boost .....       | 38.0 MPa (388 kgf/cm <sup>2</sup> ) |

|        | Quantity | Bore   | Rod diameter |
|--------|----------|--------|--------------|
| Boom   | 2        | 145 mm | 100 mm       |
| Arm    | 1        | 170 mm | 115 mm       |
| Bucket | 1        | 140 mm | 95 mm        |

| UPPERSTRUCTURE                                 |  |
|------------------------------------------------|--|
| Revolving Frame                                |  |
| D-section frame for resistance to deformation. |  |

|                                                                                                                                                                           |                              |
|---------------------------------------------------------------------------------------------------------------------------------------------------------------------------|------------------------------|
| Swing Device                                                                                                                                                              |                              |
| Swash plate piston motor with planetary reduction gear is bathed in oil. Swing circle is single-row. Swing parking brake is of a spring-set/hydraulic-released disc type. |                              |
| Swing speed .....                                                                                                                                                         | 10.7 min <sup>-1</sup> (rpm) |
| Swing torque .....                                                                                                                                                        | 120 kNm (12,200 kgfm)        |

|                                                                                       |  |
|---------------------------------------------------------------------------------------|--|
| Cab                                                                                   |  |
| Independent spacious cab, 1005 mm wide by 1675 mm high, conforming to ISO* standards. |  |
| *International Organization for Standardization                                       |  |

| WEIGHTS AND GROUND PRESSURE |                  |            |                                 |               |               |                  |                                    |
|-----------------------------|------------------|------------|---------------------------------|---------------|---------------|------------------|------------------------------------|
|                             | Track shoe width | Arm length | Bucket capacity (ISO heaped)    | Bucket weight | Counterweight | Operating weight | Ground pressure                    |
| ZX330-5A                    | 600 mm           | 3.2 m      | 1.45 m <sup>3</sup> H type      | 1,500 kg      | 6,350 kg      | 32,700 kg        | 66 kPa (0.67 kgf/cm <sup>2</sup> ) |
| ZX360H-5A                   | 600 mm           | 3.2 m      | 1.60 m <sup>3</sup> rock bucket | 1,815 kg      | 6,900 kg      | 34,200 kg        | 69 kPa (0.70 kgf/cm <sup>2</sup> ) |
| ZX360H-5A (BE)              | 600 mm           | 2.67 m     | 1.80 m <sup>3</sup> rock bucket | 1,821 kg      | 6,900 kg      | 34,200 kg        | 69 kPa (0.70 kgf/cm <sup>2</sup> ) |

| Undercarriage                                                                                                         |  |
|-----------------------------------------------------------------------------------------------------------------------|--|
| Tracks                                                                                                                |  |
| Heat-treated connecting pins with dirt seals. Hydraulic (grease) track adjusters with shock-absorbing recoil springs. |  |

|                                           |    |
|-------------------------------------------|----|
| Numbers of Rollers and Shoes on Each Side |    |
| Upper rollers .....                       | 2  |
| Lower rollers .....                       | 7  |
| Track shoes .....                         | 45 |
| Track guides .....                        | 3  |

|                                                                |                     |
|----------------------------------------------------------------|---------------------|
| Travel Device                                                  |                     |
| Each track is driven by 2-speed axial piston motor.            |                     |
| Parking brake is of a spring-set/hydraulic-released disc type. |                     |
| Automatic transmission system: High-Low.                       |                     |
| Travel speeds .....                                            | High: 0 to 5.0 km/h |
|                                                                | Low : 0 to 3.2 km/h |

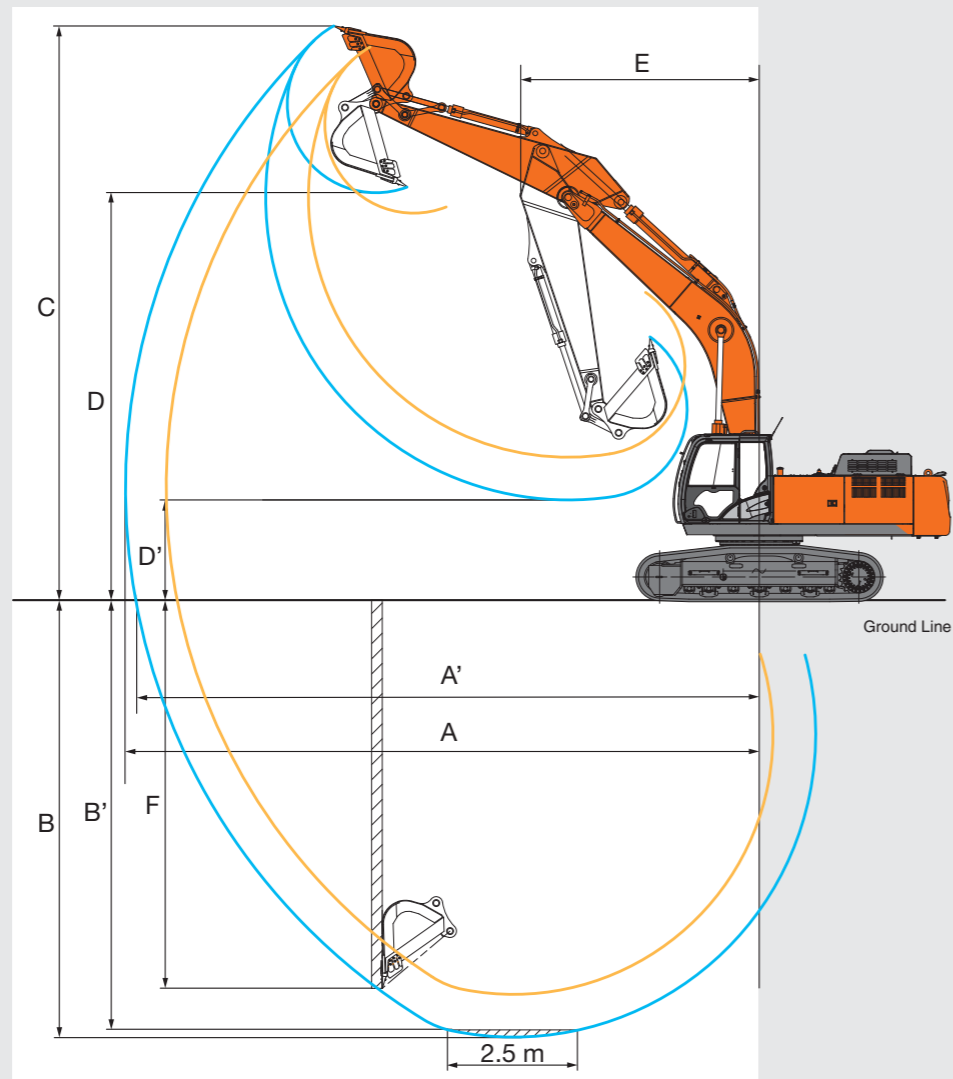
|                            |                            |
|----------------------------|----------------------------|
| Maximum traction force ... | 298 kN (30,400 kgf)        |
| Gradeability .....         | 70% (35 degree) continuous |

| SERVICE REFILL CAPACITIES       |        |
|---------------------------------|--------|
| Fuel tank .....                 | 630 L  |
| Engine coolant .....            | 35 L   |
| Engine oil .....                | 41 L   |
| Swing device .....              | 15.7 L |
| Travel device (each side) ..... | 9.2 L  |
| Hydraulic system .....          | 340 L  |
| Hydraulic oil tank .....        | 180 L  |

| BUCKET AND ARM DIGGING FORCES          |                     |                     |
|----------------------------------------|---------------------|---------------------|
| Arm length                             | 2.67 m              | 3.2 m               |
| Maximum bucket diggingforce* ISO       | 246 kN (25,100 kgf) | 246 kN (25,100 kgf) |
| Maximum bucket diggingforce* SAE: PCSA | 214 kN (21,800 kgf) | 214 kN (21,800 kgf) |
| Maximum arm crowdforce* ISO            | 222 kN (22,600 kgf) | 185 kN (18,900 kgf) |
| Maximum arm crowdforce* SAE: PCSA      | 213 kN (21,700 kgf) | 177 kN (18,100 kgf) |

\* At power boost

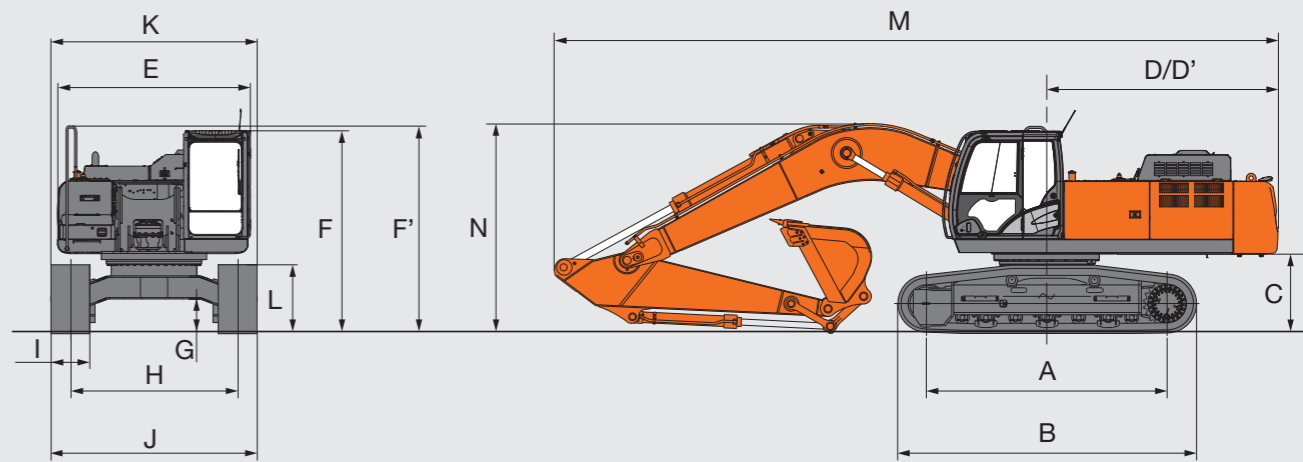
WORKING RANGES



| Arm length                            | 2.67 m | 3.20 m |
|---------------------------------------|--------|--------|
| A Max. digging reach                  | 10,570 | 11,100 |
| A' Max. digging reach (on ground)     | 10,360 | 10,890 |
| B Max. digging depth                  | 6,840  | 7,380  |
| B' Max. digging depth for 2.5 m level | 6,640  | 7,210  |
| C Max. cutting height                 | 9,990  | 10,360 |
| D Max. dumping height                 | 6,940  | 7,240  |
| D' Min. dumping height                | 3,210  | 2,680  |
| E Min. swing radius                   | 4,610  | 4,460  |
| F Max. vertical wall digging depth    | 5,510  | 6,420  |

Excluding track shoe lug

DIMENSIONS



|                                            | ZX330-5A | ZX360H-5A | ZX360H-5A (BE) |
|--------------------------------------------|----------|-----------|----------------|
| A Distance between tumblers                | 3,730    | 3,730     | 3,730          |
| B Undercarriage length                     | 4,640    | 4,650     | 4,650          |
| * C Counterweight clearance                | 1,160    | 1,160     | 1,160          |
| D Rear-end swing radius                    | 3,590    | 3,590     | 3,590          |
| D' Rear-end length                         | 3,590    | 3,590     | 3,590          |
| E Overall width of upperstructure          | 2,990    | 3,070     | 3,070          |
| F Overall height of cab                    | 3,160    | 3,160     | 3,160          |
| F' Overall height of upperstructure        | 3,270    | 3,270     | 3,270          |
| * G Min. ground clearance                  | 500      | 500       | 500            |
| H Track gauge                              | 2,590    | 2,590     | 2,590          |
| I Track shoe width (triple grouser shoe)   | 600      | 600       | 600            |
| J Undercarriage width                      | 3,190    | 3,190     | 3,190          |
| K Overall width                            | 3,190    | 3,190     | 3,190          |
| * L Track height with triple grouser shoes | 1,070    | 1,070     | 1,070          |
| M Overall length                           | 11,220   | 11,220    | 11,350         |
| N Overall height of boom                   | 3,270    | 3,270     | 3,470          |

\* Excluding track shoe lug

● : Standard equipment      ○ : Optional equipment      — : N/A

|                                                                                  | ZX330-5A | ZX360H-5A | ZX360H-5A (BE) |
|----------------------------------------------------------------------------------|----------|-----------|----------------|
| ENGINE                                                                           |          |           |                |
| Air cleaner double filters                                                       | ●        | ●         | ●              |
| Auto idle system                                                                 | ●        | ●         | ●              |
| Integrated engine oil filter                                                     | ●        | ●         | ●              |
| Integrated fuel pre-filter with water separator                                  | ●        | ●         | ●              |
| Integrated fuel main filter                                                      | ●        | ●         | ●              |
| Electric fuel pump                                                               | ●        | ●         | ●              |
| Dry-type air filter with evacuator valve (with air filter restriction indicator) | ●        | ●         | ●              |
| ECO/PWR mode control                                                             | ●        | ●         | ●              |
| Engine warm-up device                                                            | ●        | ●         | ●              |
| Fan guard                                                                        | ●        | ●         | ●              |
| Pre-cleaner                                                                      | ○        | ●         | ●              |
| Insect-proof net                                                                 | ●        | ●         | ●              |
| Expansion tank                                                                   | ●        | ●         | ●              |
| 50 A alternator                                                                  | ●        | ●         | ●              |

| HYDRAULIC SYSTEM                     |   |   |   |
|--------------------------------------|---|---|---|
| Auto power lift                      | ● | ● | ● |
| Control valve with main relief valve | ● | ● | ● |
| Full-flow filter                     | ● | ● | ● |
| Pilot filter                         | ● | ● | ● |
| Power boost                          | ● | ● | ● |
| Suction filter                       | ● | ● | ● |
| One extra port for control valve     | ● | ● | ● |
| Work mode selector                   | ● | ● | ● |

|                                                                                      | ZX330-5A | ZX360H-5A | ZX360H-5A (BE) |
|--------------------------------------------------------------------------------------|----------|-----------|----------------|
| CAB                                                                                  |          |           |                |
| All-weather sound suppressed steel cab                                               | ●        | ●         | ●              |
| AM-FM radio with 2 speakers                                                          | ●        | ●         | ●              |
| Ashtray                                                                              | ●        | ●         | ●              |
| Auto control air conditioner                                                         | ●        | ●         | ●              |
| Storage                                                                              | ●        | ●         | ●              |
| Cab (Center pillar reinforced structure)                                             | ●        | ●         | ●              |
| Drink holder (hot & cool)                                                            | ●        | ●         | ●              |
| Electric double horn                                                                 | ●        | ●         | ●              |
| Engine shut-off lever                                                                | ●        | ●         | ●              |
| Evacuation hammer                                                                    | ●        | ●         | ●              |
| Fire extinguisher bracket                                                            | ●        | ●         | ●              |
| Floor mat                                                                            | ●        | ●         | ●              |
| Footrest                                                                             | ●        | ●         | ●              |
| Front window washer                                                                  | ●        | ●         | ●              |
| Windows on front, left and top sides can be opened                                   | ●        | ●         | ●              |
| Lower cab front guard                                                                | ○        | ●         | ●              |
| Glove compartment                                                                    | ●        | ●         | ●              |
| Hot & cool box                                                                       | ●        | ●         | ●              |
| Intermittent windshield wipers                                                       | ●        | ●         | ●              |
| Key cylinder light                                                                   | ●        | ●         | ●              |
| LED room light with door courtesy                                                    | ●        | ●         | ●              |
| Pilot control shut-off lever                                                         | ●        | ●         | ●              |
| Rear tray                                                                            | ●        | ●         | ●              |
| Seat belt                                                                            | ●        | ●         | ●              |
| Rubber radio antenna                                                                 | ●        | ●         | ●              |
| Mechanical suspension seat                                                           | ●        | ●         | ●              |
| Seat adjustment parts: backrest, armrest, height and angle, slide forward / backward | ●        | ●         | ●              |
| Short wrist control levers                                                           | ●        | ●         | ●              |
| 4 fluid-filled elastic mounts                                                        | ●        | ●         | ●              |
| 24 V cigarette lighter                                                               | ●        | ●         | ●              |

● : Standard equipment      ○ : Optional equipment      — : N/A

|                                                                                                                                                           | ZX330-5A | ZX360H-5A | ZX360H-5A (BE) |
|-----------------------------------------------------------------------------------------------------------------------------------------------------------|----------|-----------|----------------|
| MONITOR SYSTEM                                                                                                                                            |          |           |                |
| Alarm buzzers: overheating, engine oil pressure                                                                                                           | ●        | ●         | ●              |
| Alarms: overheating, engine warning, engine oil pressure, alternator, minimum fuel level, air filter restriction, etc.                                    | ●        | ●         | ●              |
| Display items: Coolant temperature gauge, oil level gauge, hour meter, work mode, auto idle, power mode, rear monitoring, radio and air conditioner, etc. | ●        | ●         | ●              |
| 32 languages selection                                                                                                                                    | ●        | ●         | ●              |

| LIGHTS           |   |   |   |
|------------------|---|---|---|
| 2 working lights | ● | ● | ● |
| Right boom light | ○ | ○ | ○ |

| UPPERSTRUCTURE                       |   |   |   |
|--------------------------------------|---|---|---|
| Fuel level float                     | ● | ● | ● |
| Hydraulic oil level gauge            | ● | ● | ● |
| Rear view camera                     | ● | ● | ● |
| Rear view mirror (right & left side) | ● | ● | ● |
| Swing parking brake                  | ● | ● | ● |
| Tool box                             | ● | ● | ● |
| Undercover                           | ● | — | — |
| 6.0 mm reinforced undercover         | — | ● | ● |
| Utility space                        | ● | ● | ● |
| 6,350 kg counterweight               | ● | — | — |
| 6,900 kg counterweight               | — | ● | ● |
| 2 × 128 Ah batteries                 | ● | ● | ● |

|                                                            | ZX330-5A | ZX360H-5A    | ZX360H-5A (BE) |
|------------------------------------------------------------|----------|--------------|----------------|
| UNDERCARRIAGE                                              |          |              |                |
| Bolt-mounted travel sprocket                               | ●        | ●            | ●              |
| Reinforced track links with pin seals                      | ●        | ●            | ●              |
| Reinforced lower flange                                    | ●        | ●            | ●              |
| Reinforced idler bracket                                   | ●        | ●            | ●              |
| Travel motor covers                                        | ●        | ●            | ●              |
| Travel parking brake                                       | ●        | ●            | ●              |
| 9.0 mm reinforced undercover                               | ○        | ●            | ●              |
| 3 track guides and 1 hydraulic track adjuster on each side | ●        | ●            | ●              |
| Upper and lower rollers                                    | ●        | ●            | ●              |
| 4 tie down hooks                                           | ●        | ●            | ●              |
| 600 mm triple grouser shoes                                | ●        | ● Reinforced | ● Reinforced   |
| Reinforced side step                                       | ●        | ●            | ●              |

| FRONT ATTACHMENTS                      |   |              |              |
|----------------------------------------|---|--------------|--------------|
| Centralized lubrication system         | ● | ●            | ●            |
| Dirt seal on all bucket pins           | ● | ●            | ●            |
| Flanged pin                            | ● | ●            | ●            |
| New HN bushing                         | ● | ●            | ●            |
| Reinforced resin thrust plate          | ● | ●            | ●            |
| Link B                                 | ● | ● Reinforced | ● Reinforced |
| Welded link A                          | ● | ●            | ●            |
| WC (tungsten-carbide) thermal spraying | ● | ●            | ●            |
| 3.2 m H-arm                            | ● | ●            | —            |
| 2.67 m BE-arm                          | — | —            | ●            |
| 6.4 m H-boom                           | ● | ●            | ●            |
| 1.45 m³ H-bucket                       | ● | ○            | —            |
| 1.6 m³ rock bucket                     | — | ●            | ○            |
| 1.6 m³ wide rock bucket                | — | ○            | ○            |
| 1.62 m³ H-bucket                       | ○ | —            | —            |
| 1.8 m³ rock bucket                     | — | —            | ●            |

| MISCELLANEOUS                        |   |   |   |
|--------------------------------------|---|---|---|
| Lockable fuel refilling cap          | ● | ● | ● |
| Lockable machine cover               | ● | ● | ● |
| Onboard information controller       | ● | ● | ● |
| Skid-resistant plates and handrails  | ● | ● | ● |
| Standard tool kit                    | ● | ● | ● |
| Travel direction mark on track frame | ● | ● | ● |
| e-Service Owner's Site               | ● | ● | ● |
| ConSite                              | ● | ● | ● |