



品质 改变 世界



www.wme.cn

# SY235H-SA

Rated power: 128kW/2000rpm

Total weight: 23000kg

Standard bucket capacity: 1.35m<sup>3</sup>





# 三一中型挖掘机

智控双全身手不凡



[www.wme.cn](http://www.wme.cn)

# Technical Specifications

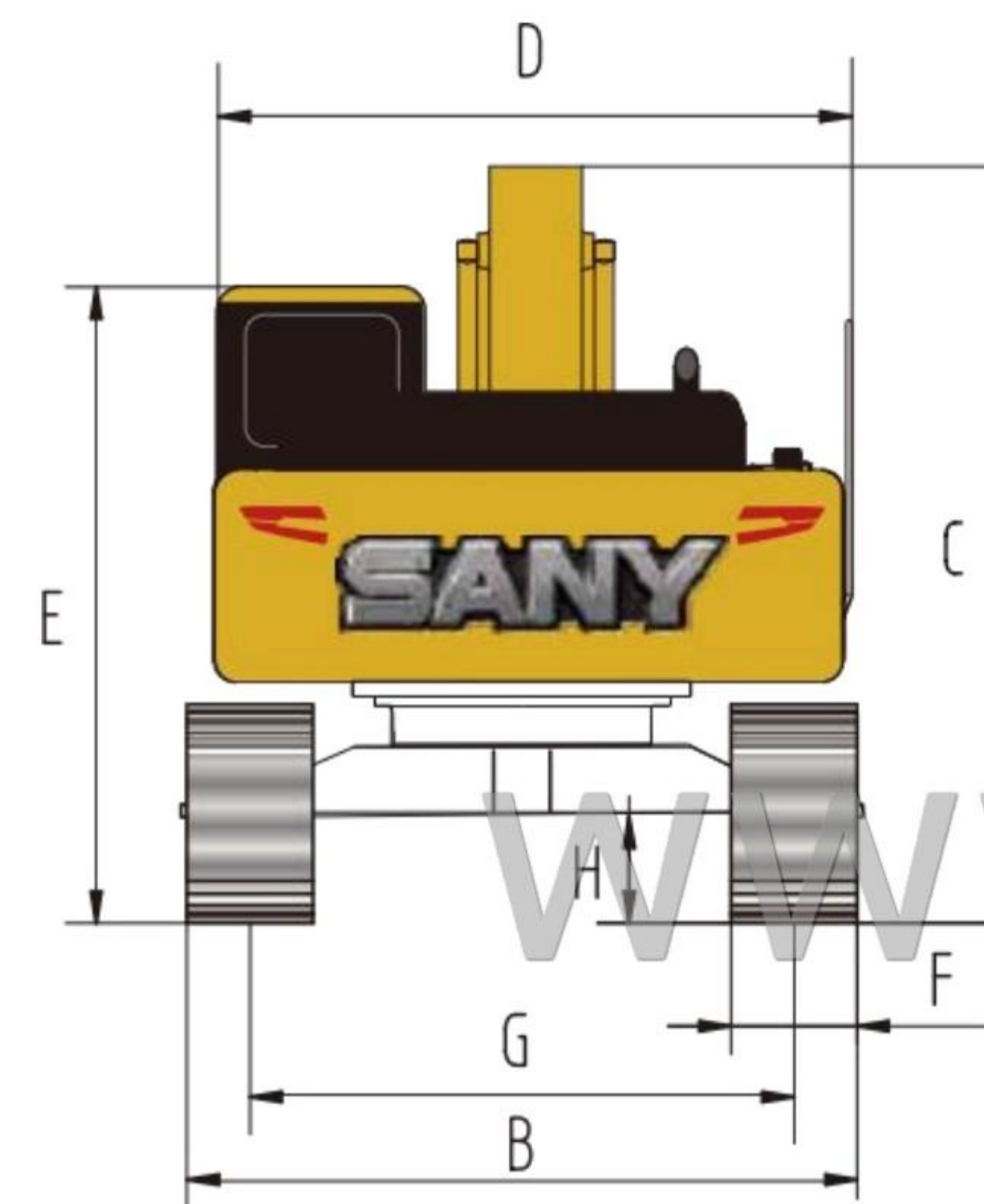
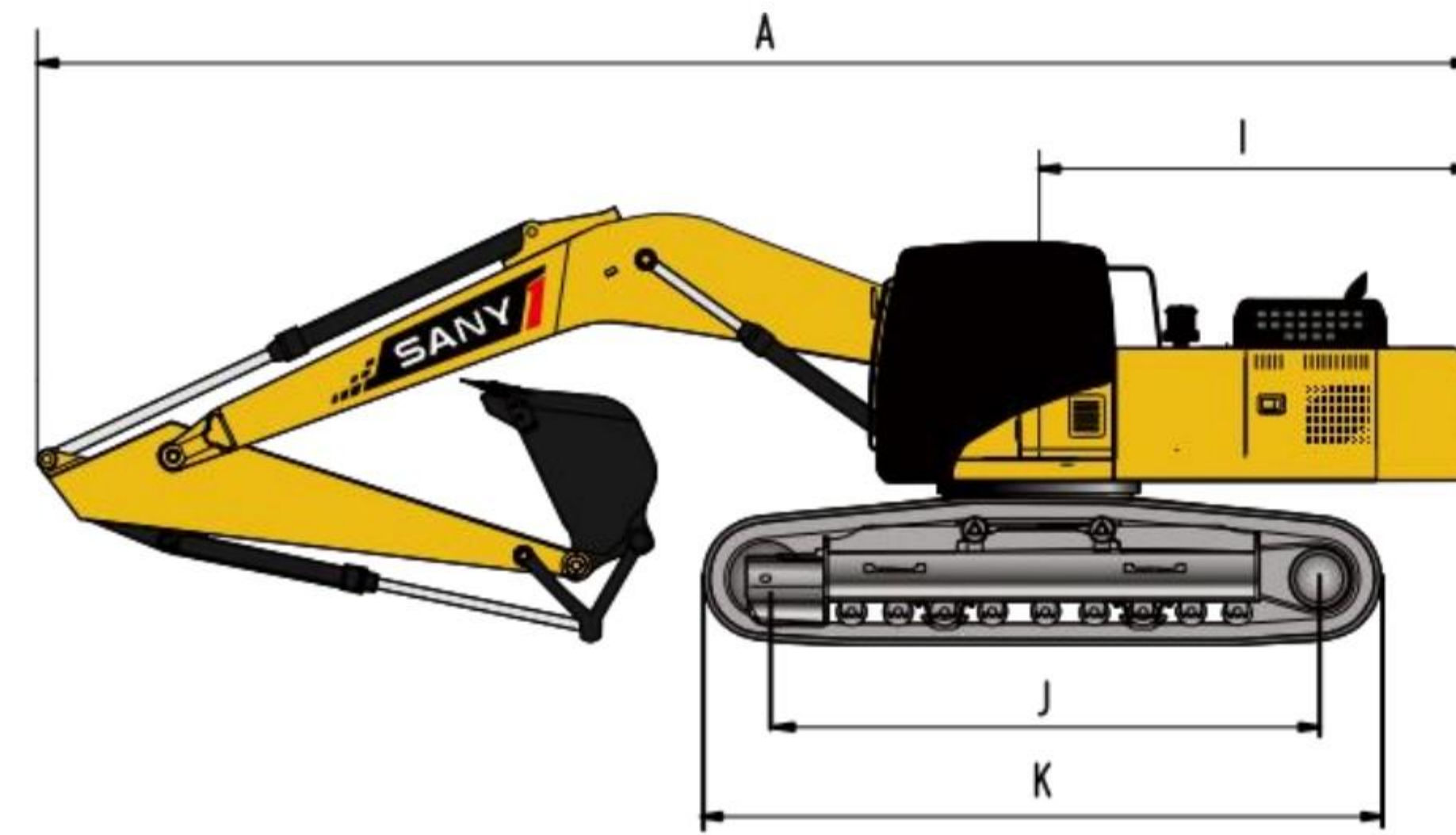


Specification		Main performance	
Total weight	23000kg	Walking speed (high/low)	5.6/3.5(km/h)
Bucket capacity	1.35m³	Rotation speed	11.5rpm
Engine	Isuzu 4HK1	Climbing ability	70%(35°)
Form	Inline, water-cooled, four-stroke, turbocharged	Grounding specific voltage	51kpa
Rated power	128kW/2000rpm	Bucket digging force	158kN
Maximum torque	820/1300-1500Nm/rpm	Boom digging force	124kN
Displacement	5.2L		

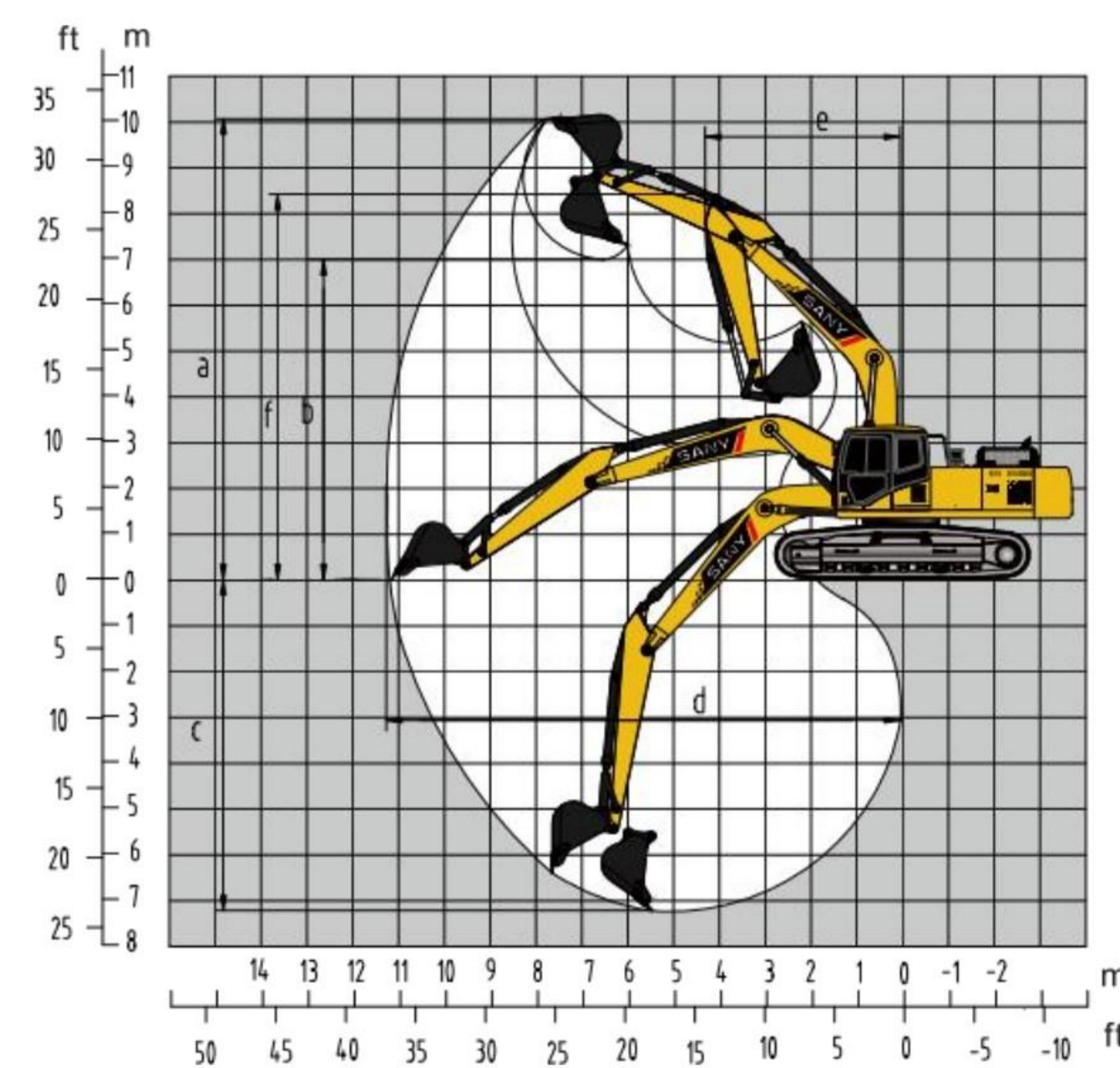
Oil and Coolant Capacities		Travel System	
Fuel tank	370L	Number of track shoes per side	49
Engine oil	25L	Upper rollers per side	2
Hydraulic oil tank	260	Lower rollers per side	9
Coolant	34L	Track shoe width	600mm
Travel reduction gear oil	2 × 4.0L		
Swing reduction gear oil	5.3L		

# Technical Specifications

Overall Dimensions (mm)	SY235H-S
A. Overall Length (Transport)	9635
B. Overall Width	2980
C. Overall Height (Transport)	3100
D. Upper Structure Width	2813
E. Overall Height (Cab Top)	3050
F. Standard Track Shoe Width	600
G. Track Gauge	2380
H. Minimum Ground Clearance	442
I. Tail Swing Radius	2900
J. Track Ground Contact Length	3640
K. Track Length	4446



Working Range (mm)	SY235H-S
a. Maximum Digging Height	9470
b. Maximum Dumping Height	6735
c. Maximum Digging Depth	6450
d. Maximum Digging Radius	9745
e. Minimum Swing Radius	3662
f. Maximum Height at Minimum Swing Radius	7600



# Lifting Capacity Chart

Load Height (B) m	Load Radius (A)								Counterweight-h4t700kg		
	Boom---5900mm				Ar-m-2950mm				Track Shoe Wid-t-h600mm		
	3.0m	4.5m	6.0m	7.5m	Lifting Capacity	Distance					
7.5m kg			5981	5981	5999.57	5999.57	6.15				
6.0m kg			6083	6083	5775	5673	5669.90	5639.70	7.53		
4.5m kg			6242	6242	5838	5682	5665.06	5010.26	8.10		
3.0m kg		9459	9459	7856	7502	6724	5385	6120.86	4620.53	8.40	
1.5m kg		11713	10834	8870	7118	7037	5191	5949.35	4429.29	8.50	
0 kg		12789	10477	9541	6859	6892	5049	6113.97	4527.26	8.26	
-1.5m kg	11091	11091	13080	10367	9574	6879	6953	5108	6703.49	4982.43	7.75
-3.0m kg	17705	17705	12543	10457	9339	6974			7930.62	5867.41	6.91
-4.5m kg	15261	15261	10814	10766					8623.42	8065.14	5.51

1. Calculated in accordance with ISO 10567 and SAE J1097 standards; hydraulic system limiting factor is 0.87; tipping limiting factor is 0.75.
2. Values marked with \* are hydraulically limited; unmarked values are stability limited.
3. The lifting point is the front arm support pin (bucket weight excluded). Any additional attachments such as buckets must be deducted from the above lifting capacity.

# Standard Configuration

Engine	Cab	Undercarriage
Dynamic optimization mode control ●	Super-quiet cab frame ●	Travel motor guard ●
Radiator (with full protective screen) ●	Tinted safety glass windows ●	H-type track guiding mechanism ●
24V / 6.5kW starting motor ●	Silicone rubber shock absorbers ●	Hydraulic track tensioner ●
50A alternator ●	Openable roof, front upper and left-side windows ●	Bolt-on drive sprockets ●
Dry-type dual-element air filter ●	Rear window emergency exit ●	Upper rollers & lower rollers ●
Oil filter ●	Windshield wiper (with washer) ●	Sealed and lubricated heavy-duty track links ●
3-stage fuel filter ●	Multi-position adjustable seat ●	600mm triple-grouser track shoes ●
Oil cooler ●	Footrest & floor mat ●	Heavy-duty side steps ●
Radiator expansion tank ●	Speakers & rear-view mirrors ●	Belly pan guard ●
Fan shroud ●	Seat belt & fire extinguisher ●	
Auto-idle system ●	Cup holder & cab light ●	
	Emergency escape hammer ●	
	Storage box & utility bag ●	
	Pilot control lock lever ●	
	Fully automatic air conditioner ●	
	One-touch start system ●	
	10-inch smart touch screen ●	
	Bluetooth, multi-function panel ●	
	24V power supply port, USB interface ●	
	Front protective net ○	

● Standard ○ Optional

# Standard Configuration

Hydraulic System	Front Working Equipment	Warning System
Working mode selector switch ●	Flange pins ●	Controller fault ●
Control valve with main relief valve ●	Bucket clearance adjustment mechanism ●	Pump pressure abnormality ●
Control valve with auxiliary ports ●	Welded linkage ●	Pilot pressure abnormality for all functions ●
Suction filter ●	Centralized lubrication system ●	Power supply voltage abnormality ●
Return filter ●	Dust seals on all bucket pins ●	Starter motor relay abnormality ●
Pilot filter ●	Heavy-duty all-welded box boom ●	Hydraulic oil temperature abnormality ●
Drain filter ●	Heavy-duty all-welded box arm ●	Low engine oil pressure / engine coolant overheat ●
	Anti-collision guard plate ●	Low fuel level ●
		Return filter clogging alarm ●
		Engine fault alarm ●
		Fuel filter water level alarm ●

Upper Structure	Monitoring System & Gauges	Others
Fuel level sensor ●	GPS global positioning system ●	High-capacity battery ●
Hydraulic oil level gauge ●	10-inch color display screen ●	Lockable engine hood ●
Toolbox ●	E-Vision telematics system ●	Lockable fuel cap ●
Swing parking brake ●	Hour meter, fuel tank level gauge ●	Anti-slip steps, handrails & walkways ●
Rear-view mirror (right side) ●	Engine coolant temperature gauge ●	Travel direction markings on track frame ●
Rear-view camera ●		Manual grease gun ●

● Standard ○ Optional