



CCC 强制性产品认证



CQC 质量管理体系认证



CNAS 检测实验室资质认定



中国环境标志产品认证



安全 · 环保 · 时尚 · 领先

www.wme

- ★ 新一代
- ★ 五系列
- ★ 领先型

SQ12SK3Q

随车起重機

TRUCK - MOUNTED CRANE

Truck Mounted Crane SQ12SK3Q

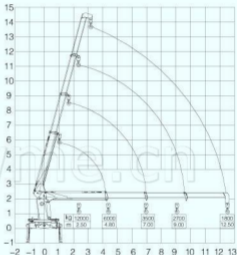
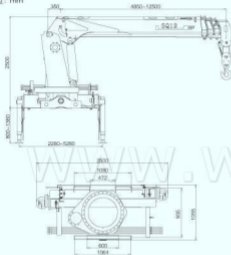
www.wme.cn/TruckMountedCrane/

TRUCK - MOUNTED CRANE

SQ12SK3Q 随车起重机

起重能力曲线图 CURVE GRAPH OF LIFTING CAPACITY

单位: mm



起重机主要技术参数 MAIN SPECIFICATION

最大起升质量	Max Lifting Capacity	12000	kg
最大起重力矩	Max Lifting Moment	30	T.M
推荐功率	Recommend Power Needed At Recommend Oil Flow	30	kw
液压系统最大流量	Max Oil Flow Of Hydraulic System	63	L/min
液压系统额定压力	Rated Pressure Of Hydraulic System	26	MPa
油箱容积	Oil Tank Capacity	180	L
回转角度	Rotation Angle	全回转	All Rotation
起重机自重	Crane Weight	4200	kg
此重量为参考值, 具体以公告为准			
安装空间	Installation Space	1300	mm

主要特点 MAIN FEATURE

1. 伸缩式同步伸缩吊臂, 作业效率更高, 起重能力更强。
2. 行星式起升减速, 有效降低系统温度, 作业速度更快, 可靠性更高。
3. 支腿油缸可自动翻转, 提高整车越野性。
4. 分体式操作机构, 更加安全、便捷。

1. The synchronous telescoping boom of steel cable type makes a higher efficiency and lifting capacity.
2. The planet lifting which that reduces the temperatures of the hydraulic system efficiently and gives a faster lifting speed and higher reliability.
3. The employment of automatic reversing of outrigger cylinder improves cross-country ability of the chassis.
4. The separation controlling system is more safety and convenient.