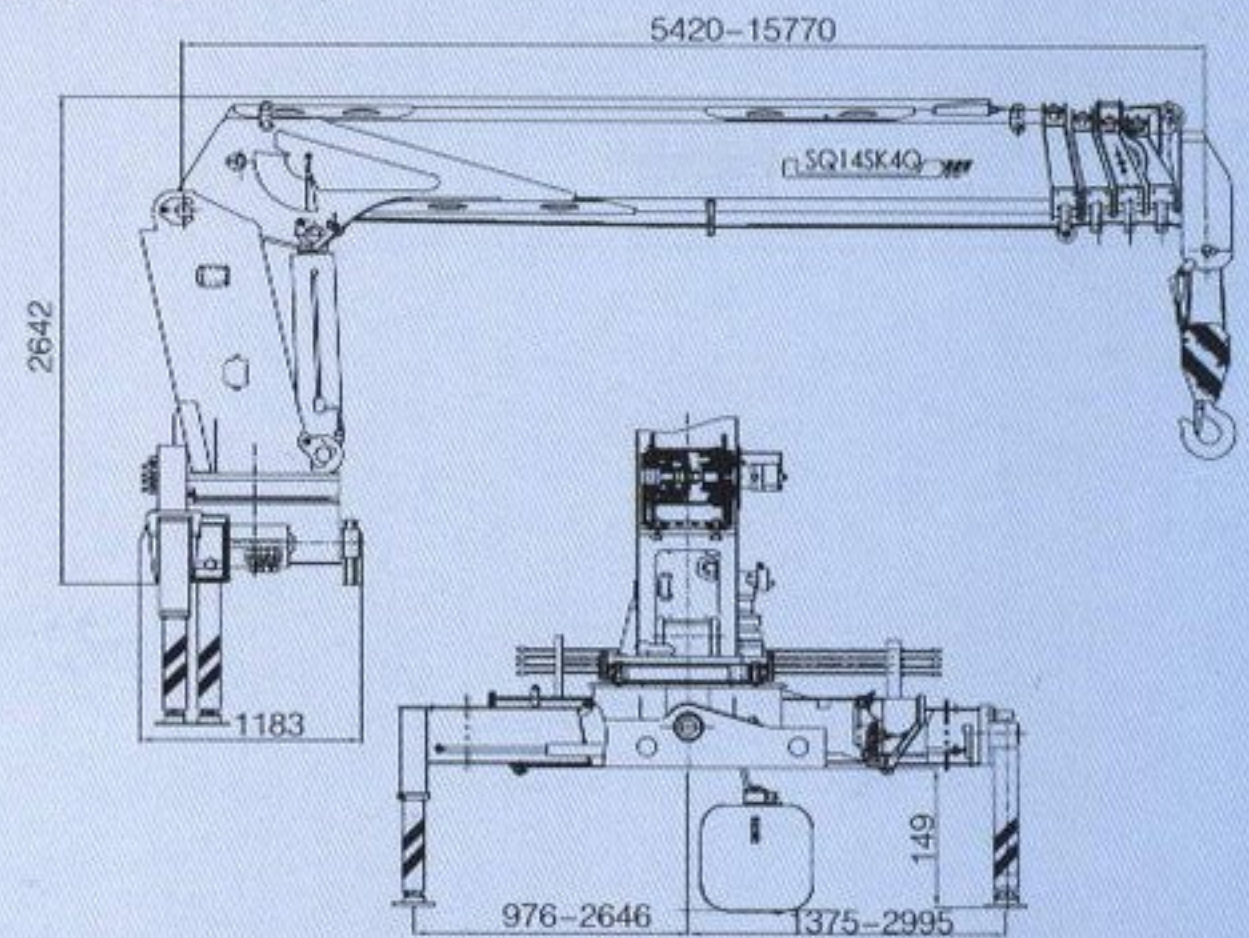


起重机外形尺寸 CRANE OUTSIDE MEASUREMENT

单位: mm



主要特点 MAIN FEATURE

- 1、绳排式同步伸缩吊臂，作业效率更高，起重能力更强；
- 2、行星式起升绞车，有效降低系统温度，作业速度更快，可靠性更高；
- 3、分体式操作机构，更加安全、便捷；
- 4、最大起重量14吨，最大工作幅度11.4米；
- 5、可选配座椅式操纵系统。

- 1、The synchronous telescoping boom of steel cable type makes a higher efficiency and lifting capacity.
- 2、The planet lifting winch that reduces the temperature of the hydraulic system efficiently and gives a faster lifting speed and higher reliability.
- 3、the separation controlling system is more safe and convenient.
- 4、The max lifting capacity is 14 T, the max working height in full extension is 11.4 M.
- 5、It is optional to seat-control system.

SQ14SK4Q

SQ14SK4Q起重机主要技术参数

MAIN SPECIFICATION

型号	Model	SQ14SK4Q	单位unit
最大起升质量	Max Lifting Capacity	14000	kg
最大起重力矩	Max Lifting Moment	35	T.M
推荐功率	Recommend Power	32	kw
液压系统最大流量	Max Oil Flow Of Hydraulic System	63	L/min
液压系统额定压力	Rated Pressure Of Hydraulic System	26	Mpa
油箱容积	Oil Tank Capacity	120	L
回转角度	Rotation Angle	全回转	All Rotation
起重机自重	Crane Weight	4800	kg
安装空间	Installation Space	1300	mm
起升质量/工作幅度	Lifting Capacity/Working Radius	14000/2.50	kg/m
		6000/5.00	
		3500/8.00	
		2300/11.00	
		1800/13.20	
最大工作幅度	Max Working Radius	15.77	m
最大起升高度	Max Working Height	17.80	m

上述参数为改装后参数，更多配置底车请咨询当地销售经理。

The above parameters are for refitted models, for more chassis options for refitting sake please consult the local sales manager.