



中国强制认证



ISO9001质量管理体系认证



ISO14001环境管理体系认证



中国职业安全健康管理体系认证

安全 · 环保 · 时尚 · 领先

- ★新一代
- ★K系列
- ★领先型

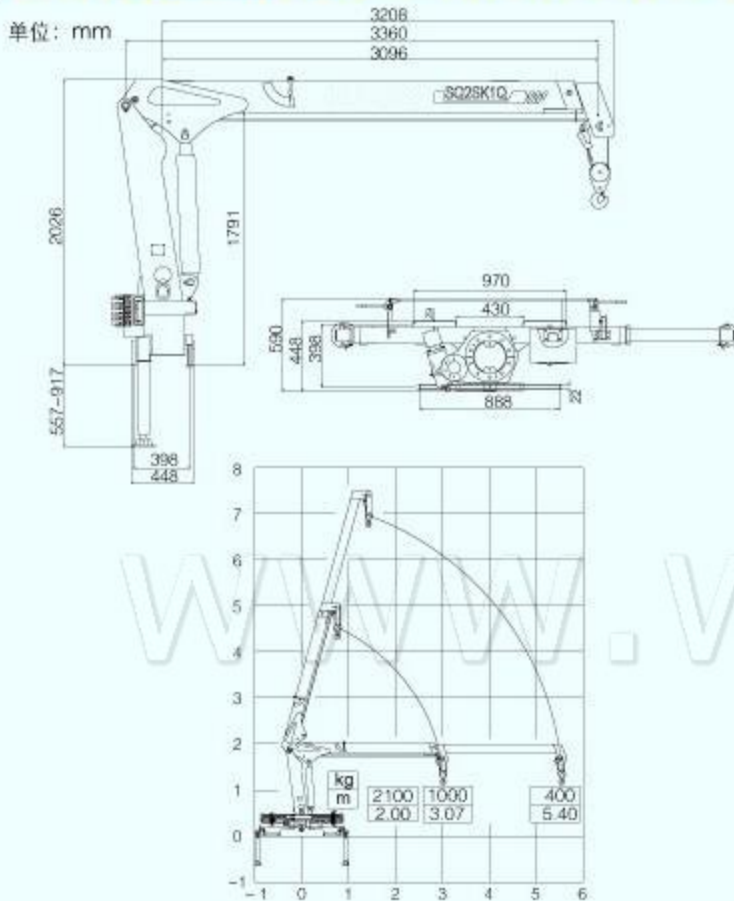
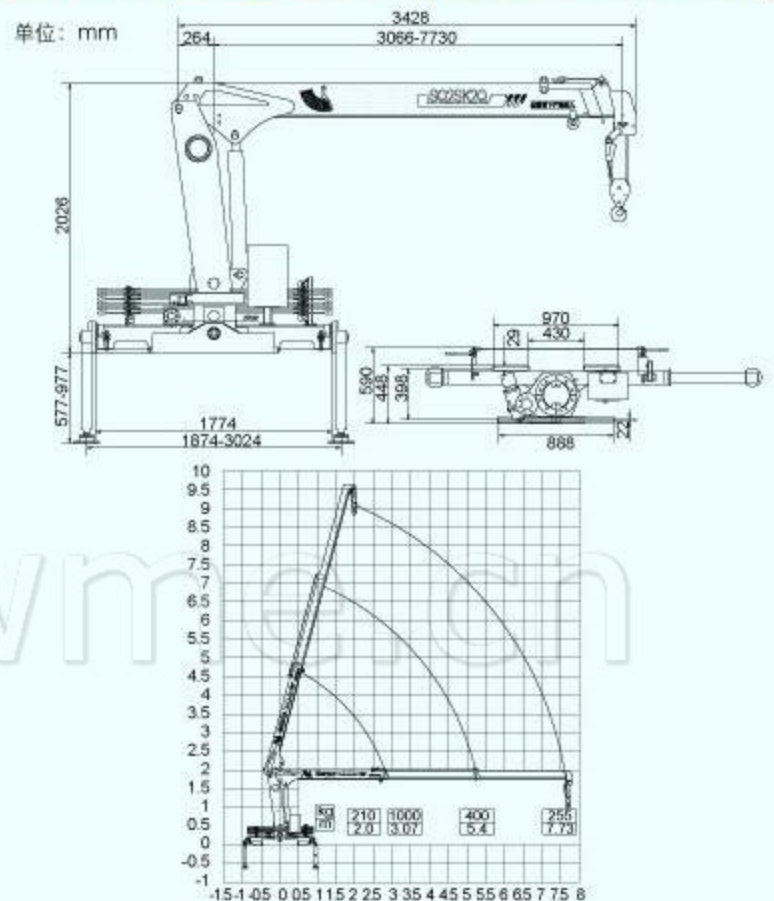
SQ2SK1Q/K2Q

随车起重机

TRUCK - MOUNTED CRANE

TRUCK - MOUNTED CRANE

SQ2SK1Q/K2Q 随车起重机

SQ2SK1Q 起重能力曲线图 CURVE GRAPH OF LIFTING CAPACITY

SQ2SK2Q 起重能力曲线图 CURVE GRAPH OF LIFTING CAPACITY

SQ2SK1Q 起重机主要技术参数 MAIN SPECIFICATION

| | | | |
|------------------|--|------|--------------|
| 最大起升质量 | Max Lifting Capacity | 2100 | kg |
| 最大起重力矩 | Max Lifting Moment | 4.2 | T.M |
| 推荐功率 | Recommend Power Needed At Recommend Oil Flow | 9 | kw |
| 液压系统最大流量 | Max Oil Flow Of Hydraulic System | 20 | L/min |
| 液压系统额定压力 | Rated Pressure Of Hydraulic System | 16 | MPa |
| 油箱容积 | Oil Tank Capacity | 25 | L |
| 回转角度 | Rotation Angle | 全回转 | All Rotation |
| 起重机自重 | Crane Weight | 758 | kg |
| 此重量为参考值, 具体以公告为准 | | | |
| 安装空间 | Installation Space | 850 | mm |

SQ2SK2Q 起重机主要技术参数 MAIN SPECIFICATION

| | | | |
|------------------|--|------|--------------|
| 最大起升质量 | Max Lifting Capacity | 2100 | kg |
| 最大起重力矩 | Max Lifting Moment | 4.2 | T.M |
| 推荐功率 | Recommend Power Needed At Recommend Oil Flow | 9 | kw |
| 液压系统最大流量 | Max Oil Flow Of Hydraulic System | 20 | L/min |
| 液压系统额定压力 | Rated Pressure Of Hydraulic System | 16 | MPa |
| 油箱容积 | Oil Tank Capacity | 25 | L |
| 回转角度 | Rotation Angle | 全回转 | All Rotation |
| 起重机自重 | Crane Weight | 818 | kg |
| 此重量为参考值, 具体以公告为准 | | | |
| 安装空间 | Installation Space | 850 | mm |

主要特点 MAIN FEATURE

- 1、安装空间小, 自重轻, 载重量大。
- 2、设计安全可靠, 外观优美。
- 3、支腿油缸可手动翻转, 提高整车越野性。

- 1、Smaller installation spaces with a lighter weight and bigger capacity.
- 2、Reliable design and good out looking.
- 3、The employment of manual reversing of outrigger cylinder improves cross-country ability of the chassis.