



CCC 强制性产品认证



CQC 质量管理体系认证



CNAS 检测实验室资质认证



中国环境标志产品认证

安全 · 环保 · 时尚 · 领先



- ★ 新一代
- ★ 五系列
- ★ 领先型

SQ5SK2Q/K3Q

随车起重机

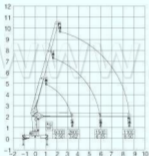
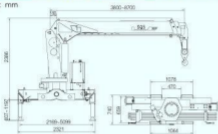
TRUCK - MOUNTED CRANE

TRUCK - MOUNTED CRANE

SQ5SK2Q/K3Q 随车起重机

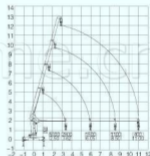
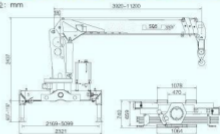
SQ5SK2Q起重能力曲线图 CURVE GRAPH OF LIFTING CAPACITY

单位: mm



SQ5SK3Q起重能力曲线图 CURVE GRAPH OF LIFTING CAPACITY

单位: mm



SQ5SK2Q起重机主要技术参数 MAIN SPECIFICATION

| | | | |
|------------------|--|------|--------------|
| 最大起升质量 | Max Lifting Capacity | 5000 | kg |
| 最大起升力矩 | Max Lifting Moment | 12.5 | T.M |
| 推荐功率 | Recommend Power Needed At Recommend Oil Flow | 18 | kw |
| 液压系统最大流量 | Max Oil Flow Of Hydraulic System | 32 | L/min |
| 液压系统额定压力 | Rated Pressure Of Hydraulic System | 18 | MPa |
| 油箱容积 | Oil Tank Capacity | 90 | L |
| 回转角度 | Rotation Angle | 全回转 | All Rotation |
| 起重机自重 | Crane Weight | 2074 | kg |
| 此重量为参考值, 具体以公告为准 | | | |
| 安装空间 | Installation Space | 900 | mm |

SQ5SK3Q起重机主要技术参数 MAIN SPECIFICATION

| | | | |
|------------------|--|------|--------------|
| 最大起升质量 | Max Lifting Capacity | 5000 | kg |
| 最大起升力矩 | Max Lifting Moment | 12.5 | T.M |
| 推荐功率 | Recommend Power Needed At Recommend Oil Flow | 18 | kw |
| 液压系统最大流量 | Max Oil Flow Of Hydraulic System | 32 | L/min |
| 液压系统额定压力 | Rated Pressure Of Hydraulic System | 18 | MPa |
| 油箱容积 | Oil Tank Capacity | 90 | L |
| 回转角度 | Rotation Angle | 全回转 | All Rotation |
| 起重机自重 | Crane Weight | 2170 | kg |
| 此重量为参考值, 具体以公告为准 | | | |
| 安装空间 | Installation Space | 900 | mm |

主要特点 MAIN FEATURE

- 1、内翼拉索式同步伸缩吊臂, 作业效率更高, 起重能力更强。
- 2、安装空间进一步缩小, 整车更加紧凑。
- 3、总体设计更具人性化, 外观更时尚。

- 1、The synchronous telescoping boom of inner put steel cable type makes a higher efficiency and lifting capacity
- 2、Much smaller installation spaces to make the vehicles more compact
- 3、Much more human oriented design and better looking