



安全 · 环保 · 可靠 · 领先

★新一代
★K系列
★领先型

SQS500K5Q

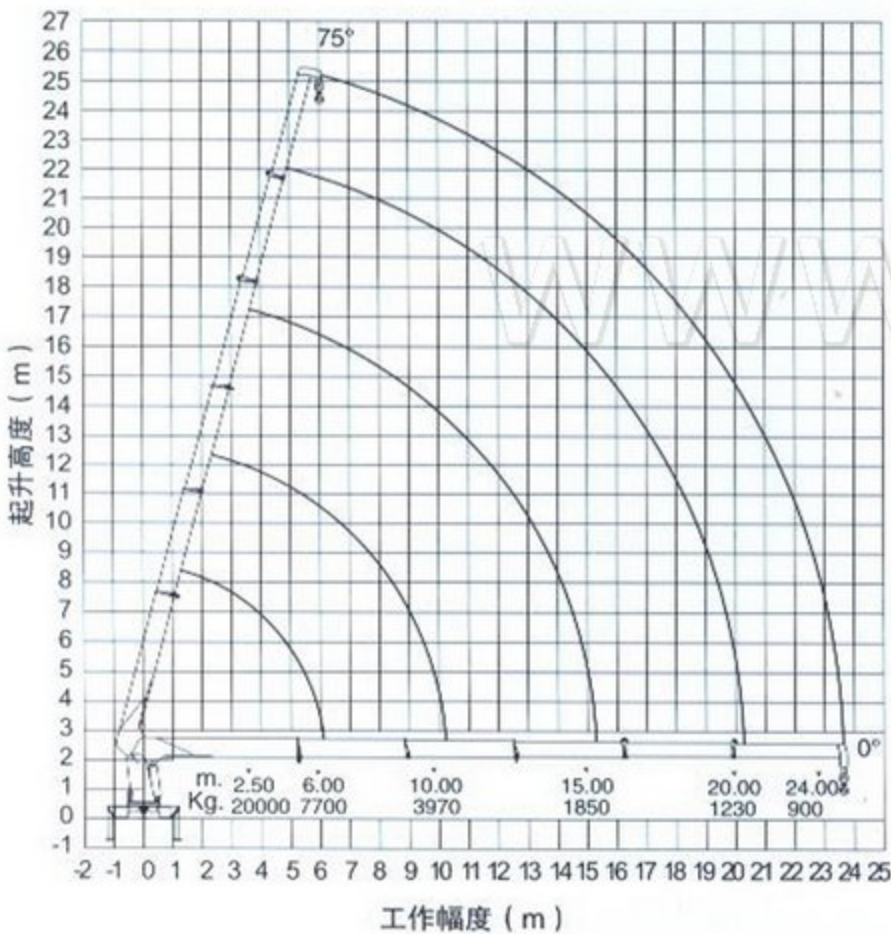
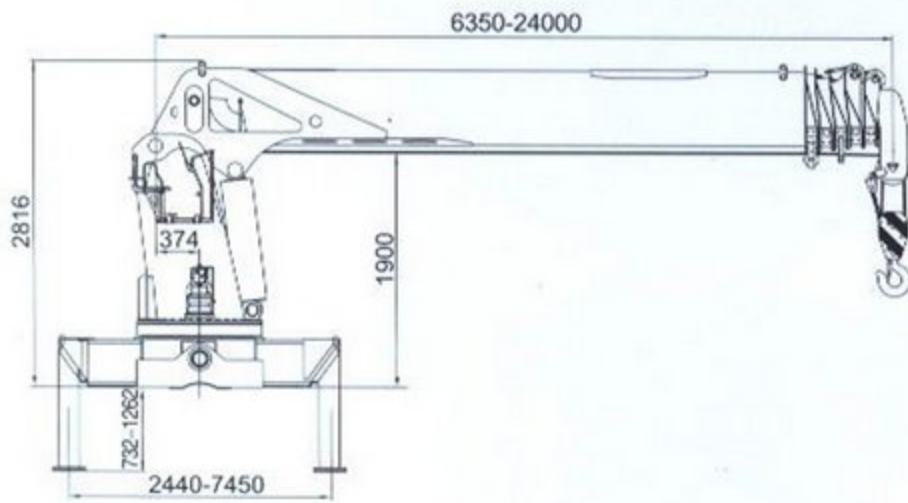
随车起重机

TRUCK - MOUNTED CRANE

TRUCK - MOUNTED CRANE

SQS500K5Q 随车起重机

单位: mm



起重机主要参数 MAIN SPECIFICATION

最大起升质量	Max Lifting Capacity	20000	kg
最大起重力矩	Max Lifting Moment	50	T.M
推荐功率	Recommend Power	35	kw
液压系统最大流量	Max Oil Flow of Hydraulic System	120	L/min
液压系统额定压力	Max Pressure of Hydraulic System	26	MPa
油箱容积	Oil Tank Capacity	260	L
起重机自重	Crane Weight	7100	kg
安装空间	Installation Space	1300	mm
回转角度	Rotation Angle	360° 全回转 All Rotation °	

起重性能参数表 RATED LIFTING LOAD

工作幅度 (m) Working Radius	不同臂长最大起升载荷 Max lifted load (kg)				
	6.35m	10.35m	15.35m	20.35m	24.35m
2.50	20000				
3.00	16500	14000			
3.50	14000	11700	8100		
4.00	12000	10200	7100		
4.50	11000	9100	6300		
5.00	9500	8200	5670	5000	
5.50	8500	7450	5160	4550	
6.00	7700	6850	4730	4170	4000
6.50		6300	4360	3850	3370
7.00		5870	4050	3570	3130
7.50		5450	3780	3330	2920
8.00		5100	3550	3120	2739
8.50		4850	3340	2940	2570
9.00		4500	3150	2780	2435
9.50		4200	3000	2630	2300
10.00		3970	2830	2500	2190
10.50			2700	2380	2080
11.00			2580	2270	1990
11.50			2460	2170	1900
12.00			2360	2080	1820
12.50			2270	2000	1750
13.00			2180	1920	1680
13.50			2100	1850	1620
14.00			2000	1780	1560
14.50			1950	1720	1510
15.00			1850	1680	1460
15.50				1610	1410
16.00				1560	1360
16.50				1510	1320
17.00				1470	1280
17.50				1430	1250
18.00				1390	1210
18.50				1350	1180
19.00				1300	1150
19.50				1280	1120
20.00				1250	1090
20.50					1060
21.00					1040
21.50					1010
22.00					990
22.50					970
23.00					950
23.50					920
24.00					900

主要特点 MAIN FEATURE

- 1、超高强板的应用使得整机重量更轻，起重性能更强；
- 2、下六边形吊臂结构，起重性能更强、刚性更好；
- 3、双泵合流技术，可实现多动作联动，节能、高效；
- 4、直臂力矩限制系统为起重机提供安全的作业环境；
- 5、异形大跨距双腔伸缩支腿提高起重机稳定性。

- 1、 Superhigh reinforce board makes crane lightweight and have higher lifting capacity.
- 2、 hexagon boom with higher lifting capacity and rigidity.
- 3、 double pump interflow technology make various actions performed simultaneously, lead to high efficiencies and savings.
- 4、 Moment limited system of telescopic boom can supply safety working environment for crane.
- 5、 Big span stabilizer legs can improve crane's stability.