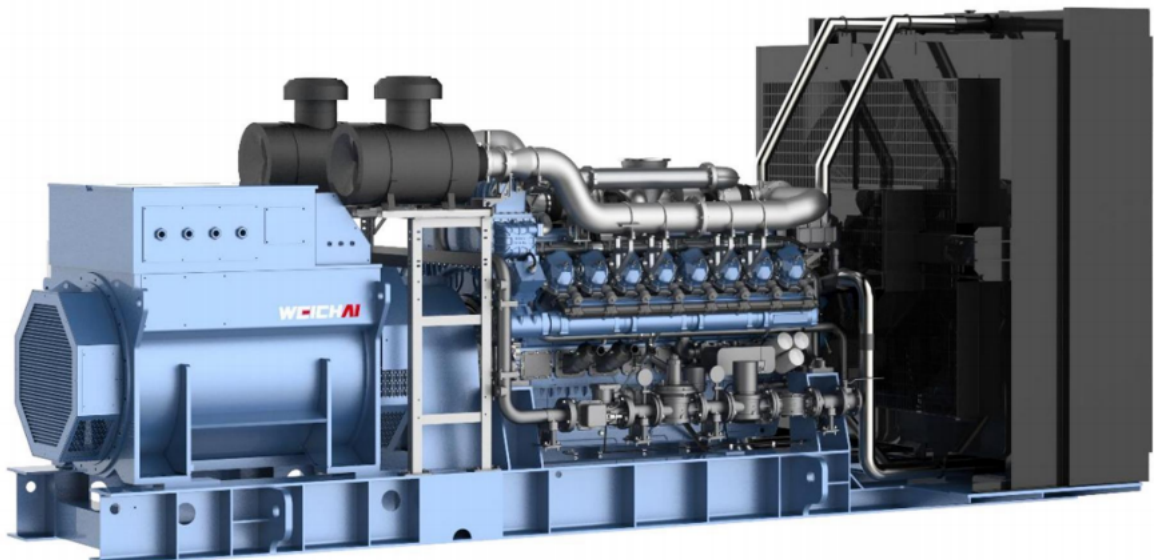


WP1100GEQW

GAS GEN-SETS DATASHEET



Gen-set specifications

| | |
|--|--|
| Model | WP1100GFQW |
| PrimeRating kVA/kWe | 1375/1100 |
| Continual Rating kVA/kWe | 1375/1100 |
| Voltage V | 400/230 |
| Frequency Hz | 50 |
| Power Factor | 0.8(lagging) |
| No.of Phases | 3 |
| Sound@7m (dB·(A)) | Open: ≤99dB (A) ; Silence: ≤85dB (A) |
| Ambienttemp (°C) | -10~40 (If<-10, oil and water heating;If>40, power correction) |
| Altitude(m) | ≤2000 |
| Fuel | Pipelinenaturalgas; MN≥85 |
| Gas supply pressure(kPa) | Max.inlet50(Special pressure,contact with company) |
| Steady-state voltage deviation | ≤±5% |
| Transient voltage deviation (100% sudden power decrease/ increase) | +35%~-25% |
| Voltage steady time(s) | 10 |
| Steady-state frequency band | ≤2.5% |
| Transient frequency deviation from rated frequency | 100% sudden power decrease≤+18%; 30% sudden power increase≤-25% |
| Frequency steady time(s) | 10 |

Standard Features

| | | |
|----------------------|------------------------|--------------------|
| ◆ECU | ◆DC24 Electric starter | ◆HGM6120CAN |
| ◆Closed water-cooled | ◆IP23 | ◆H type insulation |
| ◆Air filter | ◆Muffler | ◆Circuit Breaker |
| ◆Starting batteries | ◆with connective wires | ◆Radiator |
| ◆Oil Drain Valve | ◆Forklift Groove | ◆Shock Absorber |
| ◆Color | Beige | |
| ◆Packaging | Wrapping sheet(L) | |

Options

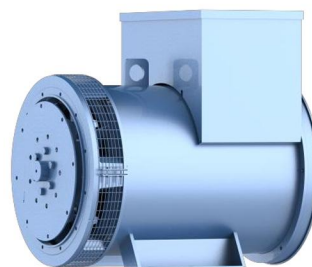
- | | | |
|---------------------------------|-----------------------------|-------------------------------|
| ◇ Voltage 380V/400V | ◇ Voltage 415V/440V | ◇ Voltage 6.3kV/10.5kV/13.8kV |
| ◇ Single Voltage 220V/230V/240V | ◇ Automatic Transfer Switch | ◇ Automatic Parallel system |
| ◇ Engine Heater (water) | ◇ Engine Heater (oil) | ◇ Alternator heater |
| ◇ PMG/AREP | | |

Engine

- Weichai 16M33NG series, 16 cylinder, 4stroke, radiator cooled engine
- Well-designed air handling system with
 - Air cleaner
 - Replaceable paper element air cleaner with restriction indicator
 - Optimized turbocharger for increased altitude capabilities
 - High efficiency, large heat area intercooler, reduce the air temperature after the intercooler
- First fill of lube oil and coolant
- NG gas regulator
- NG gas filter
- Standard integral set-mounted radiator system, designed and tested for 40°C ambient temperature
- Electrical starter motor with soft start engagement feature
- Intelligent fuel injection technology to start fast guarantee
- Battery charging alternator
- 24 V DC batteries

Alternator

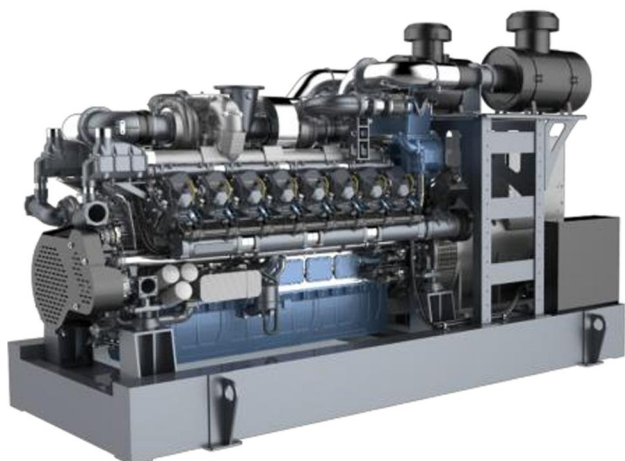
- Brushless type, Screen protected, Revolving field, Self excited alternator conforming to ISO/IEC60034-1
- Best in class efficiency
- Steel casing
- Compact design with sealed bearings for longer life and lesser maintenance
- IP23 standard protection level
- Impregnation on all wound components for better mechanical strength



Control Module

The HGM6120CAN is an Auto Mains Failure Control Module

- Back-lit LCD display
- 3 Phase generator and 3 Phase Mains monitoring
- Monitoring speed, frequency, voltage, current, oil pressure, coolant temperature
- Display warning, shutdown and engine status information
- Hours counter provides accurate information for monitoring and maintenance



Engine specifications

| | | | |
|---|----------------------------|-----------------|------------|
| Make | WEICHAI | | |
| Mode | 16M33D1280NG10 | | |
| Rated Speed r/min | 1500 | | |
| Prime Power kW | 1280 | | |
| Cooling | Close Liquid cooled | | |
| Governor | ECU | | |
| Aspiration | Turbocharged, Inter-cooled | | |
| No. of cylinders | 16,V type | | |
| Bore (mm) x Stroke (mm) | 150x185 | | |
| Displacement (L) | 52.3 | | |
| Starting system | 24VDC Electrical | | |
| Total coolant capacity engine/tank (L) | 130/NA | | |
| Radiator design temperature (℃) | 40 | | |
| Lubrication system capacity (L) | 171 | | |
| Load rate (%) | 100% | 75% | 50% |
| Fuel consumption (kg/h) | 230.2 | 178.1 | 126.2 |
| Engine high water heat quantity(kJ/s) | 560.0 | 469.2 | 369.9 |
| Engine high water flow(m³/h) | 92.9 | 92.8 | 92.8 |
| Engine high water inlet/outlet Tem. (℃) | 85.1/91.3 | 86.3/91.5 | 86.8/90.9 |
| Engine high water inlet/outlet Pre. (kPa) | -5.8/109 | -5.9/110 | -6.1/110 |
| Exhaust gas heat quantity(kJ/s) | 832.5 | 681.2 | 492.5 |
| Exhaust gas flow (kg/h) | 6264 | 4848 | 3339 |
| Exhaust Temperature (℃) | 459 | 475 | 502 |
| Exhaust back pressure (mbar) | 50 | | |
| Exhaust Temperature after recycle | Heating water120℃/0.5MPa | steam 190℃/1MPa | steam 220℃ |

Alternator specifications

| | |
|---------------------|-----------------|
| Make | Leroy somer |
| Alternator Frame | LSA50.2 L7 |
| Exciter Type | Self-excitation |
| Enclosure | IP23 |
| Voltage regulation | ≤±1% |
| Class of Insulation | H |
| Winding Pitch | 2/3 |
| Rotor | Single bearing |

Remarks

Prime Rating(PRP):

Prime power is defined as being the maximum power which a generating set is capable of delivering continuously while supplying a available electrical load when operated for an unlimited number of hours per year under the agreed operating conditions with the maintenance intervals and procedures being carried out as prescribed.

Continual Rating (COP):

These ratings are applicable for supplying continuous electrical power (at 100% load) in the event of a utility power failure. There is no limitation to the annual hours of operation under the agreed operating conditions with the maintenance intervals and procedures being carried out as prescribed.

Standard Reference Conditions

Standard operating environment: ambient temperature is -10℃~40℃, the altitude is less than 1000m,the relative humidity is less than 90%(25℃) and there is no dust\stand dust\salt fog\mold\condensation environment, etc. Fuel consumption data at full load with diesel fuel with specific gravity of 0.726 kg/N m³and low calorific value of 47.9 MJ/kg.

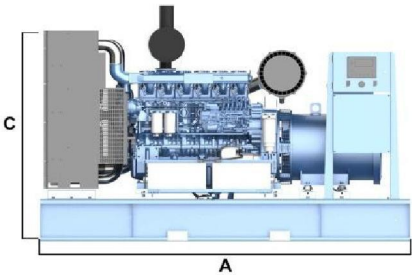
If the operating environment exceeds the above requirements, please contact with the factory.

Standard Reference Conditions

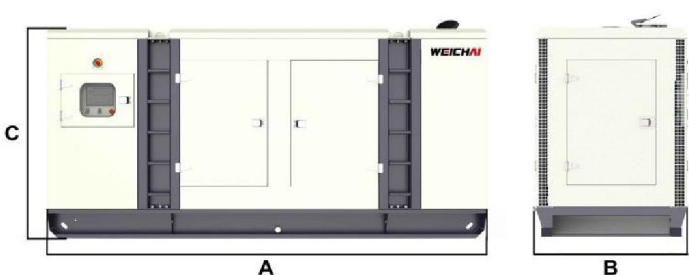
| Genset Model | Length A(mm) | Width B(mm) | Height C(mm) | Wet Weight(kg) | Note |
|--------------|--------------|-------------|--------------|----------------|------|
| Open type | 6090 | 2300 | 2800 | 12300 | |
| Silent type | 12192 | 2438 | 2896 | 19900 | |

Note: This size cannot be used for design, for design, please contact with company.

Open genset



Silence genset



The picture is for reference only