



LW900KN

— WHEEL LOADER —

All Rights Reserved

Materials and specifications are subject to change without notice.
Featured machines in photos may include additional equipment.
See your XCMG dealer for available options.



A large yellow and black XCMG LW900KN wheel loader is shown in a quarry setting. The loader is positioned on a gravel surface, with its bucket lowered. The background features reddish-brown hills under a blue sky with scattered white clouds. The loader's body is black with yellow accents, and the model number 'LW900KN' is visible on the side.

High efficiency and reliability Inheritance
of classic and high maturity
and stability

OVERVIEW

MODEL CHARACTERISTICS

- It features high efficiency, energy-saving, and strong power.
- The three-element torque converter and the fixed shaft power shift transmission feature high maturity and reliability.
- The 2600mm wheelbase features high mobility and flexibility and is applicable to all kinds of working sites.
- The bucket is made of high strength material to realize high wear and impact resistance.
- The diversified configurations and complete attachments adapt to the construction needs in different regions and under different working conditions.
- The optional A/C and the sound insulation and noise reduction measure build elaborately a comfortable operating environment.

PERFORMANCE HIGHLIGHTS

Outstanding capability, with traction at $\geq 9t$ and breakout force at $\geq 13t$.

High adaptability, with turning radius at 5,165mm (tire center).

MARKET POSITION

Industry 3t single-model sales champion.

The warranty period for the front and rear frames, boom, and arm is 2 years or 5,000 hours (whichever comes first), which is far beyond the loader industry warranty level to manifest the top quality of XCMG loaders.

The design of super-heavy-duty structural parts optimizes the hinge point of the boom to greatly improve the reliability of the bucket and boom. Based on finite element analysis and optimization, it ensures the structural strength and prolongs the life of the machine. The cab and the hood adopt an integral skeleton structure, with thick plates and high rigidity, which are more reliable and safer. The whole machine can be used for more severe working conditions. The bucket is enhanced with wear-resistant design, and key parts are made of wear-resistant and impact-resistant high-strength steel plates.



XCMG'S EXCLUSIVE TECHNOLOGIC ADVANTAGES

The latest integrated FOPS & ROPS ultra-low-noise cab features European/American mainstream style and super-large space and integrates the world's most advanced technologies nowadays to reach the world-class level and realize higher safety, broader visual field, and better operating comfort.

The scientifically matched and in-depth optimized drive system and the transmission and drive axle of international advanced quality achieve higher efficiency and reliability.

The extended wheelbase heavy-load design and the structural parts analyzed and optimized by 3D simulation meet the operation needs under severe working conditions.

The load-sensing variable technology is applied to supply the oil pressure and flow depending on the working needs, which greatly improves the utilization efficiency of fuel.

The independent single-row radiator system with large fin spacing is applied to thoroughly solve the thermal balance difficult during operations under diversified severe environments.

With $\geq 260\text{kN}$ breakout force and $\leq 6.5\text{s}$ lifting time, this product features stronger and more efficient operations.

With optional $4.0\sim 7.0\text{m}^3$ bucket depending on different materials and working conditions, this product features stronger working condition adaptability and up to 3.9m dumping height.

SPACIOUS CABIN

The luxury cab equivalent to car level features large space, broad visual field, no blind spot, and high driving safety and comfort.

The easily accessible operating units and buttons can easily realize all kinds of operation actions. The full-coverage exquisite interior trims, rubber floor, and three-layer composite noise reduction materials build a best operation environment.

The panorama rear window, high-mounted rear lamps, and reversing alarm equipped ensure good visual field and reversing safety.

 RELIABLE

LW900KN



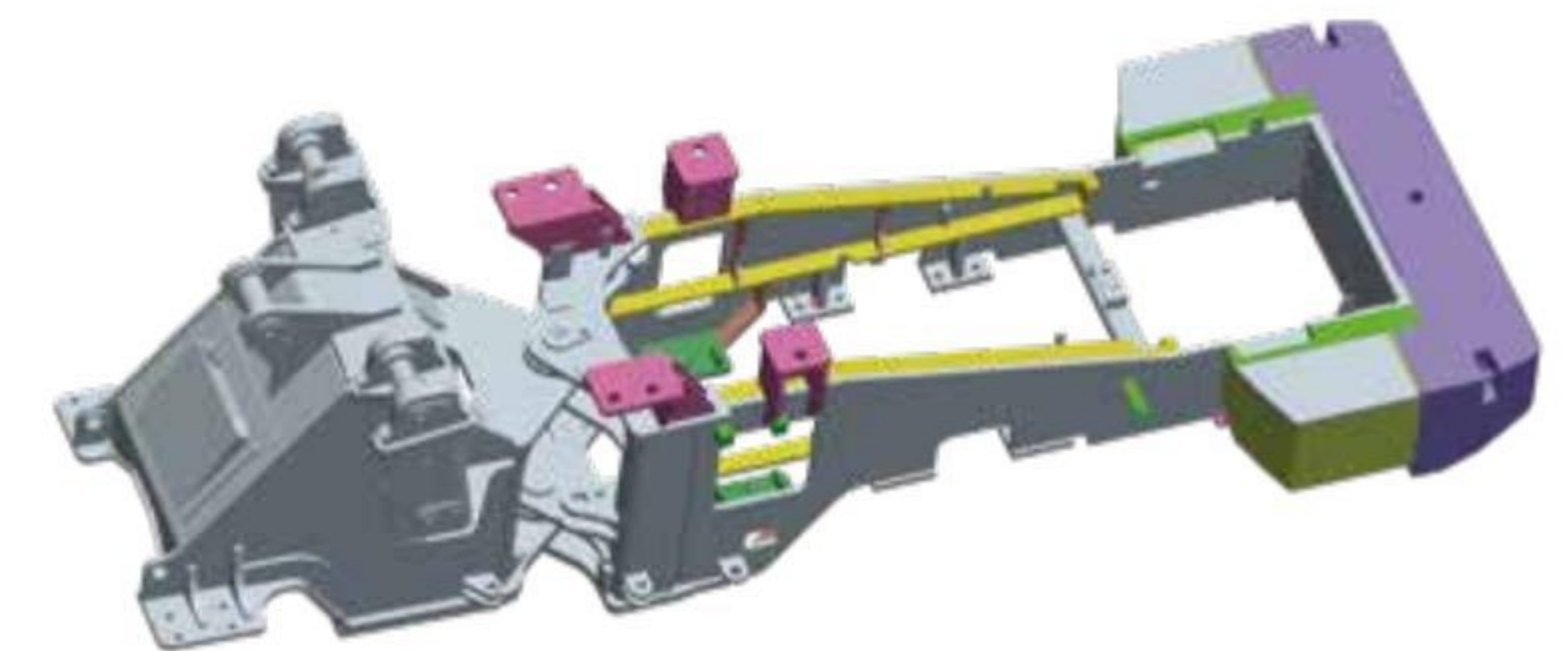
HEAVY-DUTY DESIGN ENSURES HIGH FIRMNESS AND RELIABILITY

Mightiness is the style of XCMG and heavy-duty is the characteristic of XCMG. By utilizing the international advanced design means (such as 3D simulation), XCMG builds the industry's most mighty machine structure, deeply researches the customer needs, and applies the globalized product R&D platform to guarantee the high attendance rate of the products.

FIRM FRAME

Through the finite element analysis and optimization, the front and rear frames feature reasonable layout, high stiffness, and strong overload resistance and are resistant to the torsions and impacts under various working conditions.

The double-row tapered roller bearings are applied for the upper and lower hinge pins between front and rear frames to effectively diffuse the impacts from all directions, featuring higher carrying capacity and better stability and reliability.



EFFICIENT AND FIRM WORKING DEVICE

The working device is thoroughly made of high strength sheet materials and optimally designed. The bucket is made of high strength wear-resistant material to improve the wear resistance and impact resistance by >30%. The shape optimized bucket forms a best matching with the working device to realize super-strong pile penetrating force, higher breakout force, and faster motion speed.

The advanced electromagnetic positioning technology is applied to automatically level the bucket, which simplifies the operation procedures and improves the working efficiency. The boom lifting limit prevents the mechanical impact during lifting to minimize the damages.

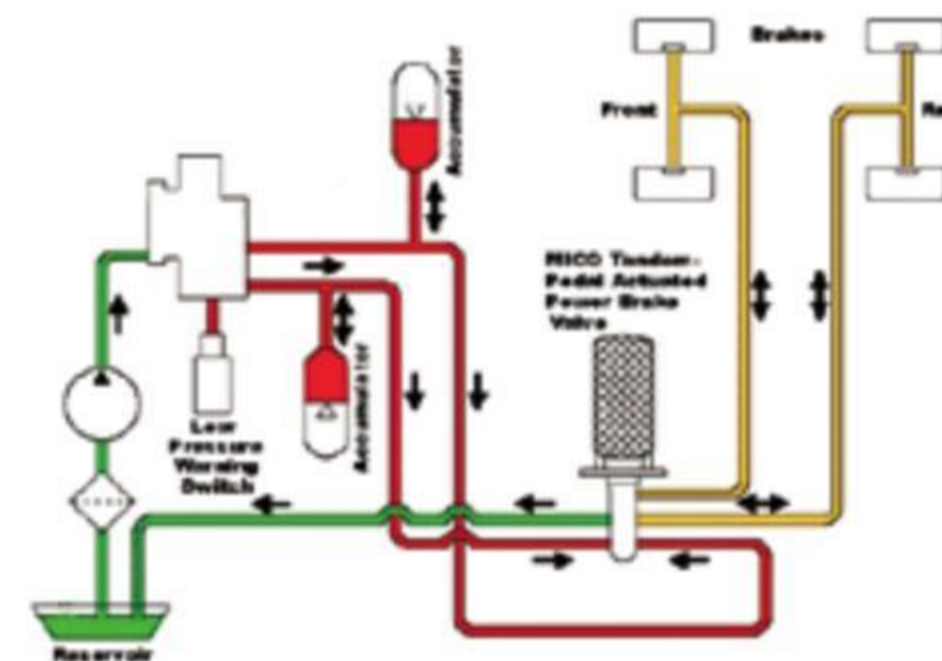


The critical parts adopt the international renowned brand products and are assembled under stringent quality management to guarantee the reliability of the machine.

MAINTENANCE-FREE HIGH RELIABILITY BRAKE SYSTEM

The full-enclosed wet brake system is applied to eliminate the blockage by dusts and impurities and the damage of brake pads, featuring less wear and maintenance-free.

Two independent hydraulic circuits isolate from each other to guarantee the safety of brake system.



DESIGN OF HIGH STRENGTH DRIVE AXLE

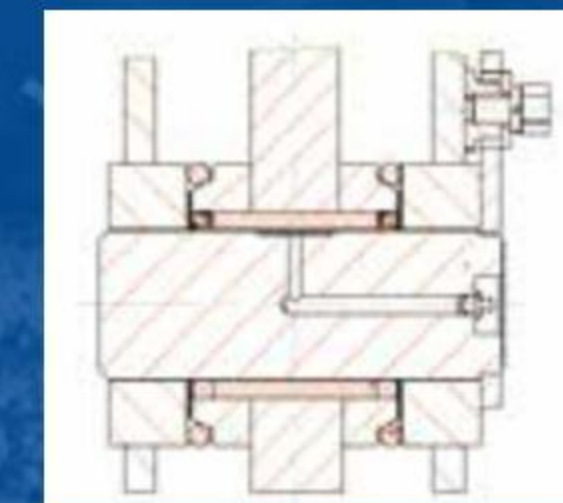
XCMG made special improvements for the internationally universal high tonnage drive axle structure to realize more sufficient lubrication and cooling for the axle bodies and longer lives of the drive axles.

SPECIAL PROTECTION AND STRUCTURE DESIGN

The electrostatic powder coating technology is comprehensively applied for the machine and the protection measure is taken for all electric connectors and critical hydraulic pipelines to form effective anti-corrosion capacity.

Optimized lubricating oil-ways: Without the drilling of holes on hinge pins, the strength and service life of the connecting hinge pins between boom and bucket are increased by more than one time to lead the industry level.

The three-stage intake filter for the engine and the additionally installed high flow ventilator for the hydraulic oil tank ensure the reliability of all systems under severe working environments.



INTERNATIONAL QUALITY HYDRAULIC AND ELECTRIC UNITS

The international brand energy-saving, high efficiency, and low noise hydraulic pump equipped provides stronger hydraulic power.

The high-precision cold-drawn steel tubes are applied for all hydraulic pipes to realize better butt welding performance and reliability.

The pilot control system features international quality, the harnesses adopt full-sealed connectors, and all electric units are treated with dustproof and waterproof technology to ensure high reliability.



HUMAN-ORIENTED AND HIGH COMFORT AND SAFETY

The latest integrated FOPS & ROPS ultra-low-noise cab features European/American mainstream style and super-large space and integrates the world's most advanced technologies nowadays to reach the world-class level and realize higher safety, broader visual field, and better operating comfort.

HIGH-EFFICIENCY AND ENERGY-CONSERVATION

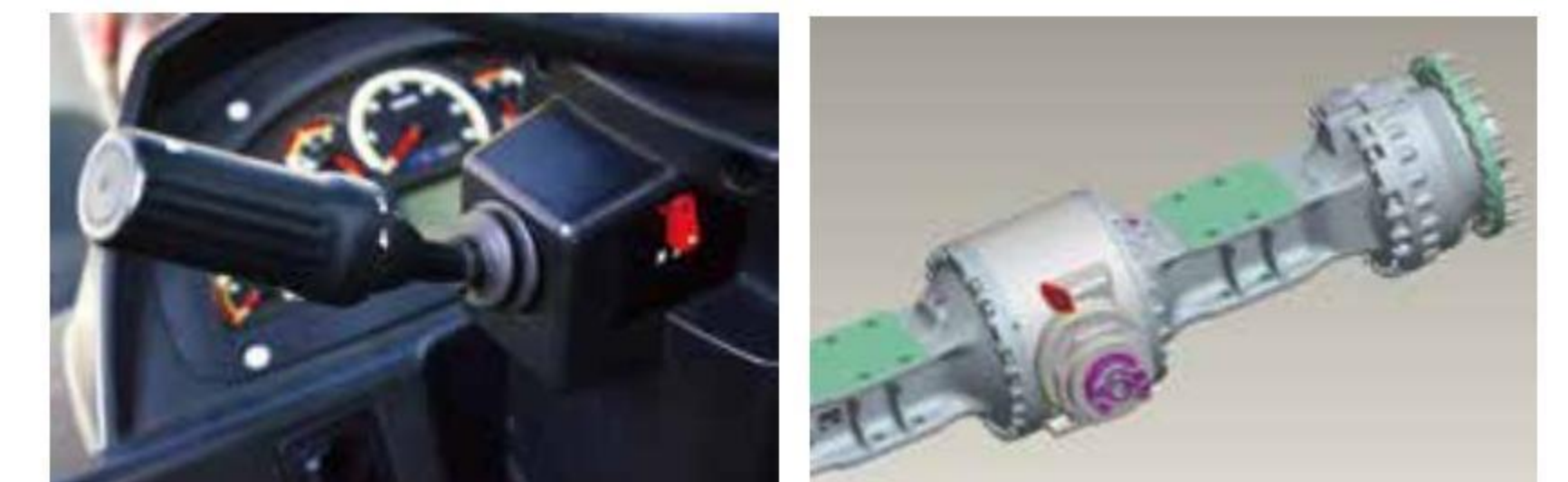
The XCMG's exclusive power system matching technology ensures the best power performance. The optimized bucket shape remarkably improves the bucket fullness rate. With powerful digging performance and rapid motions, the bucket can complete the maximum working load within the shortest time.

LW900KN is applied with the industry's most advanced energy-conservation technologies, including lightweight design, intelligent independent radiator, fully variable hydraulic system, so that the combined energy-conservation effect from these technologies is higher than 15%.

SCIENTIFICALLY MATCHED AND IN-DEPTH OPTIMIZED DRIVE SYSTEM

The international leading full-automatic electronic control transmission is equipped, with four forward and three reverse gears and switchover function between automatic and manual modes. The automatic shift technology based on intelligent control defines the reasonable gearshift strategy as per the principle of optimal drive efficiency to simplify the operations and save the energy.

The full-hydraulic wet brake axle features high carrying capacity and compact structure. The front axle is fitted with differential lock function, featuring high field adaptability.



LOW EMISSION AND LOW FUEL CONSUMPTION ENGINE

TIER-3 compliant Cummins engine

The low noise and high torque engine and the high capacity torque converter guarantee the maximum efficiency during low speed traveling to remarkably reduce the fuel consumption.

ENLARGED BUCKET CAPACITY

The high performance bucket is installed to increase the fullness coefficient, guarantee the maximum material loading volume, improve the productivity, and reduce the fuel consumption.

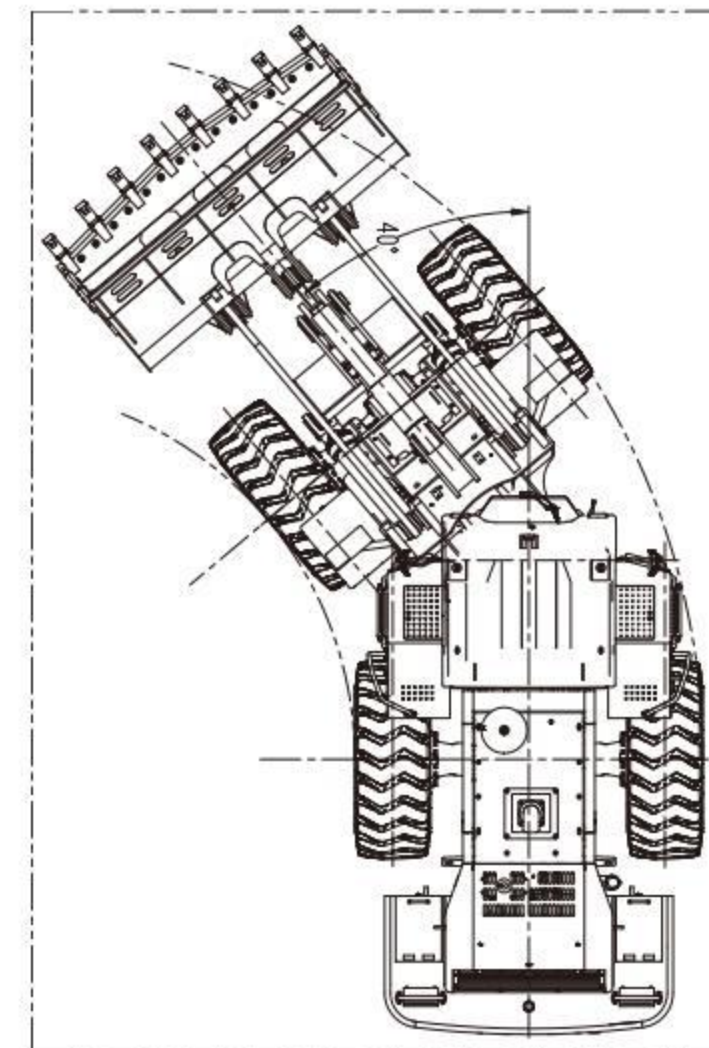
Bucket capacity: 4.0/7.0 m³
Rated bucket capacity: 5.0m³



EXTENDED WHEELBASE/38° ARTICULATED ANGLE

Extended wheelbase and wide wheel tread ensure high longitudinal and lateral stability.

The 38° articulated angle guarantees powerful field adaptability.



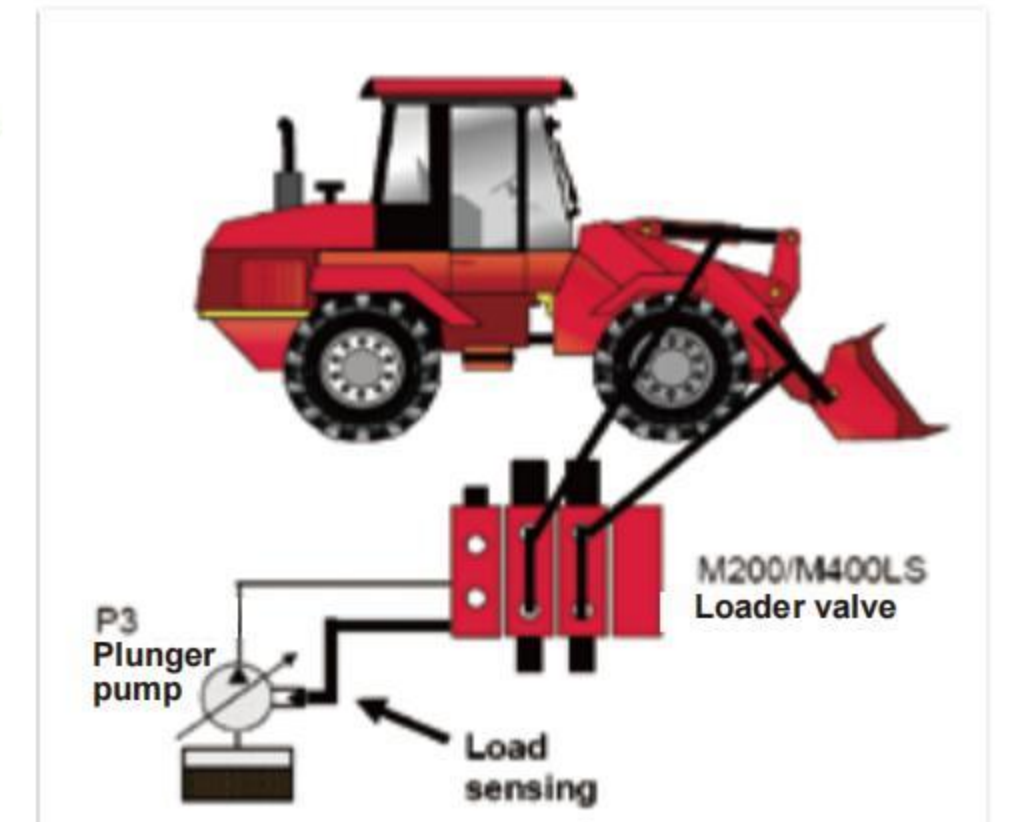
tread	2460mm
Wheelbase	3600mm
Minimum turning radius	6200mm

ENERGY-CONSERVATION AND HIGH-EFFICIENCY HYDRAULIC SYSTEM

The load-sensing variable technology is applied to supply the oil pressure and flow depending on the working needs, which prevents the high pressure overflow loss and reduces the fuel consumption by 10%.

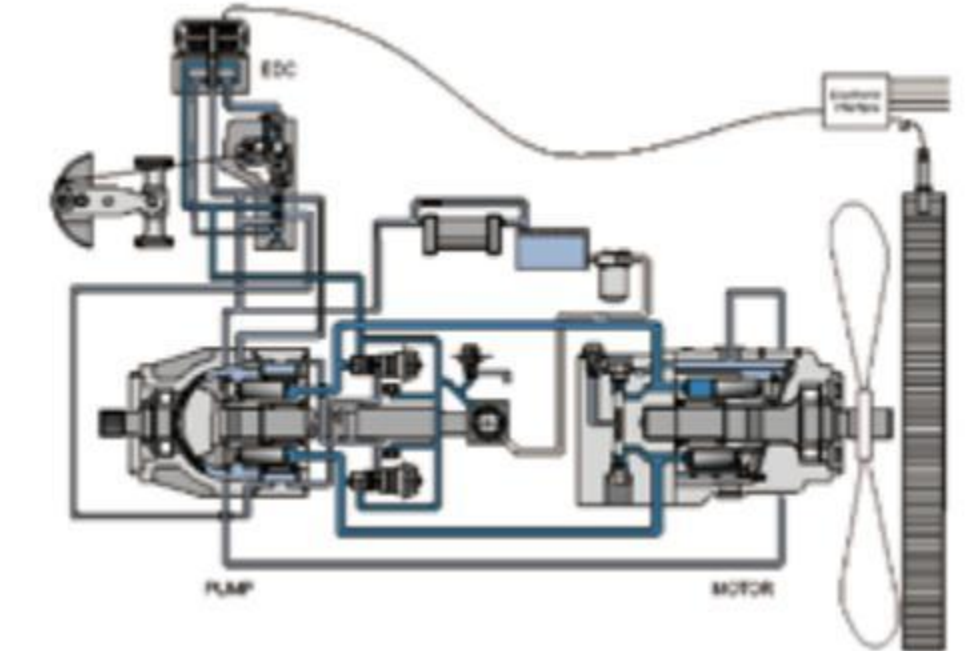
The double-pump confluence system, the hydraulic flow amplifying steering, and the single-joystick pilot control are applied to realize high efficiency and flexibility.

The pressure unloading technology is applied to realize automatic unloading, reduce the overflow loss, and remarkably improve traction force under composite working conditions. With total cycle time at 11.5s, the hydraulic system features high working efficiency.



INTELLIGENT INDEPENDENT HEAT DISSIPATION SYSTEM

The motor and fan speeds are intelligently adjusted based on the actual temperature to maintain the working temperature at the most appropriate temperature, improve the fuel efficiency, and save the energy by 5% for the machine.



EFFICIENT

BEST OPERATING ENVIRONMENT

The cab with super-large space and good sealing performance is fitted with full-coverage exquisite interior trim parts and the damping and noise reduction measures for the cab and engine hood realize $\leq 78\text{dB(A)}$ operator's parotic noise to build a comfortable operating environment.

The air cushioned composite control seat equipped is easily adjustable in vertical and longitudinal directions to realize comfortable operations.

The freely adjustable steering column and the ergonomically arranged control units and buttons are easily accessible to achieve excellent operability.

The pilot joystick incorporates the FNR function to realize the single-joystick control on the operations of the machine, featuring easier and faster operations.



ENLARGED BUCKET CAPACITY

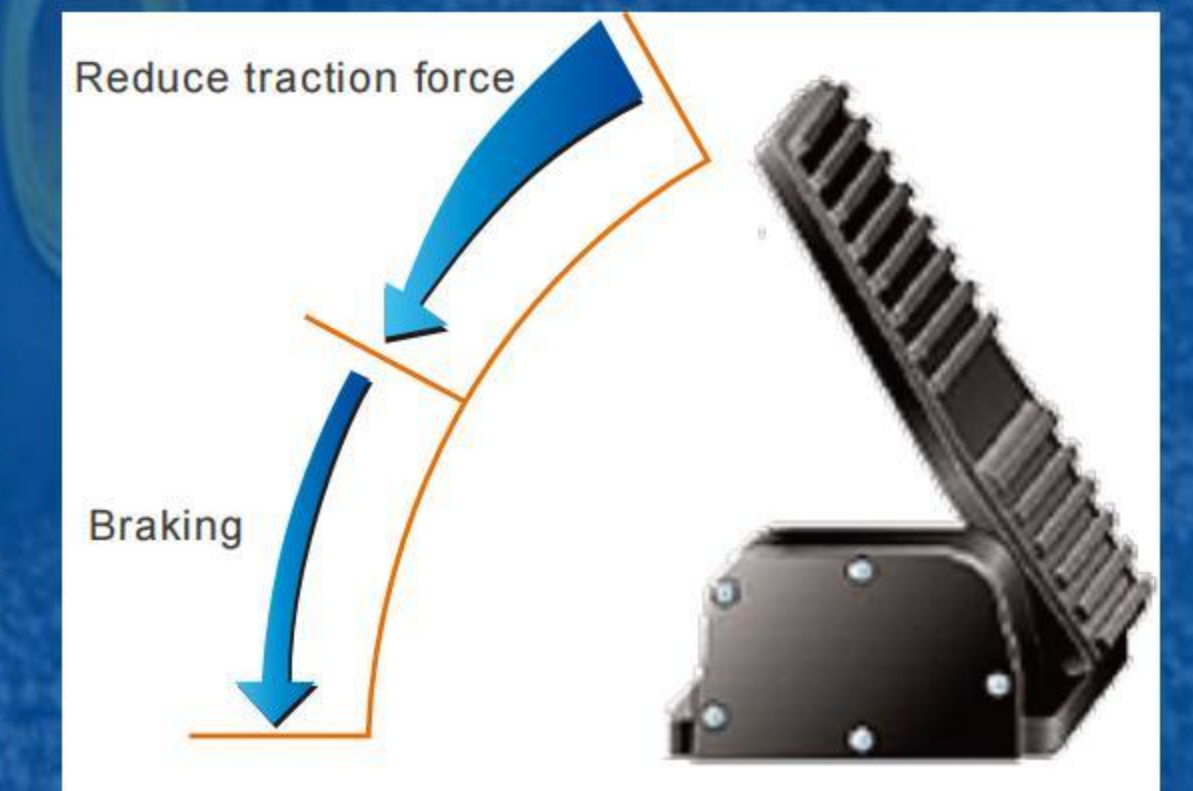
The silicone oil shock absorbers are adopted to connect the cab with the frame to realize the flexible vibration transmission and remarkably reduce the jitter within the cab.

All-new digitalized combination instrument features high elegance and visualization degree.

Standard MP3 player, AM/FM radio, and luxury loudspeaker system.

The high power heating and air conditioning system with intelligent temperature control and the pressurized cab provide you with a super-quiet and dust-free comfortable operating environment with appropriate temperature.

The double-pedal brake with application of composite brake technology features high elegance. The adjustable clutch changes along with the change of pedal angle and the torque inputted from the transmission to the drive axle to minimize the impact and generated heat during braking and improve the comfort and realize energy-conservation and consumption reduction.



ENERGY SAVING AND ENVIRONMENTAL FRIENDLY

HIGH SAFETY AND COMFORT

The integral structure and built-in skeleton of the cab protect the cab against rollover and falling objects.

The large-arc hyperboloid glasses achieve broad visual field.

The reversing monitoring system is equipped to reduce the rearview blind zones and improve the working safety.



CONVENIENT MAINTENANCES

XCMG takes the user's convenient maintenances as the important design concept. All maintenance points are easily accessible to improve the safety, shorten the maintenance time, and ease the daily maintenances.

NEW SKELETON STRUCTURE ENGINE HOOD

The new skeleton structure engine hood and the large side gates boast large opening angle and make the checking, repair, and maintenance easier for the engine and radiator.

The engine oil filter, fuel filter, and transmission filter are easily accessible to achieve convenient maintenances.



RADIATOR WITH LARGE FIN SPACING

The radiator adopts the single row parallel structure with large fin spacing to realize good heat dissipation performance, easy cleaning, and high blockage resistance and perfectly adapt to diversified heavily dusty working conditions.

The fan incorporates the reverse rotation function to ease the cleaning of radiator.



SERVICE CONVENIENCE

CENTRAL LUBRICATION

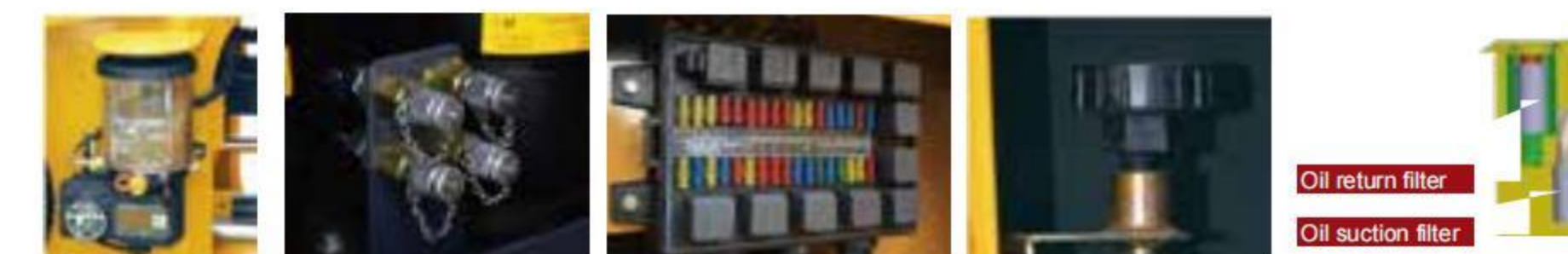
The lubricating grease is pumped automatically to all lubricating points periodically and quantitatively to ensure the normal and lasting running of various friction points.

Pressure measurement device: The pressure measurement ports for hydraulic system and transmission system are concentrated to ease the checking and maintenance of the system.

The central fuse case: The running status of electric system is centrally indicated to ease the maintenances.

The powder sintered dustproof ventilator: It features high firmness and reliability and easy maintenances.

The independent chamber design for oil return line of hydraulic oil tank: It guarantees the convenient maintenances.



GPS SYSTEM

Through the GPS terminal system, the operation and maintenance situations of the machine can be timely and accurately understood and the construction status of the machine and the running data of the engine can be mastered.

ELECTRONIC MONITORING AND SOUND-LIGHT ALARM

The high reliability multi-functional combination instrument equipped accurately monitors the running status of the engine and accurately reads the malfunctions of engine and transmission via CAN bus communication technology. With sound-light alarm and indication, the LCD screen accurately displays the running status of the whole machine.



CUSTOMER SUPPORT

To guarantee the users' trouble-free use of products, XCMG launched the babysitting "Three-Dedicated Service" (Dedicated person, dedicated vehicle, and dedicated garage).

Oriented towards the full lifecycle, this service covers all products both within and beyond the warranty scope to create lifelong guarantee for the products.



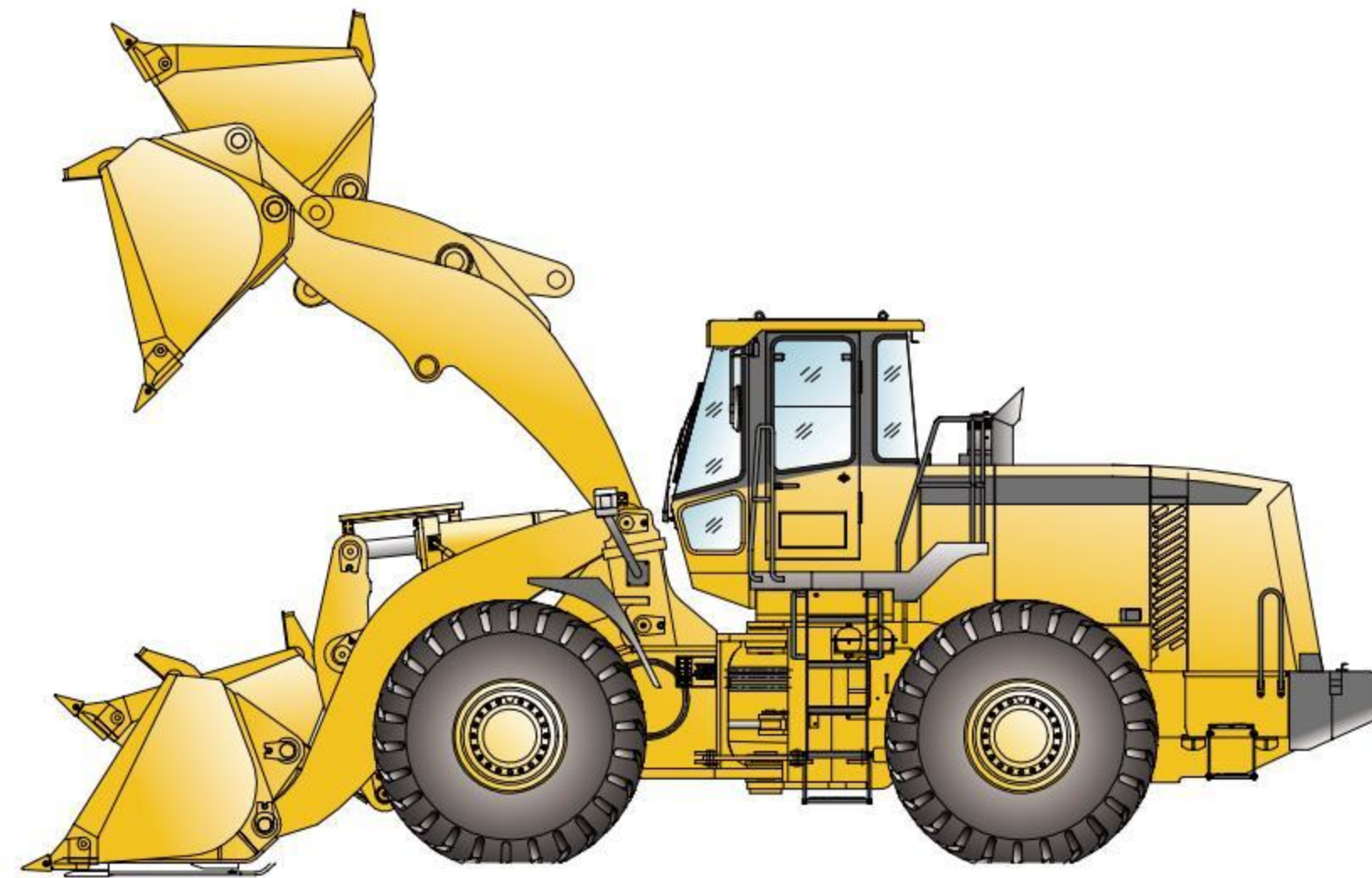
MAIN PARAMETERS

Items

Rated operating load	9000	kg	
Bucket capacity	5.5	m ³	
Machine weight	30500	kg	
Dumping height	3380	mm	
Dumping distance	1450	mm	
Min. ground clearance	500	mm	
Wheel base	3600	mm	
Tread	2460	mm	
Height of hinge at maximum lift height	4600	mm	
Working height(fully lifted)	6250	mm	
Max.breakout force	≥260	kN	
Max.horse power	≥260	kN	
Hydraulic cycle time-raise	6.8	s	
Total hydraulic cycle time	12.2	s	
Min. turning radius over tyres(bucket edge)	≤7460	mm	
Min. turning radius over tyres(tire center)	≤6400	mm	
Articulation angle	±38	°	
Gradeability	25	°	
Tyre size	29.5R25		
Overall machine dimension L×W×H	9400*3430*3770	mm	
Engine Model	X12		
Rated Power/Speed	277/2100	kW/rpm	
Displacement	11.8	L/cc	
Maximum torque	1898/(1200-1600)	KN/rpm	
Overall machine dimensions L×W×H	1295*992*1000	mm	
engine weight	860	Kg	
Fuel Tank	420	L	
Hydraulic Tank	180	L	
Travel speed	I -gear(F/R)	6.5/6.5	km/h
	II -gear(F/R)	11.6/11.6	km/h
	III-gear(F/R)	24.5/24.5	km/h
	IV-gear(F)	35/-	km/h



OUTLINE VDIMENSIONS



SPECIFICATION OF VARIANT ATTACHMENTS

Item	Log clamp I	Log clamp IV (offset tooth)	Toad's mouth clamp	Interchangeable paired/staggered clamp	Grasping grass machine	Pallet fork	Snowplow	Unit
Dump clearance at maximum lift(front dump)	2910	3120	2970	3150	3200	/	/	mm
Reach at maximum lift(front dump)	1660	1660	1650	1730	2050	/	/	mm
Dump clearance/reach at maximum lift (side dump)	/	/	/	/	/	/	/	mm
overall hight at maximum lift	/	/	/	/	/	3860	/	mm
Max. dumping angle(work tool)	40	36	42	30	24	26	/	°
Max.opening	2280	1550	1900	1660	2900	/	/	mm
Max. clamping diameter	1000	100	1000	130	1470	/	/	mm
Max.working width(snowplow)	/	/	/	/	/	/	3800	mm
Slewing angle (horizontal)	/	/	/	/	/	/	±35	°
Swing angle (snowplow)	/	/	/	/	/	/	±6	°
Rack back angle at ground	17	24	17	28	11	23	/	°
Length(work tool)	2050	1745	2160	1950	2330	1950	1935	mm
Width(work tool)	2200	2350	1760	2500	2580	2500	3800	mm
Height(work tool)	1630	1440	2030	1400	1930	1290	1005	mm
Tine length(pallet fork)	/	/	/	/	/	1220	/	mm
Overall machine dimensions-length	8650	8646	8778	8487	8840	8454	8578	mm
Overall machine dimensions-width	2850	2850	2850	2850	2850	2850	3800	mm
Overall machine dimensions-height	3515	3515	3515	3515	3515	3515	3515	mm

LW900KN YOUR BEST HELP

— Drive axle

maintenance-free full hydraulic wet drive axle, safe and reliable

— Transmission

automatic power shift transmission, automatically adjust the loader gear to ensure that the loader is working in the most efficient and energy-saving state

— Cab

FOPS&ROPS certified safe and comfortable cab with ergonomically designed interior to provide the driver with an excellent operating environment.

— Intelligent hydraulic system

load-sensing variable hydraulic system, supply on demand, automatically adjust the supply of hydraulic system capacity, reduce fuel consumption



— Easy to maintain

The integral electric back-flip hood + upturnable rear baffle cover is convenient for maintenance service to overhaul the equipment.

— Tools

XCMG can provide you with a variety of tools to meet individual needs and improve production efficiency.

— Z-Linkage System

XCMG has deeply optimized the traditional Z-Linkage for great power in any position.

— Intelligent hydraulic system

Through the reasonable matching of engine and gearbox, the response of the whole machine is faster, and the fuel consumption of the whole machine is reduced by 10%.