

SOLID TO SUCCEED

WZ30-25



BACKHOE LOADER





Description & Features

- ▼ As a classic model created by XCMG Construction Machinery Co., Ltd, WZ30-25 is an innovative heavy-duty backhoe loader developed according to extensive market research, which not only absorbs the sophisticated design and mature process of the previous generation, but also meets the updated emission standards for non-road mobile machinery.
- ▼ WZ30-25 equipped with Yuchai China II emission engine, Shantui transmission and torque converter, 3-ton reinforced drive axle and high-efficiency and energy-saving hydraulic system, WZ30-25 features high power performance: a maximum tractive force over 70kN and maximum breakout force up to 80kN. It is ideal for a variety of applications, such as municipal and highway construction and maintenance, water conservancy, army rescue and disaster relief operations and equipment support.

Description & Features



- ▼ High-output China II engine with excellent power performance
- ▼ XCMG unique super-robust heavy-duty structural parts without redundant weight
- ▼ Super-long wheelbase, outstanding work capability and incomparable stability
- ▼ Digging end configured with dual limit for rotation – first flexible, then rigid, ensuring reduced impact and improved comfort during operation

Excellent power transmission and environmental friendliness



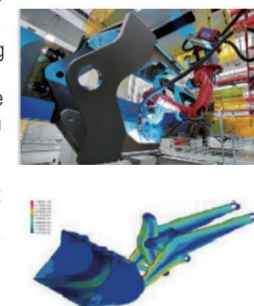
- High-quality engine from well-known brand, specially designed, manufactured and verified according to operating conditions of construction machinery, meeting China II emission standard, and featuring higher efficiency, reduced energy consumption and lower noise level.
- Sophisticated transmission from well-known brand, designed with hydraulic control, as well as 4 forward and 2 reverse gears, featuring large load capacity, high work efficiency, easy and simple operation, and full adaptation to various complex operating conditions.
- Heavy-duty drive axles for construction machinery, featuring stable quality, reliable performance and easy maintenance



Safe brake system



- Air over hydraulic four-wheel service brake, combining excellent start-up performance and outstanding safety on complex road conditions such as slopes; "two-in-one" designed for integrated parking brake and emergency brake, featuring low air pressure protection to ensure safe driving and reliable parking.
- Based on CAE simulation optimization design, the Z-type reverse six-linkage structure integrated with single rocker arm, short tie rod and horizontal boom cylinder features superior operating performance and efficiency.
- A retaining block is provided to ensure that the bucket retraction limit block is in close contact with the boom when transporting materials, so as to prevent materials from falling.
- The digging unit is designed with a straight-arm box structure which is commonly used in the world, not only to meet the requirements of digging radius and depth, but also improve the stability of the digging unit.
- The main wear parts of the shovel and digging buckets are made of wear-resistant plates to prolong the service life.



Advanced and reliable hydraulic system



- Both the loading operation and the steering system are supplied by the loading pump, and the priority valve is used to realize the steering function with a priority flow. The machine is mechanically controlled with two joysticks,
- inheriting the conventional operation method used by loaders.

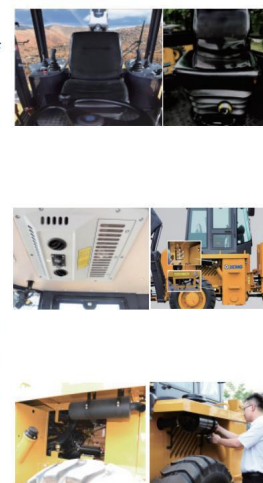
XCMG quantitative load sensing system, designed according to the digging conditions of backhoe loader, is able to perform combined digging actions smoothly and precisely. Pilot control enables intuitive and simple operation, which is truly comparable to the operation and control experience of an excavator.



Comfortable and convenient operation



- Thanks to ergonomic design, spacious room, wide field of view, and rotatable operation based on advanced technology, it is able to realize seamless switchover of loading and digging operations, and improve the comfortable and convenient driving experience.
- All maintenance points for oil level inspection, fuel, oil and grease filling, etc., are easily accessible, and the maintenance and replacement of air filter elements and electrical equipment can be carried out conveniently. A centralized water and oil drain block is configured to enable simple and efficient draining of water and oil.

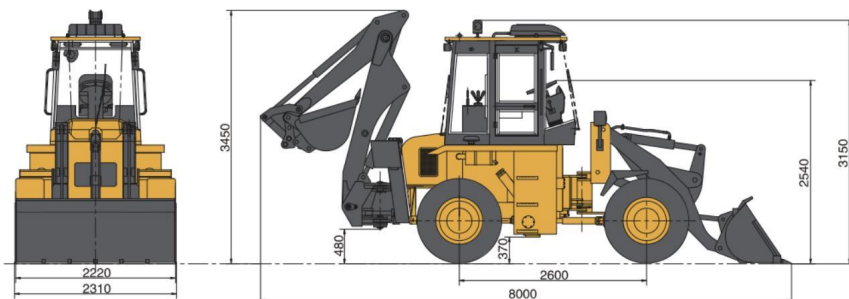


Main Specifications

OPTIMUM SERVICES XCMG GUARANTEED



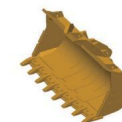
Dimensions



Specifications

Item	Parameter	Unit	System category	Specification	WZ30-25
Engine	Engine rated power/rated speed	65/2200	Engine	Brand & specification	YC4B90-T20
	Overall length	8100		Type	Four-cylinder, electronically-controlled unit pump
	Overall width	2310		Displacement	3.621
	Overall height	3424		Emission standard	China II
Dimensions	Operating weight	9500	Transmission, torque converter	Brand & specification	YJ315X, BYD4208
	Max driving speed	33		Type	Mechanical shift
Operating weight	Max gradeability	≥20	Drive axle	Gears	Forward 4 reverse 2
	Turning radius (outside of bucket)	5300		Specification	JINGDA dry axle
Wheel base	Max tractive force	≥70	Tyre	Specification	16/70-24
	Bucket rated capacity	1.0		Type	Open center throttle hydraulic system
Loading unit	Rated operating load	2500	Working hydraulic system	Control	Machine control for loading end, pilot control for digging end
	Max breakout force	80		Type	Full hydraulic steering
Digging unit	Max dumping height	2650	Steering hydraulic system	Service brake system	Air over hydraulic caliper disc four-wheel brake
	Max dumping range	930		Parking brake	Pneumatically-controlled parking brake
System pressure	Max digging radius	5471	Air conditioning System	Type	Cooling-only air conditioner (optional)
	Max digging depth	4440		Engine oil	180L
Max digging force	Max digging force	40	Fuel/oil filling quantity (for reference)	Antifreeze	13L
	System pressure	20		Drive axle oil	27L
System pressure	Backhoe bucket rated capacity	0.30		Hydraulic oil	200L
	Max digging radius	5471		Transmission oil	30L
Max digging depth	Max digging depth	4440			
	Max digging force	40			
System pressure	System pressure	20			

- The technology of XCMG backhoe loaders is subject to constant improvement and upgrading. In case the specifications or detailed appearance contained in this brochure differ from actual products, the latter shall prevail;
- XCMG reserves the right of final interpretation for the above. Our products may be modified without prior notice to users.



XCMG approved attachments



Genuine parts



Financial solutions



Maintenance contract



Telematics

Professional Integrated Complete Solutions

XCMG has built a strong reputation based on the quality, reliability and durability of its construction machinery. What's more, XCMG has gradually established a service network to constantly provide its local integrated and highly efficient complete solutions for all customers.

Full Range of Services Ready for you

In order to respond to your needs as fast as possible, XCMG's experts are on their way to your job site from one of our facilities near you. Full range of services are available in order to reduce your total cost of ownership and increase your revenue.



XCMG Global Spare Parts System

