



SOLID TO SUCCEED

XC8-C2570 BACKHOE LOADER





About XCMG

As a 100 billion-level leading company renowned for the largest scale, the most advanced technology, the largest export volume, and the highest competitiveness and influence in China's construction machinery industry, Xuzhou Construction Machinery Group Co., Ltd. (XCMG) not only has dominated the Chinese market for decades, but also is committed to expanding its worldwide presence as the third largest supplier in this field and 395th of Global 500.

The product portfolio offered by XCMG covers 16 categories such as hoisting machinery, excavation machinery, concrete machinery, mining machinery, earthmoving machinery, and road construction machinery, as well as three key components, i.e., hydraulic systems, transmission systems and electrical control systems. In these areas, our hoisting machinery ranks first in the world, and our complete solutions for road construction and maintenance machinery, piling machinery and concrete machinery also take the leading position in global rankings.

XCMG has been granted more than 8,000 patents in total, including more than 1,900 invention patents and more than 130 international PCT patents.

We have established our own R&D centers, manufacturing plants or KD factories in more than 10 countries, e.g., Germany, USA, Brazil and India, and have acquired 3 European companies including Schwing from Germany.

The manufacturing factory in Brazilian, which is built on a barren land with an investment of USD 350 million, has become a successful model of China-Brazil economic cooperation. At present, our products are exported to 187 countries and regions, covering 97% of the countries along the "Belt and Road". XCMG takes the largest share of the business exported to 35 countries, with the annual export volume and overseas revenue remaining in first place and outperforming all other competitors in China.





Description & Features

- ▼ Relying on XCMG global R&D platform, XCMG Construction Machinery Co. Ltd., according to its deep insight of customer needs, launched a brand new XC8-C2570 backhoe loader with excellent reliability, environmental adaptability, safety, maintainability, maneuverability and cost effectiveness.
- ▼ XC8-C2570 backhoe loader is equipped with a DC or SDEC MAR-I engine, ZF or XCMG electronical-controlled shift transmission for backhoe loader, XCMG heavy-duty drive axle with wet brake for backhoe loader, brand new cab with super-wide field of view (FOV), and a super-large-angle flip-back hood. This backhoe loader provides a luxurious driving experience, along with high efficiency in operation, making it an ideal equipment for municipal and highway construction and maintenance, water conservancy, army rescue and disaster relief operations, and equipment support.
- ▼ Relying on XCMG professional power matching technology, XC8-C2570 backhoe loader is able to ensure reduced fuel consumption, but excellent power performance: a maximum tractive force over 70kN, a maximum breakout force up to 66kN, and a maximum digging force up to 63kN.

Description & Features



- ▼ Controllable dual-pump confluence optimization technology. Users can independently set the working state of single or double pump according to the needs of operating conditions, so as to improve work efficiency and reduce fuel consumption.
- ▼ Front and rear wheels micro differential drive technology. The optimal differential ratio is designed between front and rear wheels in order to ensure high performance in various operating conditions, and minimize driving resistance and fuel consumption.
- ▼ Automatic switchover to the two-wheel drive mode at high speed in order ensures economy and safety.
- ▼ Innovative appearance and brand new cab with super-wide field of view (FOV). Adopting XCMG family-style design with smooth lines, aesthetic appearance and practical functionality, brand new luxurious cab designed with super-wide field of view and large internal space, ensuring higher comfort, safety and reliability.
- ▼ A variety of operating tools and hydraulic quick couplings are optional to realize one machine with multiple functions.

Main features

Main features



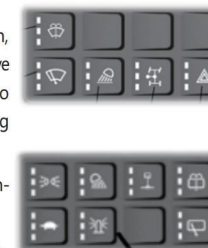
Higher power:

- Equipped with an electronically-controlled turbocharged high-pressure common rail engine, featuring extraordinary torque output to easily deal with server operating conditions;
- Power shift transmission controlled with CAN cable, ensuring perfect matching with the engine;
- XCMG heavy-duty drive axle with wet brake for backhoe loader, featuring higher load capacity.



Cost-effectiveness and efficiency:

- Optimal matching between power and transmission systems, combined with high-efficiency hydraulic system, significantly improving work efficiency;
- Switchover between two-wheel drive and four-wheel drive with one button, supporting custom setting according to operation conditions to improve the utilization rate of engine power; configured with rear wheel micro differential transmission, effectively reducing driving resistance and saving energy by more than 10% on average;
- Controllable dual-pump confluence technology, combined with the incomparable lifting and digging force, significantly improving work efficiency.
- Equipped with 1.0m³ shovel bucket and 0.2m³ digging bucket as standard, ensuring lower insertion resistance and higher bucket fillability due to optimized bucket shape.



Safety and reliability:

- All key structural parts are made of high-strength steel, and the design is verified by finite element analysis (FEA) tools to guarantee high reliability. The fatigue destructive test is conducted for millions of cycles, in order to ensure normal operation in all server conditions;
- Robot-based welding for high weld consistency and stable weld quality;
- Automatic switchover to the two-wheel drive mode at high speed in order ensures economy and safety.
- Noise reduction analysis and flow field analysis for the muffler to ensure optimal performance.



Aesthetic and comfortable design:

- Innovative appearance and brand new cab with super-wide field of view, adopting XCMG family-style design with smooth lines and luxurious interiors. All doors and windows can be opened selectively to ensure 360° field of view; the steering column can be adjusted up and down, forward and backward; spacious legroom provides a comfortable working environment for the operator;
- Ergonomic joystick and function buttons, ensuring easy and comfortable operation;
- Concealed intelligent high-power air conditioner with heating and cooling modes, able to maintain constant temperature and defrost with warm air.



Main features

XCMG intelligent management system



Easy maintenance:

- Integrated super-large-angle flip-back hood, ensuring one-stop maintenance and simple service.
- Centralized pressure measurement system, convenient for routine inspection.
- Accessible maintenance points, ensuring easy and fast maintenance.
- CAN-bus control instruments, checking machine information with one button, supporting auxiliary fault diagnosis and analysis.



Easy to control with one hand

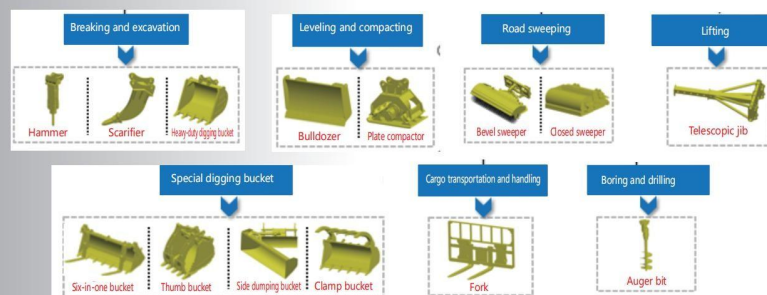
- ▼ Enable the user to check the operation and maintenance status of the machine in real time via a mobile phone, PAD, computer and other devices, and to make accurate evaluation of the project and select suitable tools accordingly through data collection and analysis.



- Optimize device matching
- Increase productivity
- Improve management efficiency
- Reduce operating costs
- Minimize operational risks
- Optimize profitability

One machine with multiple functions:

- The loading and digging ends can be configured with optional hydraulic quick couplings to connect a variety of tools, realizing one machine with multiple functions.



- ▼ Provide the "full-life-cycle service" for worry-free experience in the whole service life! Build a world-wide service network covering the whole planet!
- ▼ Implement a global digital spare parts service system to provide digital services conveniently, quickly and efficiently!

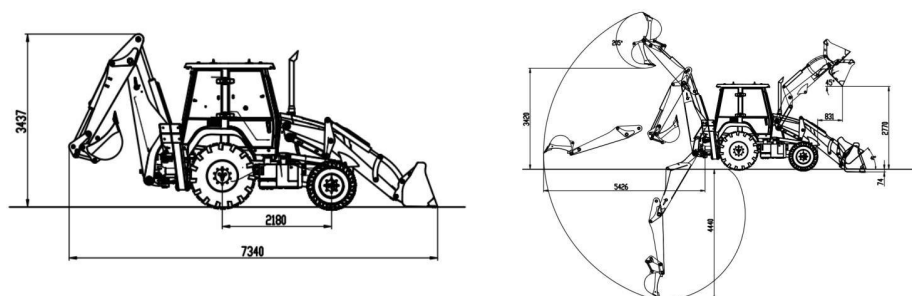


Main Specifications

OPTIMUM SERVICES XCMG GUARANTEED



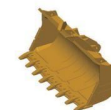
Dimensions



Specifications

Item	Parameter	Unit	System category	Specification	XC8-C2570
Overall Dimensions	Engine rated power/rated speed	72/2200/73.5/2200	Engine	Brand & specification	YC4DK100-T304
	Overall length	7340		Type	Hourly rated supercharged, high pump flow-cylinder supercharged intercooler, high-pressure common rail
	Overall width	2350		Displacement	4.04/4.3
	Overall height	3437		Emission standard	China III/MAR-I
	Operating weight	7600	Gearbox	Brand & specification	MYF110IV
Loading unit	Max driving speed	38		Type	Power shift
	Max gradeability	≥20		Gears	Forward 4 reverse 3/Forward 4 reverse 4
	Turning radius	4400	Drive axle	Specification	XCMG wet-type axle
	Wheel base	2180		Type	Specification
Digging unit	Max tractive force	≥70	Working hydraulic system	Type	Dual-pump confluence hydraulic system
	Bucket rated capacity	1.0		Control	Mechanic control, SAE mode at the digging end
	Rated operating load	2500	Steering hydraulic system	Type	Full hydraulic steering
	Max breakout force	66		Service brake system	Wet brake on rear wheel
	Max dumping height	2770	Brake System	Parking brake	Caliper brake on rear wheel
Digging unit	Max dumping range	831		Air conditioning system	Type
	System pressure	24	Fuel/oil filling quantity (for reference)	Diesel	166L
	Backhoe bucket rated capacity	0.20		Engine oil	10L
	Max digging radius	5426		Antifreeze	17L
	Max digging depth	4440		Drive axle oil	20L
	Max digging force	63		Hydraulic oil	95L
	System pressure	24		Transmission oil	18L

- The technology of XCMG backhoe loaders is subject to constant improvement and upgrading. In case the specifications or detailed appearance contained in this brochure differ from actual products, the latter shall prevail;
- XCMG reserves the right of final interpretation for the above. Our products may be modified without prior notice to users.



XCMG approved attachments



Genuine parts



Financial solutions



Maintenance contract



Telematics

Professional Integrated Complete Solutions

XCMG has built a strong reputation based on the quality, reliability and durability of its construction machinery. What's more, XCMG has gradually established a service network to constantly provide its local integrated and highly efficient complete solutions for all customers.

Full Range of Services Ready for you

In order to respond to your needs as fast as possible, XCMG's experts are on their way to your job site from one of our facilities near you. Full range of services are available in order to reduce your total cost of ownership and increase your revenue.



XCMG Global Spare Parts System

