

# XC968



WHEEL LOADER

**SOLID TO SUCCEED**



[www.wme.cn](http://www.wme.cn)



wheel loader XCMG XC968





## Description & Features

- ▼ As a new generation of XC9 series flagship product launched by XCMG Construction Machinery Co., Ltd., XC968 is an innovative wheel loader developed based on extensive market and technical research, while introducing world-leading design and manufacturing technology for high performance and cost effectiveness.
- ▼ Relying on its international R&D platform, XCMG integrates global technology R&D resources, and strives to create a new generation of loaders with up-to-date technology and independent intellectual property rights.
- ▼ This model is not only powerful, robust and reliable, but also highly efficient and energy-saving, and easy to maintain, providing more energy-saving and efficient solutions for construction sites, mines, ports, highways and other construction fields.

## Description & Features



- ▼ New XC9 platform with high-end interior and aesthetic appearance.
- ▼ Electronically-controlled transmission—XCMG heavy-duty fully automatic electronically-controlled fixed shaft transmission, obtaining a number of patents in China, and featuring outstanding reliability, operating comfort, functional diversity, and world-leading technology.
- ▼ XCMG unique super-robust heavy-duty structural parts without redundant weight.
- ▼ Super-long wheelbase, outstanding work capability and incomparable stability.
- ▼ Dual limit - first flexible, then rigid, ensuring reduced impact and improved comfort during operation.
- ▼ Ergonomic, ultra-quiet and micro-pressurized cab designed with integral frame structure, super large space and full view of field, equipped with audio, air conditioner, seat and joysticks with FNR/horn/KD buttons to ensure easy operation.





## Advanced:

- High-power electronically-controlled engine with high-pressure common rail, featuring a large torque reserve coefficient and excellent power performance.
- MYF220AT heavy-duty electronically-controlled transmission, incorporated with world-class technology and independent intellectual property rights, including 7 proprietary technologies and 2 invention patents.
- Advanced full-flow control mode, enable simple, comfortable and efficient control; integrated with independent hydraulic buffer to ensure excellent gear buffering effect.

XCMG dedicated engine (178kW)



Fully-automatic electrically-control fixed shaft transmission



www.wme.cn

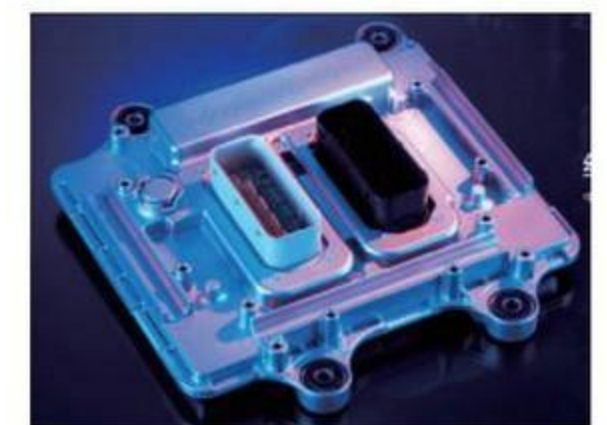


## Energy-saving:

- Equipped with a turbocharged engine for environmental protection, energy conservation, and strong power.
- Electronically-controlled fixed & shaft power shift transmission, highly efficient and energy-saving;
- Dual-pump confluence and equivalent unloading technology with steering priority valve, plus load-sensing full hydraulic steering system with coaxial flow amplification, energy-saving and efficient.

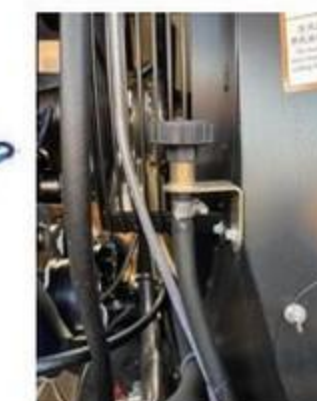
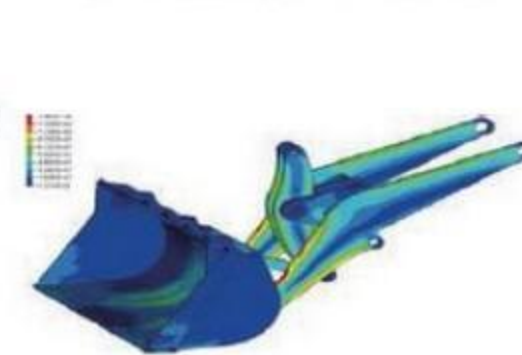
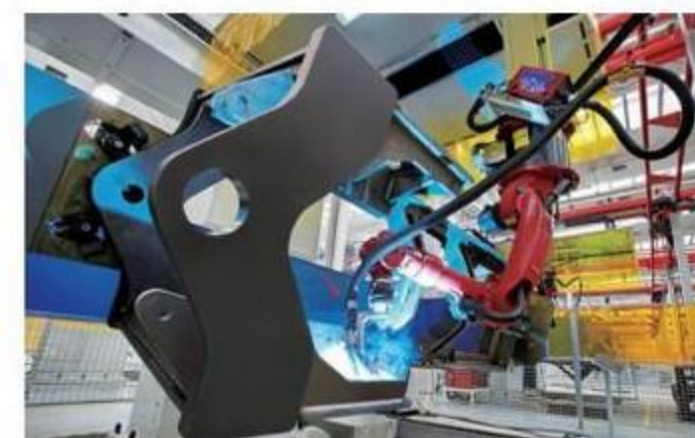
Ultra-low cost of use

- XCMG dedicated engine and torque converter
- Lightweight operating unit
- Energy-saving cooling system



## Reliable:

- Electronically-controlled fixed & shaft power shift transmission with high reliability and long service life;
- Hydraulic pipeline sealing structure comprehensively upgraded to reduce pipeline connection leakage and improve hydraulic system reliability;
- Articulation joint of the frame adopts a joint bearing to ensure reliable articulation of the front and rear frames;



## High efficiency:

- Dual-pump confluence and equivalent unloading technology with steering priority valve, plus load-sensing full hydraulic steering system with coaxial flow amplification, increasing the tractive force of the machine in combined operating conditions and improving the operation efficiency.
- Optimized operating tools designed with Z-type reverse six-linkage structure integrated with single rocker arm, short tie rod and horizontal boom cylinder, featuring superior operating performance and efficiency, and enabling full use of engine power;





## Comfortable:

- Equipped with an automatic gear shifting switch (KD function), with 4 forward and 4 reverse gears, advanced performance, providing smooth gear shifting, simplifying driver operation, and effectively reducing driver workload to meet various operating requirements of the loader;
- Adopting pilot hydraulic control for comfortable and efficient operation; full hydraulic flow amplification steering for light and flexible operation; hydraulic control for steering limit, with mechanical dual limit, and hydraulic control limit superior to mechanical limit;
- High-performance shock-absorbing seat, combined with multi-directional adjustable steering column, can meet the requirements of different drivers;



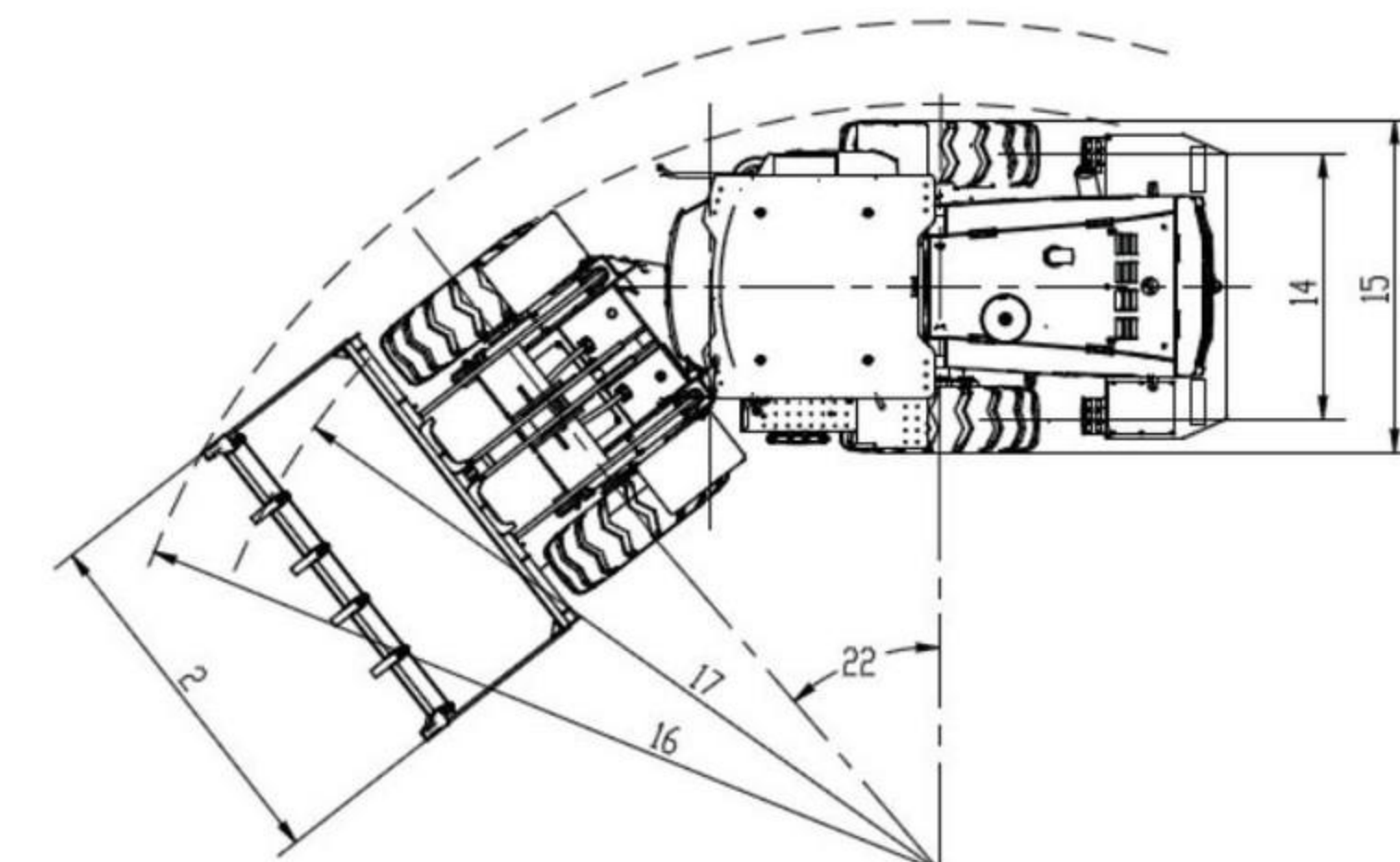
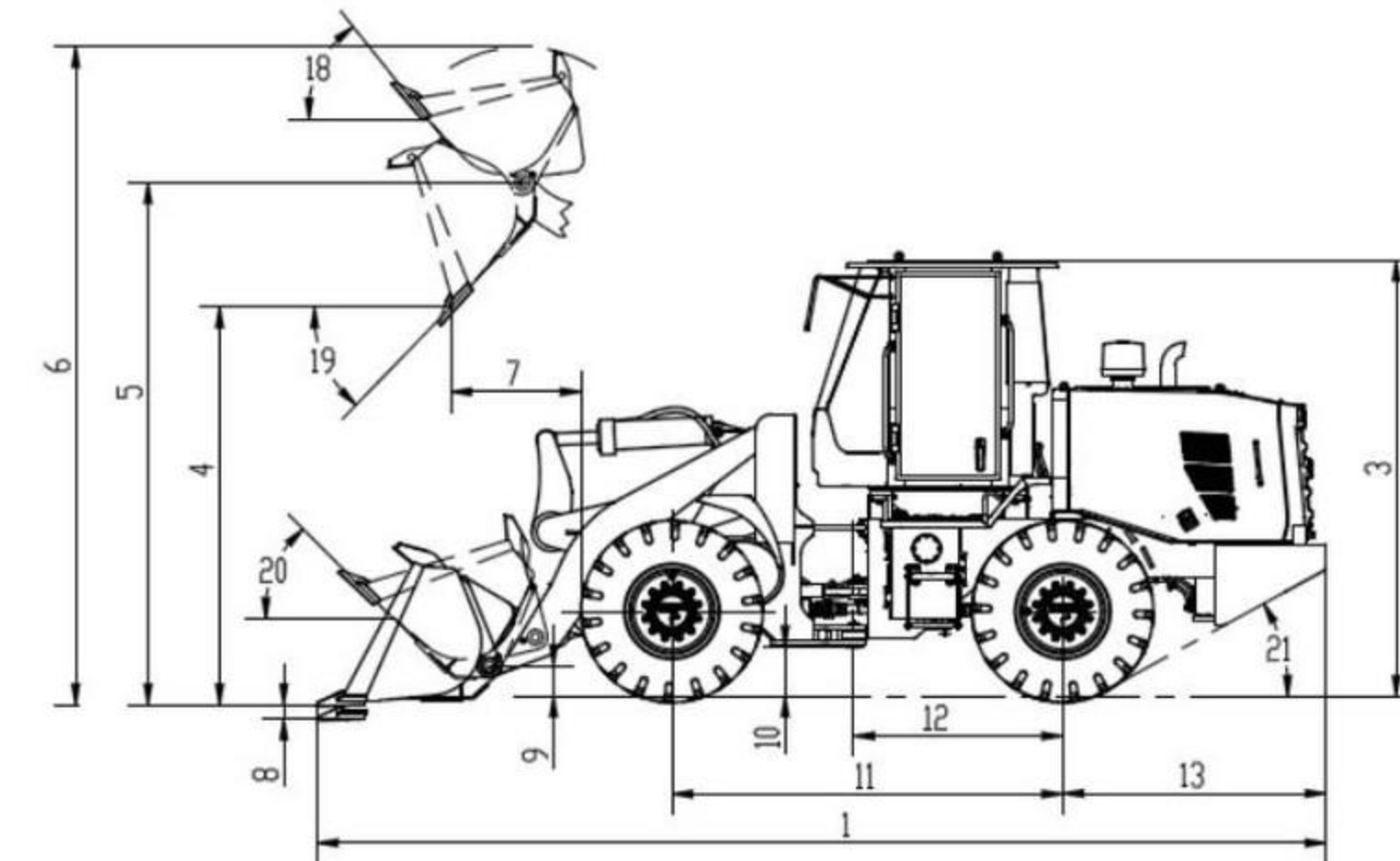
## Convenient:

- Electronic sensing systems are used for pressure and temperature measurement devices, making maintenance and service more convenient for users;
- Centralized fuse box is adopted for easier and more efficient inspection and maintenance;
- The hood designed based on flip-up frame structure is configured with a large side door with a wide opening angle, and openable rear cover, making engine and radiator inspection, maintenance and service easy and convenient.



Tool name	Parameter (mm)	Tool structure	Function and operation conditions
Paring clamp	Opening:2350 Holding circle:900 Width:2324		Function: Loading, unloading and transportation of wood, boards and other materials. Main applications: Ports, docks, timber processing, forest farms, etc.
Clamp (staggered)	Opening: 2215 Holding circle:360 Width:2240		Function: Loading, unloading and transportation of wood, boards and other materials. Main applications: Ports, docks, timber processing, forest farms, etc.
Side dumping bucket	Bucket capacity:3.5 Width:3188		Function: Loading and unloading. Main applications: Tunnels.

## Dimensions





## Specifications

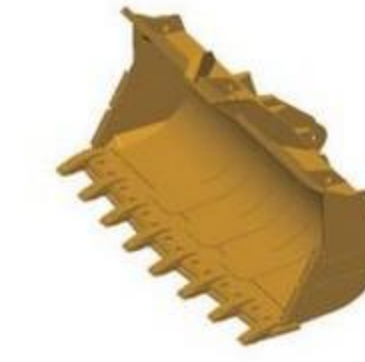
Parameter	XC968 standard arm	
	3.5 m <sup>3</sup>	4.0 m <sup>3</sup>
Overall length mm	8535	8610
Overall width mm	3200	3200
Overall height mm	3455	3455
Dumping height mm	3180	3040
Pivot height mm	4270	4270
Maximum lift height mm	5780	5790
Dumping range mm	1185	1325
Digging depth mm	120	120
Transport pin height mm	560	560
Min ground clearance mm	425	425
Wheel base mm	3450	3450

Parameter	XC968 standard arm	
	3.5 m <sup>3</sup>	4.0 m <sup>3</sup>
From the center of rear axle mm	1725	1725
Rear overhang length mm	2140	2140
Wheelbase mm	2265	2265
Mainframe width mm	2860	2860
Turning radius (outside of tool) mm	6950	5755
Turning radius (outside of tyre) mm	6193	6193
Rollback angle during lifting °	57	57
Dumping angle °	45	45
Dumping angle at transport position °	49	49
Departure angle °	29	29
Vehicle steering angle °	40	40

Parameter	Parameter
Rated load kg	6300
Rated bucket capacity m <sup>3</sup>	3.5
Rated power kW	178
Working mass kg	20000±300
Max tractive force kN	175±5%
Max breakout force kN	≥200
Wheel base mm	3450
Wheel track mm	2265
Dumping height mm	3180
Dumping range mm	1185
Boom lifting time S	≤5.6
Total S	≤10
Max gradeability °	29±1
Steering angle °	40±1
Speed at Gear 1 (forward/reverse) km/h	6.0/6.0
Speed at Gear 2 (forward/reverse) km/h	11.0/11.0
Speed at Gear 3 (forward/reverse) km/h	20.0/20.0
Speed at Gear 4 (forward/reverse) km/h	34.0/34.0
Five-speed gears (forward/reverse) km/h	/
Overall dimensions (L × W × H) mm	8535×3200×3455

System category	Specification	XC968
Engine	Type	In-line, four-stroke, water-cooled, turbocharged, direct injection
	Displacement	9.726L
	Emission standard	Non-road China II
Gearbox	Type	Electro-hydraulic fixed shaft shift
	Gears	Forward 4 / reverse 4
Drive axle	Brand and form	XCMG dry-type axle
Tyre	Standard specifications	23.5-25PR
Working hydraulic system	Type	Dual-pump convergence
	Operation mode	FNR pilot control
Steering hydraulic system	Type	Flow amplification
Brake System	Service brake	Air over hydraulic, caliper disc four-wheel brake
	Parking brake	Pneumatic internal expanding shoe brake
Air conditioner		Cooling and heating
Fuel/oil filling (for reference)	Diesel L	300
	Engine oil L	22
	Antifreeze L	45
	Drive axle oil L	40/36.5
	Hydraulic oil L	150
	DEF L	/
Brake fluid L		3

- The technology of XCMG backhoe loaders is subject to constant improvement and upgrading. In case the specifications or detailed appearance contained in this brochure differ from actual products, the latter shall prevail;
- XCMG reserves the right of final interpretation for the above. Our products may be modified without prior notice to users.



XCMG approved attachments



Genuine parts



Financial solutions



Maintenance contract



Telematics

## Professional Integrated Complete Solutions

XCMG has built a strong reputation based on the quality, reliability and durability of its construction machinery. What's more, XCMG has gradually established a service network to constantly provide its local integrated and highly efficient complete solutions for all customers.

## Full Range of Services Ready for you

In order to respond to your needs as fast as possible, XCMG's experts are on their way to your job site from one of our facilities near you. Full range of services are available in order to reduce your total cost of ownership and increase your revenue.



## XCMG Global Spare Parts System

