

# XC998



WHEEL LOADER

 **SOLID TO SUCCEED**



wheel loader XCMG XC998



## Transmission system



- Engine: China III EFI turbocharged engine from a world-class brand, integrated with air-to-air intercooler, electric start & flameout, and three-stage desert air filter suitable for dusty conditions, feature not only higher reliability and adaptability, but also lower fuel consumption and emission, and is ideal for various operating conditions. The hydraulic driven electronic control intelligent heat dissipation system can adjust the fan speed according to the heat dissipation requirements of each system, realizing energy conservation, high efficiency and optimal performance; it has a manual reverse function to clean the radiator better and reduce routine maintenance time.
- Transmission: The torque converter and transmission system adopts transmission from a world-class brand, with 4 forward gears and 3 reverse gears, featuring electronically-controlled gear shifting, as well as KD gear and neutral start functions; the large-capacity torque converter featuring efficient transmission can assure higher operation efficiency and cost effectiveness; the joystick for operating unit is integrated with FNR switch and KD gear (one stick), enabling quick and easy steering of the machine, reducing the shoveling and loading cycle of the machine.
- Drive axle: The drive axle is a wet drive axle from a world-class brand with maintenance-free compound wet brake block, extending the service life of the axle; the front axle has a differential locking function, improving the overall trafficability of the machine under harsh working conditions. Thanks to 29.5R25 low-pressure radial tires with minimal rolling resistance and reduced wear, combined with swingable rear axle ensuring excellent off-road performance and passability, the vehicle is suitable for driving and working even on rough roads.

## Hydraulic system



- Incorporated with load-sensing fully-variable displacement hydraulic system, the machine is able to deliver the pressure and flow according to the needs of various tools, eliminating overflow loss, and significantly improving fuel efficiency and productivity; the work control system adopts dual pump confluence technology, prioritizing steering, further improving work efficiency.
- It adopts load sensing, flow amplification, full variable hydraulic combined steering, making operation easy and flexible, saving energy, reducing consumption; the steering limit is a mechanical and hydraulic dual limit, reducing steering impact, improving the driver's operating comfort and overall reliability.
- The second steering assistance system ensures that the entire machine still has steering function when it is towed by a trailer in the event of loss of power, improving the safety and reliability of the entire machine during driving.

## Braking system



- It adopts fully hydraulic dual circuit wet service braking and caliper disc parking brake, with independent front and rear axle braking and low pressure alarm protection. Emergency braking and parking braking are combined to assure your safe operation and driving. The excellent MICO braking components further enhance the reliability of the braking system.

## Cab and control system



- XCMG's innovative FOPS&ROPS micro-pressurized cab features large space, wide field of view and excellent sealability. The silicone shock absorber is connected to the frame, which greatly reduces the vibration of the cab. The airbag shock-absorbing seat with composite control can improve the riding comfort; and the air conditioner designed with heating and cooling modes supports intelligent temperature control to provide the operator with a suitable temperature all the time.

## Frames



- The structural components and linkage mechanisms focus on the overall structural strength, and are optimized and verified through finite element analysis and load spectrum based fatigue tests for heavy-duty loader structural components, reducing stress concentration areas, eliminating local weaknesses, and fully assuring the strength requirements of structural components that withstand rough and uneven road surfaces.
- Increased distance between the upper and lower hinge pins at the pivot point, distributing and reducing the stress of the hinge pins, and improving the service life of the bearings.
- Lower hinge pin equipped with double tapered roller bearing to increase the load capacity and improve the stability during driving.
- Introducing welding toe fatigue life improvement technology to prevent welds from cracking when the vehicle is operating under severe conditions.
- Adopting powder electrostatic coating and special anti-corrosion technologies to solve the problem of corrosion.

## Working device and bucket



- Optimized operating tools designed with Z-type reverse six-linkage structure integrated with single rocker arm, short tie rod and horizontal boom cylinder, featuring superior operating performance and efficiency.
- Automatic bucket leveling at any position, eliminating the trouble of adjusting the bucket when carrying out the excavation cycle again, and simplifying the driver's operation.
- All hinge pins designed with dust-proof lubrication structure to prevent grease from dust and contamination, and provide reliable protection for hinge pins and bushings, and configured with centralized lubrication system as standard to minimize maintenance time.
- Bucket made of high-strength wear-resistant plates to ensure higher durability.

## Centralized lubrication system



- The centralized lubrication system of domestic brands has been fully verified by the market, showing outstanding performance and reliable quality. With proper pump pressure, the grease is pumped to each lubrication point according to the specified interval and quantity, so as to maintain a reliable and sufficient oil film between each friction pair and ensure normal operation of the machine for a long time. The lubricating system overcomes disadvantages of labor-intensive manual filling of grease, and difficult control of the quantity and interval of lubricant refilling.

## Reversing image and GPS technology



- The advanced reversing camera provides the driver with a wider rear field of view, guaranteeing the reliability and safety during operation.

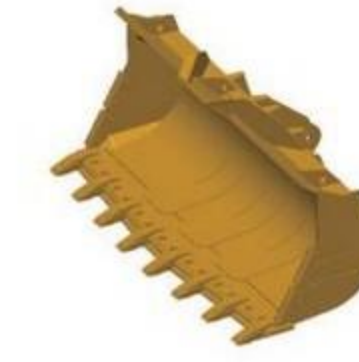


## main components

Item	Parameter	
Rated bucket capacity /m <sup>3</sup>	5.4	
Rated working load /kg	10000	
Operating weight /kg	32000	
Dumping height /mm	3370	
Dumping reach /mm	1340	
Wheelbase /mm	3700	
Track /mm	2460	
Minimum ground clearance/mm	480	
Overall length /mm	9560	
Overall height /mm	3770	
Bucket width /mm	3500	
Maximum breakout force/kN	≥260	
Maximum traction force/kN	≥270	
Turning radius (Center of Tire) / mm	≤6400	
Boom lifting time /s	≤6.5	
Total cycle time s	≤11.5	
Engine	Model	X12
	Nominal power kW	277
	Nominal power r/min	2100
Tire	29.5R25	
Travel speed (km/h)	1 forward/reverse gear	6.5/6.5
	2 forward/reverse gear	11.5/11.5
	3 forward/reverse gear	24.5/24.5
	4 forward gear	35

• The technology of XCMG loader is subject to constant improvement and upgrading. In case the specifications or detailed appearance contained in this brochure differ from actual products, the latter shall prevail;

• XCMG reserves the right of final interpretation for the above. Our products may be modified without prior notice to users.



XCMG approved attachments



Genuine parts



Financial solutions



Maintenance contract



Telematics

## Professional Integrated Complete Solutions

XCMG has built a strong reputation based on the quality, reliability and durability of its construction machinery. What's more, XCMG has gradually established a service network to constantly provide its local integrated and highly efficient complete solutions for all customers.

[www.wme.cn](http://www.wme.cn)

## Full Range of Services Ready for you

In order to respond to your needs as fast as possible, XCMG's experts are on their way to your job site from one of our facilities near you. Full range of services are available in order to reduce your total cost of ownership and increase your revenue.



## XCMG Global Spare Parts System

