



# 01 强大的驱动系统 高效的动力输出

Powerful Drive System

## Efficient Power Output



选用康明斯原装进口全电控 QSK50 发动机，此款发动机系康明斯大马力经典款发动机，具有可靠性高、动力强劲、燃油经济性好、使用寿命及大修周期长等特点。满足欧美非公路第二阶段排放标准 (Tier 2/Stage II)

名称	单位	XE5600
发动机型号		康明斯QSK50
控制方式		全电控直喷
额定功率/转速	Kw/rpm	1119/1800
最大扭矩	N.m/rpm	6570/1400
排量	L	50
发动机型式		V-16四冲程
缸径 × 冲程	mm × mm	159 × 159

### ① 模块化共轨燃油系统（MCRS）

高压燃油喷射系统，燃油雾化良好，燃烧更充分，动力输出更高效，燃油经济性更佳，噪音更低。

High pressure fuel injection system, good fuel atomization, fuller combustion, more efficient power output, better fuel economy, and lower noise.

### ② 强大的数据支持

为客户提供持续更新的数字解决方案。用于远程发动机监控、预测以及警报通知，从而提高生产力、降低成本并优化维护和服务。

Provide customers with continuously updated digital solutions that are used for remote engine monitoring, prediction, and alarm notification to improve productivity, further reduce costs and optimize maintenance and services.

### ③ 降低维护成本

采用 LTA 低温后冷却系统，保证了进气温度和发动机缸体寿命。采用一台最大单体发动机驱动多泵单元，维护成本降低 30%。

LTA low-temperature aftercooling system is adopted to ensure intake air temperature and engine cylinder life. The use of a maximum single engine to drive a multi pump unit reduces maintenance costs by 30%.

### ④ 适应能力极强

采用涡轮增压技术，响应速度快，燃油经济性好高原适应能力强；满足海拔 3500 米以上、-40-50℃的矿山施工要求。

Turbocharging technology features quick response, high fuel economy and strong adaptability to high altitude. It can meet the requirements for mining construction at an altitude of over 3500 meters and between -40 and 50 ℃.

### ⑤ 更可靠耐用

采用多级燃油过滤燃油系统，过滤效率高达 99%，可有效过滤燃油中的杂质和水分，延长发动机寿命；多级燃油滤清器并联布置可以降低燃油进油阻力，满足发动机进油要求；配置有透明储水杯和水位报警器，可定时提醒用户进行放水操作。

Using a multi-stage fuel filtration system with a filtration efficiency of up to 99% effectively filters impurities and moisture in the fuel, extending the engine life. Multi stage fuel filter parallel arrangement can reduce the fuel inlet resistance and meet the engine fuel inlet requirements; A transparent water storage cup and water level alarm are fitted to regularly remind users to discharge water.

### ⑥ 满足严苛的排放法规

空气滤清器配套唐纳森公司 SSG 系列矿用重灰度滤清器，可有效防止粉尘进入，以适应多灰尘环境作业。

The air filter is equipped with Donaldson's SSG series mining heavy gray filters, which can effectively prevent dust from entering and adapt to dusty environments.

动力配套名称	配套商	特点
燃油系统	美国康明斯	均为世界顶级专业厂家，为发动机燃油系统提供最为可靠的保障
空滤系统	美国唐纳森	全球空滤专家 极大延长发动机寿命，配置的排气引射系统，可有效延长空滤保养周期，维保成本低
联轴器	德国CENTA	柴油机联轴器首选，最为可靠的动力输出连接总成

#### 可提供电动版动力选项：

根据矿区电网环境，可配置 60Hz 及 50Hz 两种工频电动机。电动版更加节能环保，使用成本进一步大幅降低。

02

液压系统


精确控制 高效协同

Accurate control  
and efficient collaboration

Hydraulic  
System

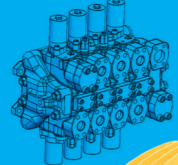
1

油缸采用增强型关节轴承及液压缓冲设计，寿命大幅提升，有效避免漏油、拉缸等故障发生。



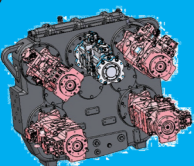
2

主阀为 KYS-1000 片式主阀，通径大 (Φ50)，压损低；系统压力低至 29.4MPa，使用寿命长。




3

主泵采用川崎新型 K7V280 主泵，输出扭矩提升 30%，总效率提升 10%。



4

中心回转接头型号升级，通径大 (Φ50)，内部压损低；采用液压油自润滑，免维护。




5


采用进口散热器，风扇转速根据温度智能调节，完全独立散热。



6

涨紧油缸，定制化开发带行走过载保护涨紧油缸，受到行走冲击时可自动中断行走，保护下车元件。

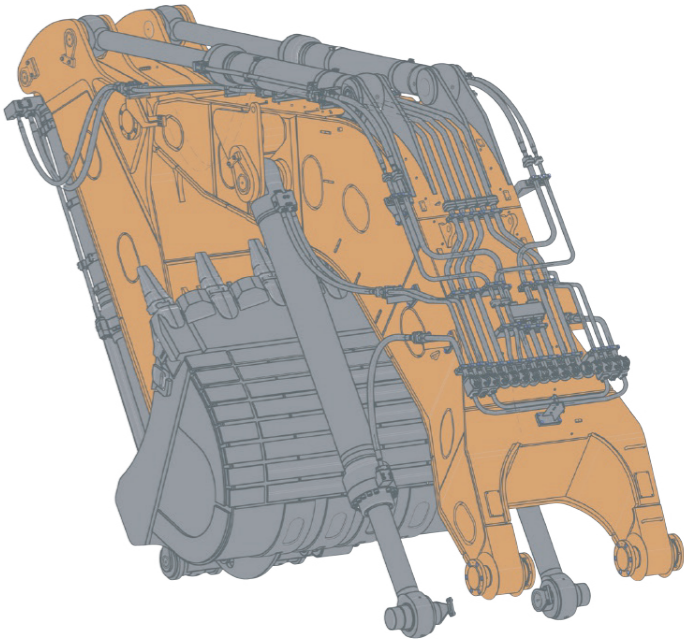




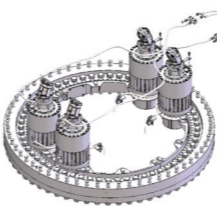
① 管路布局优化

XE5600 液压管路设计满足澳标等高端市场要求，管路增加防护和管夹固定，结实牢固。液压主泵数量少，管路简单，液压系统更稳定，液压元器件及管路使用寿命长，维保成本低。系统压力更低，液压系统更稳定，液压元器件及管路使用寿命更长，维保成本低。

The XE5600 hydraulic pipeline design meets the requirements of high-end markets such as Australian standards, with added protection and clamp fixation for the pipeline, making it sturdy and firm. The number of hydraulic main pumps is small, the pipelines are simple, the hydraulic system is more stable, the service life of hydraulic components and pipelines is long, and the maintenance cost is low. Lower system pressure, more stable hydraulic system, longer service life of hydraulic components and pipelines, and lower maintenance costs.



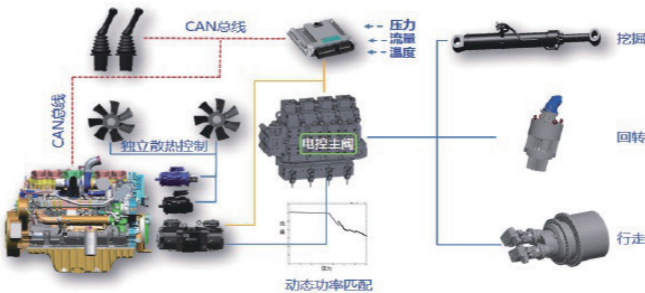
最大泵流量 ltr/min.(泵数量)	
主泵	4,750(12)
回转泵	无
压力设定 MPa(kg/cm²)	
工作回路	29.4(300)
行走回路	29.4(300)
回转回路	27.4(280)



② 均衡式回转装置设计

两套回转装置彼此径直对等安装，受力均衡，极端工况下性能更加突出，确保实现最佳的挖掘性能和生产率。采用国际知名品牌大规格三排滚柱式回转支承，轴向和径向承载能力更强，使用寿命长。

The two sets of rotary devices are installed directly and equally with each other, with balanced force and more outstanding performance under extreme working conditions, ensuring excellent excavation performance and productivity. Adopting internationally renowned brand large-sized three row roller type slewing bearings, with stronger axial and radial bearing capacity and long service life,



③ 优异的电控正流量系统，配合徐工独立研发的控制系统，实现发动机和液压系统完美匹配，复合动作平稳流畅，作业高效，油耗低。

The excellent electronic control positive flow system, combined with the control system independently developed by XCMG, achieves a perfect match between the engine and hydraulic system, contributing to smooth composite action, efficient operation and low fuel consumption.

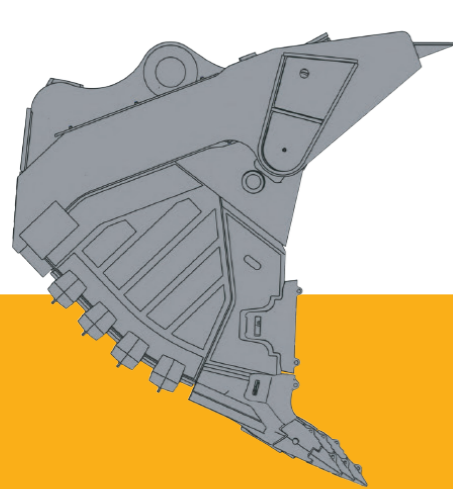
## 03

## 承载重托 满足高生产率 与高经济性

Meet High Productivity And High Economy

### Bearing Weight

只有每个工作装置的高效协同，  
才能实现全面的高效率，  
徐工始终把每一处细节做到极致。

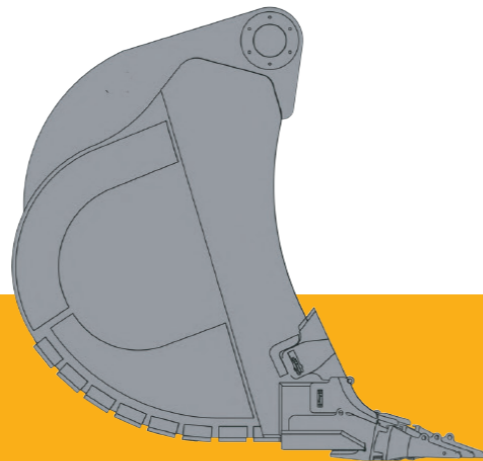


#### 正铲 (装载铲)

装载铲配备有自动调平机构，以恒定角度控制铲斗。旨在增加装载能力与倾斜的角度，提高操作效率。

#### FRONT SHOVE

挖斗容量	27-29 m <sup>3</sup>
最大挖掘力	1600/1550 kN
回转速度	3.3 r/min
行驶速度	2.3/1.6 km/h



#### 反铲

反铲设计采用有限元优化分析，铲斗体受力均匀，使用寿命长。配有浮动销和衬套，带有自动润滑系统，使用寿命长，生产率高。

#### BACKHOE BUCKET

挖斗容量	27-36 m <sup>3</sup>
最大挖掘力	1325/1550 kN
回转速度	3.3 r/min
行驶速度	2.3/1.6 km/h

**斗齿：**采用世界知名公司的合金耐磨斗齿，斗齿系统架构设计精巧，穿透能力强且更换维护方便。关键部位由高强耐磨板焊合而成，铲斗强度高、耐磨性好、装卸效率高。



### 动臂、斗杆

主体采用大截面轻量化抗扭箱型设计和端部采用铸造设计，所有转轴均配有高承载耐磨材料的衬套，并带有润滑油槽。  
进行有限元分析，对存在应力集中部位进行局部结构优化，降低其应力值，疲劳寿命得以大幅提高，主体结构理论寿命在 45000h 以上

The main structure adopts large-section lightweight torsion box design and the end adopts casting design. All rotating shafts are equipped with bushings of high-bearing wear-resistant materials and lubricating oil grooves. Finite element analysis is used to optimize the local structure of the part with stress concentration, reducing its stress value and improving the fatigue life. The theoretical life of the main structure is over 45,000 hours.

## 全球领先的制造工艺 关键结构件使用寿命长

动臂、斗杆、转台、下车等关键结构件均采用焊后整体去应力退火工艺，应力水平降低 70—85% (国内唯一，全球领先) 关键结构件疲劳寿命得以大幅提升；  
配置全球领先的全数字化大熔深焊机，熔深达 3—5mm；焊接质量高  
具有行业领先的大型加工设备，实现大型结构件一次装夹、整体加工，保证加工精度与效率。

Key structural parts such as boom, bucket rod, turntable and lower structure all experience overall post-welding stress relief annealing process, and the stress level is reduced by 70-85% (The technology is exclusive to XCMG and ranks first in the global industry). Equipped with the world's leading digital deep penetration welding machine, the depth of penetration up to 3-5mm; High welding quality With industry-leading large-scale processing equipment, to achieve large structural parts once clamping, overall processing, to ensure processing accuracy and efficiency.



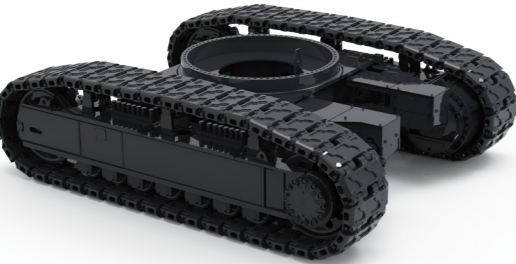
04

重载底盘  
保持较高的承载性  
与经济性

Maintain High Carrying Capacity And Economy

Heavy  
Duty Chassis

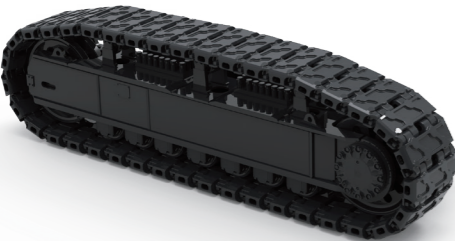
整机质量 kg	569700
标准斗容 m³	35
接地比压 kPa / 履带板宽度 mm	251/1400
履带长度	9380
底盘宽度	7400
系统压力 Mpa	29.4



① 强健的组合式底盘

联接部位均采用高强钢,可承受更高强度的载荷冲击,配置更宽的履带板,接地比压小,下车履带总宽度大,侧向稳定性更好。最优匹配的轮系布局有效确保运行可靠性,实现挖掘时整机的稳定性及驾驶员舒适感。

The connecting parts are all made of high-strength steel, which can withstand higher external loads and impacts. Wider track shoes is fitted with a smaller ground pressure ratio, a larger overall width of the lower structure and better lateral stability. The optimally matched gear train layout ensures operational reliability, entire machine stability and driver's comfortableness during excavating operation.



② 极佳强度和耐用性的四轮一带

具有连续滚道、自动导向结构的整体式履带板,能够实现向支重轮提供连续支撑并防止横向跑偏,滚道面接触应力低,不再需要夹轨器,可靠性高,使用成本低;优化的内部轮体油腔的流线布局,实现轮系的内部良好润滑。无需注油维护,可靠性高、使用寿命长。

The integrated track shoe with continuous raceway and automatic guidance structure can provide continuous support to the supporting wheels and prevent lateral deviation. The contact stress on the raceway surface is low, and rail clamping devices are no longer needed. It has high reliability and low usage cost; The optimized streamline layout of the internal wheel body oil chamber achieves good internal lubrication of the gear train. There is no need for oil injection maintenance due to its high reliability and long service life.

③ 刚性箱设计

计算机辅助分析已被用于确定最有效的框架寿命设计,以确保 XE5600 能够承受任何采矿作业的要求。

Computer aided analysis has been used to determine the most effective frame life design to ensure that the XE5600 can withstand the requirements of any mining operation.



④ 回转支承座

徐工独有的回转支承座通过使用特殊设计的锻钢部件,提供最佳的应力分散,以减少临界高应力区域内的故障机会。这保证了一个更坚固的框架和更高的耐久性。

XCMG's unique slewing bearing seat provides optimal stress dispersion by using specially designed forged steel components to reduce the chance of failure in critical high stress areas. This ensures a more robust framework and higher durability.



⑤ 托链轮

左右纵梁设计有三个双侧底座支承的托链轮。这些滚轮可很好地托起履带板,减少履带板和堆积物料之间磨损,从而实现更可靠的底盘系统。

The left and right longitudinal beams are designed with three support rollers on both sides of the base. These rollers can effectively lift the track shoes, reducing wear between the track shoes and accumulated materials, thus empowering a more reliable chassis system.



⑥ 注油辊和惰轮

充满油的引导轮和上下滚轮消除了日常润滑的需要,有助于降低维护成本。

There is no need to lubricate daily the idler filled with oil and upper and lower rollers, reducing maintenance costs.



⑦ 全防护底封板 (选配)

新设计的全防护重型底封板,强度高,实现下车 H 架内蓄能器和液压管路全防护。下车液压可靠性大幅提升。

The newly designed fully protective heavy-duty bottom sealing plate features high strength and full protection of both the energy accumulator and hydraulic pipeline inside the H frame of the vehicle. The reliability of the lower structure hydraulic system has significantly improved.

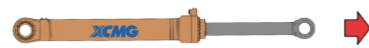
## 05

伸缩自如  
灵活应对各类施工Flexible Response To  
Various Types Of Construction

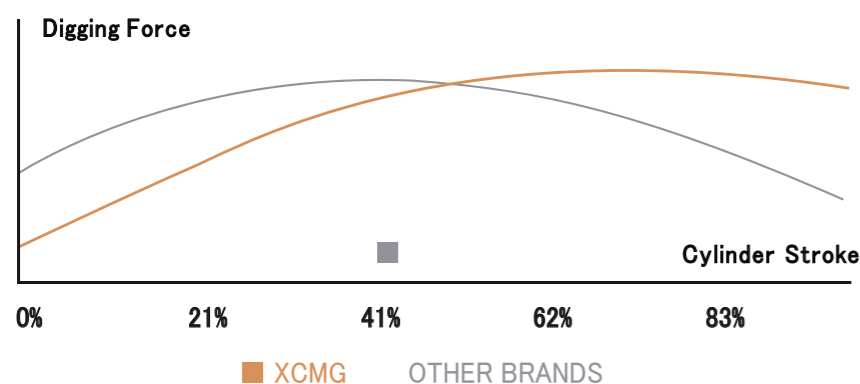
## Flexibility



油缸完全缩回时流量减少



油缸完全伸出时流量减少



随着斗杆油缸行程增大，XE5600 在最需要力量的地方可提供更大的挖掘力。

## ① 电子缓冲技术

利用角度传感器检测工作油缸位置，通过控制器进行逻辑判断，在油缸行程末端主动减少主泵流量，大幅减少工作油缸行程末端的冲击，提升驾驶员操作舒适度，延长结构件使用寿命。

Using angle sensor to detect the position of the working oil cylinder and the controller to make logical judgments. The flow of the main pump is actively reduced at the end of the stroke of the oil cylinder, reducing the impact at the end of the stroke of the working oil cylinder, improving the driver's operating comfort, and extending the service life of the structural components.



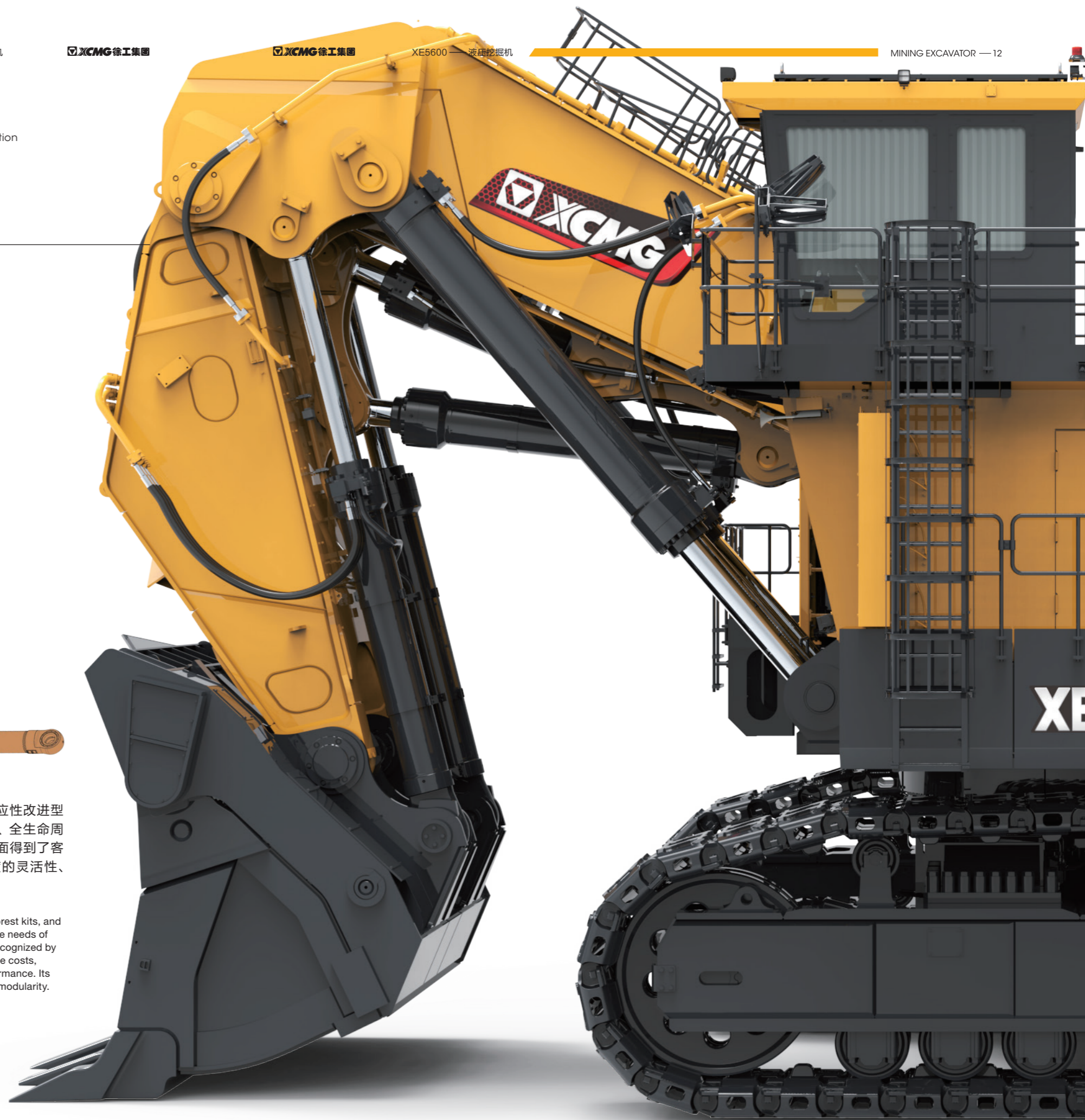
可提供低温、热带雨林套件、高原适应性改进型机型，满足不同工况需求。在可靠性、全生命周期使用成本、操作体验和施工性能方面得到了客户的充分认可。其产品设计具备高度的灵活性、集成性和模块化等特点。

We can provide low-temperature, tropical rainforest kits, and plateau adaptation improved models to meet the needs of different working conditions. It has been fully recognized by customers in terms of reliability, full life cycle use costs, operational experience, and construction performance. Its design features high flexibility, integration, and modularity.

## ② 水平推压功能

斗杆油缸采用高低缸设计，驾驶员仅靠推斗杆油缸的单动作实现铲斗水平推压装车的效果，大幅减少了操作复杂程度和劳动强度。

The bucket cylinder adopts a high and low cylinder design, and the driver can horizontally push and load the bucket only by pushing the bucket cylinder with a single action, greatly reducing the complexity of operation and labor intensity.



## 06

操控效果  
安全、舒适  
科技、智能

Safety, Comfort, Technology, Intelligence

Control  
Effect

将安全舒适的驾乘环境和得心应手的操控性完美融合，徐工为每一位驾驶员提供最佳的操控体验。



冷暖空调

配备密封增压驾驶室，标配冷暖空调系统，风量均匀流畅，确保驾驶员达到舒适体感，有助于操作手全天轻松工作。

The sealed turbocharged cabinet and a standard cooling and heating air conditioning system is fitted with smooth air volume, ensuring a comfortable environment for the operator to work easily all day.



悬浮式座椅

专为采矿行业设计的空气悬浮式减振座椅，具备通风加热、自由旋转、仰角调节、软硬阻尼调节、腰托调节等功能，全方位贴合腰部。集减振、防振、抗振等优势于一身，大大减轻驾驶员的操作疲劳，降低危险系数。同时配备了主副双座椅，满足培训及 24 小时工作倒班需求。

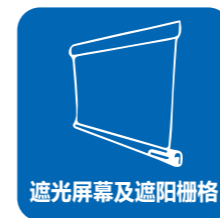
The air suspension damping seat is specially designed for the mining industry with functions including ventilation, heating, free rotation, elevation adjustment, soft and hard damping adjustment, lumbar support adjustment, which fits the waist in all directions. Combined advantages such as vibration reduction, anti vibration, and anti vibration greatly reduces driver fatigue and risk factor. It also is fitted with both operator seat and trainer seat to meet the needs of training and 24-hour work shifts.



电子操纵杆

整机采用电控正流量系统，电控操控手柄，精度高，响应快。操纵手柄控制装置操作省力，设计精良，使驾驶员能够保持自然的腕部和臂部姿势，提高舒适度。

The entire machine adopts an electronic control positive flow system, with an electronic control operational and control handle, which features high accuracy and fast response. The joystick control device is labor-saving and well-designed, allowing the driver to maintain a natural wrist and arm posture, improving comfort.



遮光屏幕及遮阳栅格

遮光屏幕收放自如，可自由调节光线。可伸缩的前和侧卷屏保护驾驶员免受紫外线眩光，两侧配备遮阳栅格，既能减少驾驶室的热量积累，又不影响司机视野，以达到优越的操作环境。

The blackout screen can be freely retracted and adjusted for light. The retractable front and side roll up screens protect the driver from UV glare. Both sides are equipped with shading grids to reduce heat accumulation in cabinet without affecting the driver's field of view, achieving a superior operating environment.



安全座舱

宽敞的超大型、全视野正压驾驶室提供了理想安全的工作条件。全新设计的防落物 FOPS 驾驶室，防止落物砸伤操作员，后车窗设置了安全出口。前窗为全景双层夹胶钢化玻璃，视野好，安全性高，侧面采用 F 绿着色钢化玻璃，有效阻止紫外线。前倾式高架驾驶室提供了开阔的下方视野，配备的空气双重系统，使得室内压力维持可在 50-200Pa，有效阻止粉尘进入。超强的密封性能，使得室内噪音处于 75db 以下。多点支撑的减震器能有效的隔离外界的震动。

The spacious and ultra large, full view positive pressure cab provides ideal and safe working conditions. The newly designed anti falling object FOPS cab prevents operator from injury caused by falling objects. The rear window is fitted with a safety exit. The front window is made of panoramic double-layer laminated tempered glass, it ensures good visibility and high safety. The side window glass is made of F green colored tempered glass, effectively preventing ultraviolet rays. The front tilting elevated cab provides a wide view from below and is equipped with an air boost system to maintain indoor pressure between 50-200Pa, which effectively prevents dust entry. High sealing performance makes indoor noise level below 75db. Multi point supported shock absorbers can effectively isolate external vibrations.

# 07 安全至上 安全驾驭一往无前

Safe Driving Without Moving Forward

## Safety First

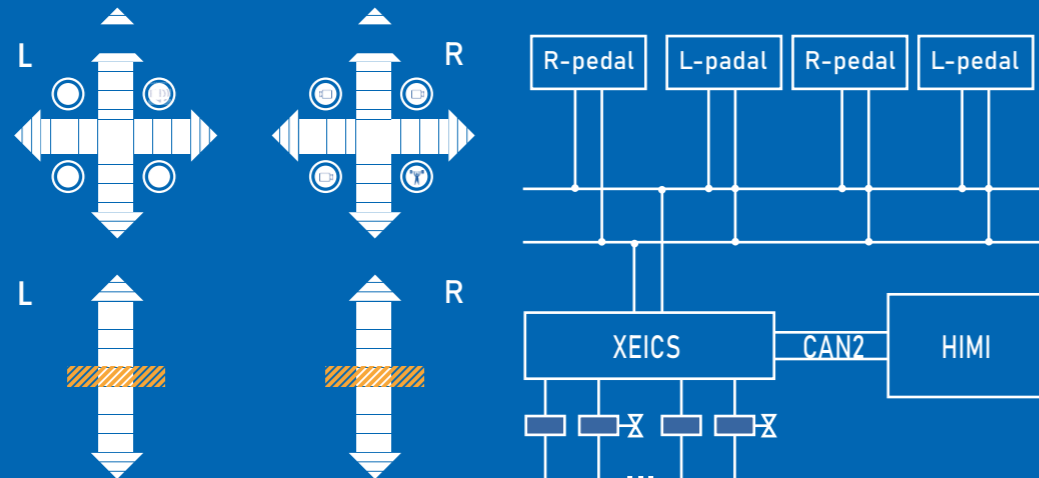
### ① 应急移位技术

当手柄脚踏等操作装置失效导致整车无动作时，通过仪表界面代替操作装置相应功能，能应急操作设备或转场维修，不影响作业面正常施工，提高整机安全等级。

When the failure of operating devices such as handles and pedals leads to no movement of the entire vehicle, the corresponding functions of the operating device can be replaced through the instrument interface, enabling emergency operation of equipment or on-site maintenance, without affecting the normal construction of the working surface, and improving the safety level of the entire vehicle.

### 人机交互 驾驶系统示意图

Man-machine  
Interactive  
Driving System



### 移位替换操控

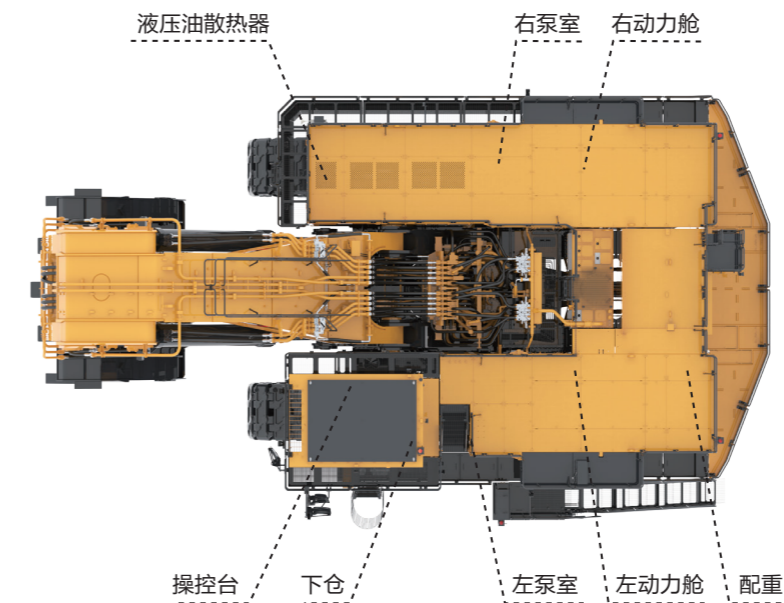
Shift Replacement  
Manipulation



### ② 应急开关保护

整车在驾驶室及维修点配置 8 个急停开关，紧急情况下可按下急停，确保操作安全。维修时可先将急停按下，发动机将不会启动，可以安全进行维护。按下急停时，控制器智能控制液压油箱排气电磁阀开启，释放液压油箱中残余压力，确保维修安全进行。

The entire vehicle is equipped with 8 emergency stop switches in the cab and maintenance points, which can be applied in emergency situations to ensure safe operation. During maintenance, the emergency stop can be pressed without the engine starting, allowing safe maintenance. Pressing the emergency stop actuates the the exhaust solenoid valve of the hydraulic oil tank under the intelligent controller to release residual pressure in the hydraulic oil tank, ensuring safe maintenance.



旋转梯及集中加注面板未在锁止位时，整车无动作，避免误操作，确保维保、操作安全进行。

仪表界面可显示旋转梯及加注面板锁止状态，方便驾驶员进行状态监控。

大屏幕显示器，多点视频监控，消除视野盲区，施工更加安全。



标配双极隔离开关和发动机启动开关，安全性高。标配电瓶快充接头，蓄电池充电方便快捷。

### 防倾翻技术（选配）

运用倾角传感器识别车辆自身位姿状态，实现倾翻预警，动作限制，提升操作安全性。

The inclination sensor is used to identify the position and attitude of the vehicle itself, achieving rollover warning and limiting movement, thus improving operational safety.



### 防疲劳驾驶技术（选配）

人脸识别，指纹识别技术，实现防疲劳驾驶技术，身份识别，行为识别，指纹启机等技术。

Technologies are being applied including facial recognition, fingerprint recognition, anti-fatigue driving, ID recognition, behavior recognition and fingerprint startup.



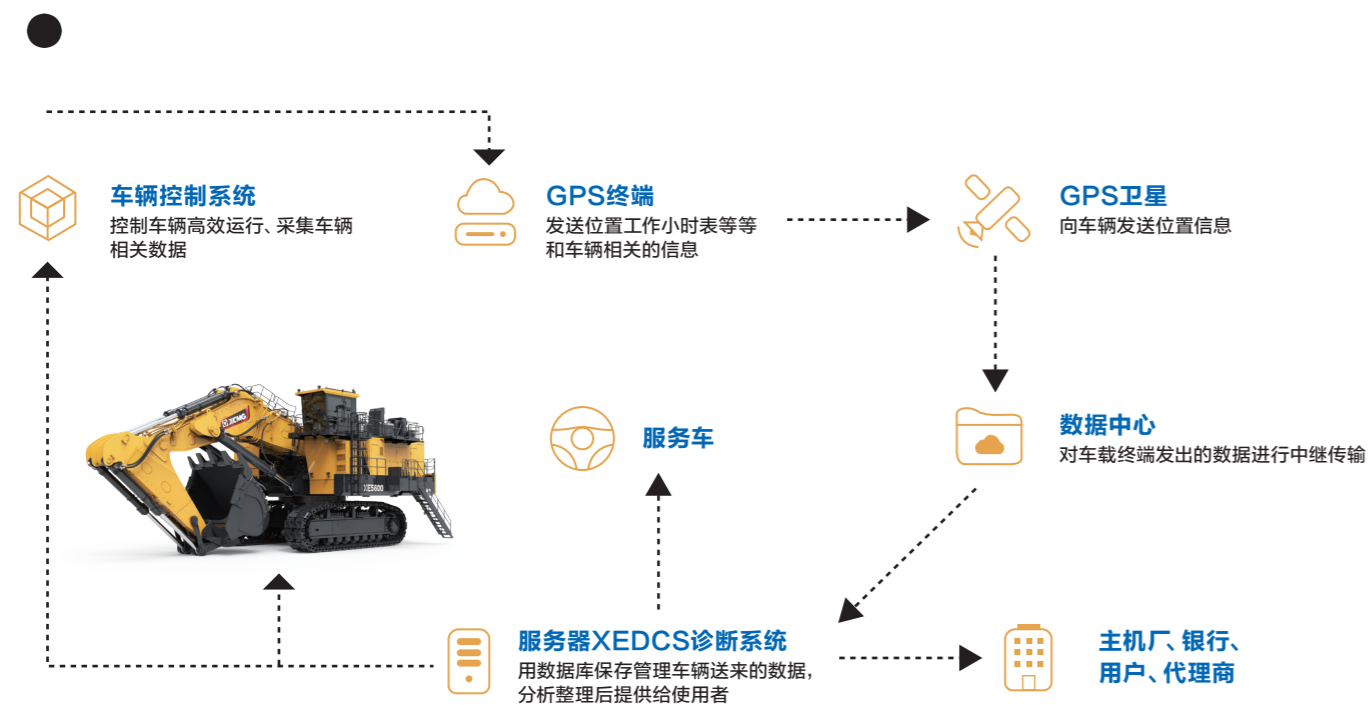
# 08 智能系统 全方位保护设备运行

Full Range Of Protection Equipment Operation

## Intelligent System

## New generation of mining intelligent control system

### 新一代挖掘智能控制系统



采用全新自主开发的智能控制系统 (XEICS)，实现了动力系统与液压系统功率的精确匹配，工作更加高效节能。

徐工 GPS 智能云控制系统，与公司 CRM、400、DMS 系统链接，集 GPS 定位功能、远程管理和远程诊断功能。能够承载挖掘机地理位置信息，挖机现场工作参数和报警信息数据上传，实现车辆出入库管理、远程管理、远程诊断、远程控制。

A newly independently developed intelligent control system (XEICS) is applied to achieve precise matching of power between the power system and hydraulic system, making work more efficient and energy-saving.

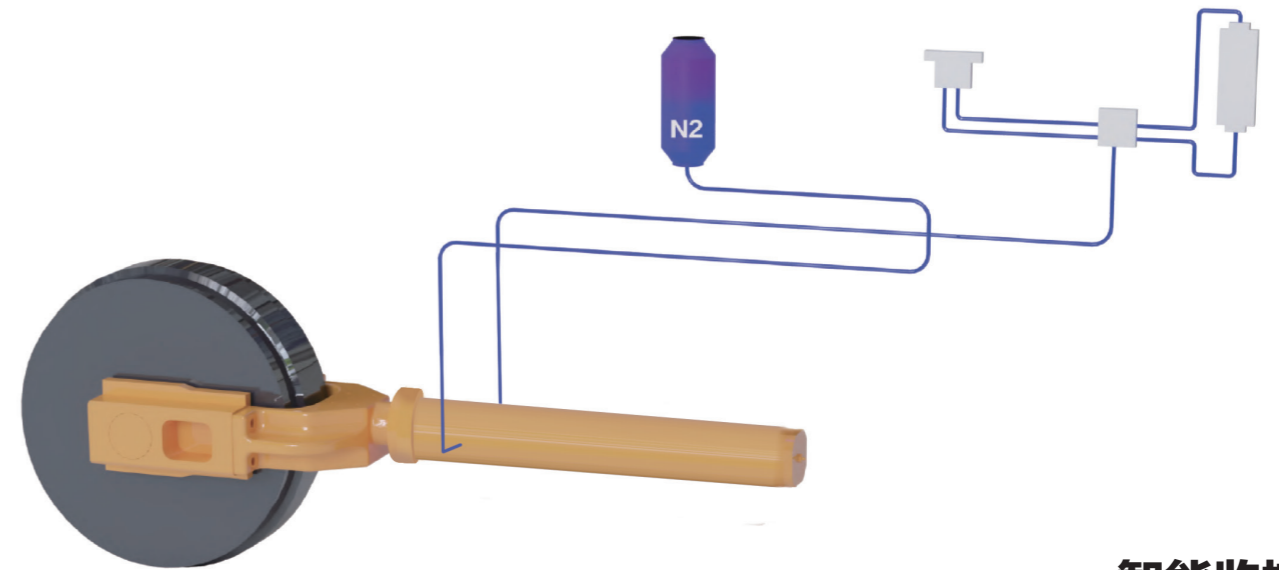
XCMG GPS intelligent cloud control system is linked to the company's CRM, 400 and DMS systems, and it integrates GPS positioning function, remote management, and remote diagnosis function. It is also capable of storing geographic location information of excavators, uploading on-site working parameters and alarm information data of excavators, achieving vehicle inbound and outbound management, remote management, remote diagnosis, and remote control.



### 车载故障诊断系统

整机配备了具有自主知识产权的 M2IS-OBd 车载故障诊断系统。该系统具有多路数据实时监测与高速存储、在线诊断与数据离线解析、设备行为分析及历史事件回放等一系列功能，是排查故障的重要数据来源。

The entire machine is equipped with a M2IS-OBd on-board fault diagnosis system with independent intellectual property rights. The system has a series of functions such as real-time multi-channel data monitoring and high-speed storage, online diagnosis and offline data analysis, device behavior analysis, and historical event playback. It is an important data source for troubleshooting.

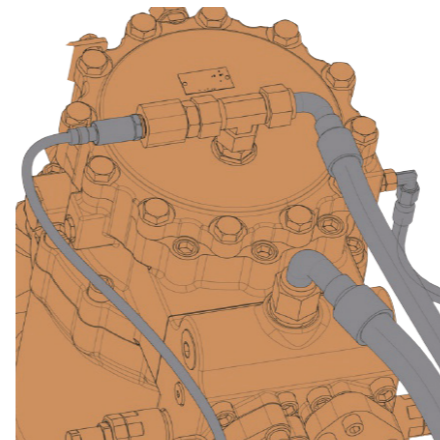


### 带压力反馈的液压涨紧缓冲技术

大容量的蓄能器可吸收下车行走冲击，内置压力反馈检测。如果涨紧超过限度，行走即自动停止以避免履带被过度拉拽，可有效延长履带寿命。

The large-capacity accumulator can absorb the lower structure impact in traveling. It has a built-in pressure feedback detection device. If the tension exceeds the limit, traveling will automatically stop to avoid excessive dragging of the track, which effectively extends the life of the track.

## 智能监控



在泵、马达泄油口处设置的油污传感器及压力传感器有助于液压元件的预防性维护，降低泵、马达等因杂质进入而损坏的风险和代价高昂的停机时间。在主泵出口设置高压过滤器，可有效防止主泵损坏产生的杂质污染整个液压系统。

The oil pollution sensor and pressure sensor installed at the oil discharge port of the pump and motor provide preventive maintenance for hydraulic components, reducing the risk of damage caused by impurities entering the pump and motor, and reducing costly downtime. Setting a high-pressure filter at the outlet of the main pump can effectively prevent the entire hydraulic system from impurities and contamination caused by main pump damage.

# 09

## 维修保养 标配内外双互通 检修通道

Standard Internal  
And External Dual Interworking  
Maintenance Channels

## Maintenance

### 内外全互通双通道

可以快捷地对散热器舱、发动机舱、泵室进行检修，保养安全便捷。

Repair tasks can be swiftly accessible to the radiator compartment, engine compartment, and pump compartment, ensuring safe and convenient maintenance.

#### ① 回转减速机机油游标尺引到走台处，机油检查非常方便。

The rotary reducer oil vernier led to the walkway makes oil inspection convenient.



#### ② 标配排气引射

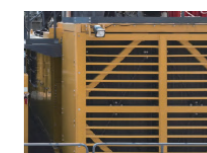
利用排气气流，将空滤处灰尘从排气管中排出，灰尘免清理，同时可有效延长空滤更换周期。

Dust cleaning is not necessarily needed when using the exhaust gas flow to discharge the dust at the air filter from the exhaust pipe, extending the air filter replacement cycle.



#### ③ 铜质散热器，散热铜管可单独拆卸更换，维修更换时间短，成本低。

Radiators featuring copper cores and copper heat pipes allows for separate dismantling and replacement and comes along with short maintenance and replacement time and low cost.



#### ④ 地面油液集中加注系统

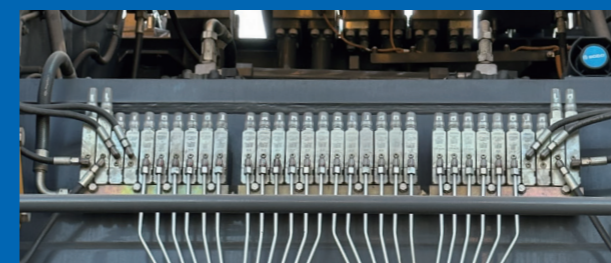
实现地面集中加注，加注接口采用快速连接设计，外接加注机快速加注，大幅提升维保效率，缩短停机时间，同时极大降低人工劳动强度。

Centralized ground filling is applied with a quick filling connection design for the filling interface. An external filling machine for rapid filling improves maintenance efficiency, shortens downtime, and reduces labor intensity.



#### 伴你回家：

通道灯可在驾驶室和车上实现双控，具有延时断电关闭功能，方便人员上下机器。



工作装置处加注器



回转支承润滑点全防护



黄油加注泵桶

## 全自动 + 半自动润滑系统

润滑系统采用国际一流品牌，全自动模式可实现对工作装置、回转支承润滑点的自动润滑，极大地降低了人的劳动强度，半自动模式可对故障润滑点进行快速应急加注，两种模式配合作业，润滑系统可靠性更高。可在仪表界面上对润滑压力及润滑间隔时间进行调整以适应不同工况润滑需求，操作方便快捷。

The lubrication system adopts an international first-class brand, and the fully automatic mode can achieve automatic lubrication of the working device and the lubrication points of the slewing bearing, greatly reducing human labor intensity. The semi-automatic mode can quickly emergency fill the faulty lubrication points, and the two modes work together, resulting in higher reliability of the lubrication system. The lubrication pressure and lubrication interval time can be adjusted on the instrument interface to meet the lubrication needs of different working conditions, making operation convenient and fast.



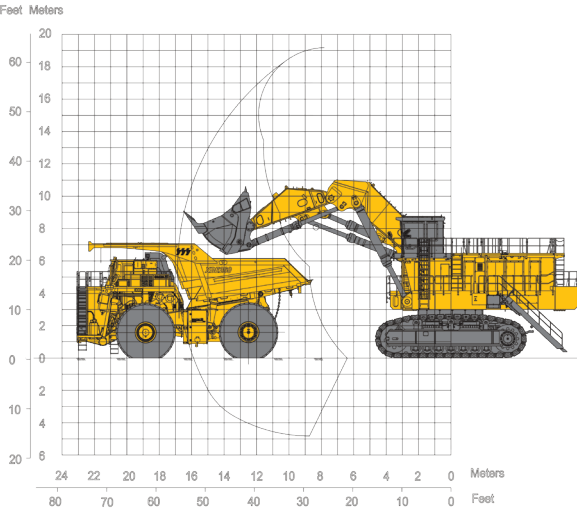
# XE5600正铲 与XDE260/XDE320 匹配作业

优势：

矿车与挖掘机在同一作业平台，正铲一次采掘高度范围大，XE5600可达到 16–20 米，减少道路修建的成本，作业时不需要搭建平台，省时省力，可以直接采装。

Advantages:

The mining car and the excavator are on the same operating platform, and the mining height range of the shovel is large, and the XE5600 can reach 16-20 meters, reducing the cost of road construction, and the operation does not need to build a platform, saving time and labor, and can be directly mined.



	XDE200	XDE260	XDE320
额定载重(t)	180	230	300
发动机额定功率(kW)	1510	1864	2013
货厢容积(m³)	110	148	211
配合XE5600装满斗数	3-4	4-5	6-7

类型(铲斗 )	重型岩石	重型岩石
堆装容量1:1	27m³	29m³
最大物料密度（松散）	1.9t/m³	1.8t/m³

优势：

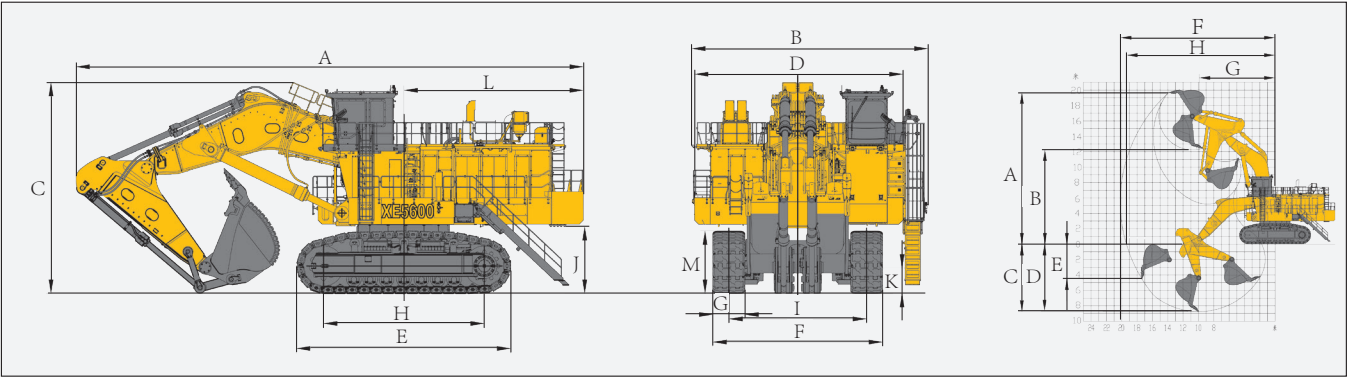
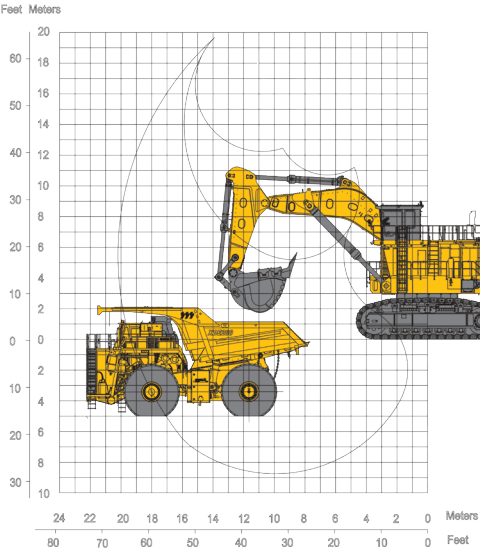
反铲挖掘机在高平台，矿车在低平台，作业效率高，灵活性好，爬坡能力强，地面以上和地面以下物料都可以挖掘，操作精准，对物料筛选能力强，对爆破作业后的物料也可以采掘，且不需要推土机进行辅助平整作业面。

Advantages:

Backhoe excavator on high platform, mining car on low platform, high working efficiency, good flexibility, strong climbing ability, above and below the ground can be excavated materials, accurate operation, strong material screening ability, the blasting operation of the material can also be mined, and do not need bulldozers to assist the leveling of the working surface.

	XDE200	XDE260	XDE320
额定载重(t)	180	230	300
发动机额定功率(kW)	1510	1864	2013
货厢容积(m³)	110	148	211
配合XE5600装满斗数	3-4	4-5	6-7

类型(铲斗 )	重型岩石	重型岩石	标准岩石
堆装容量1:1	27m³	29m³	35m³
最大物料密度（松散）	2.4t/m³	2.0t/m³	1.8t/m³



## 主要参数 Main specifications

型号Model	单位UOM	参数Parameters
操作重量 Operation Weight	kg	569700
铲斗容量 Bucket Capacity	m³	27-35

发动机 Engine		
发动机型号 Model	/	QSK50
直喷 Direct injection	/	√
4冲程 Four strokes	/	√
水冷 Water cooling	/	√
涡轮增压 Turbo-charging	/	√
低温中冷 LTA	/	√
缸数 Number of cylinders	/	16
额定输出功率/转速 Output power	kW/rpm	2×1119/1800
最大扭矩/转速 Torque/Speed	N.m	2×6570/1400
排量 Displacement	L	50

主要性能 Main Performance		
行驶速度（高/低） Travel speed ( H/L)	km/h	2.3/1.6
回转速度 Rotating speed	r/min	3.3
爬坡能力 Gradeability	°	30
接地比压 Ground pressure	kPa	251
铲斗挖掘力 Bucket digging force	kN	1500
斗杆挖掘力 Arm crowd force	kN	1325

液压系统 Hydraulic System		
主泵 Main pump	/	12个柱塞泵
主泵额定流量 Rated flow of main pump	L/min	8×378+4×432
主安全阀压力 Pressure of prime valve	MPa	29.4
行走系统压力 Pressure of travel system	MPa	29.4
回转系统压力 Pressure of swing system	MPa	27.4
先到系统压力 Pressure of pilot system	MPa	4.4

油类容量 Oil Capacity		
燃油箱容量 Fuel tank capacity	L	11300
液压油箱容量 Hydraulic tank capacity	L	2160
发动机油容量 Engine oil capacity	L	2×290.5

外形尺寸 Overall Dimension			
A 总长 Total length	mm	22110	
B 总宽 Total width	mm	10300	
C 总高 Total height	mm	9155	
D 转台宽度 Upper turntable width	mm	9088	
E 履带长度 Track length	mm	9380	
F 底盘总宽 Total width of chassis	mm	7400	
G 标准履带板宽度 Track width	mm	1400	
H 履带轴距 Track wheelbase	mm	7000	
I 轨距 Track gauge	mm	6000	
J 配重离地间隙 Ground clearance of counterweight	mm	2900	
K 最低离地间隙 Minimum ground clearance	mm	1100	
L 尾部回转半径 Minimum turning radius at the tail	mm	7970	
M 履带高度 Track height	mm	2750	

作业范围 Working Range			
A 最大挖掘高度 Maximum digging height	mm	19720	
B 最大卸载高度 Maximum unloading height	mm	12300	
C 最大挖掘深度 Maximum digging depth	mm	8810	
D 8英尺水平挖掘深度 8 feet excavation depth from the horizontal plane	mm	8720	
E 最大挖掘深度 Maximum vertical digging depth	mm	4300	
F 最大挖掘半径 Maximum digging radius	mm	20230	
G 最小回转半径 Minimum turning radius	mm	7870	
H 地面最大挖掘半径 Maximum digging radius on the ground	mm	19450	

标配 Standard			
动臂长度 Boom length	mm	10100	
斗杆长度 Arm length	mm	5000	
铲斗斗容 Bucket capacity	m³	35	

选配 Optional			
发动机低温启动 Cold engine start			
自动灭火系统 Automatic fire extinguishing system			



# XE5600

## 液压挖掘机

### 技术参数

配置明细	标配	选配（更换）	选配（增加）
动力系统			
发动机品牌	康明斯		
发动机型号	QSK50		
排放等级	国Ⅲ		
52° C高温环境冷却组件	√		
-20° C冷启动能力			○
-35° C超低温启动能力			○
带水位指示传感器的油水分离器	√		
燃油油标	√		
燃油呼吸阀	√		
油水快放装置	√		
燃油快速加注系统	√		
径向密封空气滤清器	√		
空气压差指示器	√		
散热器防尘网	√		
机油快速加注系统	√		
油品采样系统	√		
自动急速	√		
最高可使用B20级生物柴油	√		
液压系统			
动臂/斗杆流量再生	√		
辅助液压阀	√		
自动回转停车制动器	√		
直行液压回路	√		
动臂优先阀	√		
备用阀片	√		
液压油 Autran 4 10	√		
液压油 Spirax S4 CX 10W/Mobiltrans HD 10W	√		
液压油快速加注系统	√		
仪表压力监控	√		
电气系统			
蓄电池（10 × 900 CCA）	√		
蓄电池断路开关-双极	√		
启动隔离开关	√		
140 A 直流发电机	√		
9kW 起动机	√		
行走报警器	√		
24V直流电源接口	√		
12V直流电源接口	√		
摄像头	√		
5V USB接口	√		
照明灯			
安装在下仓上的工作灯	√		
安装在右动力舱的工作灯	√		
驾驶室内部照明	√		
驾驶室顶安装的前工作灯	√		
动力舱上安装的后工作灯	√		
通道灯	√		
泵室检修灯	√		
驾驶室与内饰			
双层夹胶挡风玻璃和其他钢化窗户	√		
遮阳帘	√		
雨刮器	√		
杯架/文件袋	√		
储物箱	√		
衣帽钩	√		
可清洗地板垫	√		
完全可调的空气悬浮座椅	√		
可调节座位扶手	√		
安全带（51 mm [2"] 宽）	√		
空调系统	√		



# XE5600

## 液压挖掘机

### 技术参数

配置明细	标配	选配（更换）	选配（增加）
驾驶室与内饰			
带除霜器的双向出风空调（自动型）（加压功能）	√		
操纵手柄	√		
装有可拆卸手动操纵杆的行驶控制踏板	√		
可显示警告信息、滤清器/液体更换信息和工作小时数的彩色液晶显示屏	√		
驾驶员登入管理系统（人脸识别、密码输入）	√		
高低速换挡	√		
无线电收音机	√		
四个立体声扬声器	√		
安全与防护配置			
落物防护结构（FOPS）	√		
后视监控摄像头	√		
驾驶门锁和各舱室锁	√		
发动机和油泵室之间的隔离板	√		
紧急停机开关	√		
后窗紧急出口	√		
动臂、斗杆保持阀	√		
警报喇叭	√		
过热报警	√		
旋转报警灯	√		
安全扶手和踏板	√		
防滑板/防滑贴	√		
液压安全锁定杆	√		
登车梯	√		
紧急逃生锤	√		
左右后视镜	√		
360° 全景影像		○	
自动灭火系统			○
底盘系统与护罩			
加长底盘	√		
底盘保护装置套件	√		
1400 mm（55"）整体式履带板	√		
工作装置			
反铲动臂 10.1m	√		
反铲斗杆 5.0m	√		
35m³岩石斗	√		
29m³岩石斗		○	
27m³岩石斗		○	
正铲动臂7.7m			
正铲斗杆5.3m			
29m³岩石斗	√		
27m³岩石斗		○	
润滑系统			
电动润滑系统(进口林肯)	√		
手动动臂、斗杆集中润滑	√		
控制技术			
XEICS智能控制系统	√		
INSITE检测设备			○
蓝牙系统	√		
诊断记录仪	√		
数据链路插座	√		
配重			
48.2t配重	√		