



徐工徐工 助您成功
XCMG FOR YOUR SUCCESS

XE800D 矿用挖掘机

XE800D MINING HYDRAULIC EXCAVATOR



- 铲斗容量 Bucket Capacity (m³) : 3.8-5.6
- 操作重量 Operation Weight (kg) : 78000
- 额定功率 Output power (kW/rpm) : 403/2100

定制化 Customization

标准配置 Standard configuration XE800D

发动机 Engine	驾驶室与内饰 Cab and interior trimming	安全与保安配置 Safety and security configuration
发动机型号 Model of engine: 2506D-E15TA 排放等级 Emission level: 国 III 带水位指示传感器的油水分离器 Oil-water separator with water level indication sensor 径向密封空气滤清器 Radial seal air filter 50° C高温环境冷却组件 Cooling components of 50° C high temperature environment 散热器防尘网 Dust screen of radiator 燃油油标 Fuel leveler 油水快放装置 Oil and water quick discharge device 带反吹功能的独立散热模块 Independent cooling module with reverse blow function 燃油呼吸阀 Fuel breather valve 空气压差指示器 Air differential pressure indicator 自动怠速 Automatic idle speed	增压驾驶室 Pressurized cab 完全可调的空气悬浮座椅 Completely adjustable air suspension seat 可调节座位扶手 Adjustable armrest 安全带 (51 mm [2"] 宽) Safety belt (51 mm [2"] width) 配备辅助装置的可开启前挡风玻璃 Openable front windscreen glass equipped with auxiliary equipment 按 70/30 比例分割的前挡风玻璃 Front windscreen window cut with ratio of 70/30 双层夹胶挡风玻璃和其他钢化窗户 Double-layer laminated windshield and other tempered Windows 可滑动的车门上窗 Slidable upper window of door 带除霜器的双向出风空调 (自动型) (加压功能) Double-way air-out air conditioner with defroster(automatic)(pressurized) 可显示警告信息、滤清器/液体更换信息和工作小时数的彩色液晶显示屏 Color LCD display with data of alarm, filter/fluid change and working hours 操纵手柄 Control handle 装有可拆卸手动操纵杆的行驶控制踏板 Travel control pedal with removable manual control lever 两个立体声扬声器 Two stereo speakers 饮料杯架 Beverage holder 衣帽钩 Coat and hat hook 可清洗地板垫 Washable floor mat 空调系统 Air conditioner system 高低速换挡 High/low speed shift gears 遮阳帘 Shade curtain 顶部天窗 Top skylight 间歇式多档雨刮器 Batch multiple-range wiper 杯架/文件袋 Cup holder/file packet 冷暖储物箱 Heating and cooling storage box 无线电收音机 Wireless radio	驾驶门锁和各舱室锁 Door lock of cab and chambers 警报喇叭 Alarm horn 发动机和油泵室之间的隔离板 Spacer plate between engine and oil pump chamber 发动机紧急停机开关 Emergency stop switch of engine 后窗紧急出口 Emergency exit of rear window 蓄电池断路器 Shutdown switch of battery 动臂、斗杆保持阀 Holding valve of boom and arm 过热报警 Overheat alarm 安全扶手和踏板 Safety rail and pedal 旋转报警灯 Rotating alarm light 防滑板/防滑贴 Anti-skid plate/anti-slip tip 液压安全锁定杆 Hydraulic safety lock lever 紧急逃生锤 Emergency escape hammer 左右后视镜 Left and right rearview mirror 后视监控摄像头 Rearview monitor camera 落物防护结构 (FOPS) Fall Off Protection Structure(FOPS)
液压系统 Hydraulic system		电气系统 Electrical system
动臂/斗杆流量再生 Boom/arm flow regeneration 反向回转阻尼阀 Reverse rotary damping valve 自动回转停车制动器 Automatic rotary parking brake 直行液压回路 Travel straight hydraulic circuits 动臂优先阀 Boom priority valve 回转逻辑阀 Rotary logic valve 液压油 ISO VG 46 Hydraulic oil ISO VG 46 回转防摆阀 Rotary anti-sway valve 备用阀片 Spare valve disc 仪表压力监控 Instrument pressure monitor		蓄电池 (4 × 950 CCA) Battery (4 × 950 CCA) 95 A 直流发电机 95 A Alternator 9 kW 启动马达 9 kW start motor 行走报警器 Travel alarm 24V点烟器 24V Cigar lighter 摄像头 Camera 5V USB接口 5V USB interface
底盘系统与护罩 Chassis system and protective guard	照明灯 Lamp	配重 Counterweight
底架牵引环 Underframe bail 保护装置套件: 底盘底部封板、行走马达封板 Protection suite: close plate at the bottom of chassis, close plate of travel motor 650 mm (24") 双筋履带板 650 mm (24") Double rib track plate 加长底盘 Extended chassis 全长度履带护轨器 (两件式, 需更换下车架) Overall length crawler guardrail device(two pieces, need to replace underframe)	左右两侧动臂工作灯 Boom working lamp at left and right side 安装在储物箱上的右侧工作灯 Working lamp installed on the right side of storage box 驾驶室内部照明 Lamp inside the cab 驾驶室顶安装的前工作灯 Front working lamp installed on the top of cab 驾驶室顶安装的后工作灯 Rear working lamp installed on the top of cab	11.3 t 配重 11.3t Counterweight
工作装置 Working device	技术 Technology	润滑系统 Lubrication system
动臂7m Boom 7m 斗杆2.57m Arm 2.57m 铲斗5.2m³岩石斗 Bucket 5.2m³ Rock bucket	XEICS智能控制系统 XEICS intelligent control system 数据链路插座 Data link socket	电动自润滑系统 Electric self-lubrication system 斗杆集中 Arm concentration

选装配置 Optional configuration XE800D

自动预热 Automatic preheat 带加热器油水分离器 (24V) Oil-water separator with heater (24V) 冷却液加热器 (燃油式) Coolant heater(fuel type) 燃油加油泵 50L/min Fuel refueling pump 50L/min 燃油快速加注系统 Fast fill fuel system 辅助液压阀 Auxiliary hydraulic valve 液压缓冲阀 Hydraulic buffering valve 液压管路: 破碎锤 Hydraulic line: quartering hammer 液压管路: 拇指钳及油缸 Hydraulic line: thumb pliers and cylinder 液压管路: 防爆阀管路及油缸 Hydraulic line: pipeline of explosion-proof valve and cylinder 液压管路: 快速连接器 Hydraulic pipeline: quick connector 液压管路: 液压剪 Hydraulic line: hydraulic shear	液压管路: 液压振动夯/高频破碎器 Hydraulic line: hydraulic vibration rammer/high-frequency breaker 液压管路: 液压抓具 Hydraulic line: hydraulic grapple 操作方式切换 Operating modes switch 液压油 ISO VG 32,68 Hydraulic oil ISO VG 32,68 灭火器 Fire extinguisher 工作辅具预留开关 Reserved switch for auxiliary equipment 动臂、斗杆管路防爆阀 Explosion-proof valve of boom and arm pipeline 750 mm (28") 双筋履带板 750 mm (28") Double rib track plate 900 mm (31") 双筋履带板 900 mm (31") Double rib track plate 3.8-5.2m³岩石斗 3.8-5.2m³ Rock bucket 5.3-5.6 m³加强斗 5.3-5.6 m³ Heavy load bucket 快速连接器 Quick connector	破碎锤 Quartering hammer 液压拇指钳 Hydraulic thumb pliers 松土器 Scarifier 振动夯 Vibrating tamper 液压剪 Hydraulic shear 抓具 Grip 高频破碎器 High frequency breaker 贝壳斗 Clam shell bucket 梅花抓斗 Plum-blossom shape grab bucket 筛型斗 Screen-type bucket 12V点烟器 12V Cigar lighter 24V电源接口 24V Power interface
---	---	---

更节能环保

More energy-conservation and environmental protection



- 发动机采用美国原装进口珀金斯2506D-E15TA发动机，额定功率403KW，最大扭矩为2466NM，满足TIER 3 排放标准，珀金斯发动机具有动力强劲、低噪音、低排放、可靠性高、维保周期长等特点，可满足各种施工工况需求。

The engine is a Perkins 2506D-E15TA imported from the United States, with a rated power of 403KW, a maximum torque of 2466NM, and a TIER 3 emission standard. It has the characteristics of strong power, low noise, low emissions, high reliability, long maintenance cycle and other characteristics to meet the needs of various construction conditions.

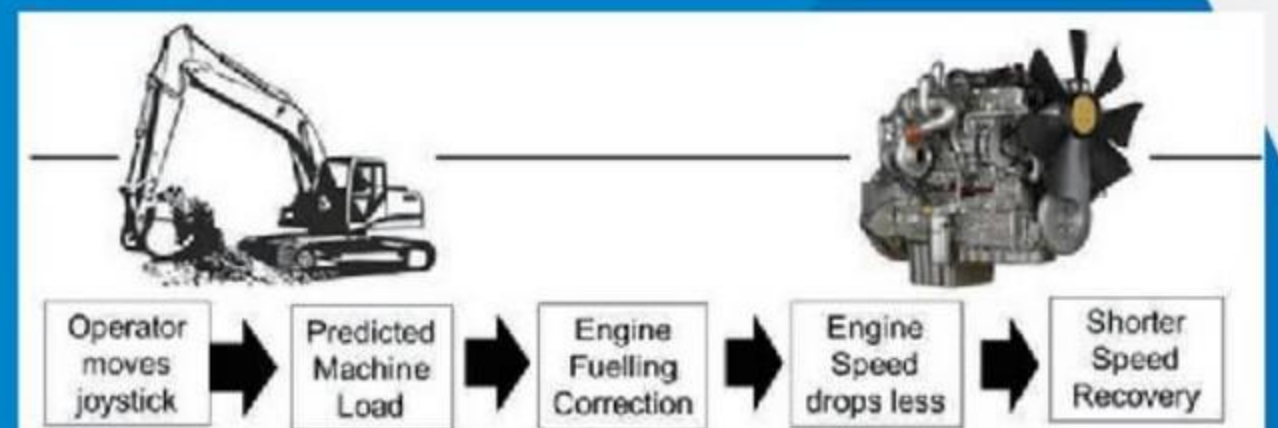
www.wme.cn

更高效回报

More efficient return

- 性能优异可靠的电控系统，采用FFTC预喷油技术，实现发动机按需输出功率，最大限度地利用发动机功率，精确匹配发动机和液压系统，匹配度达95%以上。发动机掉速改善30%，发动机掉速恢复时间缩短25%，保证机器快速、高效作业，降低能耗。针对不同作业需求，系统设置H（重载）、S（标准）、L（轻载）三种工作模式，机器上电后，系统默认为L模式。通过油门旋钮可以调节发动机对应的工作模式和转速，并对主泵功率阀进行控制，从而控制主泵在不同模式和不同档位下的功率。

Excellent and reliable electronic control system, maximizing the use of engine power. FFTC pre-injection technology, output power on demand, matching degree of engine and hydraulic system is over 95%. The engine stall speed is improved by 30%, and the engine stall recovery time is reduced by 25%, ensuring fast and efficient operation of the machine and reducing energy consumption. To meet various operating requirements, the system has three modes: H (heavy load), S (standard), and L (light load). After power on, the system defaults to L. The throttle knob can change the various working modes and speeds of the engine, and control the main pump power valve to control the output power of the main pump in three modes and gears.



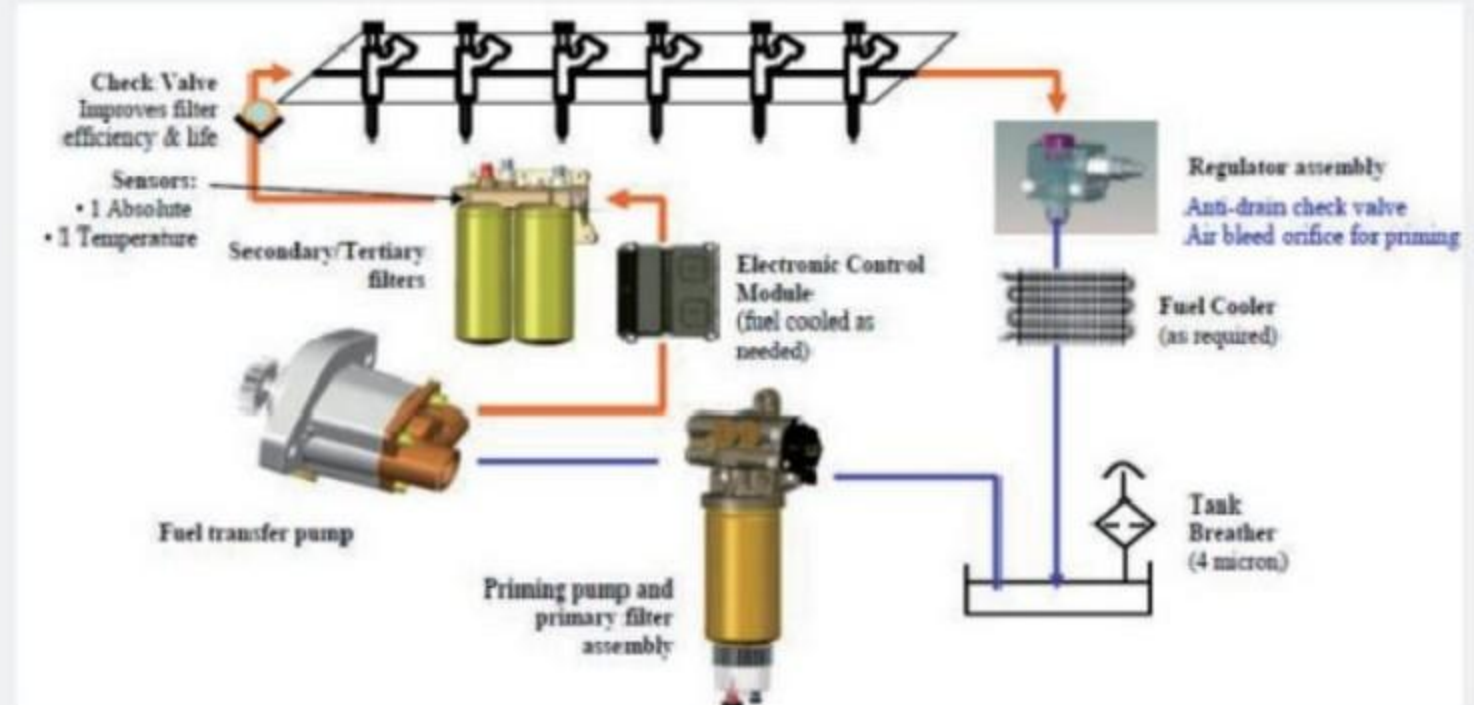
更可靠耐用

More reliable and durable

- XE800D设置了三级燃油过滤系统：两级粗滤+一级精滤（两个精滤并联），有效过滤油中杂质，确保发动机在恶劣工况下的长时间、高负荷、连续可靠运行。2506D-E15TA发动机采用的是机械电子单体喷油器燃油系统，通过ECM实现喷油器的电子控制，各缸之间互不干扰。全电子控制可以精确控制喷油量和喷油时间，降低燃油消耗，提高发动机效率。

The XE800D is equipped with a three-stage fuel filtration system: two-stage rough filtration + one-stage fine filtration (two fine filters are connected in parallel), which effectively filters impurities in the oil to ensure long-term, high-load, continuous and reliable operation of the engine under harsh conditions. The 2506D-E15TA engine uses a mechanical and electronic single injector fuel system. Electronic control of the injector is realized through ECM, and the cylinders do not interfere with each other. Full electronic control can accurately control the fuel injection amount and injection time, reduce fuel consumption and improve engine efficiency.

- 设计了3级空气过滤系统，免维护旋流管式空气预滤器结合两级纸质径向密封式空气过滤器，过滤效率达到99.99%，能适应恶劣的矿山多粉尘工况。XE800D has designed a three-stage air filtration system, a maintenance-free swirl tube air pre-filter combined with a two-stage paper radial sealed air filter, with a filtration efficiency of 99.99%, which can adapt to harsh mine dusty working conditions.



液压系统

Hydraulic System

- 采用原装进口的液压元件和按需供给的正流量控制系统，经济性提升的同时提高了液压系统的可靠性；新型主阀具有的一系列可独立控制的再生、合流、优先功能改善了整机操控性，降低了能耗需求；整机采用完全独立的散热控制系统，根据油温、水温、中冷温度自动控制风扇转速，节能降噪；双泵双回路散热系统的应用，实现了两个风扇的独立控制，同时风扇具有反转功能，便于清理散热器上的灰尘。

The imported hydraulic components and the positive flow control system supplied on demand are used to improve the economy and improve the reliability of the hydraulic system. The new main valve has independent controllable regeneration, confluence, and priority functions, which improves the controllability of the whole machine. Reducing energy consumption requirements; the machine uses a completely independent heat dissipation control system, which automatically controls the fan speed according to oil temperature, water temperature, and intercooling temperature to save energy and reduce noise; the application of a dual-pump and dual-circuit cooling system achieves two fans independent control, while the fan has a reverse function, easy to clean up the dust on the radiator.



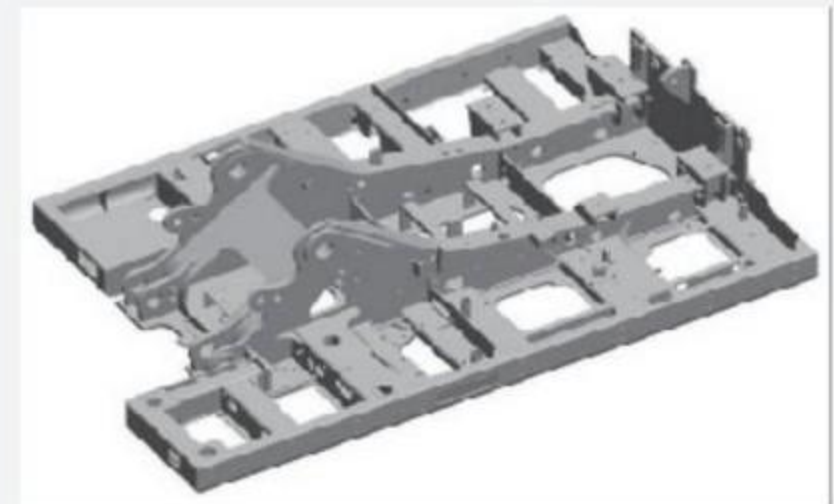
- 建立整机实体有限元模型，对整机进行静力、动态模拟分析，对工作装置等关键结构件进行疲劳寿命等分析或计算，保证产品长期耐久工作。精心设计的加强型前端工作装置，进行了疲劳强度试验，可靠性满足重载挖掘和采矿需要。标配兼具穿透性和耐磨性的斗齿，可满足矿山施工需求，同时针对不同施工条件，有多种斗齿可选。动臂和斗杆关键受力部位全部采用锻件设计，承载能力好，可靠性高。

Establish a solid finite element model of the whole machine, perform static and dynamic simulation analysis, and analyze and calculate fatigue life of key structural components such as working devices to ensure long-term and durable work. The carefully designed and reinforced front-end working device has undergone fatigue strength tests, and its reliability meets the needs of heavy-duty mining and mining. It is equipped with bucket teeth with penetration and wear resistance as standard to meet the needs of mining construction. There are a variety of bucket teeth for different construction conditions. The key force parts of the boom and stick are all designed with forgings, which have good bearing capacity and high reliability.



- 转台主体由加强钢板焊接而成的工字梁结构，提高了主体部分承受正负弯矩的能力，保证上部机器强度需求。采用D型结构钢设计的左右裙架，可以有效防止撞击变形。

Strengthen the main body of the I-beam structure turntable made of welded steel plates, improve the ability of the main body to withstand positive and negative bending moments, and ensure the strength requirements of the upper machine. Left and right skirts designed with D-shaped structural steel can effectively prevent impact deformation.



- 电气系统采用航空级保护，插接件选用防护等级高、电气导通性能好的德驰插接件，防护能力出色；整车线束全部采用新型浸胶卡箍固定，固定可靠且防止磨损；整车工作灯采用亮度高、低能耗的LED工作灯，即使在多雾天气也能良好工作，LED灯寿命可达6万小时；控制器采用铸铝外壳，坚固耐用，散热性能好，数据存储稳定，性能可靠。

The electrical system adopts aviation-grade protection, and the plug-in connector uses gallop plug-in connector with high protection level and good electrical conductivity, which has excellent protection ability. The entire vehicle wiring harness is fixed with a new type of dipping clamp, which is reliable and prevents wear. The vehicle's work light uses high-brightness, low-energy-consumption LED work lights. It works well in foggy weather, and the life of LED lights is 60,000 hours. The controller is made of cast aluminum casing, which is sturdy and durable, has good heat dissipation performance, and the data storage is stable and reliable.



- 底盘部分采用全防护型夹轨器，驱动轮侧采用链轨挡护结构，有效防止石块进入履带链轨，减少磨损；双筋履带板，抓地能力强，转向性能更好。

The chassis adopts full-protection rail clamps, and the drive wheel side adopts a chain rail retaining structure, which effectively prevents stones from entering the crawler chain rail and reduces wear; the double-reinforced track pads have strong grip and better steering performance.



更智能管控

More intelligent management and control

- “智”造未来，智能化控制系统全新升级：
 - (1) 采用全新自主开发的智能控制系统（XEICS），高效匹配液压系统和动力系统功率，智能调整工作状态，更节能更高效；
 - (2) 配备了现场诊断专家系统，为维修技师提供数字化诊断支持，提高现场处理方案，快捷准确；
 - (3) 完整的物联网平台构架，通过智能云控系统和徐工掌上客户端，实现远程监控和诊断，实时工况数据一目了然，客户可以及时掌控车辆动态；
 - (4) 先进的多种模式功率自匹配，适应不同机具和工况，自适应调整挖机状态；
 - (5) 先进的车载OBD系统，实时记录整车运行信息，可快速辅助分析故障；
 - (6) 可选配行为监控系统和远程操控系统，让施工更安全。



New upgrade of intelligent control system:

- (1) The intelligent control system (XEICS) developed by XCMG can efficiently match the power of the hydraulic system and the power system, intelligently adjust the working state, and save energy and efficiency;
- (2) Equipped with an on-site diagnostic expert system to provide digital diagnosis support for maintenance technicians, improve on-site processing solutions, and be fast and accurate;
- (3) A complete IoT platform, through the intelligent cloud control system and XCMG handheld client, to achieve remote monitoring and diagnosis, real-time reading of operating conditions data, vehicle dynamics.
- (4) Multiple modes of power self-matching, adapt to different machines and working conditions, and adaptively adjust the state of the excavator;
- (5) On-board OBD system, which records the vehicle's running information in real time, which can quickly analyze the fault;
- (6) Equipped with behavior monitoring system and remote control system for safer construction.

- 高原自适应系统，充分满足高海拔客户需求：
 - (1) 通过GPS海拔定位信息与发动机信息采集，自动计算海拔高度，主动提醒客户，更加人性化、智能化；
 - (2) 根据海拔高度与进气压力数据，智能调整液压泵功率，适应性更强。

Plateau adaptive system, fully meet the needs of customers at high altitudes:

- (1) Automatically calculate the altitude through GPS altitude positioning information and engine working condition detection; user-friendly and intelligent prompts;
- (2) Adjust the power of the hydraulic pump according to the altitude and intake pressure data to make it more adaptable.

更舒适安全

More comfortable and safe

- XE800D采用全新升级的加强型正压驾驶室，密封性提升70%；标配FOPS落物防护系统，可选配前窗防护网，操作更安全；采用加厚异型钢设计的驾驶室框架足以保护操作者的安全；日本进口的高性能硅油减震器可消除机器震动对操作者的干扰。

XE800D adopts a newly upgraded reinforced positive pressure cab, which improves the sealing performance by 70%; Standard FOPS falling object protection system, optional front window protection net for safer operation; The use of thickened special-shaped steel design of the cab frame is sufficient for the safety of the operator; the high-performance silicone oil shock absorber imported from Japan can eliminate the interference of the machine vibration to the operator.



- 全新流线型设计，跑车级豪华内饰，工作舒适轻松；悬浮座椅前后，留有宽大充足的腿部空间与丰富的储物空间。控制装置符合人机工程学设计，各种操作按钮智能化布局，触手可及。行走踏板平缓均匀，息脚踏板位置角度合理舒适。超大的操作视野，全景前窗和侧窗，后窗提供各个方向的最佳视野；大功率冷暖空调，确保室内快速制热、制冷。

The new streamlined design, luxurious interior, comfortable and easy work; front and rear of the suspension seat, leaving ample legroom and rich storage space. The control device conforms to the ergonomic design, and the intelligent layout of various operation buttons is at your fingertips. The walking pedal is smooth and even, and the angle of the foot pedal is reasonable and comfortable. Large operating field of view, panoramic front and side windows, and rear window provide the best field of vision in all directions; high-power cooling and heating air conditioners ensure fast heating and cooling in the room.



XE800D MINING HYDRAULIC EXCAVATOR

- 尾部摄像头和后尾灯：保证夜间施工和回转、倒车时候的安全性。
Rear camera and rear light: guarantee the safety during night construction, turning and reversing.



便捷的维护保养

Convenient repair and maintenance

- XE800D日常维护保养全部触手可及，无论是燃油滤、机油滤、先导滤还是水箱、电器件均可以站在走台板上直接维修保养，操作简单易行，节省成本；可以选配燃油、液压油、齿轮油集中加注系统，方便快速检测、加注或更换油液。

XE800D daily maintenance is all at your fingertips. Fuel filters, oil filters, pilot filters, water tanks, and electrical components can be directly maintained on the walking table, which is easy to operate and saves costs. Optional fuel, hydraulic oil, and gear oil centralized filling systems are available for quick detection, filling, or oil replacement.



- XE800D标配单线式全自动集中润滑系统，实现润滑脂定时定量加注。

XE800D can be equipped with single-line full-automatic centralized lubrication system to achieve regular and quantitative grease filling.

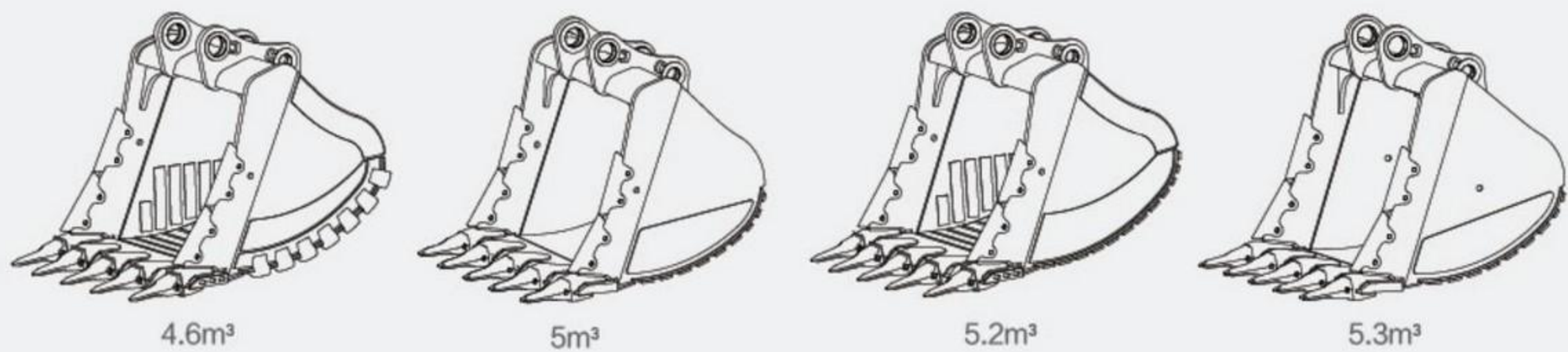


- XE800D内置了专家诊断系统，该系统包括发动机控制器、主控制器、电子监控器、GPS及故障诊断仪，设备间通过CAN总线进行数据和信息通讯；专家诊断技术的应用可实现整机实时监控、远程监控、故障诊断、参数及功能调整，为产品市场售后服务提供快速、及时的故障判断分析及处理方案。此外，通过GPS系统可实现远程故障诊断。

XE800D has built-in expert diagnosis system, which includes engine controller, main controller, electronic monitor, GPS and fault diagnosis instrument, and data and information communication between devices through CAN bus; application of expert diagnosis technology can realize real-time monitoring of the whole machine, Remote monitoring, fault diagnosis, parameter and function adjustment, to provide fast and timely fault judgment analysis and processing solutions for product market after-sales service. In addition, remote fault diagnosis can be achieved through the GPS system.

铲斗配置

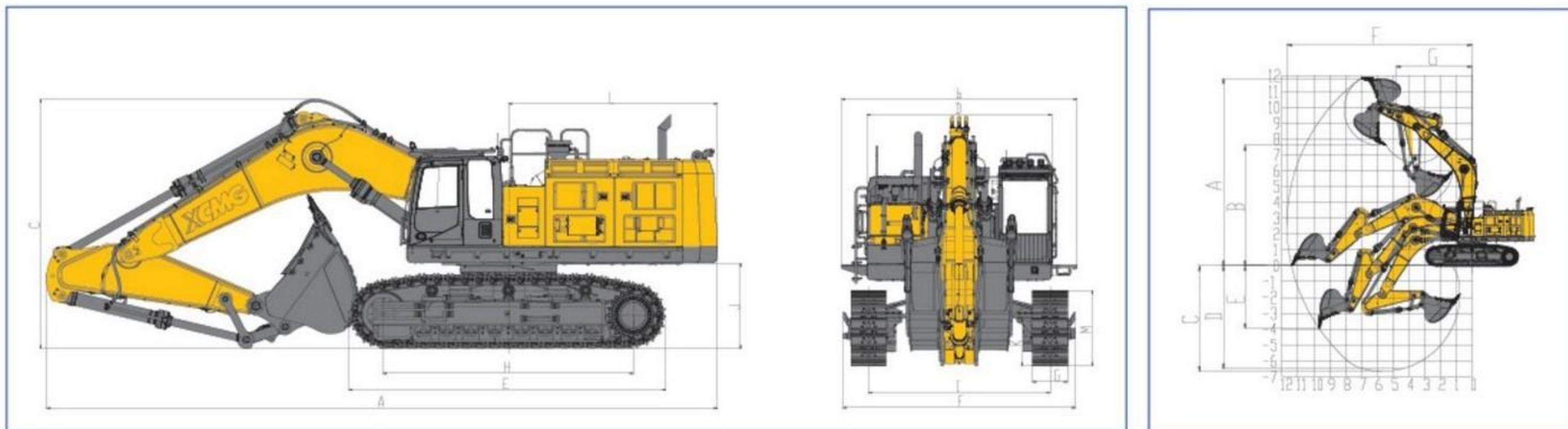
Configuration of bucket



www.wme.cn

铲斗配置表 Configuration of bucket					XE800D
类型 type	宽度 Width	斗容 Bucket capacity	重量 Weight	填充率 Fill rate	动臂 Boom 7 m 斗杆 Stick 2.57 m
	mm	m ³	kg	%	
重载岩石斗 Heavy Rock Bucket	1800	3.8	4667	100	■
	1900	4	4825	100	■
	2150	4.6	4875	100	■
普通岩石斗 Rock Bucket	2330	5	4600	100	□
	2350	5.2	4875	100	□
加强斗 Strengthen Bucket	2430	5.3	4525	100	○
	2560	5.6	4780	100	○

■: 适用于密度小于2100 kg/m³ (3500 lb/yd³) 或以下物料 Suitable for materials with density less than 2100 kg / m³ (3500 lb / yd³) or below
 □: 适用于密度小于1800 kg/m³ (3000 lb/yd³) 或以下物料 Suitable for materials with density less than 1800 kg / m³ (3000 lb / yd³) or below
 ○: 适用于密度小于1500 kg/m³ (2500 lb/yd³) 或以下物料 Suitable for materials with density less than 1500 kg / m³ (2500 lb / yd³) or below
 ○: 适用于密度小于1200 kg/m³ (2000 lb/yd³) 或以下物料 Suitable for materials with density less than 1200 kg / m³ (2000 lb / yd³) or below
 △: 适用于密度小于900 kg/m³ (1500 lb/yd³) 或以下物料 Suitable for materials with density less than 900 kg / m³ (1500 lb / yd³) or below



主要参数/Main Specifications

型号 Model	单位 UOM	参数 Parameters
操作重量 Operation Weight	Kg	78000
铲斗容量 Bucket Capacity	m ³	3.8-5.6

发动机 Engine

发动机型号 Model	/	2506D
直喷 Direct injection	/	√
4冲程 Four strokes	/	√
水冷 Water cooling	/	√
涡轮增压 Turbo-charging	/	√
空空中冷 Air to air intercooler	/	√
缸数 No. of cylinders	/	6
额定输出功率/转速 Output power	kw/rpm	403/2100
最大扭矩/转速 Torque/Speed	N.m	2466/1400
排量 Displacement	L	15.2

主要性能 Main performance

行驶速度(高/低) Travel speed (H/L)	km/h	4.1/2.8
回转速度 Rotating speed	r/min	7
爬坡能力 Gradeability	°	35°
接地比压 Ground pressure	kPa	113
铲斗挖掘力 Bucket digging force	kN	390
斗杆挖掘力 Arm crowd force	kN	332
最大牵引力 Maximum traction	kN	575

液压系统 Hydraulic system

主泵 Main pump	/	2个柱塞泵 Plunger pumps
主泵额定流量 Rated flow of main pump	L/min	2 × 450
主安全阀压力 Pressure of prime valve	MPa	35
行走系统压力 Pressure of travel system	MPa	35
回转系统压力 Pressure of swing system	MPa	32
先导系统压力 Pressure of pilot system	MPa	3.9

油类容量 Oil capacity

燃油箱容量 Fuel tank capacity	L	925
液压油箱容量 Hydraulic tank capacity	L	500
发动机油容量 Engine oil capacity	L	67

型号 Model	单位 UOM	参数 Parameters
----------	--------	---------------

外形尺寸 Outline dimension

A 总长 Overall length	mm	12600
B 总宽 Overall width	mm	4420
C 总高 Overall height	mm	4690
D 转台宽度 Width of platform	mm	3470
E 履带长度 Length of crawler	mm	5955
F 底盘总宽 Overall width of chassis	mm	4360
G 标准履带板宽度 Width of crawler	mm	650
H 履带轴距 Track length on ground	mm	4700
I 轨距 Crawler gauge	mm	2750/3410
J 配重离地间隙 Clearance under counterweight	mm	1610
K 最低离地间隙 Min. ground clearance	mm	850
L 尾部回转半径 Min. tail swing radius	mm	4015
M 履带高度 Height of crawler	mm	1420

作业范围 Working scope

A 最大挖掘高度 Max. digging height	mm	11830
B 最大卸载高度 Max. dumping height	mm	7600
C 最大挖掘深度 Max. digging depth	mm	6660
D 8英尺水平面挖掘深度 8-inch horizontal plane digging depth	mm	6500
E 最大垂直挖掘深度 Max. vertical wall digging depth	mm	3950
F 最大挖掘半径 Max. digging reach	mm	11690
G 最小回转半径 Min. swing radius	mm	4810

标配 Standard

动臂长度 Length of boom	mm	7000
斗杆长度 Length of arm	mm	2570
铲斗斗容 Bucket capacity	m ³	5.2

选配 Option

斗杆长度 Length of arm	mm	3000
铲斗斗容 Bucket capacity	m ³	3.8 (岩石 Rock) 4.0 (岩石 Rock)
	m ³	4.6 (岩石 Rock)
	m ³	5.0 (岩石 Rock) 5.6 (加强 Strength)

材料和规格可随时改变，恕不另行通知
Materials and specifications may be changed at any time without prior notice