

# TELEHANDLERS



The print does not belong to the contract, nor a part of the vehicle purchase contract. We reserve the right to revise the product model, parameters, configuration based on the continuous improvement requirements of the product, without prior notice. Pictures are for reference only, and the specific product shall depend on the real product.

## 主要技术参数

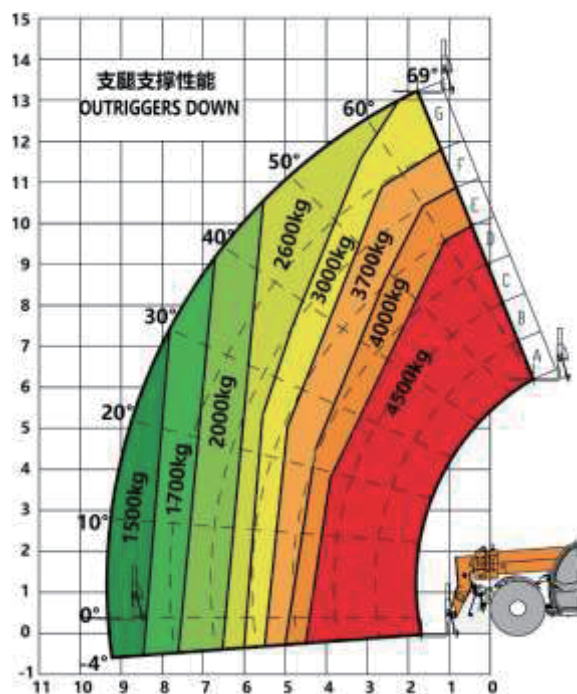
### Main Technical Data

项目 Item				单位 Unit	参数 Parameter
整机重量（含货叉）Unladen weight(with forks)				KG	12000
整机尺寸 Overall size	宽度 Overall width			mm	2350
	高度 Overall height			mm	2540
	长度 Overall length			mm	6255
发动机 Engine	排放要求 Emission requirement	国3 Stage 3	型号 Model	——	Cummins QSF3.8
			排量 Displacement	L	3.8
			功率 Power	Kw	97Kw/2200 rpm
			扭矩 Torque	N.m	488N·m/1600 rpm
		国3 Stage 3	型号 Model	——	道依茨BF4M
			排量 Displacement	L	4.1
			功率 Power	Kw	72kW@2200rpm
			扭矩 Torque	N.m	375Nm@1600rpm
轴距 Wheelbase				mm	3490
离地间隙 Ground clearance				mm	400
货叉倾翻角度（上倾翻/下倾翻）Tilting angle of fork(tip up/tip down)				°	-14/112
液压系统压力 Hydraulic system pressure				bar	300
液压油箱容积 Hydraulic oil tank volume				L	160
燃油箱容积 Fuel tank volume				L	140
轮胎 Hollow tire				——	14.00
货叉规格（可选配）Fork specifications(optional)				mm	1200x150x50

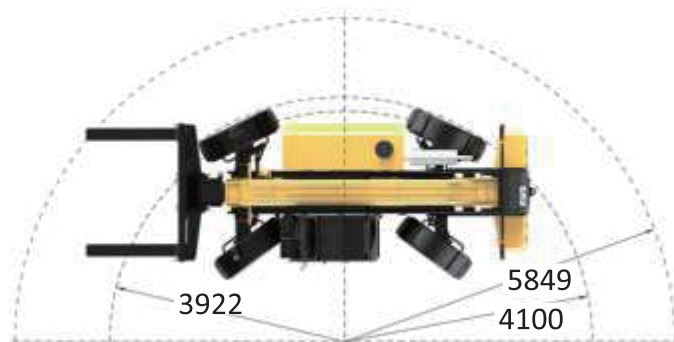
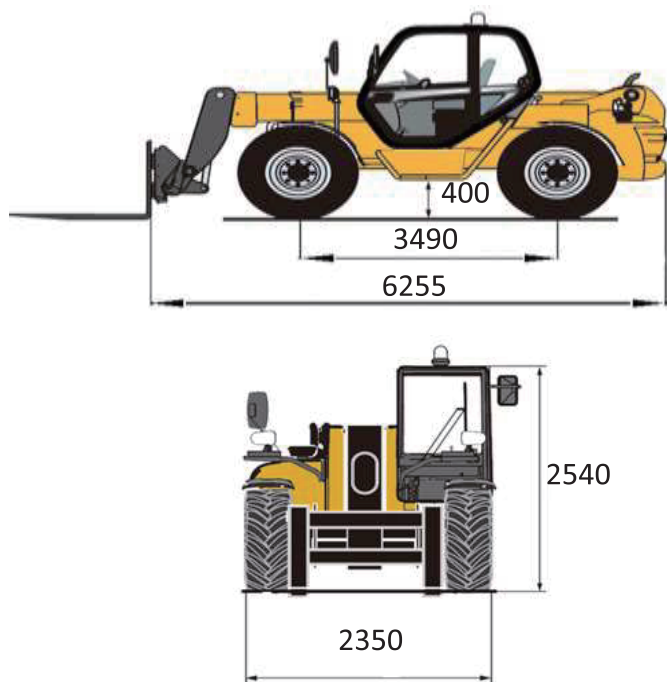
## 作业性能 Performance

举升能力 Lifting Capacity	单位 Unit	参数 Parameter
最大起重量 Max.capacity	KG	4500
最大起升高度 Max.lifting height	m	13.2
外伸距 Max.outreach	m	9.3
最大高度吊重量 Max.height lifting capacity	KG	3000
最大幅度吊重量 Max.amplitude lifting capacity	KG	1200
举升/下降速度 Unladen lifting/lowering speed	s	14/11
外伸/回缩速度 Unladen Extension/retraction speed	s	18/15

行驶性能 Driving Capacity	单位Unit	参数 Parameter
最大行驶速度 Max.travel speed	Km/h	32
爬坡能力（重载）Gradeability（overload）	%	35
调平范围 Leveling range	°	±10
转弯半径Turning radius	m	4.1
传动方式 Transfer mode	——	静液压传动 Gearbox transmission 前2/后2 forward2/reverse2
转向模式 Steering mode	——	前桥、蟹行、小转弯 Front/crab/circle



属具配置 Attachment Selection			
货叉 Forks		铲斗 Bucket	
工作平台 Work platform		吊钩 Hook	
抱夹 Clamp		机械手臂 Mechanical arm	





## 注意事项

### Notes

1. 本手册仅供参考，所有信息均仅供说明，不应依赖它去操作伸缩臂叉车，车辆的正确操作说明请参见操作手册。
2. 伸缩臂叉车属于非道路车辆，车辆的行驶需遵守当地的交通规则和法规要求。车辆长途转移时，必须使用其它车辆拖运，同时考虑车辆的总重、轴荷和轮廓尺寸的限制要求。
3. 伸缩臂叉车必须在坚实的地面上工作，地面坡度不得大于3%。
4. 伸缩臂叉车作业时，风力不得大于6级。在有风条件下作业时，必须认真观察和注意风速、设备状态及作业环境等各个方面。另外，必须考虑到地面与高空，平地与街道地区的风速有很大差别。

1. All information in the brochure is provided for reference only. Never rely on it to operate the machine. Refer to the operation manual for operation instructions of the machine.
2. The machine belong to off-road machines. Local traffic rules and regulations must be observed. For long-distance job site transfer, use a trailer and take GVW, axle load and dimensions of the machine into consideration.
3. The machine must be operated on firm ground, which gradient does not exceed 3%.
4. Operation of the machine is permissible only when the wind force is below grade 6. When operating the machine under wind, it is necessary to observe wind speed, equipment status and operating environment. In addition, the wind velocity on the ground is different with that in the high air, and it is also different on flat ground and in city air, which shall be taken into account.